

## **ELEVATION REFERENCE MONUMENT**

**ERM:** 4A  
**Panel:** 1320

**Elevation (NAVD88):** 4795.32  
**Elevation (NGVD29):** 4792.62

**Latitude:** 34°44'43" N  
**Longitude:** 112°30'11" W

**Description:** 3-1/4" diameter Yavapai County Flood Control District aluminum disk in concrete approximately 34 feet south of Center Street and east of Chino Valley Stream. Station is approximately 265.4 feet southeasterly of the southeast corner of a concrete low water crossing.

# YAVAPAI COUNTY FLOOD CONTROL DISTRICT

RM 4A

## MONUMENT RECORD FORM

### CORNER LOCATION INFORMATION

SECTION 19 CORNER INDEX CODE \_\_\_\_\_  
 TOWNSHIP 16 NORTH, RANGE 2 WEST  
G & S R MERIDIAN YAVAPAI COUNTY

CORNER TYPE:  
 ALIQUOT GOV'T COR.  NON-ALIQUOT GOV'T COR.  OTHER  
 FORMAL CORNER NAME: RM 4A

### COUNTY FILING INFORMATION

APPLY COUNTY STICKER HERE IF APPLICABLE

FEE \$ \_\_\_\_\_  
 DOCKET \_\_\_\_\_ PAGE \_\_\_\_\_  
 \_\_\_\_\_ COUNTY, ARIZONA  
 DATE \_\_\_\_\_ HOUR \_\_\_\_\_  
 FEE: \_\_\_\_\_ PAGES \_\_\_\_\_  
 REQUEST OF: \_\_\_\_\_  
 \_\_\_\_\_  
 TITLE: \_\_\_\_\_  
 SUBMITTED TO BE CHECKED FOR COMPLETENESS  
 FILED AT REQUEST OF COUNTY REVIEWER

TITLE: \_\_\_\_\_  
 SIGNED: \_\_\_\_\_ DATE: \_\_\_\_\_

### TOWNSHIP INDEX

SCALE: 1" = 10,000'

	1	2	3	4	5	6	7	8	9	10	11	12	13	14	15	16	17	18	19	20	21	22	23	24	25
A																									
B																									
C																									
D																									
E																									
F																									
G																									
H																									
I																									
J																									
K																									
L																									
M																									
N																									
O																									
P																									
Q																									
R																									
S																									
T																									
U																									
V																									
W																									
X																									
Y																									
Z																									

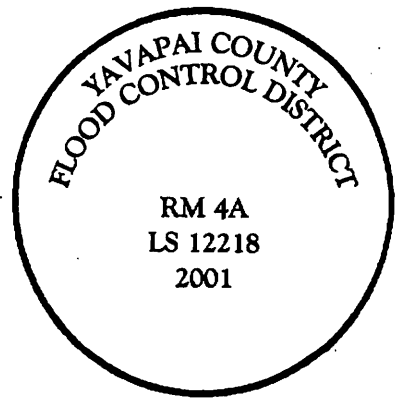
### MONUMENT FIELD VISIT INFORMATION

DATE OF FIELD VISIT: Nov 5, 2001

MONUMENT:  
 LEFT AS FOUND  FOUND & TAGGED  FOUND & REBUILT  
 RESTORED LOST CORNER  ESTABLISHED NEW ACCESSORIES  
 STATE PLANE COORDINATES:  ESTABLISHED TO \_\_\_\_\_ ORDER  
 ZONE:  WEST  CENTRAL  EAST  NOT ESTABLISHED  
 DATA:  N.A.D.1927 (FEET)  N.A.V.D.1929 (FEET)  
 Y=\_\_\_\_\_ X=\_\_\_\_\_ EL.=\_\_\_\_\_  
 N.A.D.1983 (METERS)  N.A.V.D.1988 (METERS)  
 N=\_\_\_\_\_ E=\_\_\_\_\_ EL.=\_\_\_\_\_  
 LAT. \_\_\_\_\_ NORTH. LONG. \_\_\_\_\_ WEST  
 GEOID HEIGHT \_\_\_\_\_ SCALE FACTOR \_\_\_\_\_  
 CONTROL STATIONS USED: RM 5

DESCRIBE RECORD EVIDENCE FOUND, INCLUDING TIES AND ACCESSORIES, OR IF A MONUMENT NOT OF RECORD, TELL WHY YOU ACCEPTED IT AS VALID. DESCRIBE ANY ACTIONS TAKEN BY YOU TO REHABILITATE OR PERPETUATE THIS MONUMENT IF FOUND IN PERISHABLE OR DETERIORATED CONDITION. IF NO EVIDENCE OF THE ORIGINAL MONUMENT OR ITS LOCATION CAN BE FOUND, DESCRIBE THE PROCEDURE FOLLOWED IN THE RESTORATION OF THE MONUMENT AND THE CONTROLLING CORNERS USED, INCLUDING ALL RECORD OF SURVEY REFERENCES. DESCRIBE ANY NEW MONUMENT SET (INCLUDING ACCESSORY MONUMENTS) AS TO MATERIAL, SHAPE, MARKING, PROJECTION OR BURIAL, AND DISPOSITION OF OLD MONUMENT. DESCRIBE NEW TIES AND ACCESSORIES IN COORDINATION WITH THE SKETCH ON THE REVERSE. DESCRIBE ANY CONFLICTING MONUMENTS OR EVIDENCE AND YOUR CONCLUSIONS.

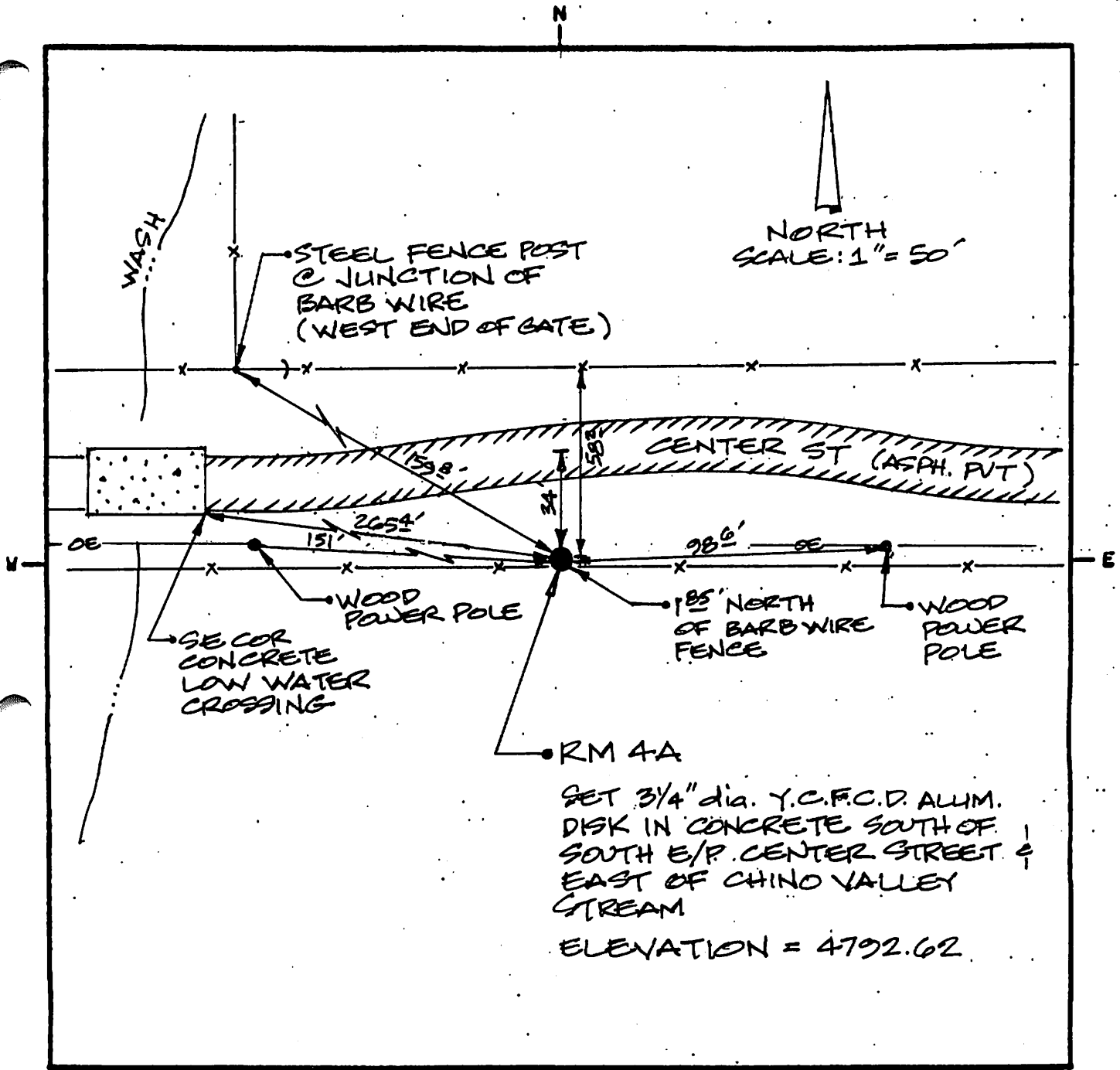
### CORNER MONUMENT CAP STAMPING



RM 4A  
SET TO REPLACE RM 4 (MISSING)  
SET 3/4" dia. Y.C.F.C.D. ALUM. DISK IN  
CONCRETE SOUTH OF CENTER STREET &  
EAST OF CHINO VALLEY STREAM  
ELEVATION = 4792.62

FILED RECORD OF SURVEY IN COUNTY RECORDS AT \_\_\_\_\_ BOOK \_\_\_\_\_ PAGE(S) \_\_\_\_\_  
 ATTACHED SHEETS:  WRITTEN TESTIMONY  FIELD NOTE PAGE(S)  OTHER \_\_\_\_\_  
 (OVER)

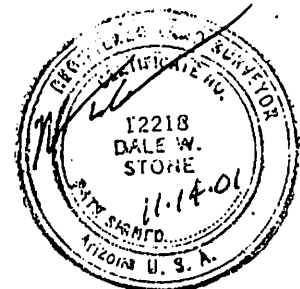
1320

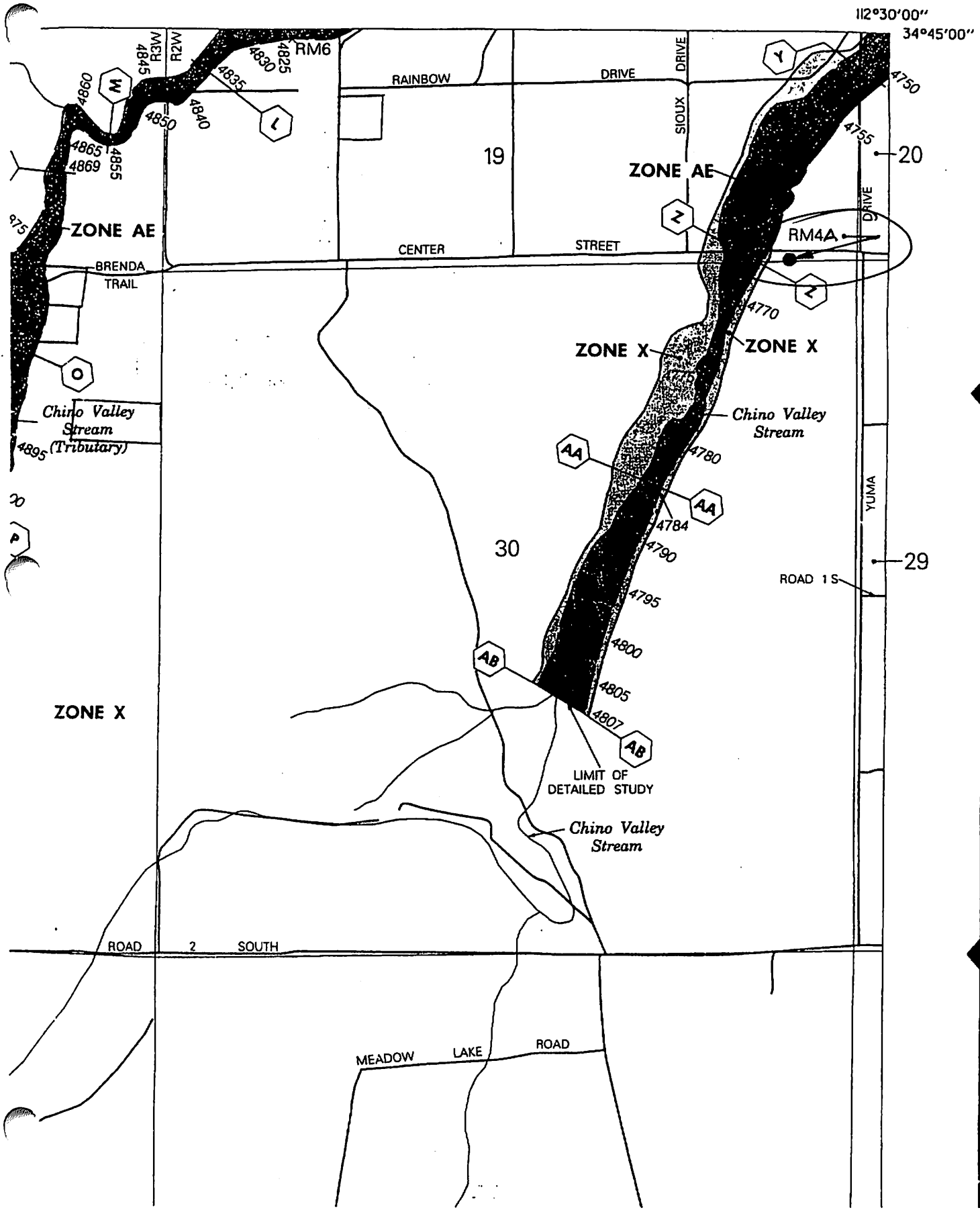


LAND SURVEYOR IDENTIFICATION AND CERTIFICATION

I, DALE W. STONE, ARIZONA R.L.S. NUMBER 12218, HEREBY CERTIFY THAT THIS CORNER RECORD WAS PREPARED UNDER MY DIRECTION, THAT ALL MONUMENTATION ACTUALLY EXISTS AS SHOWN HEREON.

COMPANY NAME JDS ASSOCIATES LLC  
 STREET ADDRESS \_\_\_\_\_  
 MAILING ADDRESS PO BOX 3240  
 CITY, STATE, ZIP CAMP VERDE, AZ 86322  
 TELEPHONE NUMBER (928) 567-8543





Legend symbols:

- Shaded area: Coas. Floo.
- Line with cross-ticks: Road
- Line with dots: Stream
- Circle with 'D': Detail

97°

This is a local specific construction floor plan.

SHT 1 of 7

BENCH CIRCUIT

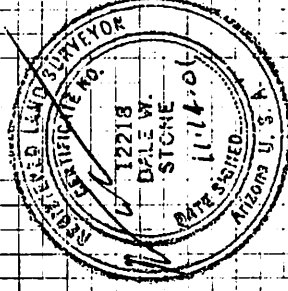
TO

RM 4A

SET TO REPLACE RM 4 (BURIED)

IN

CHINO VALLEY



NOV 5, 2001

J. STONE

R. IRIGORRYEN



507

TP 21	0.415	09.26	17.305	4808.85	SET 60D NAIL S. OF CENTER ST.
TP 22	0.37	92.325	18.69	4773.685	" " " " " "
TP 23	0.36	73.995	7.79	4766.245	SET CONC. BRIDGE (LOW WATER XING)
TP 24	14.77	81.015	0.885	4780.13	SET NAIL S. OF CENTER ST.
TP 25	12.61	92.74	0.12	4772.62	SET 3/4" DIA ICEP ALUM CAP IN CONC NEAR SOUTH FENCE LINE SOUTH OF CENTER ST - EAST OF LOW WATER CROSSING
RM 4A				4772.62	
TP 25	0.56	93.18	13.05	4780.13	
TP 24	0.84	80.97	14.72	4766.25	
TP 23	7.77	74.02	0.37	4773.65	
TP 22	18.63	92.28	0.32	4791.96	
TP 21	17.19	09.15	0.30	4808.85	
	73.514		73.51		

STA	+	NEW SET HI	NEW SET	ELEV	
TP 21	0.415	09.26	17.305	4808.85	
TP 22	0.37	92.325	18.69	4773.685	
TP 23	0.36	73.995	7.79	4766.245	
TP 24	14.77	81.015	0.885	4780.13	
TP 25	12.61	92.74	0.12	4772.62	
RM 4A				4772.62	
TP 25	0.56	93.18	13.05	4780.13	
TP 24	0.84	80.97	14.72	4766.25	
TP 23	7.77	74.02	0.37	4773.65	
TP 22	18.63	92.28	0.32	4791.96	
TP 21	17.19	09.15	0.30	4808.85	
	73.514		73.51		

