

ELEVATION REFERENCE MONUMENT

ERM: 136

Panel: 1685

Elevation (NAVD88): 4863.55

Elevation (NGVD29): 4860.82

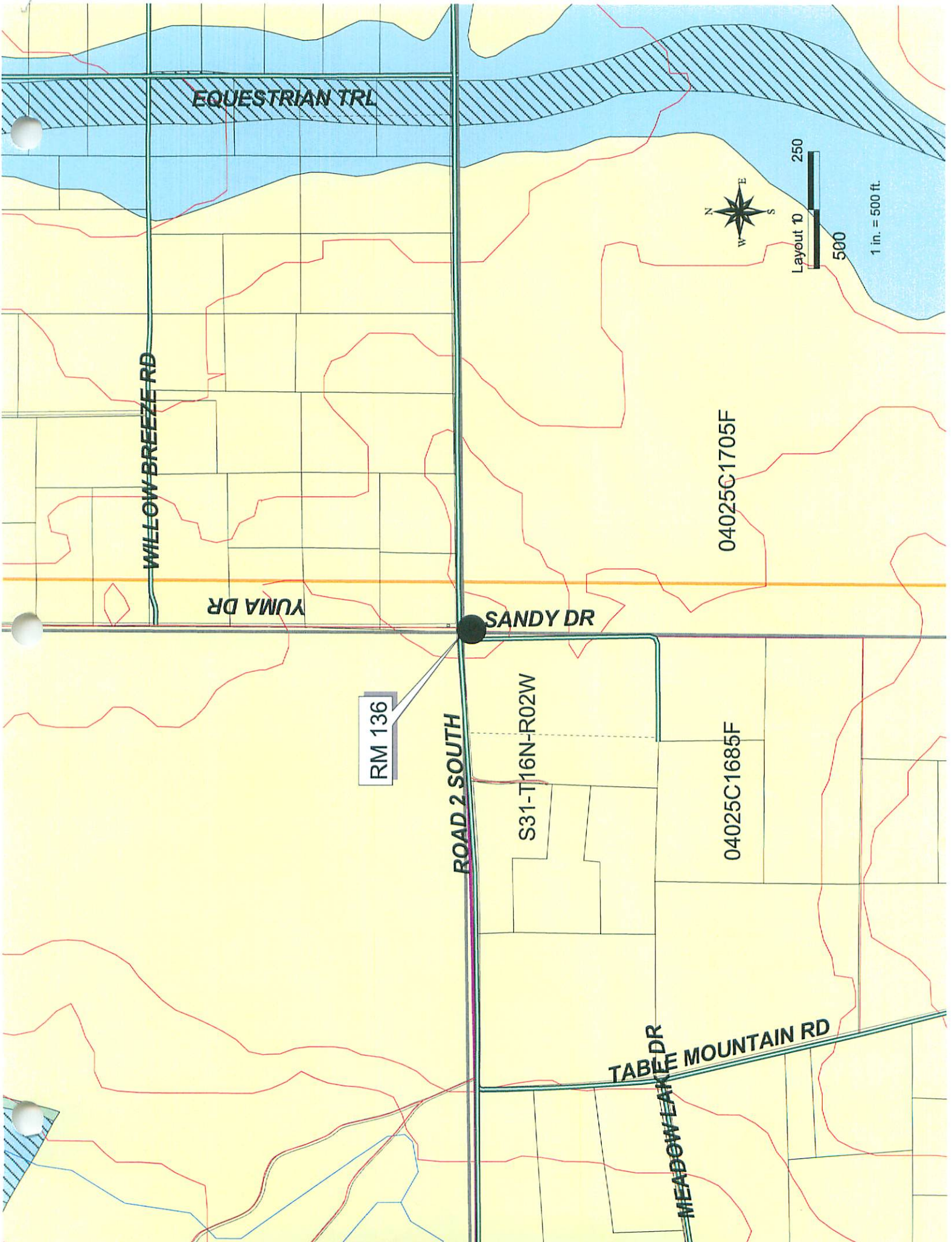
Latitude: 34°43'51"N

Longitude: 112°30'05"W

Description: General Land Office Brass Cap. approximately 50' southeast of intersection of Road 2 South and Yuma Drive

24	N 34°45'36.30897" W 112°30'05.11412"	1368493.882 524371.957	0.958	4788.271	Cherokee Drive and Morgan Trail General Land Office Brass Cap stamped "T16N, R2W, 18-17-20-19, 1914"; south of 2 North Road, east of intersection of Yuma Drive and Road 2 North
32	N 34°45'37.14975" W 112°28'59.85580"	1368547.689 529816.951	4747.869	4745.189	Brass Cap in Handhole at intersection of Reed Road and Road 2 North
101	N 34°47'49.40096" W 112°28'59.88690"	1381917.377 529889.779	4591.611	4588.760	Town of Chino Valley Brass Cap flush with pavement at intersection of Road 4½ North and Reed Road; stamped "T16N, R2W, ¼, 5¼, 1997, LS13190"
103	N 34°45'35.52750" W 112°30'37.79274"	1368430.870 521645.104	4787.373	4784.660	1" iron pipe with U.S. General Land Office survey brass cap, stamped ¼, S18 19, 1914, approximately 26 feet north of T intersection of two dirt roads centerline, approximately 150 feet west northwest of an intersection of a wash flowline and dirt road centerline
107	N 34°46'32.34832" W 112°32'14.35707"	1374223.750 513624.169	4965.646	4962.887	Brass Cap in concrete (0.81' above ground), approximately 3' southeast of bush and approximately 1.3' west of fence corner, stamped "W.J. CHEEK, 11-12-13-14, 1961, P.E. No. 2398"
124	N 34°44'44.22042" W 112°29'01.09822"	1363197.510 529683.112	4829.854	4827.164	Brass Cap in Handhole at intersection of Reed Road and Center Street
127	N 34°44'41.99734" W 112°31'09.62012"	1363035.163 518957.279	4901.428	4898.685	General Land Office Brass Cap, north of edge of pavement of Center Street, approximately 1 mile west of Yuma Drive
130	N 34°44'43.23824" W 112°29'44.93209"	1363119.070 526024.834	4761.304	4758.614	From Chino Valley at the intersection of Highway 89 and Center Street, travel west 2.3 miles to a dirt road heading south. Station is 40 feet south of Center Street, 50 feet east of southbound dirt road. Station is a ½" rebar with an aluminum cap marked, 14,216.
136	N 34°43'50.62741" W 112°30'05.00983"	1357810.209 524318.515	4863.545	4860.822	General Land Office Brass Cap, approximately 50' southeast of intersection of Road 2 South and Yuma Drive





EQUESTRIAN TRL

WILLOW BREEZE RD

YUMA DR

SANDY DR

ROAD 2 SOUTH

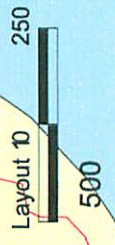
MEADOW LAKE DR
TABLE MOUNTAIN RD

04025C1705F

04025C1685F

S31-T16N-R02W

RM 136



1 in. = 500 ft.