

ELEVATION REFERENCE MONUMENT

ERM: 287

Panel: 1695

Elevation (NAVD88): 5260.74

Elevation (NGVD29): 5257.77

Latitude: 34°38'35" N

Longitude: 112°31'04" W

Description: U.S. General Land Survey brass cap 3-inch diameter in a soil pipe being the southeast corner of Section 25, T15N, R3W, approximately 275 feet north-northwest of a house with a peaked brown shingled roof and chimney, approximately 21 feet south of a forked trunked Juniper tree with each trunk being 8-inches in diameter, approximately 24 feet southwest of a forked trunked Juniper tree with the diameter being 5-inches and 8-inches.

1695

NATIONAL FLOOD INSURANCE PROGRAM

FIRM

ORIGINAL

FLOOD INSURANCE RATE MAP

YAVAPAI COUNTY,
ARIZONA AND
INCORPORATED AREAS

PANEL 1695 OF 3925

(SEE MAP INDEX FOR PANELS NOT PRINTED)

CONTAINS:

COMMUNITY

NUMBER

PANEL

SUFFIX

YAVAPAI COUNTY,
UNINCORPORATED AREAS

040093

1695

F

MAP NUMBER
04025C1695 F

EFFECTIVE DATE:
JUNE 6, 2001



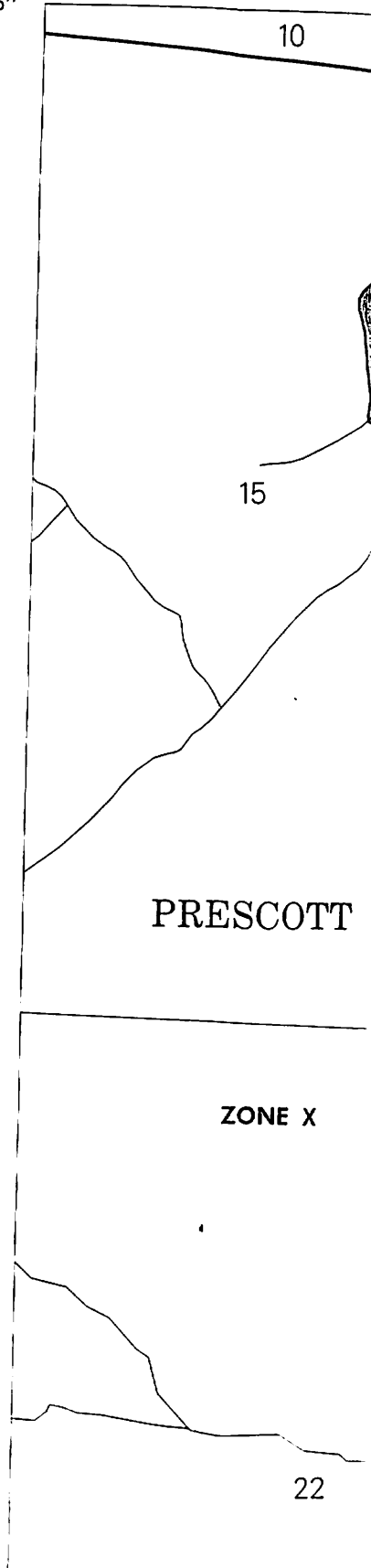
Federal Emergency Management As

Attention Danin

ELEVATION REFERENCE MARKS
 REFERENCE ELEVATION
 MARK (FEET NGVD) DESCRIPTION OF LOCATION

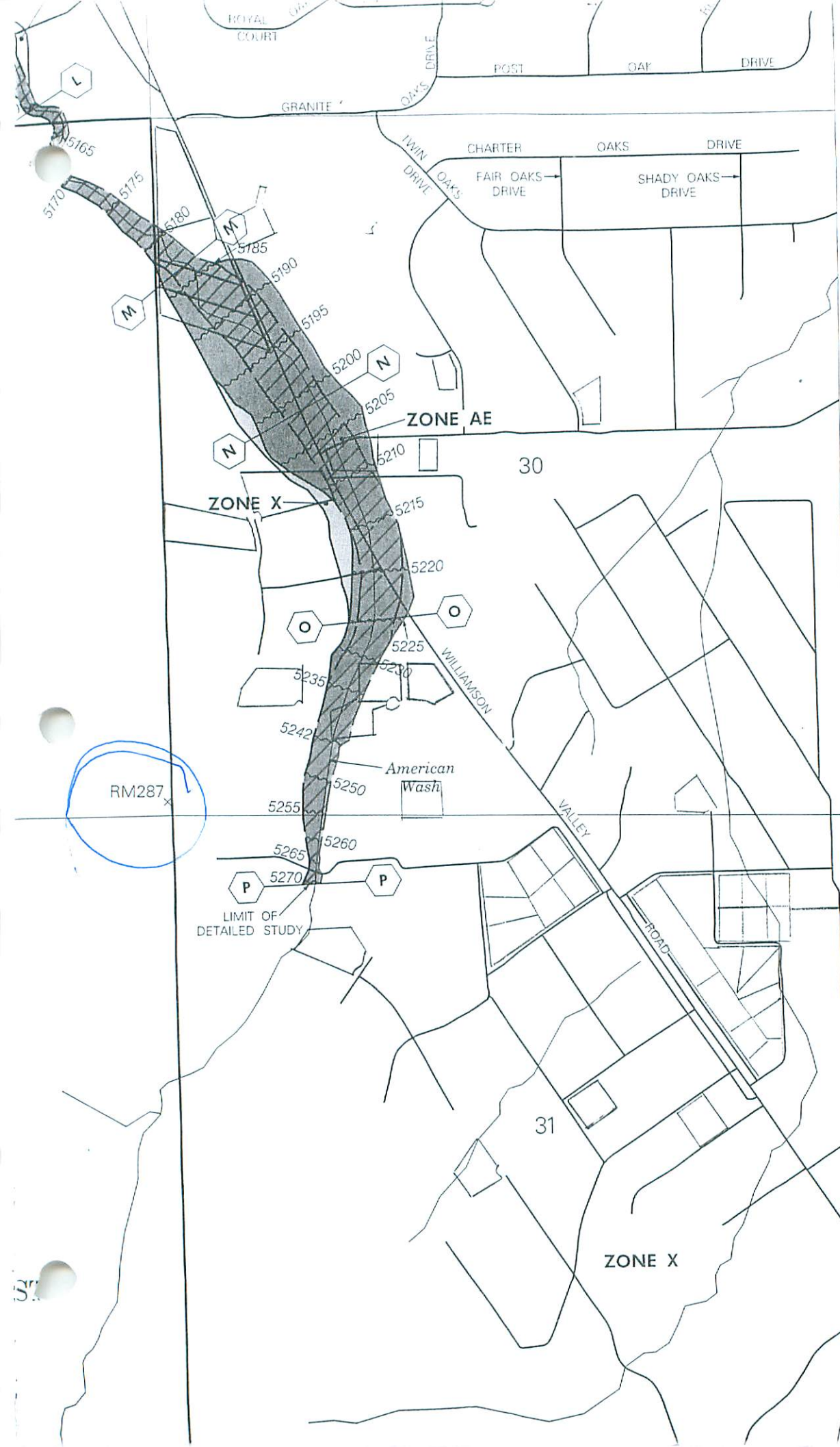
- RM286 5067.10 Aerial Mapping Company 1/2-inch rebar with aluminum cap, approximately 27 feet east of Buchanan Drive centerline at the middle of a curve, approximately 321 feet southeast of the intersection of wash flowline and Buchanan Drive which has six 24-inch diameter steel corrugate pipes, approximately 110 feet southeast of the intersection of Buchanan Drive and a dead end dirt road centerlines, approximately 1,000 feet east and approximately 2,200 feet south of the northwest corner of Section 24, T154N, R3W.
- RM287 5257.77 U.S. General Land Survey brass cap 3-inch diameter in a soil pipe being the southeast corner of Section 25, T15N, R3W, approximately 275 feet north-northwest of a house with a peaked brown shingled roof and chimney, approximately 21 feet south of a forked trunked Juniper tree with each trunk being 8-inches in diameter, approximately 24 feet southwest of a forked trunked Juniper tree with the diameter being 5-inches and 8-inches.

112°33'45"
34°41'15"



1

2



From to: F
 Corp. shot limit
 This Rest unde
 For Sect
 For Map

Ref on zon
 To call

Equestrian Estates (Wil Vly)

Williamson Valley Estates