

## ELEVATION REFERENCE MONUMENT

**ERM:** 62A  
**Panel:** 1695

**Elevation (NAVD88):** 5229.51  
**Elevation (NGVD29):** 5226.57

**Latitude:** 34°38'25" N  
**Longitude:** 112°30'09" W

**Description:** 3-1/4" diameter Yavapai County Flood Control District aluminum disk in concrete southwest of Lariat Lane and a wash crossing. Located approximately 0.22 miles north along Lariat Lane from intersection of Double Tree Rd & Lariat Lane to a point where Lariat Lane turns west from a northern direction. The station is approximately 58.6 feet west of North Lariat Lane and 26.5 feet south of West Lariat Lane.

# YAVAPAI COUNTY FLOOD CONTROL DISTRICT

62A, B, C, D

## MONUMENT RECORD FORM

### CORNER LOCATION INFORMATION

SECTION 31, CORNER INDEX CODE \_\_\_\_\_  
 TOWNSHIP 15 NORTH, RANGE 2 WEST  
62A MERIDIAN YAVAPAI COUNTY

CORNER TYPE:  
 ALIQUOT GOV'T COR.  NON-ALIQUOT GOV'T COR.  OTHER  
 FORMAL CORNER NAME: RM 62A

### NOTES FOR USING TOWNSHIP INDEX TO DETERMINE INDEX CODE

FOR ALIQUOT SECTION, QUARTER, AND SIXTEENTH CORNERS, PUT A CIRCLE AT THE CORNER LOCATION, THEN READ GRID DESIGNATION (A-1 THRU Z-25). A CORNER THAT APPLIES TO TWO OR MORE TOWNSHIPS SHOULD BE INDEXED UNDER THE TOWNSHIP NORTH OR WEST OF THE CORNER LOCATION AS INDICATED BY THE HEAVY LINE ON THE INDEX (GENERALLY THE SOUTH AND EAST LINES EXCEPT THE N.E. AND S.W. CORNERS). CLOSING CORNERS WILL BE INDEXED UNDER THE TOWNSHIP TO WHICH THEY APPLY. FOR 1/64 CORNERS AND FURTHER DIVISIONS, AND FOR NON-ALIQUOT CORNERS LYING BETWEEN GRID DESIGNATIONS OR WITHIN A GRID SQUARE ON THE INDEX, DRAW AN APPROPRIATE REFERENCE LINE OR SHAPE ON THE INDEX, THEN CIRCLE THE CORNER LOCATION AND SPECIFY THE NEAREST INDEX CODE TO THE NORTH OR WEST (IF ON A GRID LINE), OR AT THE NORTHWEST CORNER OF THE GRID BLOCK.

### COUNTY FILING INFORMATION

APPLY COUNTY STICKER HERE IF APPLICABLE

FEE \$ \_\_\_\_\_  
 DOCKET \_\_\_\_\_ PAGE \_\_\_\_\_  
 COUNTY, ARIZONA  
 DATE \_\_\_\_\_ HOUR \_\_\_\_\_  
 FEE: \_\_\_\_\_ PAGES \_\_\_\_\_  
 REQUEST OF: \_\_\_\_\_  
 TITLE: \_\_\_\_\_  
 SUBMITTED TO BE CHECKED FOR COMPLETENESS  
 FILED AT REQUEST OF COUNTY REVIEWER

### TOWNSHIP INDEX

SCALE: 1" = 10,000'

	A	B	C	D	E	F	G	H	I	J	K	L	M	N	O	P	Q	R	S	T	U	V	W	X	Y	Z
A	*	*	*	*	*	*	*	*	*	*	*	*	*	*	*	*	*	*	*	*	*	*	*	*	*	*
B	*	*	*	*	*	*	*	*	*	*	*	*	*	*	*	*	*	*	*	*	*	*	*	*	*	*
C	*	*	*	*	*	*	*	*	*	*	*	*	*	*	*	*	*	*	*	*	*	*	*	*	*	*
D	*	*	*	*	*	*	*	*	*	*	*	*	*	*	*	*	*	*	*	*	*	*	*	*	*	*
E	*	*	*	*	*	*	*	*	*	*	*	*	*	*	*	*	*	*	*	*	*	*	*	*	*	*
F	*	*	*	*	*	*	*	*	*	*	*	*	*	*	*	*	*	*	*	*	*	*	*	*	*	*
G	*	*	*	*	*	*	*	*	*	*	*	*	*	*	*	*	*	*	*	*	*	*	*	*	*	*
H	*	*	*	*	*	*	*	*	*	*	*	*	*	*	*	*	*	*	*	*	*	*	*	*	*	*
I	*	*	*	*	*	*	*	*	*	*	*	*	*	*	*	*	*	*	*	*	*	*	*	*	*	*
J	*	*	*	*	*	*	*	*	*	*	*	*	*	*	*	*	*	*	*	*	*	*	*	*	*	*
K	*	*	*	*	*	*	*	*	*	*	*	*	*	*	*	*	*	*	*	*	*	*	*	*	*	*
L	*	*	*	*	*	*	*	*	*	*	*	*	*	*	*	*	*	*	*	*	*	*	*	*	*	*
M	*	*	*	*	*	*	*	*	*	*	*	*	*	*	*	*	*	*	*	*	*	*	*	*	*	*
N	*	*	*	*	*	*	*	*	*	*	*	*	*	*	*	*	*	*	*	*	*	*	*	*	*	*
O	*	*	*	*	*	*	*	*	*	*	*	*	*	*	*	*	*	*	*	*	*	*	*	*	*	*
P	*	*	*	*	*	*	*	*	*	*	*	*	*	*	*	*	*	*	*	*	*	*	*	*	*	*
Q	*	*	*	*	*	*	*	*	*	*	*	*	*	*	*	*	*	*	*	*	*	*	*	*	*	*
R	*	*	*	*	*	*	*	*	*	*	*	*	*	*	*	*	*	*	*	*	*	*	*	*	*	*
S	*	*	*	*	*	*	*	*	*	*	*	*	*	*	*	*	*	*	*	*	*	*	*	*	*	*
T	*	*	*	*	*	*	*	*	*	*	*	*	*	*	*	*	*	*	*	*	*	*	*	*	*	*
U	*	*	*	*	*	*	*	*	*	*	*	*	*	*	*	*	*	*	*	*	*	*	*	*	*	*
V	*	*	*	*	*	*	*	*	*	*	*	*	*	*	*	*	*	*	*	*	*	*	*	*	*	*
W	*	*	*	*	*	*	*	*	*	*	*	*	*	*	*	*	*	*	*	*	*	*	*	*	*	*
X	*	*	*	*	*	*	*	*	*	*	*	*	*	*	*	*	*	*	*	*	*	*	*	*	*	*
Y	*	*	*	*	*	*	*	*	*	*	*	*	*	*	*	*	*	*	*	*	*	*	*	*	*	*
Z	*	*	*	*	*	*	*	*	*	*	*	*	*	*	*	*	*	*	*	*	*	*	*	*	*	*

### MONUMENT FIELD VISIT INFORMATION

DATE OF FIELD VISIT: Nov. 28, 2000

MONUMENT:  
 LEFT AS FOUND  FOUND & TAGGED  FOUND & REBUILT  
 RESTORED LOST CORNER  ESTABLISHED NEW ACCESSORIES

STATE PLANE COORDINATES:  ESTABLISHED TO \_\_\_\_\_ ORDER  
 ZONE:  WEST  CENTRAL  EAST  NOT ESTABLISHED

DATA:  N.A.D. 1927 (FEET)  N.A.V.D. 1929 (FEET)  
 N.A.D. 1983 (METERS)  N.A.V.D. 1988 (METERS)

Y= \_\_\_\_\_ X= \_\_\_\_\_ EL.= \_\_\_\_\_  
 N.A.D. 1983 (METERS)  N.A.V.D. 1988 (METERS)

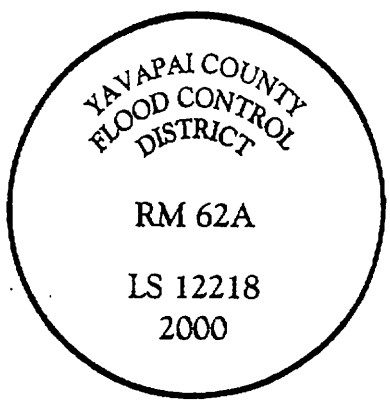
N= \_\_\_\_\_ E= \_\_\_\_\_ EL.= \_\_\_\_\_  
 LAT. \_\_\_\_\_ NORTH. LONG. \_\_\_\_\_ WEST

GEOID HEIGHT \_\_\_\_\_ SCALE FACTOR \_\_\_\_\_  
 CONTROL STATIONS USED: RM 62

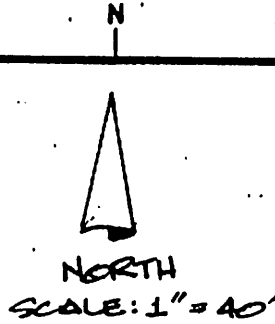
DESCRIBE RECORD EVIDENCE FOUND, INCLUDING TIES AND ACCESSORIES, OR IF A MONUMENT NOT OF RECORD, TELL WHY YOU ACCEPTED IT AS VALID. DESCRIBE ANY ACTIONS TAKEN BY YOU TO REHABILITATE OR PERPETUATE THIS MONUMENT IF FOUND IN PERISHABLE OR DETERIORATED CONDITION. IF NO EVIDENCE OF THE ORIGINAL MONUMENT OR ITS LOCATION CAN BE FOUND, DESCRIBE THE PROCEDURE FOLLOWED IN THE RESTORATION OF THE MONUMENT AND THE CONTROLLING CORNERS USED, INCLUDING ALL RECORD OF SURVEY REFERENCES. DESCRIBE ANY NEW MONUMENT SET (INCLUDING ACCESSORY MONUMENTS) AS TO MATERIAL, SHAPE, MARKING, PROJECTION OR BURIAL, AND DISPOSITION OF OLD MONUMENT. DESCRIBE NEW TIES AND ACCESSORIES IN COORDINATION WITH THE SKETCH ON THE REVERSE. DESCRIBE ANY CONFLICTING MONUMENTS OR EVIDENCE AND YOUR CONCLUSIONS.

RM 62A  
SET 3/4" DIA YCFCD ALUMINUM DISK IN  
CONCRETE NEAR LARIAT LANE WASH  
CROSSING  
ELEVATION = 5226.565

### CORNER MONUMENT CAP STAMPING



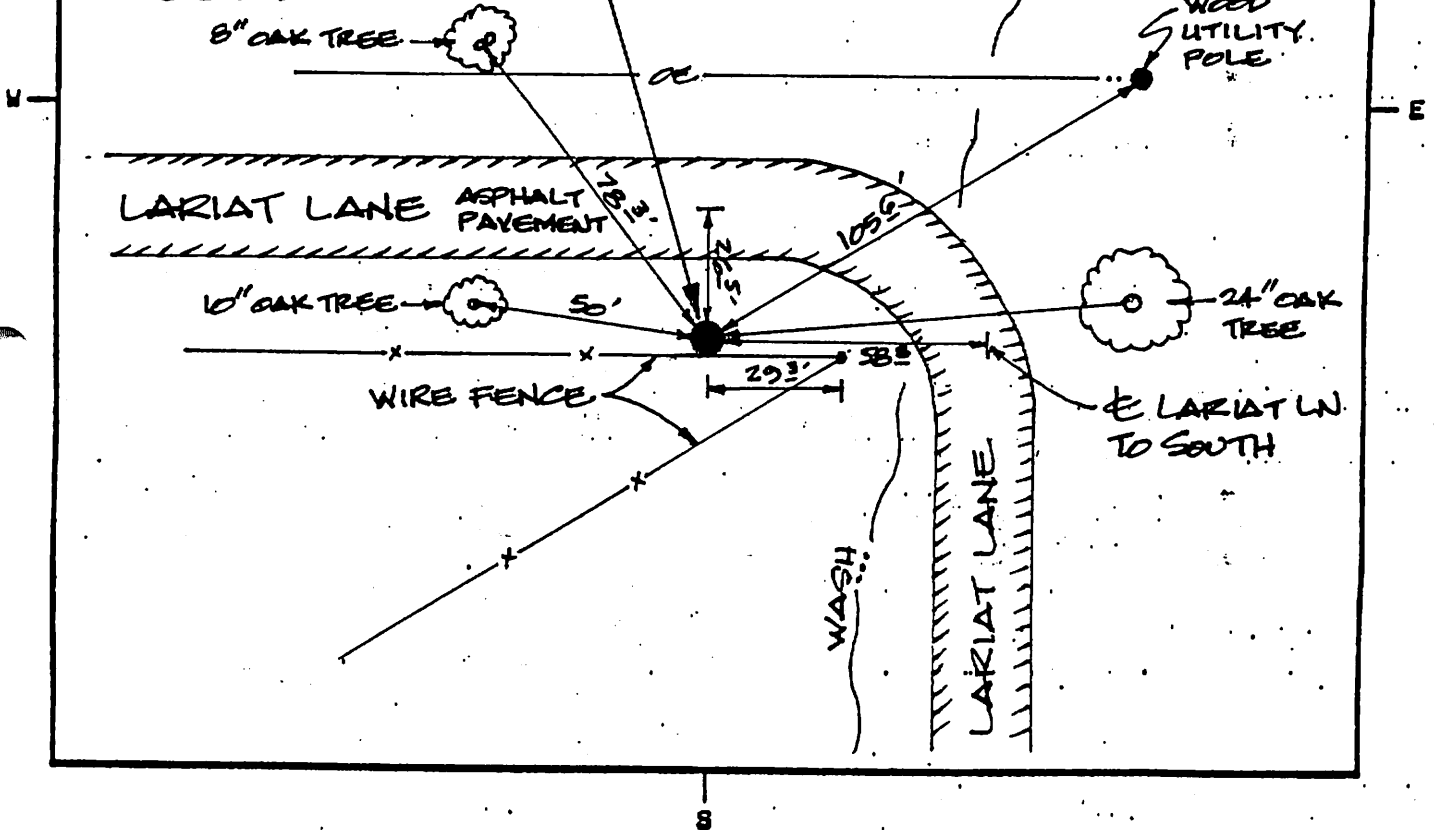
FILED RECORD OF SURVEY IN COUNTY RECORDS AT \_\_\_\_\_ BOOK \_\_\_\_\_ PAGE(S) \_\_\_\_\_  
 ATTACHED SHEETS:  WRITTEN TESTIMONY  FIELD NOTE PAGE(S) \_\_\_\_\_  OTHER \_\_\_\_\_



RM 62A

SET 3/4" DIA. YCFCD  
ALUM. DISK IN CONCRETE  
SW OF LARIAT LANE  
WASH CROSSING

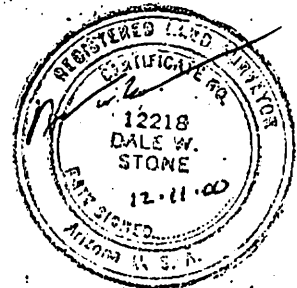
135' N OF FENCE LINE +  
263' S OF E LARIAT LN  
ELEV = 5226.565



LAND SURVEYOR IDENTIFICATION AND CERTIFICATION

I, DALE W. STONE, ARIZONA R.L.S.  
NUMBER 12218, HEREBY CERTIFY THAT THIS CORNER RECORD  
WAS PREPARED UNDER MY DIRECTION, THAT ALL MONUMENTATION  
ACTUALLY EXISTS AS SHOWN HEREON.

COMPANY NAME JDS ASSOCIATES, LLC  
 STREET ADDRESS \_\_\_\_\_  
 MAILING ADDRESS PO BOX 3240  
 CITY, STATE, ZIP CAMP VERDE AZ 86302  
 TELEPHONE NUMBER (520) 567-8543



SIGNATURE, SEAL AND DATE