

ELEVATION REFERENCE MONUMENT

ERM: 7

Panel: 1705

Elevation (NAVD88): 4761.24

Elevation (NGVD29): 4758.55

Latitude: 34°44'43" N

Longitude: 112°29'40" W

Description: 1/2-inch rebar with an aluminum cap stamped "VAUGN LS 14216". From Chino Valley at the intersection of Highway 89 and Center Street, travel west 2.3 miles to a dirt road heading south. Station is 40 feet south of Center Street, 50 feet east of the southbound dirt road.

1705

NATIONAL FLOOD INSURANCE PROGRAM

FIRM

ORIGINAL

FLOOD INSURANCE RATE MAP

**YAVAPAI COUNTY,
ARIZONA AND
INCORPORATED AREAS**

PANEL 1705 OF 3925

(SEE MAP INDEX FOR PANELS NOT PRINTED)

CONTAINS
COMMUNITY

NUMBER PANEL SUFFIX

CHINO VALLEY TOWN OF YAVAPAI COUNTY	040294	1705	F
INCORPORATED AREAS	040295	1705	F

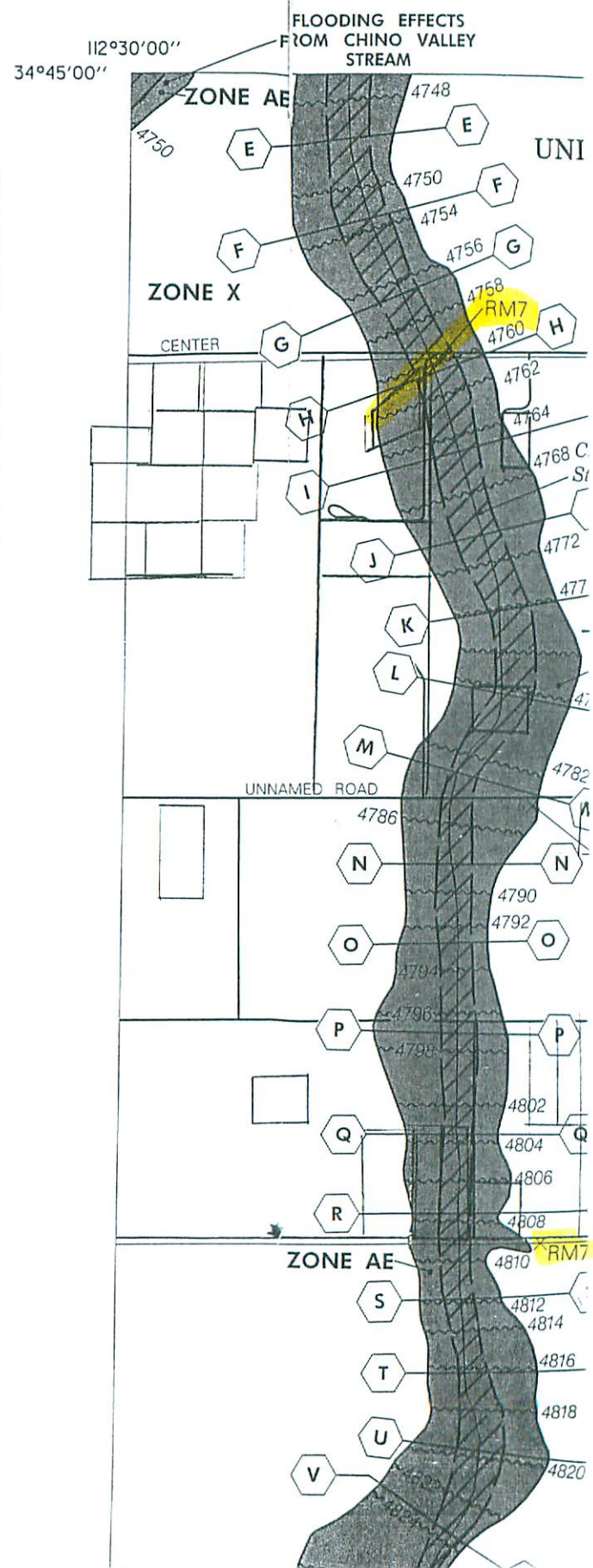
**MAP NUMBER
04025C1705 F**

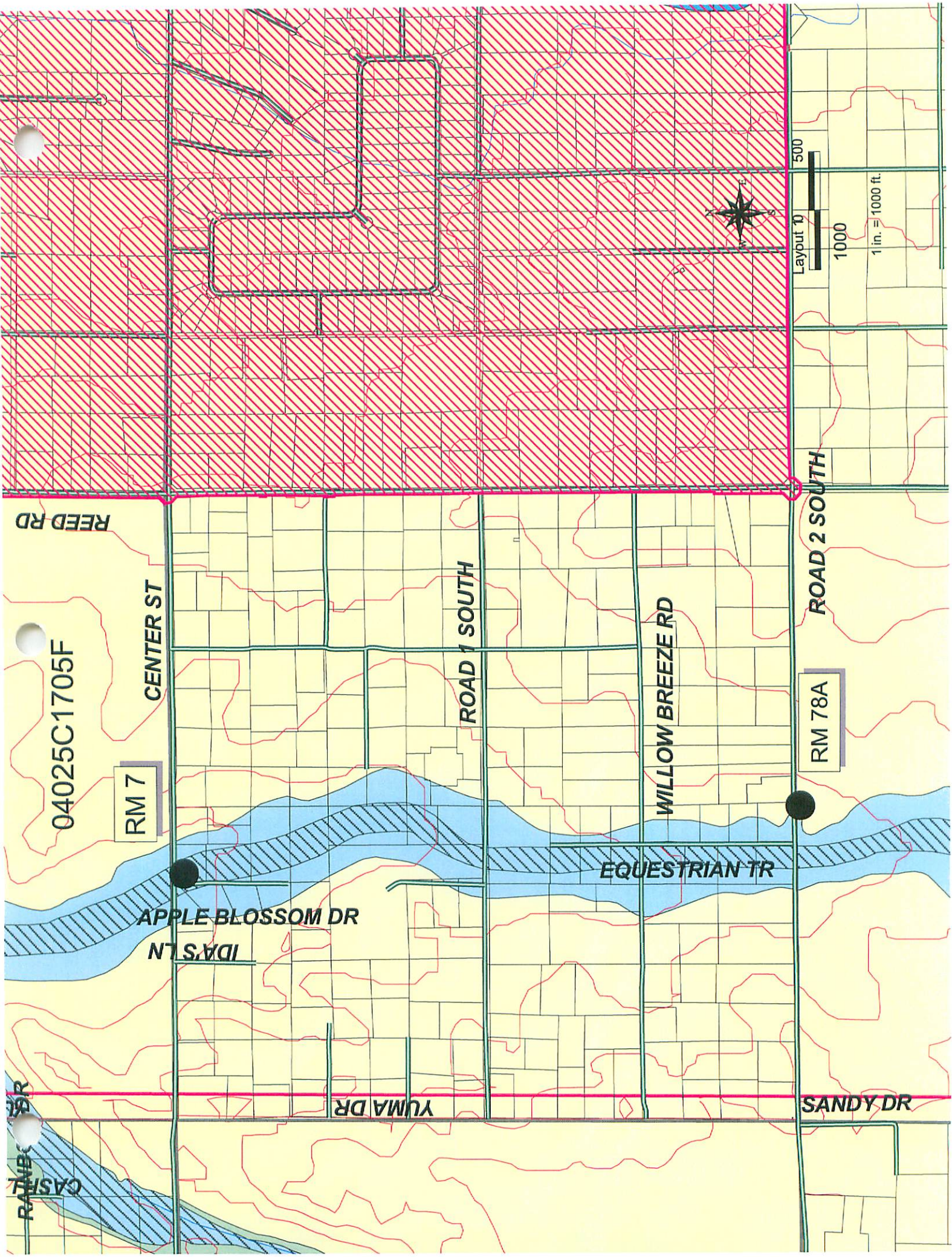
**EFFECTIVE DATE:
JUNE 6, 2001**



Federal Emergency Management Agency

REFERENCE MARK	ELEVATION (FEET NGVD)	DESCRIPTION OF LOCATION
RM7	4758.55	From Chino Valley at the intersection of Highway 89 and Center Street, travel west 2.3 miles to a dirt road heading south. Station is 40 feet south of Center Street, 50 feet east of the southbound dirt road. Station is a 1/2-inch rebar with an aluminum cap marked 14,216.
RM78	4808.67	From Chino Valley at the intersection of Highway 89 and Center Street, south 1.0 mile to Road 2-5. West 2.2 miles past Reed Road. Station is on the north side of the road, approximately 150 feet southeast of the brown 2-story house, and approximately 50 feet north of the centerline of Road 2-5. Station is a 1/2-inch rebar with an aluminum cap marked Vaughn 14216.
RM80	4782.67	From Chino Valley at the intersection of Highway 89 and Center Street, travel west 1.7 miles to Reed Road. South on Reed Road 1/2 mile to a dirt road on the west side. West on the dirt road 1/2 mile. Station is approximately 60 feet north of the centerline of the dirt road. Station is a 1/2-inch rebar with an aluminum cap marked Vaughn 14216.
RM233	4805.56	Standard Yavapai County Flood Control District 2 aluminum cap marked RLS 13941 #1. Located north of Road 4 south, west of Outlaw Road 332.22 feet, S87-01-00E of S1/4 Section 35; 2,400, 17 feet, S88-51-21 W of southwest Section; 2.7 feet north side of power pole, 97 feet south side of corner fence post #2, 4.37 feet south side of fence post #1.
RM234	4723.27	Standard Yavapai County Flood Control District 2 aluminum cap marked RLS 1394 #2 located 21 feet south of Road 1 south, 85 feet west of the centerline of Santa Cruz Wash, 2.2 feet south side of a power pole, 2.55 feet south side of a power pole, 2,654.30 feet, N89-52-29W of W1/4 of Section 26; 2,741.73 feet, N89-08-23E of east 1/4 of Section 26.





REED RD

04025C1705F

RM 7

CENTER ST

ROAD 1 SOUTH

WILLOW BREEZE RD

ROAD 2 SOUTH

RM 78A

APPLE BLOSSOM DR

IDA'S LN

EQUESTRIAN TR

YUMA DR

SANDY DR

CASH
RAMBO DR