

ELEVATION REFERENCE MONUMENT

ERM: 246

Panel: 1782

Elevation (NAVD88): 3403.53

Elevation (NGVD29): 3401.06

Latitude: 34°44'20" N

Longitude: 112°01'25" W

Description: Sixth Street and Mingus Avenue. X in top of first step of the front entrance of the Yavapai County Annex.

1782

NATIONAL FLOOD INSURANCE PROGRAM

FIRM ORIGINAL
FLOOD INSURANCE RATE MAP

**YAVAPAI COUNTY,
ARIZONA AND
INCORPORATED AREAS**

PANEL 1782 OF 3925
(SEE MAP INDEX FOR PANELS NOT PRINTED)

CONTAINS:
COMMUNITY

	<u>NUMBER</u>	<u>PANEL</u>	<u>SUFFIX</u>
COTTONWOOD, CITY OF	040096	1782	F
YAVAPAI COUNTY, UNINCORPORATED AREAS	040093	1782	F

**MAP NUMBER
04025C1782 F**

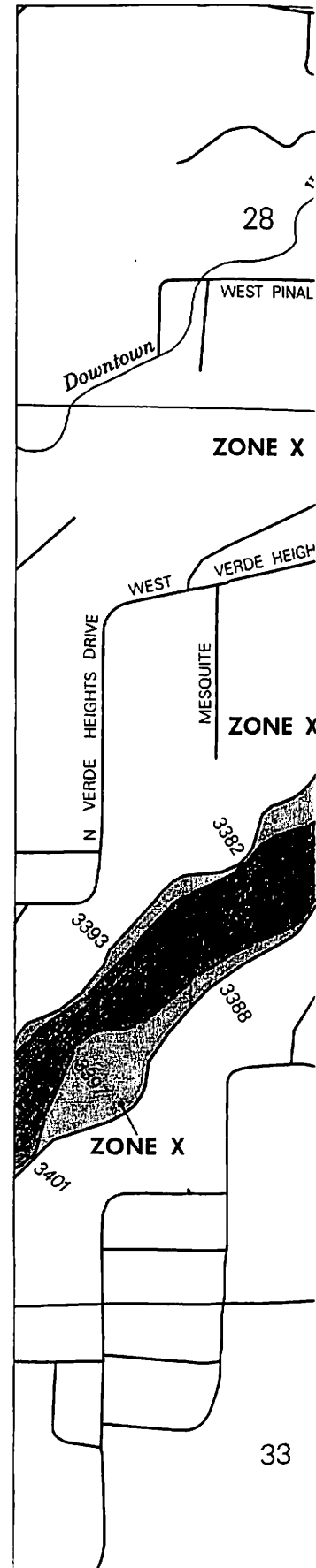
**EFFECTIVE DATE:
JUNE 6, 2001**



Federal Emergency Management Agency

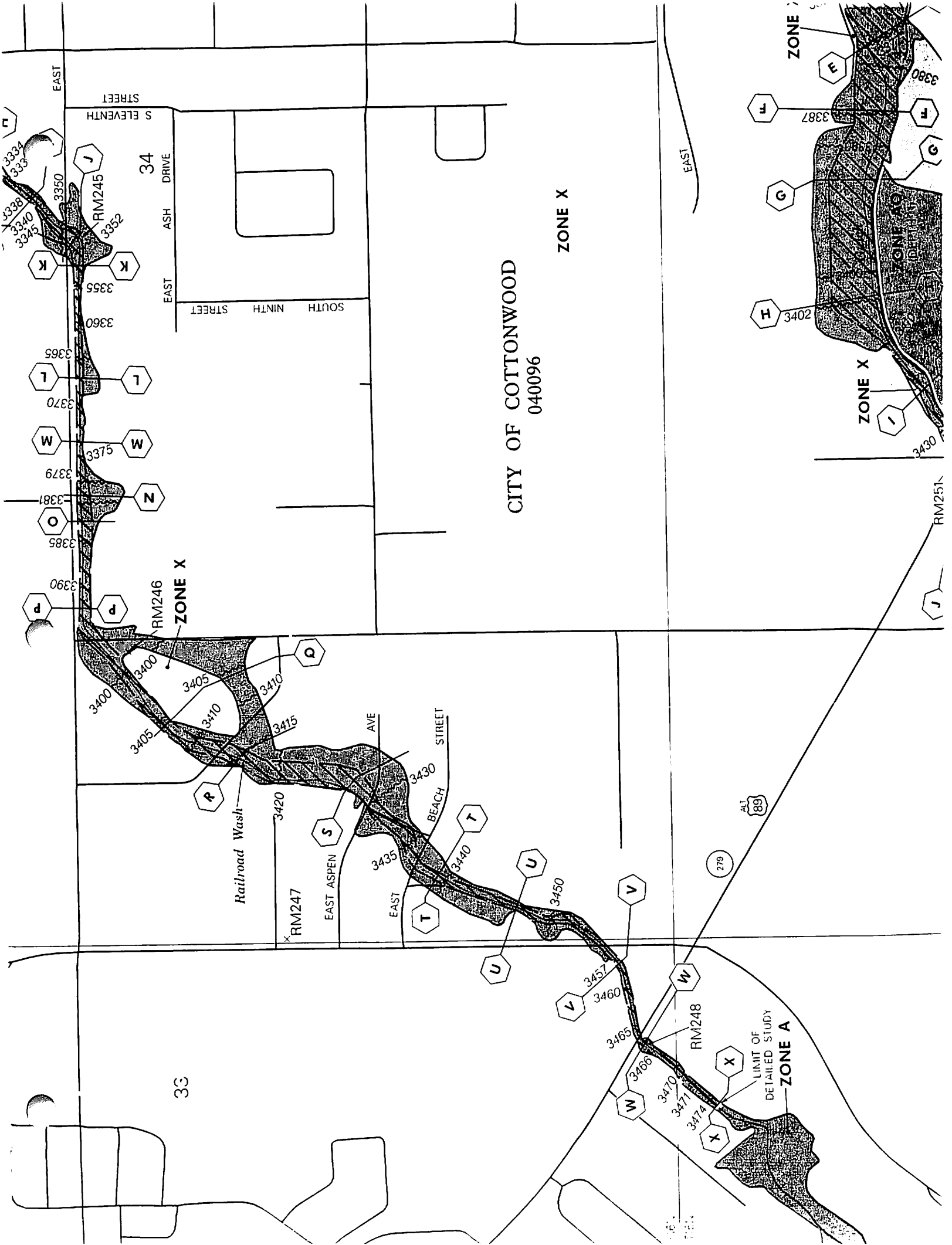
112°01'52"
34°45'00"

REFERENCE MARK	ELEVATION (FEET NGVD)	ELEVATION REFERENCE MARKS DESCRIPTION OF LOCATION
RM10	3320.69	U.S. Army Corps of Engineers copperweld rod in the centerline of Highway 89A, approximately 200 feet southeast of the old jail, approximately 900 feet north of the southwest corner Section 27, T16N, R3E.
RM244	3319.86	Located within Cottonwood corporate limits in center of North Main Street, approximately 2 blocks north of East Pima Street. Established by U.S. Army Corps of Engineers.
RM245	3347.03	South side Mingus Avenue, approximately 50 feet east of 10th Street. X in south headwall for corrugated metal pipe.
RM246	3401.06	Sixth Street and Mingus Avenue. X in top of first step of the front entrance of the Yavapai County Annex.
RM247	3436.06	Willard Street and Paula Circle. X in north rim of Mountain Bell manhole at southeast side of intersection.
RM248	3469.94	Highway 89A approximately 500 feet west of Willard Street, Arizona Highway Department aluminum disk in south headwall of 4-inch x 8-inch x 2-inch concrete box culvert.
RM249	3345.49	Main Street approximately 600 feet north of Cottonwood Street N.G.S. vertical control mark south end west headwall of 7-inch x 10-inch x 4-inch concrete box culvert.
RM250	3378.21	South side of Cottonwood Street approximately 450 feet east of 12th Street. X in north rim of Mountain Bell manhole in parking lot.
RM251	3433.95	South side of Cottonwood Street, approximately 450 feet west of 8th Street, Arizona Highway Department aluminum disk in south headwall of 5-inch x 10-inch x 5-inch concrete box culvert.
RM252	3499.52	East side of 4th Street, approximately 427 feet south of Date Street. X in west side of top flange of fire hydrant.
RM272	3318.85	Arizona Department of Transportation brass cap in zone post with 2 foot tall angle iron witness post located on north side of Highway 89A and Old State Highway 279 (16th Street) intersection, approximately 200 feet north of mile post number 355 and approximately 12 feet northeast of back of sidewalk interstate.



1

2



EAST

S ELEVENTH STREET

34

ASH DRIVE

SOUTH NINTH STREET

CITY OF COTTONWOOD
040096

ZONE X

EAST

ZONE

ZONE X

ZONE A

RM246
ZONE X

33

Railroad Wash

RM247

EAST ASPEN AVE

BEACH STREET

ALL 89

279

RM248

LIMIT OF
DETAILED STUDY
ZONE A

RM251

3332
3333
3338
3340
3345
3350
3352
3355
3360
3365
3370
3375
3379
3381
3385
3390

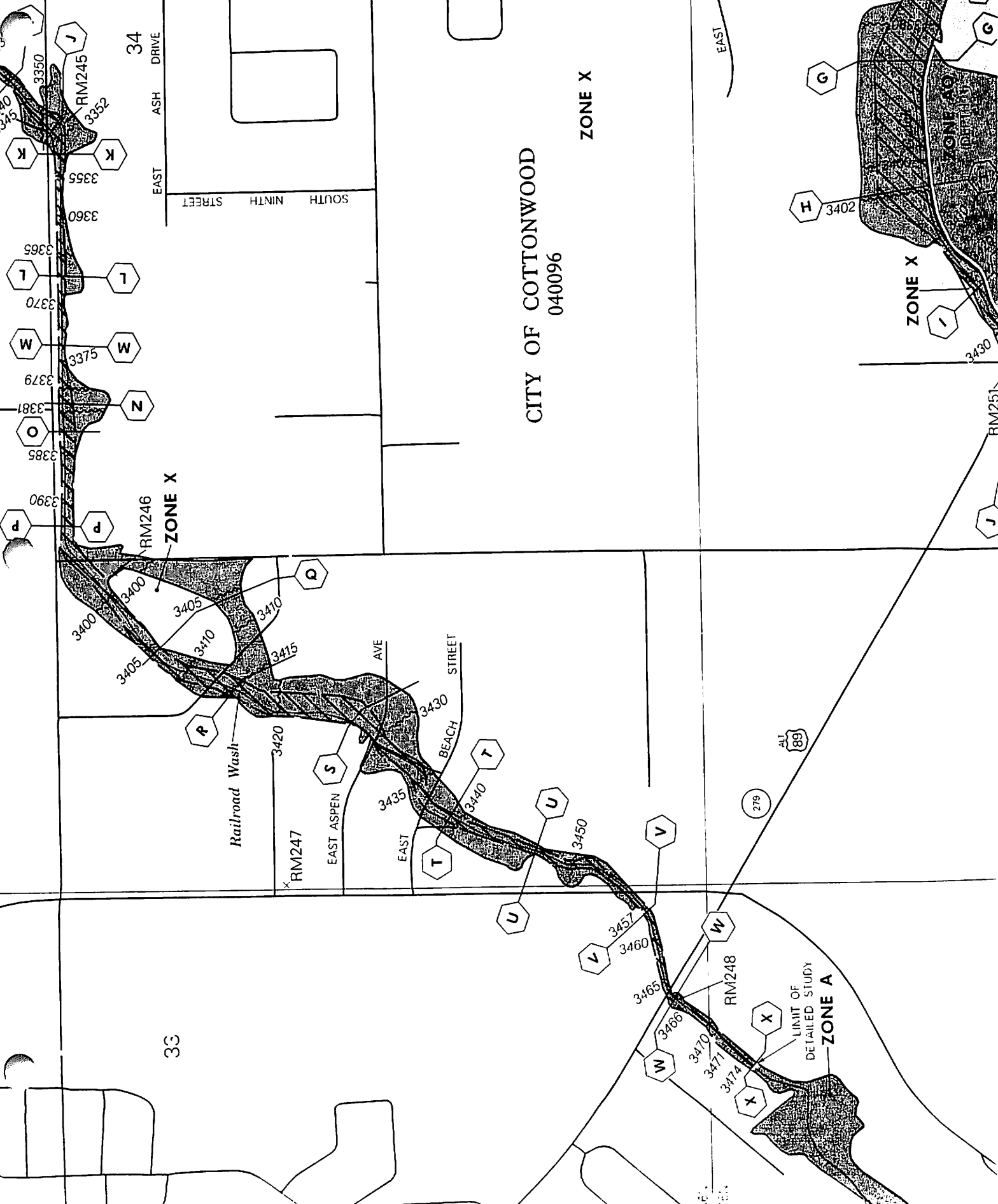
3400
3405
3410
3415

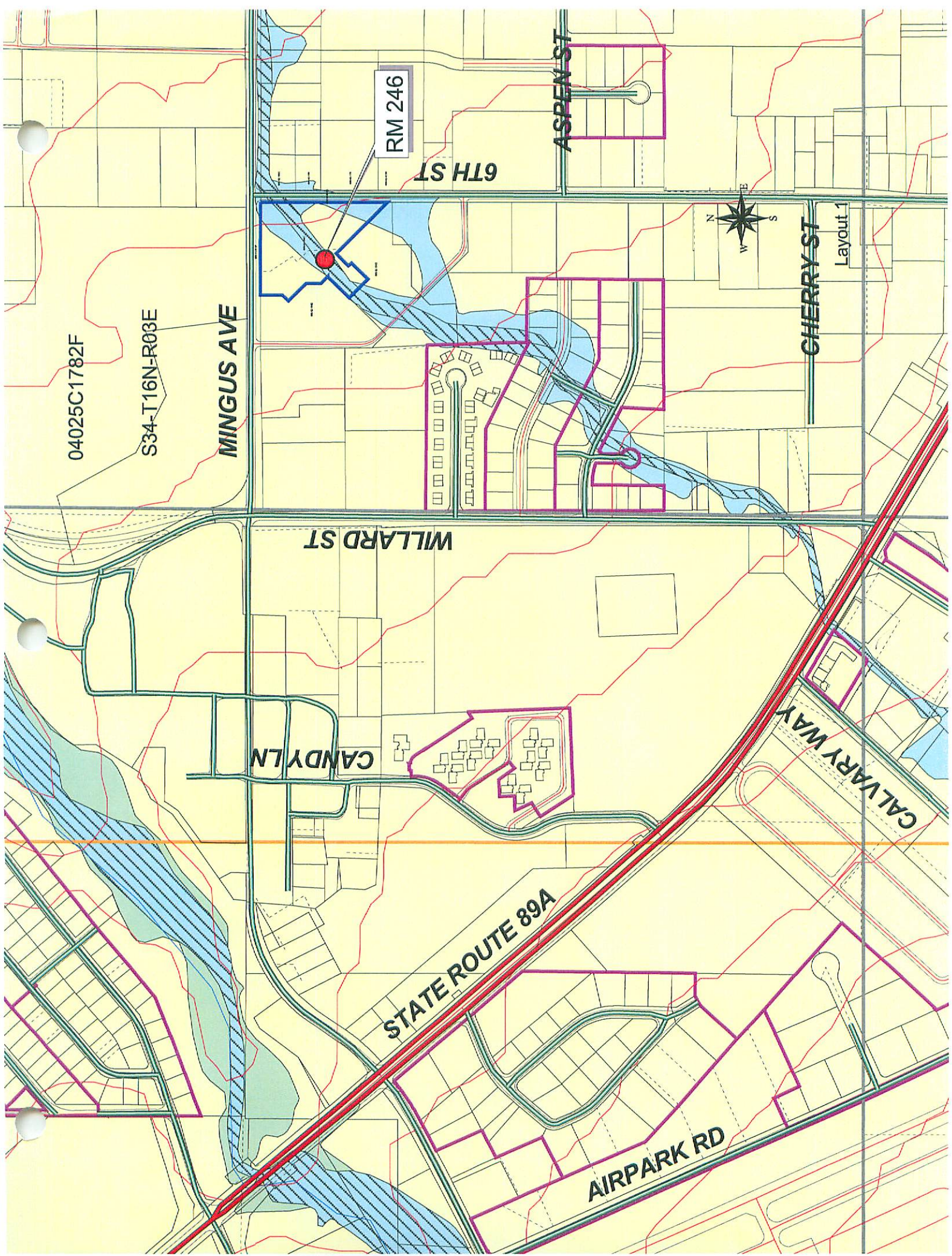
3420
3430
3435
3440
3450

3457
3460
3465
3466

3470
3471
3474

3387
3380
3402
3430

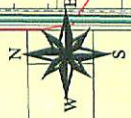




RM 246

6TH ST

ASPEN ST



Layout 1

CHERRY ST

04025C1782F

S34-T16N-R03E

MINGUS AVE

WILLARD ST

CANDY LN

STATE ROUTE 89A

AIRPARK RD

CALVARY WAY