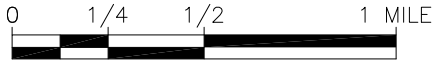
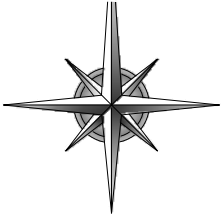


YAVAPAI COUNTY FLOOD CONTROL DISTRICT REFERENCE MONUMENT RECORD



SCALE: 1" = 1/2 MILE

SITUATED IN

SECTION 35, TOWNSHIP 16 NORTH, RANGE 4 EAST
GILA AND SALT RIVER MERIDIAN,
YAVAPAI COUNTY, ARIZONA

RM 82A

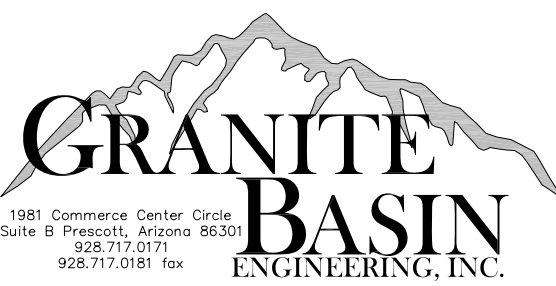
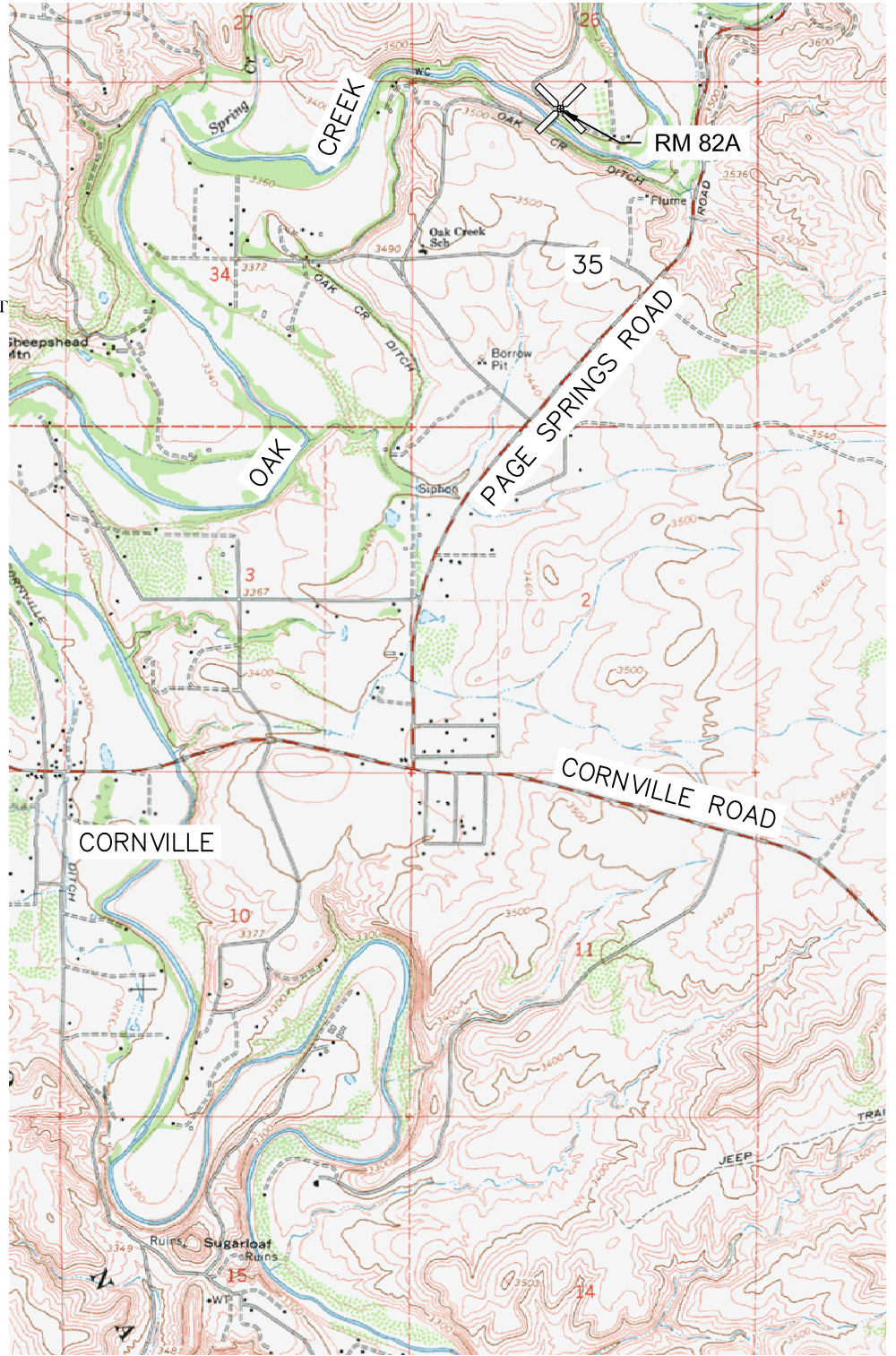
DESCRIPTION: THE POINT IS A YAVAPAI COUNTY FLOOD CONTROL DISTRICT ALUMINUM CAP MARKED 37401 SET IN CONCRETE ON THE NORTH SIDE OF OF A DIRT ROAD KNOWN AS MORMON CROSSING (WILLOW POINT ROAD) NORTH OF THE OAK CREEK LOW WATER CROSSING.

WGS84 POSITION

LATITUDE: 34°44'43.56661"N
LONGITUDE: 111°53'46.67517"W
HEIGHT: 3317.9624 ift

NAD83/NAVD88 AZ SP POSITION

NORTHING: 1362651.7492 ift
EASTING: 706118.4822 ift
ELEVATION: 3401.2222 ift



YAVAPAI COUNTY FLOOD CONTROL DISTRICT REFERENCE MONUMENT RECORD RM #82A

PREPARED FOR:
YAVAPAI COUNTY FLOOD CONTROL DISTRICT
1120 COMMERCE DRIVE
PRESCOTT, AZ 86305

GBE JOB #: 13063

DRAWN BY: TL

DATE: JUNE 2014

SCALE 1"=200'