

## ELEVATION REFERENCE MONUMENT

**ERM:** 801A

**Panel:** 2070

**Elevation (NAVD88):** 5492.85

**Elevation (NGVD29):** 5489.79

**Latitude:** 34°32'56" N

**Longitude:** 112°30'04" W

**Description:** Yavapai County Flood Control District aluminum cap at northwest corner of Oregon Avenue crossing of Miller Creek.

# YAVAPAI COUNTY FLOOD CONTROL DISTRICT

## MONUMENT RECORD FORM

### CORNER LOCATION INFORMATION

SECTION 31, CORNER INDEX CODE \_\_\_\_\_  
 TOWNSHIP 14 NORTH, RANGE 2 WEST  
6<sup>th</sup> SR MERIDIAN YAVAPAI COUNTY

CORNER TYPE:  
 ALIQUOT GOV'T COR.  NON-ALIQUOT GOV'T COR.  OTHER  
 FORMAL CORNER NAME: B01A

### COUNTY FILING INFORMATION

APPLY COUNTY STICKER HERE IF APPLICABLE

FEE \$ \_\_\_\_\_  
 DOCKET \_\_\_\_\_ PAGE \_\_\_\_\_  
 \_\_\_\_\_ COUNTY, ARIZONA  
 DATE \_\_\_\_\_ HOUR \_\_\_\_\_  
 FEE: \_\_\_\_\_ PAGES \_\_\_\_\_  
 REQUEST OF: \_\_\_\_\_  
 \_\_\_\_\_  
 TITLE: \_\_\_\_\_  
 SUBMITTED TO BE CHECKED FOR COMPLETENESS  
 FILED AT REQUEST OF COUNTY REVIEWER

**NOTES FOR USING TOWNSHIP INDEX TO DETERMINE INDEX CODE**  
 FOR ALIQUOT SECTION, QUARTER, AND SIXTEENTH CORNERS, PUT A CIRCLE AT THE CORNER LOCATION, THEN READ GRID DESIGNATION (A-1 THRU Z-25). A CORNER THAT APPLIES TO TWO OR MORE TOWNSHIPS SHOULD BE INDEXED UNDER THE TOWNSHIP NORTH OR WEST OF THE CORNER LOCATION AS INDICATED BY THE HEAVY LINE ON THE INDEX (GENERALLY THE SOUTH AND EAST LINES EXCEPT THE N.E. AND S.W. CORNERS). CLOSING CORNERS WILL BE INDEXED UNDER THE TOWNSHIP TO WHICH THEY APPLY. FOR 1/64 CORNERS AND FURTHER DIVISIONS, AND FOR NON-ALIQUOT CORNERS LYING BETWEEN GRID DESIGNATIONS OR WITHIN A GRID SQUARE ON THE INDEX, DRAW AN APPROPRIATE REFERENCE LINE OR SHAPE ON THE INDEX, THEN CIRCLE THE CORNER LOCATION AND SPECIFY THE NEAREST INDEX CODE TO THE NORTH OR WEST (IF ON A GRID LINE), OR AT THE NORTHWEST CORNER OF THE GRID BLOCK.

TITLE: \_\_\_\_\_  
 SIGNED: \_\_\_\_\_ DATE: \_\_\_\_\_

### TOWNSHIP INDEX SCALE: 1" = 10,000'

	1	2	3	4	5	6	7	8	9	10	11	12	13	14	15	16	17	18	19	20	21	22	23	24	25
A	+	+	+	+	+	+	+	+	+	+	+	+	+	+	+	+	+	+	+	+	+	+	+	+	+
B	+	+	+	+	+	+	+	+	+	+	+	+	+	+	+	+	+	+	+	+	+	+	+	+	+
C	+	+	+	+	+	+	+	+	+	+	+	+	+	+	+	+	+	+	+	+	+	+	+	+	+
D	+	+	+	+	+	+	+	+	+	+	+	+	+	+	+	+	+	+	+	+	+	+	+	+	+
E	+	+	+	+	+	+	+	+	+	+	+	+	+	+	+	+	+	+	+	+	+	+	+	+	+
F	+	+	+	+	+	+	+	+	+	+	+	+	+	+	+	+	+	+	+	+	+	+	+	+	+
G	+	+	+	+	+	+	+	+	+	+	+	+	+	+	+	+	+	+	+	+	+	+	+	+	+
H	+	+	+	+	+	+	+	+	+	+	+	+	+	+	+	+	+	+	+	+	+	+	+	+	+
I	+	+	+	+	+	+	+	+	+	+	+	+	+	+	+	+	+	+	+	+	+	+	+	+	+
J	+	+	+	+	+	+	+	+	+	+	+	+	+	+	+	+	+	+	+	+	+	+	+	+	+
K	+	+	+	+	+	+	+	+	+	+	+	+	+	+	+	+	+	+	+	+	+	+	+	+	+
L	+	+	+	+	+	+	+	+	+	+	+	+	+	+	+	+	+	+	+	+	+	+	+	+	+
M	+	+	+	+	+	+	+	+	+	+	+	+	+	+	+	+	+	+	+	+	+	+	+	+	+
N	+	+	+	+	+	+	+	+	+	+	+	+	+	+	+	+	+	+	+	+	+	+	+	+	+
O	+	+	+	+	+	+	+	+	+	+	+	+	+	+	+	+	+	+	+	+	+	+	+	+	+
P	+	+	+	+	+	+	+	+	+	+	+	+	+	+	+	+	+	+	+	+	+	+	+	+	+
Q	+	+	+	+	+	+	+	+	+	+	+	+	+	+	+	+	+	+	+	+	+	+	+	+	+
R	+	+	+	+	+	+	+	+	+	+	+	+	+	+	+	+	+	+	+	+	+	+	+	+	+
S	+	+	+	+	+	+	+	+	+	+	+	+	+	+	+	+	+	+	+	+	+	+	+	+	+
T	+	+	+	+	+	+	+	+	+	+	+	+	+	+	+	+	+	+	+	+	+	+	+	+	+
U	+	+	+	+	+	+	+	+	+	+	+	+	+	+	+	+	+	+	+	+	+	+	+	+	+
V	+	+	+	+	+	+	+	+	+	+	+	+	+	+	+	+	+	+	+	+	+	+	+	+	+
W	+	+	+	+	+	+	+	+	+	+	+	+	+	+	+	+	+	+	+	+	+	+	+	+	+
X	+	+	+	+	+	+	+	+	+	+	+	+	+	+	+	+	+	+	+	+	+	+	+	+	+
Y	+	+	+	+	+	+	+	+	+	+	+	+	+	+	+	+	+	+	+	+	+	+	+	+	+
Z	+	+	+	+	+	+	+	+	+	+	+	+	+	+	+	+	+	+	+	+	+	+	+	+	+

### MONUMENT FIELD VISIT INFORMATION

DATE OF FIELD VISIT: 9/6/97

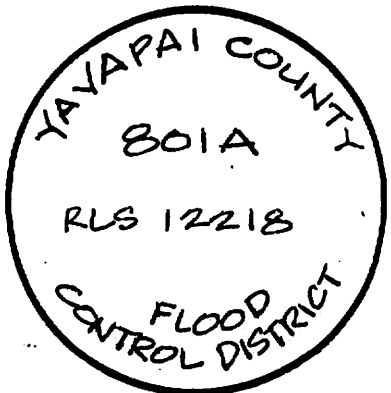
MONUMENT:  
 LEFT AS FOUND  FOUND & TAGGED  FOUND & REBUILT  
 RESTORED LOST CORNER  ESTABLISHED NEW ACCESSORIES  
 STATE PLANE COORDINATES:  ESTABLISHED TO \_\_\_\_\_ ORDER  
 ZONE:  WEST  CENTRAL  EAST  NOT ESTABLISHED  
 DATA:  N.A.D. 1927 (FEET)  N.A.V.D. 1929 (FEET)  
 Y= \_\_\_\_\_ X= \_\_\_\_\_ EL.= \_\_\_\_\_  
 N.A.D. 1983 (METERS)  N.A.V.D. 1988 (METERS)  
 N= \_\_\_\_\_ E= \_\_\_\_\_ EL.= \_\_\_\_\_  
 LAT. \_\_\_\_\_ NORTH, LONG. \_\_\_\_\_ WEST  
 GEOID HEIGHT \_\_\_\_\_ SCALE FACTOR \_\_\_\_\_

CONTROL STATIONS USED: B01 PER WOOD, PATEL  
\$ ASSOC WORK MAP EXHIBIT M-1

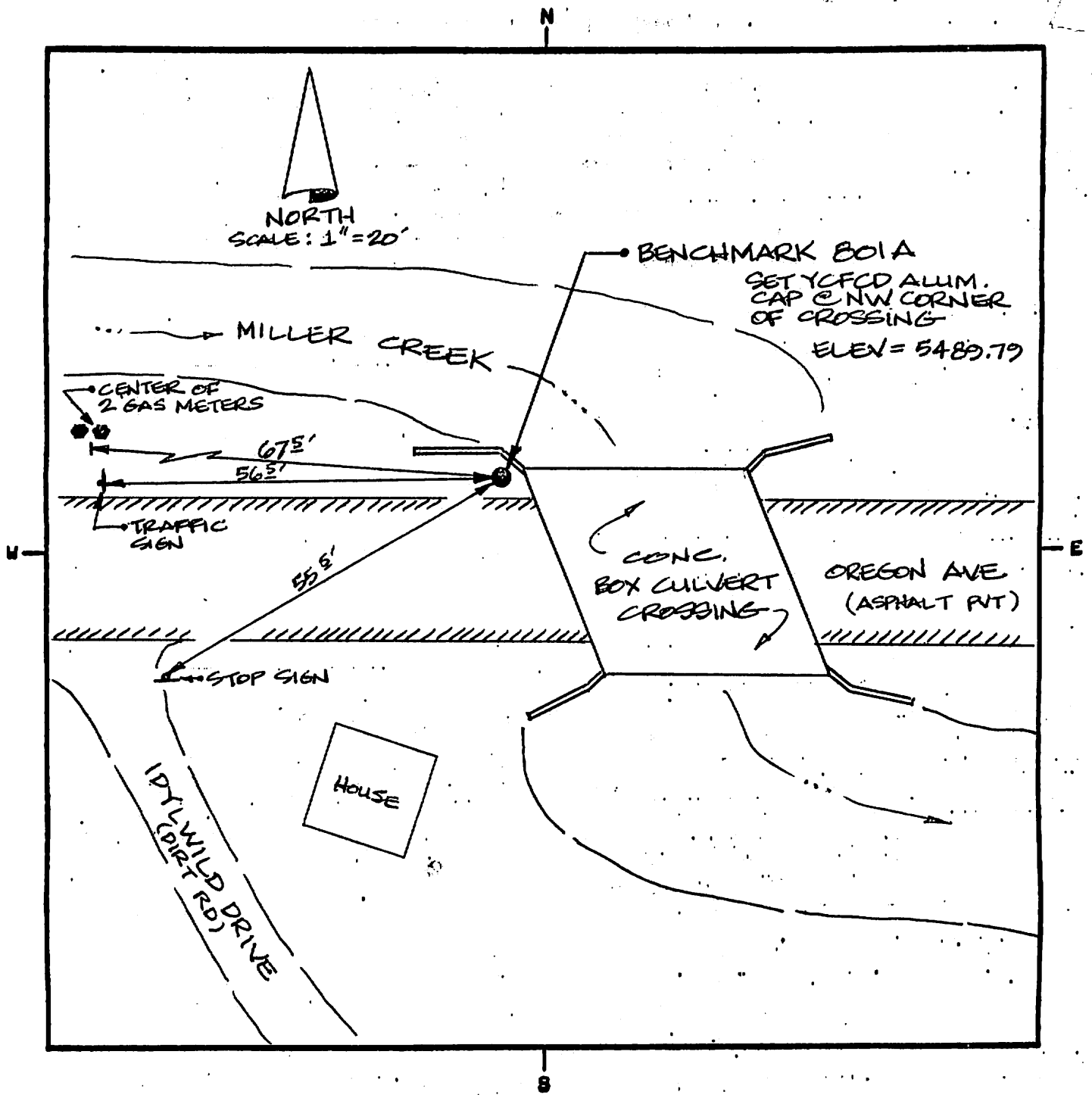
DESCRIBE RECORD EVIDENCE FOUND, INCLUDING TIES AND ACCESSORIES, OR IF A MONUMENT NOT OF RECORD, TELL WHY YOU ACCEPTED IT AS VALID. DESCRIBE ANY ACTIONS TAKEN BY YOU TO REHABILITATE OR PERPETUATE THIS MONUMENT IF FOUND IN PERISHABLE OR DETERIORATED CONDITION. IF NO EVIDENCE OF THE ORIGINAL MONUMENT OR ITS LOCATION CAN BE FOUND, DESCRIBE THE PROCEDURE FOLLOWED IN THE RESTORATION OF THE MONUMENT AND THE CONTROLLING CORNERS USED, INCLUDING ALL RECORD OF SURVEY REFERENCES. DESCRIBE ANY NEW MONUMENT SET (INCLUDING ACCESSORY MONUMENTS) AS TO MATERIAL, SHAPE, MARKING, PROJECTION OR BURIAL, AND DISPOSITION OF OLD MONUMENT. DESCRIBE NEW TIES AND ACCESSORIES IN COORDINATION WITH THE SKETCH ON THE REVERSE. DESCRIBE ANY CONFLICTING MONUMENTS OR EVIDENCE AND YOUR CONCLUSIONS.

B01A  
SET YCFCD ALUM CAP @ NW CORNER OREGON AVE  
CROSSING OF MILLER CREEK  
ELEV = 5489.79

### CORNER MONUMENT CAP STAMPING



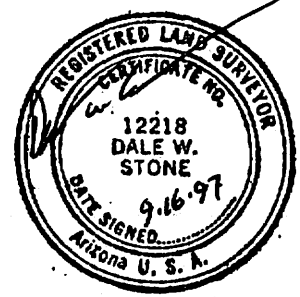
FILED RECORD OF SURVEY IN COUNTY RECORDS AT \_\_\_\_\_ BOOK \_\_\_\_\_, PAGE(S) \_\_\_\_\_  
 ATTACHED SHEETS:  WRITTEN TESTIMONY  FIELD NOTE PAGE(S) \_\_\_\_\_  OTHER \_\_\_\_\_  
 (OVER)



LAND SURVEYOR IDENTIFICATION AND CERTIFICATION

I, DALE W. STONE, ARIZONA R.L.S. NUMBER 12218, HEREBY CERTIFY THAT THIS CORNER RECORD WAS PREPARED UNDER MY DIRECTION, THAT ALL MONUMENTATION ACTUALLY EXISTS AS SHOWN HEREON.

COMPANY NAME DALE W. STONE RLS  
 STREET ADDRESS \_\_\_\_\_  
 MAILING ADDRESS PO BOX 1288  
 CITY, STATE, ZIP CAMP VERDE AZ 86322  
 TELEPHONE NUMBER (520) 567-5344



X \_\_\_\_\_  
 SIGNATURE, SEAL AND DATE