

## ELEVATION REFERENCE MONUMENT

**ERM:** 62E

**Panel:** 2080

**Elevation (NAVD88):** 5319.43

**Elevation (NGVD29):** 5316.47

**Latitude:** 34°37'24" N

**Longitude:** 112°29'35" W

**Description:** 2" diameter Yavapai County Flood Control District aluminum cap set in concrete flush with natural ground under plastic rail fence line located northeast of the intersection of Williamson Valley Road & Ridge Drive. The station is approximately 25 feet east of the easterly edge of Williamson Valley Road and 50 feet east of the Williamson Valley Road centerline. Station is approximately 37 feet northwesterly from the end of the plastic rail fence.

# YAVAPAI COUNTY FLOOD CONTROL DISTRICT

## MONUMENT RECORD FORM

### CORNER LOCATION INFORMATION

SECTION 5, CORNER INDEX CODE \_\_\_\_\_  
 TOWNSHIP 14 NORTH, RANGE 2 WEST  
63RKE MERIDIAN YAVAPAI COUNTY

CORNER TYPE:

ALIQUOT GOV'T COR.  NON-ALIQUOT GOV'T COR.  OTHER

FORMAL CORNER NAME: RM 62E

### NOTES FOR USING TOWNSHIP INDEX TO DETERMINE INDEX CODE

FOR ALIQUOT SECTION, QUARTER, AND SIXTEENTH CORNERS, PUT A CIRCLE AT THE CORNER LOCATION, THEN READ GRID DESIGNATION (A-1 THRU Z-25). A CORNER THAT APPLIES TO TWO OR MORE TOWNSHIPS SHOULD BE INDEXED UNDER THE TOWNSHIP NORTH OR WEST OF THE CORNER LOCATION AS INDICATED BY THE HEAVY LINE ON THE INDEX (GENERALLY THE SOUTH AND EAST LINES EXCEPT THE N.E. AND S.W. CORNERS). CLOSING CORNERS WILL BE INDEXED UNDER THE TOWNSHIP TO WHICH THEY APPLY. FOR 1/64 CORNERS AND FURTHER DIVISIONS, AND FOR NON-ALIQUOT CORNERS LYING BETWEEN GRID DESIGNATIONS OR WITHIN A GRID SQUARE ON THE INDEX, DRAW AN APPROPRIATE REFERENCE LINE OR SHAPE ON THE INDEX, THEN CIRCLE THE CORNER LOCATION AND SPECIFY THE NEAREST INDEX CODE TO THE NORTH OR WEST (IF ON A GRID LINE), OR AT THE NORTHWEST CORNER OF THE GRID BLOCK.

### MONUMENT FIELD VISIT INFORMATION

DATE OF FIELD VISIT: NOV 29, 2002

MONUMENT:

LEFT AS FOUND  FOUND & TAGGED  FOUND & REBUILT

RESTORED LOST CORNER  ESTABLISHED NEW ACCESSORIES

STATE PLANE COORDINATES:  ESTABLISHED TO \_\_\_\_\_ ORDER

ZONE:  WEST  CENTRAL  EAST  NOT ESTABLISHED

DATA:  N.A.D.1927 (FEET)  N.A.V.D.1928 (FEET)

Y= \_\_\_\_\_ X= \_\_\_\_\_ EL.= \_\_\_\_\_

N.A.D.1983 (METERS)  N.A.V.D.1988 (METERS)

N= \_\_\_\_\_ E= \_\_\_\_\_ EL.= \_\_\_\_\_

LAT. \_\_\_\_\_ NORTH, LONG. \_\_\_\_\_ WEST

GEOID HEIGHT \_\_\_\_\_ SCALE FACTOR \_\_\_\_\_

CONTROL STATIONS USED: RM 62E PER FIRM

PANEL 1010 ELEV 5257.77

DESCRIBE RECORD EVIDENCE FOUND, INCLUDING TIES AND ACCESSORIES, OR IF A MONUMENT NOT OF RECORD, TELL WHY YOU ACCEPTED IT AS VALID. DESCRIBE ANY ACTIONS TAKEN BY YOU TO REHABILITATE OR PERPETUATE THIS MONUMENT IF FOUND IN PERISHABLE OR DETERIORATED CONDITION. IF NO EVIDENCE OF THE ORIGINAL MONUMENT OR ITS LOCATION CAN BE FOUND, DESCRIBE THE PROCEDURE FOLLOWED IN THE RESTORATION OF THE MONUMENT AND THE CONTROLLING CORNERS USED, INCLUDING ALL RECORD OF SURVEY REFERENCES. DESCRIBE ANY NEW MONUMENT SET (INCLUDING ACCESSORY MONUMENTS) AS TO MATERIAL, SHAPE, MARKING, PROJECTION OR BURIAL, AND DISPOSITION OF OLD MONUMENT. DESCRIBE NEW TIES AND ACCESSORIES IN COORDINATION WITH THE SKETCH ON THE REVERSE. DESCRIBE ANY CONFLICTING MONUMENTS OR EVIDENCE AND YOUR CONCLUSIONS.

RM 62E

FOUND 2" DIA. Y.C.F.C.D. ALUM. CAP SET IN CONCRETE NEAR NE CORNER INTERSECTION OF WILLIAMSON VALLEY RD & RIDGE DR.

CAP WAS UNSTAMPED ~ STAMPED AS SHOWN ON RIGHT AFTER FIELD CHECKS

ELEV = 5316.47

### COUNTY FILING INFORMATION

APPLY COUNTY STICKER HERE IF APPLICABLE

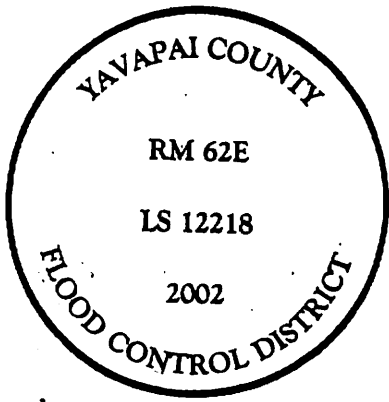
FEE \$ \_\_\_\_\_  
 DOCKET \_\_\_\_\_ PAGE \_\_\_\_\_  
 \_\_\_\_\_ COUNTY, ARIZONA  
 DATE \_\_\_\_\_ HOUR \_\_\_\_\_  
 FEE: \_\_\_\_\_ PAGES \_\_\_\_\_  
 REQUEST OF: \_\_\_\_\_  
 TITLE: \_\_\_\_\_  
 SUBMITTED TO BE CHECKED FOR COMPLETENESS  
 FILED AT REQUEST OF COUNTY REVIEWER

TITLE: \_\_\_\_\_  
 SIGNED: \_\_\_\_\_ DATE: \_\_\_\_\_

### TOWNSHIP INDEX SCALE: 1" = 10,000'

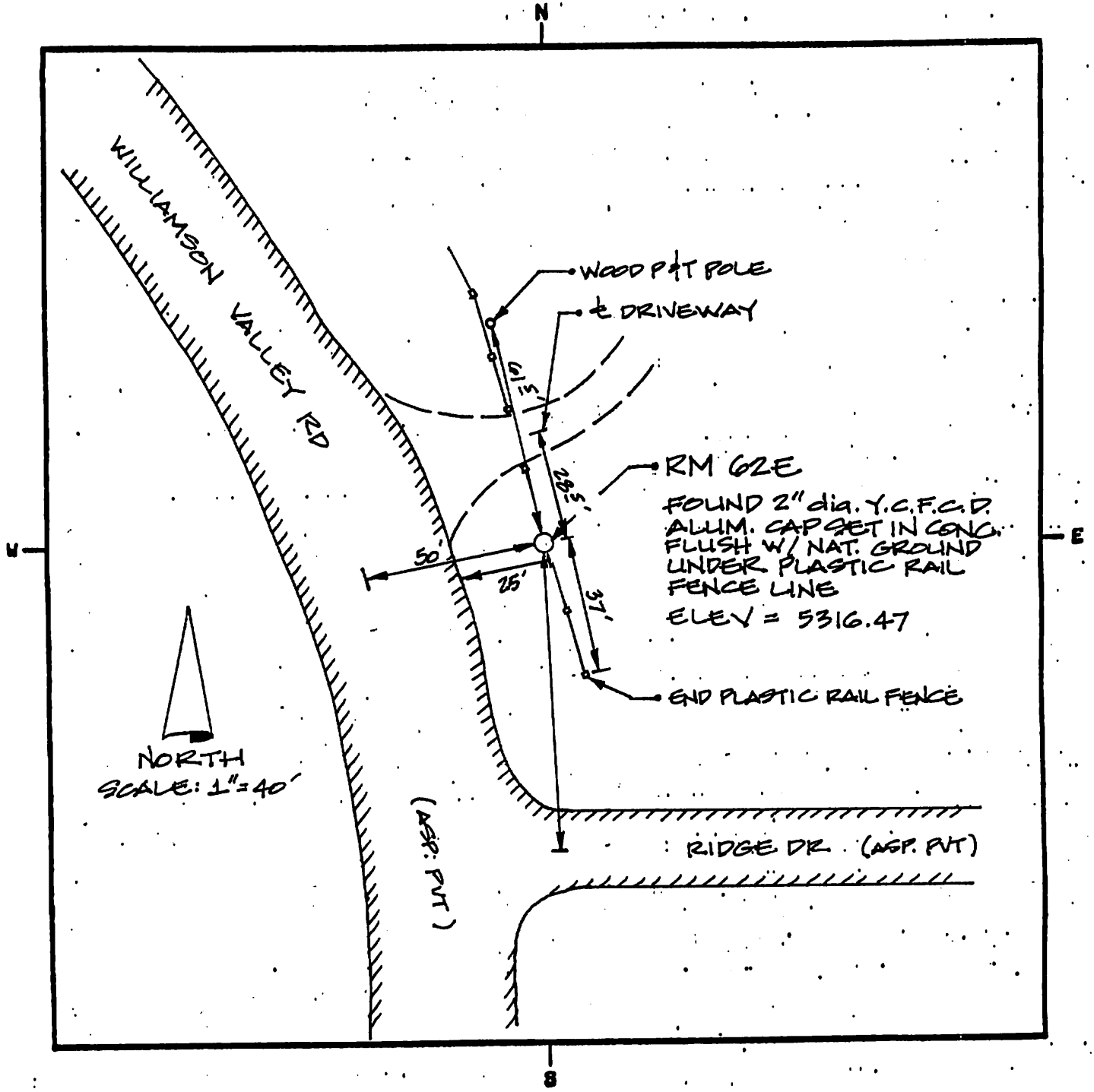
	A	B	C	D	E	F	G	H	I	J	K	L	M	N	O	P	Q	R	S	T	U	V	W	X	Y	Z
A	•	•	•	•	•	•	•	•	•	•	•	•	•	•	•	•	•	•	•	•	•	•	•	•	•	•
B	•	•	•	•	•	•	•	•	•	•	•	•	•	•	•	•	•	•	•	•	•	•	•	•	•	•
C	•	•	•	•	•	•	•	•	•	•	•	•	•	•	•	•	•	•	•	•	•	•	•	•	•	•
D	•	•	•	•	•	•	•	•	•	•	•	•	•	•	•	•	•	•	•	•	•	•	•	•	•	•
E	•	•	•	•	•	•	•	•	•	•	•	•	•	•	•	•	•	•	•	•	•	•	•	•	•	•
F	•	•	•	•	•	•	•	•	•	•	•	•	•	•	•	•	•	•	•	•	•	•	•	•	•	•
G	•	•	•	•	•	•	•	•	•	•	•	•	•	•	•	•	•	•	•	•	•	•	•	•	•	•
H	•	•	•	•	•	•	•	•	•	•	•	•	•	•	•	•	•	•	•	•	•	•	•	•	•	•
I	•	•	•	•	•	•	•	•	•	•	•	•	•	•	•	•	•	•	•	•	•	•	•	•	•	•
J	•	•	•	•	•	•	•	•	•	•	•	•	•	•	•	•	•	•	•	•	•	•	•	•	•	•
K	•	•	•	•	•	•	•	•	•	•	•	•	•	•	•	•	•	•	•	•	•	•	•	•	•	•
L	•	•	•	•	•	•	•	•	•	•	•	•	•	•	•	•	•	•	•	•	•	•	•	•	•	•
M	•	•	•	•	•	•	•	•	•	•	•	•	•	•	•	•	•	•	•	•	•	•	•	•	•	•
N	•	•	•	•	•	•	•	•	•	•	•	•	•	•	•	•	•	•	•	•	•	•	•	•	•	•
O	•	•	•	•	•	•	•	•	•	•	•	•	•	•	•	•	•	•	•	•	•	•	•	•	•	•
P	•	•	•	•	•	•	•	•	•	•	•	•	•	•	•	•	•	•	•	•	•	•	•	•	•	•
Q	•	•	•	•	•	•	•	•	•	•	•	•	•	•	•	•	•	•	•	•	•	•	•	•	•	•
R	•	•	•	•	•	•	•	•	•	•	•	•	•	•	•	•	•	•	•	•	•	•	•	•	•	•
S	•	•	•	•	•	•	•	•	•	•	•	•	•	•	•	•	•	•	•	•	•	•	•	•	•	•
T	•	•	•	•	•	•	•	•	•	•	•	•	•	•	•	•	•	•	•	•	•	•	•	•	•	•
U	•	•	•	•	•	•	•	•	•	•	•	•	•	•	•	•	•	•	•	•	•	•	•	•	•	•
V	•	•	•	•	•	•	•	•	•	•	•	•	•	•	•	•	•	•	•	•	•	•	•	•	•	•
W	•	•	•	•	•	•	•	•	•	•	•	•	•	•	•	•	•	•	•	•	•	•	•	•	•	•
X	•	•	•	•	•	•	•	•	•	•	•	•	•	•	•	•	•	•	•	•	•	•	•	•	•	•
Y	•	•	•	•	•	•	•	•	•	•	•	•	•	•	•	•	•	•	•	•	•	•	•	•	•	•
Z	•	•	•	•	•	•	•	•	•	•	•	•	•	•	•	•	•	•	•	•	•	•	•	•	•	•

### CORNER MONUMENT CAP STAMPING



FILED RECORD OF SURVEY IN COUNTY RECORDS AT \_\_\_\_\_ BOOK \_\_\_\_\_ PAGE(S) \_\_\_\_\_  
 ATTACHED SHEETS:  WRITTEN TESTIMONY  FIELD NOTE PAGE(S) \_\_\_\_\_  OTHER \_\_\_\_\_

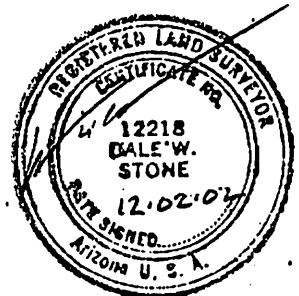
2080



NORTH  
SCALE: 1" = 40'

LAND SURVEYOR IDENTIFICATION AND CERTIFICATION

I, DALE W. STONE, ARIZONA R.L.S. NUMBER 12218, HEREBY CERTIFY THAT THIS CORNER RECORD WAS PREPARED UNDER MY DIRECTION, THAT ALL MONUMENTATION ACTUALLY EXISTS AS SHOWN HEREON.



COMPANY NAME JDS ASSOCIATES LLC  
 STREET ADDRESS \_\_\_\_\_  
 MAILING ADDRESS PO BOX 3240  
 CITY, STATE, ZIP CAMP VERDE, AZ 86322  
 TELEPHONE NUMBER 928.867.8543

X \_\_\_\_\_  
SIGNATURE, SEAL AND DATE