

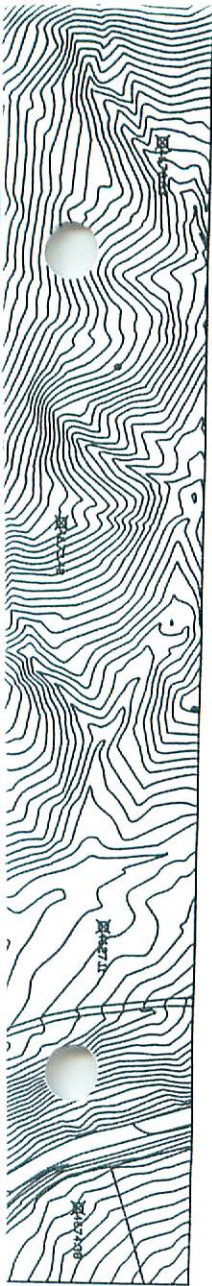
ELEVATION REFERENCE MONUMENT

ERM: YW-12
Panel: 2150

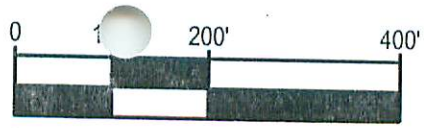
Elevation (NAVD88): 4962.76
Elevation (NGVD29): 4960.06

Latitude: 34°32'46.6" N
Longitude: 112°10'33.8" W

Description: Brass cap flush with concrete in top of headwall on the south side of State Highway 169. Station is approximately 4 miles easterly along State Highway 169 from intersection of State Highway 169 & State Highway 69. Southeast Corner of Section 32, Township 14 North, Range 2 East. Approximately 110 feet north and approximately 2,410 feet west of approximate Southeast Corner of Section 32, Township 14 North, Range 2 East.



MATCHLINE SEES



State Plane Coordinates

SCALE: 1" = 200'
2 ft contour interval

ELEVATION REFERENCE MARKS

LABEL	NORTHING	EASTING	ELEV.	DESCRIPTION
WY-1	1279077.600	631195.153	4582.290	General Land Office Brass Cap on pole (1.1' above natural ground) Closing Corner at Southwest Corner of Section 8, Township 13 North, Range 2 East
YW-2	1300231.023	632261.741	5236.614	General Land Office Brass Cap on pole (1.6' above natural ground) North Quarter Corner of Section 27, Township 14 North, Range 2 East
YW-3	1290171.880	619036.640	5053.396	General Land Office Brass Cap on pole (1.8' above natural ground) Southeast Corner of Section 31, Township 14 North, Range 2 East
YW-4	1290168.790	620693.526	4993.299	Aluminum Cap on pole (0.8' above natural ground) Northeast Corner of Section 1, Township 13 North, Range 1 1/2 East Stamped "RLS 20357"
YW-5	1290161.754	624314.696	4938.939	General Land Office Brass Cap on pole (2.4' above natural ground) Southeast Corner of Section 32, Township 14 North, Range 2 East
YW-6	1284407.090	620677.666	5031.109	General Land Office Brass Cap on pole (1.6' above natural ground) Northeast Corner of Section 12, Township 13 North, Range 2 East
YW-7	1284392.429	623322.294	4903.033	General Land Office Brass Cap on pole (1.2' above natural ground) North Quarter Corner of Section 7, Township 13 North, Range 2 East
YW-8	1284376.324	625966.254	4801.330	General Land Office Brass Cap on pole (1.6' above natural ground) Northeast Corner of Section 7, Township 13 North, Range 2 East
YW-9	1281733.684	625960.404	4759.924	General Land Office Brass Cap on pole (1.6' above natural ground) East Quarter Corner of Section 8, Township 13 North, Range 2 East
YW-10	1279094.150	625952.649	4858.343	General Land Office Brass Cap on pole (1.7' above natural ground) Northeast Corner of Section 18, Township 13 North, Range 2 East
YW-11	1273817.907	628588.208	4597.591	General Land Office Brass Cap on pole (2.0' above natural ground) North Quarter Corner of Section 20, Township 13 North, Range 2 East
YW-12	1290277.945	621897.241	4962.757	Brass Cap flush with concrete in top of headwall
YW-13	1290162.474	623334.314	4947.523	General Land Office Brass Cap on pole (1.2' above natural ground) South Quarter Corner of Section 34, Township 14 North, Range 2 East

POCH:2002.0000)

d from