

## ELEVATION REFERENCE MONUMENT

**ERM:** 122  
**Panel:** 2205

**Elevation (NAVD88):** 3130.08  
**Elevation (NGVD29):** 3127.71

**Latitude:** 34°35'03" N  
**Longitude:** 111°52'04" W

**Description:** A copper weld rod. From the intersection of Pecan Lane and Apache Trail, go west to Buffalo Trail, then south on Buffalo Trail to Mahan. Station is located south of Buffalo Trail on the turn out of Mahan 50 feet south of the centerline of Buffalo Trail.

2205

**NATIONAL FLOOD INSURANCE PROGRAM**

**FIRM**

**FLOOD INSURANCE RATE MAP**

**YAVAPAI COUNTY,  
ARIZONA AND  
INCORPORATED AREAS**

**PANEL 2205 OF 3925**

(SEE MAP INDEX FOR PANELS NOT PRINTED)

CONTAINS:

COMMUNITY

NUMBER

PANEL

SUFFIX

CAMP VERDE TOWN OF  
YAVAPAI COUNTY  
UNINCORPORATED AREAS

04033

2205

F

040093

2205

F

434105

**MAP NUMBER  
04025C2205 F**

**EFFECTIVE DATE:  
JUNE 6, 2001**

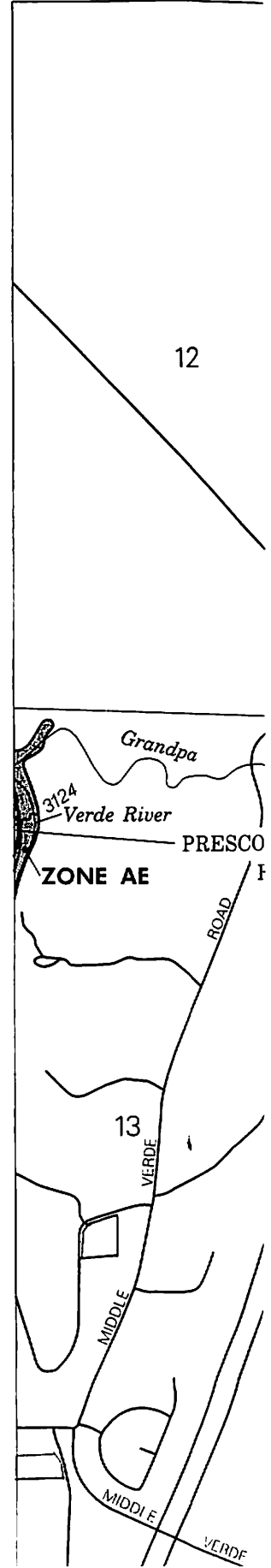


Federal Emergency Management Agency

111°52'30"  
34°37'30"

**ELEVATION REFERENCE MARKS**  
**REFERENCE ELEVATION MARK (FEET NGVD) DESCRIPTION OF LOCATION**

RM102	3333.50	Aerial Mapping Company PK nail with brass washer in rock, approximately 30 feet southeast of centerline of dirt road, approximately 75 feet south of north boundary fence of Montezuma's Castle National Monument, approximately 1,900 feet north and approximately 2,100 feet west of approximate southeast corner of Section 8, T14N, R5E.
RM103	3241.71	Aerial Mapping Company 1/2-inch rebar with aluminum cap stamped WBC-BM 100 at southeast fence corner in northwest quadrant of T intersection of dirt roads, approximately 600 feet east of the west corner of Section 9, T14N, R5E.
RM112	3094.98	Arizona Highway Department brass cap in north end of west highway on Camp Verde road to Middle Verde, brass cap stamped Elevation 3095.64, approximately 1,400 feet north and approximately 700 feet west of approximate southeast corner of Section 30, T14N, R5E.
RM113	3136.04	Aerial Mapping Company 1/2-inch rebar with aluminum cap along dirt road, approximately 150 feet west of house, approximately 400 feet south and approximately 1,100 feet east of approximate northwest corner of Section 30, T14N R4E.
RM118	3083.74	Aerial Mapping Company 1/2-inch rebar with aluminum cap stamped VR-BM 111, in the middle of the intersection of Cliff House Drive and Soldier Drive, approximately 1,630 feet east and approximately 100 feet south of the northwest corner of Section 32, T14N, R5E.
RM119	3105.89	From the intersection in Camp Verde of North Road, 1-17 and Pecan Lane (the road to Montezuma's Castle) go north on Pecan Lane 700 feet to Wood's Ditch. Station is located on the west headwall of the bridge over Wood's Ditch. Station is a cotton-picker spindle set in the west headwall of the bridge.
RM121	3094.98	From the intersection in Camp Verde of North Road, Interstate 17 and Pecan Lane (the road to Montezuma's Castle) go north on Pecan Lane to the bridge over the Verde River. Station is located on the parapet wall at the southeast corner of the bridge. Station is a brass cap.
RM122	3127.71	From the intersection of Pecan Lane and Apache Trail, go west to Buffalo Trail, then south on Buffalo Trail to Mahan. Station is located south of Buffalo Trail on the turn out of Mahan 50 feet south of the centerline of Buffalo Trail. Station is a copper weld rod.
RM135	3319.61	Aerial Mapping Company 1/2-inch rebar with aluminum cap approximately 150 feet north of ford on Wet Beaver Creek, approximately 1,500 feet south and approximately 900 feet east of approximately northwest corner of Section 10, T14N, R5E.



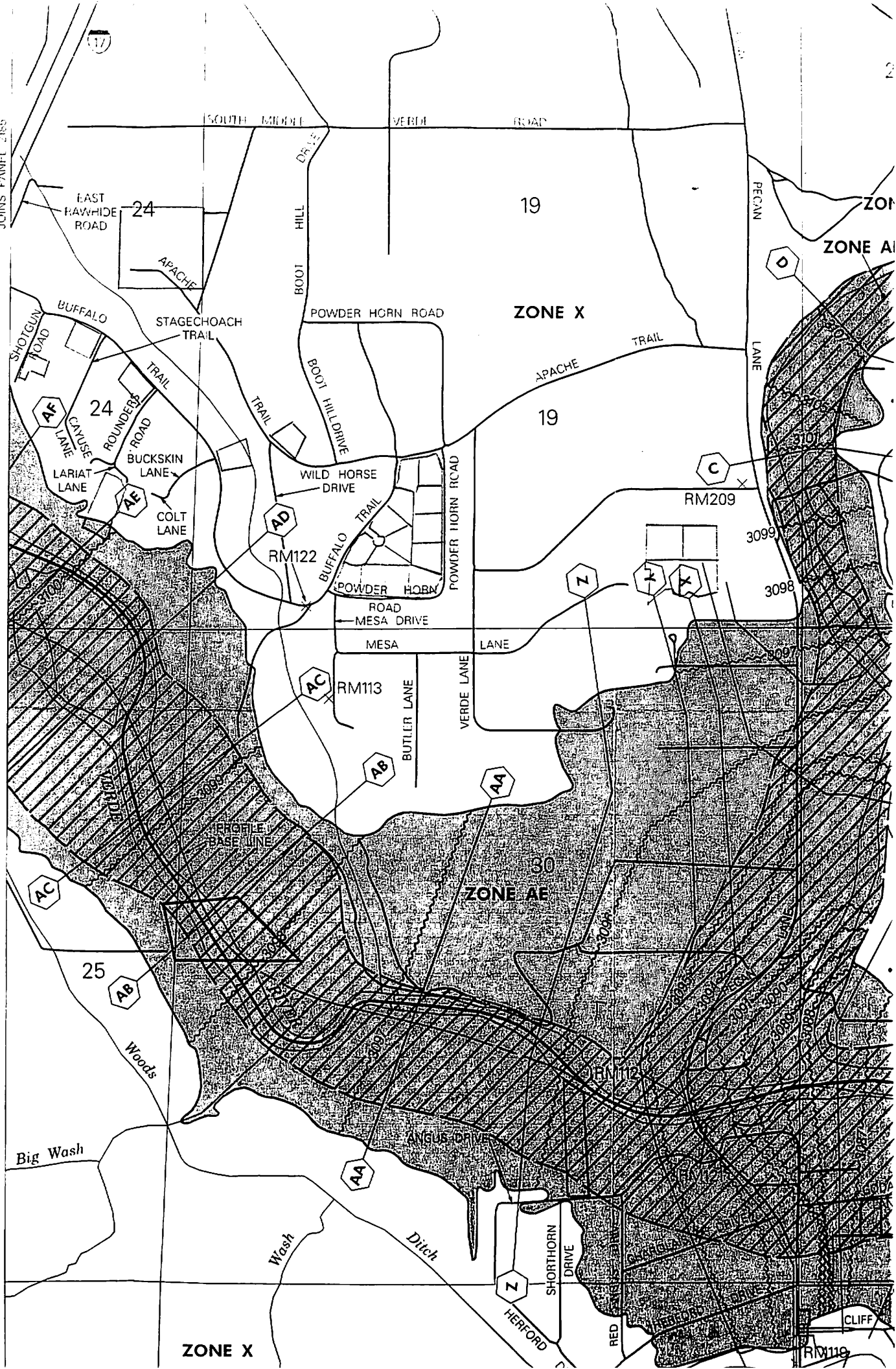
1

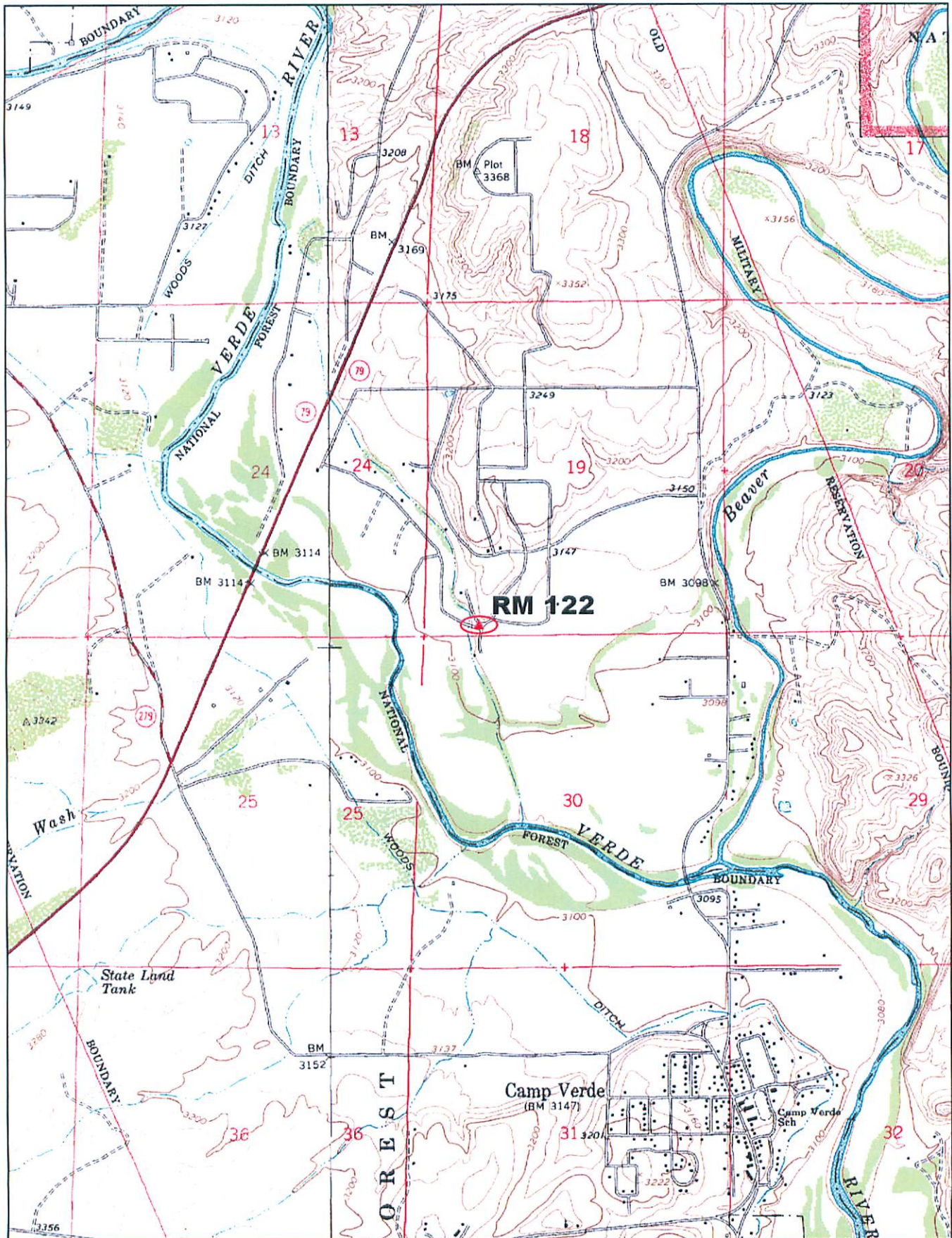
2

3

lect  
road,  
n end  
ct of  
ner of

JOINS PANEL 2185





© 2002 DeLorme, 3-D TopoQuads®, Data copyright of content owner.  
www.delorme.com

Scale 1 : 25,000  
1" = 2080 ft

