

ELEVATION REFERENCE MONUMENT

ERM: 165A

Panel: 2515

Elevation (NAVD88): 4256.85

Elevation (NGVD29): 4254.32

Latitude: 34°23'08" N

Longitude: 112°13'03" W

Description: 2" diameter Yavapai County Flood Control District aluminum capped rebar in concrete. To get to station from I-17 and Highway 69, go northwesterly on Highway 69 for approximately 6.8 miles to Main Street. Make a U-turn on Main Street and head south on Highway 69 for 0.2 miles. Station is located approximately 24.3 feet southwesterly of west edge of pavement on Highway 69 and is 2' west of an angle iron marked "3606+70".

MONUMENT RECORD FORM

CORNER LOCATION INFORMATION

SECTION 26, CORNER INDEX CODE
TOWNSHIP 12 NORTH, RANGE 1 EAST
6 SRB MERIDIAN YAVAPAI COUNTY

CORNER TYPE:

ALIQUOT GOV'T COR. NON-ALIQUOT GOV'T COR. OTHER

FORMAL CORNER NAME: RM 165A

COUNTY FILING INFORMATION

APPLY COUNTY STICKER HERE IF APPLICABLE

FEE #
DOCKET PAGE
COUNTY, ARIZONA

DATE HOUR

FEE: PAGES

REQUEST OF:

TITLE:

SUBMITTED TO BE CHECKED FOR COMPLETENESS

FILED AT REQUEST OF COUNTY REVIEWER

TITLE:

SIGNED: DATE:

NOTES FOR USING TOWNSHIP INDEX TO DETERMINE INDEX CODE
FOR ALIQUOT SECTION, QUARTER, AND SIXTEENTH CORNERS, PUT A CIRCLE AT THE CORNER LOCATION...

TOWNSHIP INDEX

SCALE: 1" = 10,000

Grid table with columns 1-27 and rows A-Z. Contains numerical data points for township index.

MONUMENT FIELD VISIT INFORMATION

DATE OF FIELD VISIT: 12/07/2003

MONUMENT:

LEFT AS FOUND FOUND & TAGGED FOUND & REBUILT
RESTORED LOST CORNER ESTABLISHED NEW ACCESSORIES

PLANE COORDINATES: ESTABLISHED TO ORDER

ZONE: WEST CENTRAL EAST NOT ESTABLISHED

DATA: N.A.D. 1927 (FEET) N.A.V.D. 1929 (FEET)

Y= X= EL.=

N.A.D. 1983 (METERS) N.A.V.D. 1988 (METERS)

N= E= EL.=

LAT. NORTH, LONG. WEST

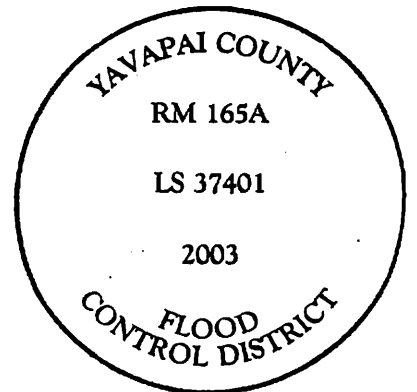
GEOID HEIGHT SCALE FACTOR

CONTROL STATIONS USED: RM 78A (ESTABLISHED)

FOR YCFCD IN JULY, 1997

DESCRIBE RECORD EVIDENCE FOUND, INCLUDING TIES AND ACCESSORIES, OR IF A MONUMENT NOT OF RECORD, TELL WHY YOU ACCEPTED IT AS VALID...

CORNER MONUMENT CAP STAMPING



RM 165A

(PANEL 2515)

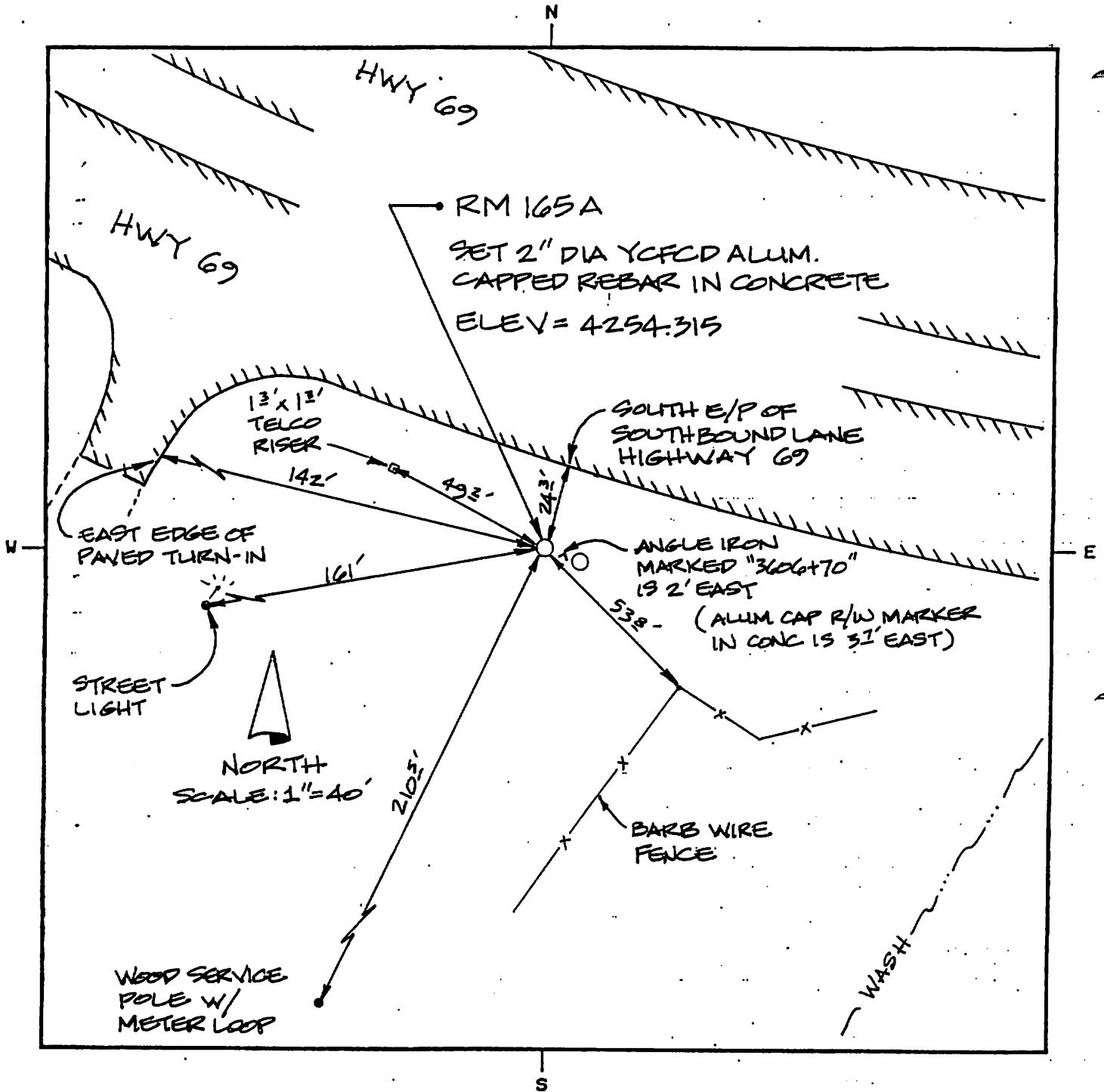
SET TO REPLACE RM 165 & RM 77A (NOT FOUND)

SET 2" DIA. Y.C.F.C.D. ALUM. CAPPED REBAR IN CONCRETE

ELEV = 4254.315

FILED RECORD OF SURVEY IN COUNTY RECORDS AT BOOK PAGE(S)
ATTACHED SHEETS: WRITTEN TESTIMONY FIELD NOTE PAGE(S) OTHER

2515



LAND SURVEYOR IDENTIFICATION AND CERTIFICATION

I, JODY A. STONE, ARIZONA R.L.S. NUMBER 37401, HEREBY CERTIFY THAT THIS CORNER RECORD WAS PREPARED UNDER MY DIRECTION, THAT ALL MONUMENTATION ACTUALLY EXISTS AS SHOWN HEREON.

COMPANY NAME JDS ASSOCIATES LLC
 STREET ADDRESS _____
 MAILING ADDRESS PO BOX 3240
 CITY, STATE, ZIP CAMP VERDE AZ 86322
 TELEPHONE NUMBER 928-267-8943

