

ELEVATION REFERENCE MONUMENT

ERM: 167

Panel: 2915

Elevation (NAVD88): 3626.62

Elevation (NGVD29): 3624.40

Latitude: 34°17'53" N

Longitude: 112°05'45" W

Description: Aerial Mapping Company 1/2-inch rebar with aluminum cap, approximately 32 feet south of centerline of Fremont Drive, approximately 700 feet north and approximately 400 feet west of approximate southeast corner of Section 25, T11N, R2E.

Cordis

2915

NATIONAL FLOOD INSURANCE PROGRAM

FIRM  **ORIGINAL**
FLOOD INSURANCE RATE MAP

YAVAPAI COUNTY,
ARIZONA AND
INCORPORATED AREAS

PANEL 2915 OF 3925

(SEE MAP INDEX FOR PANELS NOT PRINTED)

CONTAINS
COMMUNITY

NUMBER PANEL SUFFIX

YAVAPAI COUNTY
UNINCORPORATED AREAS

040293

2915

F

MAP NUMBER
04025C2915 F

EFFECTIVE DATE:
JUNE 6, 2001



Federal Emergency Management Agency

16/11 2/3 E A

B

ELEVATION REFERENCE MARKS

REFERENCE MARK	ELEVATION (FEET NGVD)	DESCRIPTION OF LOCATION
----------------	-----------------------	-------------------------

RM167	3624.40	Aerial Mapping Company 1/2-inch rebar with aluminum cap, approximately 32 feet south of centerline of Fremont Drive, approximately 700 feet north and approximately 400 feet west of approximate southeast corner of Section 25, T11N, R2E.
RM168	3683.76	Aerial Mapping Company 1/2-inch rebar with aluminum cap, approximately 35 feet west of centerline Fremont Drive, approximately 45 feet north of wire fence, approximately 55 feet north-northwest of stock guard, approximately 1,250 feet south and approximately 950 feet west of approximate northeast corner of Section 26, T11N, R2E.

112°07'30"
34°18'45"

17
79

ZONE

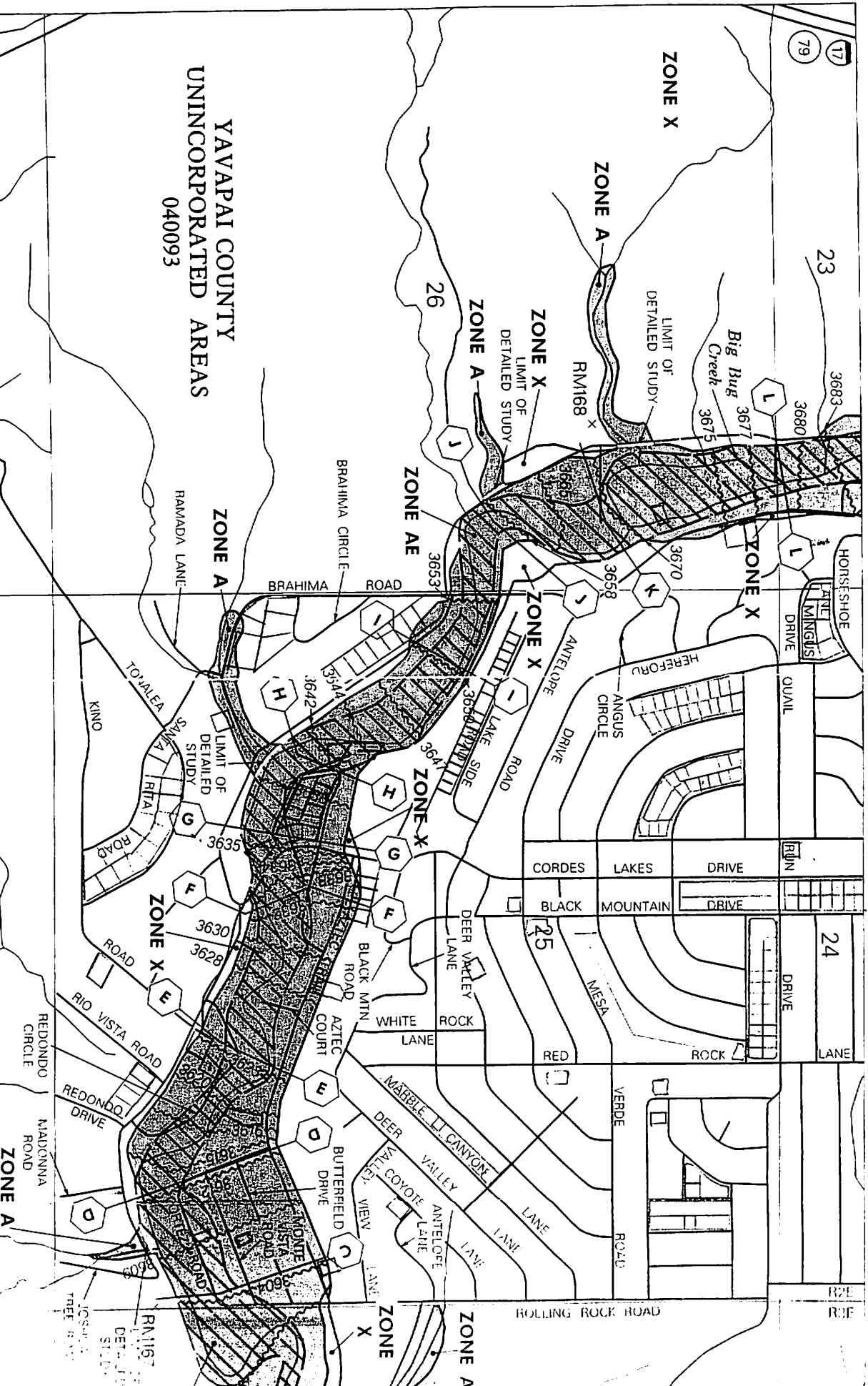
UNIN

1

2

17

112°07'30"
34°18'45"



YAVAPAI COUNTY
UNINCORPORATED AREAS
040093

* See Cordes Lakes

SEE CORDES LAKES A

YAVAPAI COUNTY FLOOD CONTROL DISTRICT

MONUMENT RECORD FORM

CORNER LOCATION INFORMATION

SECTION 25 CORNER INDEX CODE _____
 TOWNSHIP 11 NORTH, RANGE 2 EAST
043R MERIDIAN YAVAPAI COUNTY

CORNER TYPE:
 ALIQUOT GOV'T COR. NON-ALIQUOT GOV'T COR. OTHER
 FORMAL CORNER NAME: RM 167

NOTES FOR USING TOWNSHIP INDEX TO DETERMINE INDEX CODE

FOR ALIQUOT SECTION, QUARTER, AND SIXTEENTH CORNERS, PUT A CIRCLE AT THE CORNER LOCATION, THEN READ GRID DESIGNATION (A-1 THRU Z-25). A CORNER THAT APPLIES TO TWO OR MORE TOWNSHIPS SHOULD BE INDEXED UNDER THE TOWNSHIP NORTH OR WEST OF THE CORNER LOCATION AS INDICATED BY THE HEAVY LINE ON THE INDEX (GENERALLY THE SOUTH AND EAST LINES EXCEPT THE N.E. AND S.W. CORNERS). CLOSING CORNERS WILL BE INDEXED UNDER THE TOWNSHIP TO WHICH THEY APPLY. FOR 1/64 CORNERS AND FURTHER DIVISIONS, AND FOR NON-ALIQUOT CORNERS LYING BETWEEN GRID DESIGNATIONS OR WITHIN A GRID SQUARE ON THE INDEX, DRAW AN APPROPRIATE REFERENCE LINE OR SHAPE ON THE INDEX, THEN CIRCLE THE CORNER LOCATION AND SPECIFY THE NEAREST INDEX CODE TO THE NORTH OR WEST (IF ON A GRID LINE), OR AT THE NORTHWEST CORNER OF THE GRID BLOCK.

MONUMENT FIELD VISIT INFORMATION

DATE OF FIELD VISIT: OCT 9, 2001

MONUMENT:
 LEFT AS FOUND FOUND & TAGGED FOUND & REBUILT
 RESTORED LOST CORNER ESTABLISHED NEW ACCESSORIES

STATE PLANE COORDINATES: ESTABLISHED TO _____ ORDER
 NE: WEST CENTRAL EAST NOT ESTABLISHED
 STA: N.A.D. 1927 (FEET) N.A.V.D. 1929 (FEET)

Y = _____ X = _____ EL. = _____
 N.A.D. 1983 (METERS) N.A.V.D. 1988 (METERS)
 N = _____ E = _____ EL. = _____

LAT. _____ NORTH, LONG. _____ WEST
 GEOID HEIGHT _____ SCALE FACTOR _____

CONTROL STATIONS USED: _____

DESCRIBE RECORD EVIDENCE FOUND, INCLUDING TIES AND ACCESSORIES, OR IF A MONUMENT NOT OF RECORD, TELL WHY YOU ACCEPTED IT AS VALID. DESCRIBE ANY ACTIONS TAKEN BY YOU TO REHABILITATE OR PERPETUATE THIS MONUMENT IF FOUND IN PERISHABLE OR DETERIORATED CONDITION. IF NO EVIDENCE OF THE ORIGINAL MONUMENT OR ITS LOCATION CAN BE FOUND, DESCRIBE THE PROCEDURE FOLLOWED IN THE RESTORATION OF THE MONUMENT AND THE CONTROLLING CORNERS USED, INCLUDING ALL RECORD OF SURVEY REFERENCES. DESCRIBE ANY NEW MONUMENT SET (INCLUDING ACCESSORY MONUMENTS) AS TO MATERIAL, SHAPE, MARKING, PROJECTION OR BURIAL, AND DISPOSITION OF OLD MONUMENT. DESCRIBE NEW TIES AND ACCESSORIES IN COORDINATION WITH THE SKETCH ON THE REVERSE. DESCRIBE ANY CONFLICTING MONUMENTS OR EVIDENCE AND YOUR CONCLUSIONS.

RM 167

FOUND AERIAL MAPPING CO. ALUM. CAPPED REBAR

ELEVATION = 3624.40 PER F.I.R.M. PANEL 2915.

COUNTY FILING INFORMATION

APPLY COUNTY STICKER HERE IF APPLICABLE

FEE # _____
 DOCKET _____ PAGE _____
 _____ COUNTY, ARIZONA
 DATE _____ HOUR _____
 FEE: _____ PAGES _____
 REQUEST OF: _____

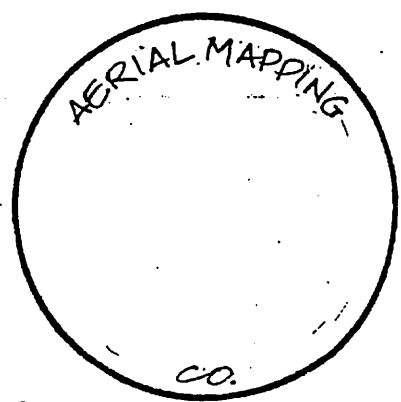
 TITLE: _____
 SUBMITTED TO BE CHECKED FOR COMPLETENESS
 _____ FILED AT REQUEST OF COUNTY REVIEWER

TITLE: _____
 SIGNED: _____ DATE: _____

TOWNSHIP INDEX SCALE: 1" = 10,000'

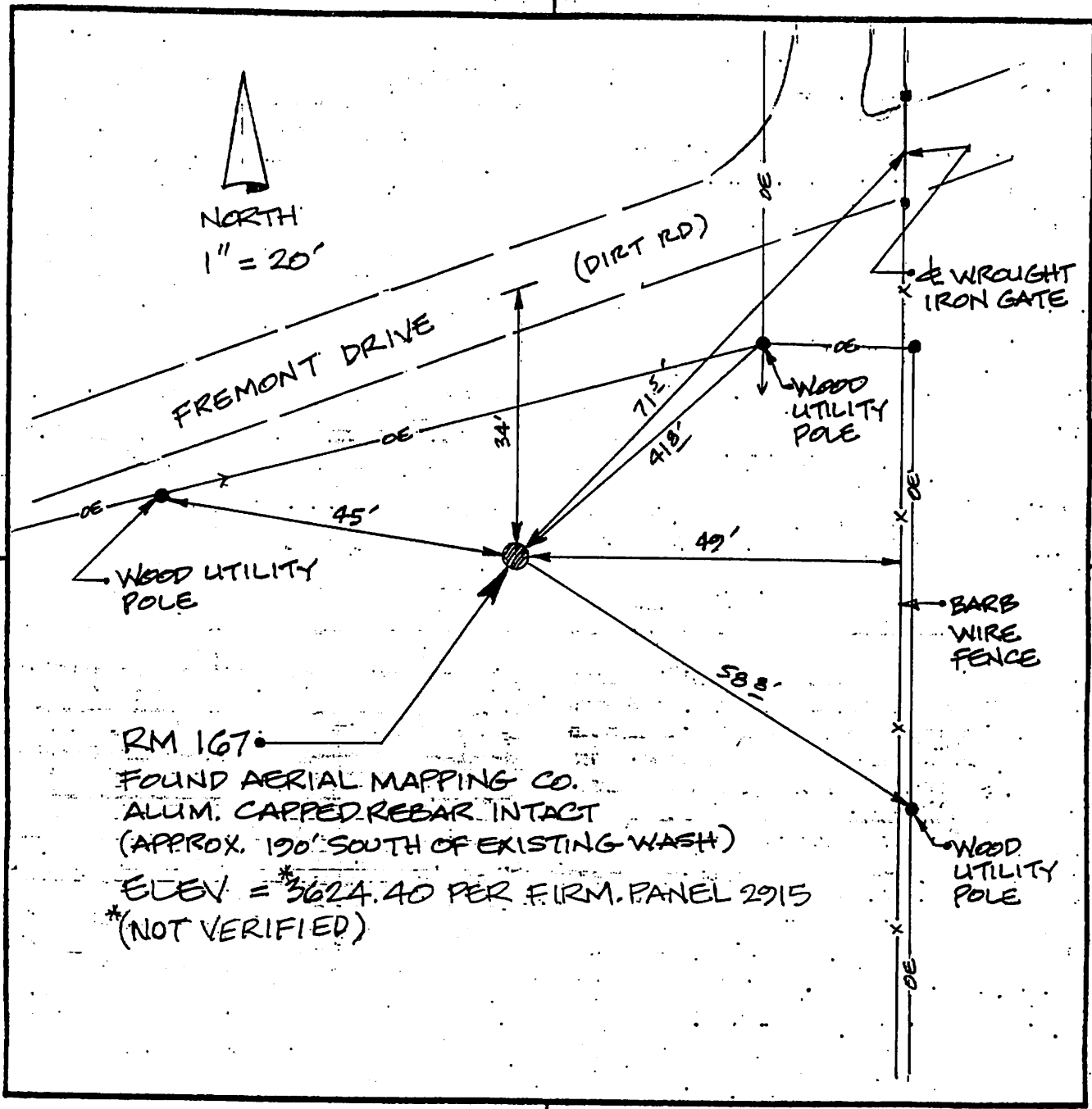
	1	2	3	4	5	6	7	8	9	10	11	12	13	14	15	16	17	18	19	20	21	22	23	24	25
A	+	+	+	+	+	+	+	+	+	+	+	+	+	+	+	+	+	+	+	+	+	+	+	+	+
B	+	+	+	+	+	+	+	+	+	+	+	+	+	+	+	+	+	+	+	+	+	+	+	+	+
C	+	+	+	+	+	+	+	+	+	+	+	+	+	+	+	+	+	+	+	+	+	+	+	+	+
D	+	+	+	+	+	+	+	+	+	+	+	+	+	+	+	+	+	+	+	+	+	+	+	+	+
E	+	+	+	+	+	+	+	+	+	+	+	+	+	+	+	+	+	+	+	+	+	+	+	+	+
F	+	+	+	+	+	+	+	+	+	+	+	+	+	+	+	+	+	+	+	+	+	+	+	+	+
G	+	+	+	+	+	+	+	+	+	+	+	+	+	+	+	+	+	+	+	+	+	+	+	+	+
H	+	+	+	+	+	+	+	+	+	+	+	+	+	+	+	+	+	+	+	+	+	+	+	+	+
I	+	+	+	+	+	+	+	+	+	+	+	+	+	+	+	+	+	+	+	+	+	+	+	+	+
J	+	+	+	+	+	+	+	+	+	+	+	+	+	+	+	+	+	+	+	+	+	+	+	+	+
K	+	+	+	+	+	+	+	+	+	+	+	+	+	+	+	+	+	+	+	+	+	+	+	+	+
L	+	+	+	+	+	+	+	+	+	+	+	+	+	+	+	+	+	+	+	+	+	+	+	+	+
M	+	+	+	+	+	+	+	+	+	+	+	+	+	+	+	+	+	+	+	+	+	+	+	+	+
N	+	+	+	+	+	+	+	+	+	+	+	+	+	+	+	+	+	+	+	+	+	+	+	+	+
O	+	+	+	+	+	+	+	+	+	+	+	+	+	+	+	+	+	+	+	+	+	+	+	+	+
P	+	+	+	+	+	+	+	+	+	+	+	+	+	+	+	+	+	+	+	+	+	+	+	+	+
Q	+	+	+	+	+	+	+	+	+	+	+	+	+	+	+	+	+	+	+	+	+	+	+	+	+
R	+	+	+	+	+	+	+	+	+	+	+	+	+	+	+	+	+	+	+	+	+	+	+	+	+
S	+	+	+	+	+	+	+	+	+	+	+	+	+	+	+	+	+	+	+	+	+	+	+	+	+
T	+	+	+	+	+	+	+	+	+	+	+	+	+	+	+	+	+	+	+	+	+	+	+	+	+
U	+	+	+	+	+	+	+	+	+	+	+	+	+	+	+	+	+	+	+	+	+	+	+	+	+
V	+	+	+	+	+	+	+	+	+	+	+	+	+	+	+	+	+	+	+	+	+	+	+	+	+
W	+	+	+	+	+	+	+	+	+	+	+	+	+	+	+	+	+	+	+	+	+	+	+	+	+
X	+	+	+	+	+	+	+	+	+	+	+	+	+	+	+	+	+	+	+	+	+	+	+	+	+
Y	+	+	+	+	+	+	+	+	+	+	+	+	+	+	+	+	+	+	+	+	+	+	+	+	+
Z	+	+	+	+	+	+	+	+	+	+	+	+	+	+	+	+	+	+	+	+	+	+	+	+	+

CORNER MONUMENT CAP STAMPING



FILED RECORD OF SURVEY IN COUNTY RECORDS AT _____ BOOK _____, PAGE(S) _____
 ATTACHED SHEETS: WRITTEN TESTIMONY FIELD NOTE PAGE(S) OTHER _____

N

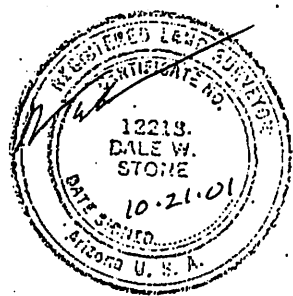


RM 167
 FOUND AERIAL MAPPING CO.
 ALUM. CAPPED REBAR INTACT
 (APPROX. 190' SOUTH OF EXISTING WASH)
 ELEV. = *5624.40 PER FIRM. PANEL 2915
 *(NOT VERIFIED)

LAND SURVEYOR IDENTIFICATION AND CERTIFICATION

I, DALE W. STONE, ARIZONA R.L.S. NUMBER 12218, HEREBY CERTIFY THAT THIS CORNER RECORD WAS PREPARED UNDER MY DIRECTION, THAT ALL MONUMENTATION ACTUALLY EXISTS AS SHOWN HEREON.

COMPANY NAME JDS ASSOCIATES, LLC
 STREET ADDRESS _____
 MAILING ADDRESS PO BOX 3240
 CITY, STATE, ZIP CAMP VERDE AZ 86322
 TELEPHONE NUMBER 928-567-5344



X _____
 SIGNATURE, SEAL AND DATE