

ELEVATION REFERENCE MONUMENT

ERM: 182A

Panel: 3635

Elevation (NAVD88): 1998.94

Elevation (NGVD29): 1996.92

Latitude: 34°04'22" N

Longitude: 112°08'44" W

Description: 3-1/4" diameter Yavapai County Flood Control District aluminum disk in concrete stamped "RM 68A RM 182A LS 12218 2000". Station is 45 feet south of center line of Saguaro Drive directly below the easterly KV electric line. To get to station from Interstate 17 & Rock Springs/Black Canyon City exit, go west 0.2 miles from exit ramp to Old Black Canyon Highway and make a right, go north 1.3 miles to Palm Lane and make a right. Then take 1st left on Ocotillo Lane and then right on Saguaro Drive and continue for 0.3 miles.

ARIZONA LAND SURVEY CORNER RECORD

MONUMENT FIELD VISIT INFORMATION

INDEX CODE

DATE OF FIELD VISIT OCT 13 2008 MONUMENT ACCEPTED AS MARKING CORNER LOCATION:

- LEFT AS FOUND FOUND & TAGGED FOUND & REBUILT RESTORED LOST CORNER RESTORED OBLITERATED CORNER ESTABLISHED NEW ACCESSORIES

GLO/BLM NOTES REC. & REF.

ARIZONA STATE PLANE COORDINATE SYSTEM: ESTABLISHED TO ORDER, CLASS

ZONE: WEST CENTRAL EAST QUADRANGLE DESIGNATION #

N.A.D. 1927 (FEET) N.A.D. 1983 (METERS) W.G.S. 1984 (METERS)

N.A.V.D. 1929 (FEET) N.A.V.D. 1988 (METERS) GEOID HEIGHT

N. (OR) Y= E. (OR) X= ELEVATION

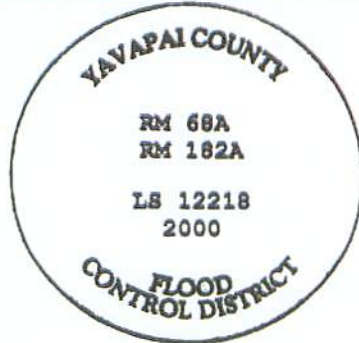
LATITUDE 34° 04' 22.36" LONGITUDE 112° 08' 44.10" GRID FACTOR

CONTROL STATIONS USED:

DESCRIBE ALL EVIDENCE FOUND, INCLUDING TIES AND ACCESSORIES TO COMPLY WITH ARIZONA REVISED STATUTE TITLE 33, SECTION 108: SEE MONUMENT RECORD FORM BY JDS ASSOC LLC DATED NOV 8 2000. THIS FORM IS PREPARED TO SHOW ADDITIONAL STAMPING MADE TO ALUMINUM CAP AND TO INDICATE APPROXIMATE LATITUDE / LONGITUDE OF THE MONUMENT FOR VERTCON SHIFT IN ELEVATION FROM NAVD 29 TO NAVD 88.



CORNER MONUMENT CAP STAMPING



CORNER LOCATION INFORMATION

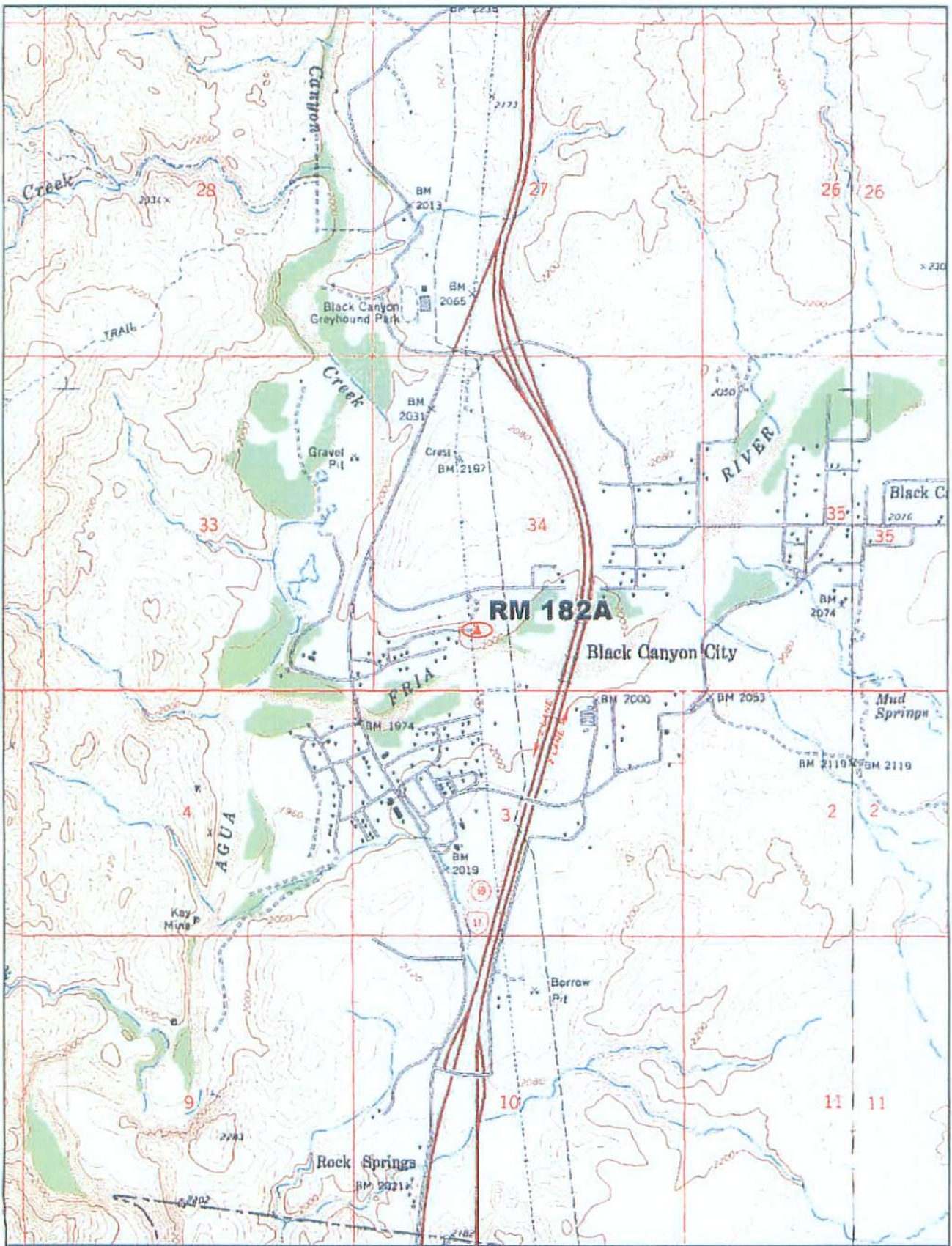
TOWNSHIP 9 NORTH RANGE 2 EAST

SECTION 34 CORNER INDEX CODE 7-14

G.S.R. MERIDIAN YAVAPAI COUNTY

FORMAL CORNER NAME: RM 182A

- ALIQUOT GOV'T COR. NON-ALIQUOT GOV'T COR. OTHER



DeLORME

© 2002 DeLorme, 3-D TopoQuads™. Data copyright of content owner.
www.delorme.com

Scale 1 : 25,000
 1" = 2080 ft



True
 Magnetic
 12.7° E

YAVAPAI COUNTY FLOOD CONTROL DISTRICT

MONUMENT RECORD FORM

CORNER LOCATION INFORMATION

SECTION 34 CORNER INDEX CODE _____
 TOWNSHIP 2 NORTH, RANGE 2 EAST
GSR MERIDIAN YAVAPAI COUNTY
 CORNER TYPE:
 ALIQUOT GOV'T COR. NON-ALIQUOT GOV'T COR. OTHER
 FORMAL CORNER NAME: RM 68A

NOTES FOR USING TOWNSHIP INDEX TO DETERMINE INDEX CODE

FOR ALIQUOT SECTION, QUARTER, AND SIXTEENTH CORNERS, PUT A CIRCLE AT THE CORNER LOCATION, THEN READ GRID DESIGNATION (A-1 THRU Z-25). A CORNER THAT APPLIES TO TWO OR MORE TOWNSHIPS SHOULD BE INDEXED UNDER THE TOWNSHIP NORTH OR WEST OF THE CORNER LOCATION AS INDICATED BY THE HEAVY LINE ON THE INDEX (GENERALLY THE SOUTH AND EAST LINES EXCEPT THE N.E. AND S.W. CORNERS). CROSSING CORNERS WILL BE INDEXED UNDER THE TOWNSHIP TO WHICH THEY APPLY. FOR 1/64 CORNERS AND FURTHER DIVISIONS, AND FOR NON-ALIQUOT CORNERS LYING BETWEEN GRID DESIGNATIONS OR WITHIN A GRID SQUARE ON THE INDEX, DRAW AN APPROPRIATE REFERENCE LINE OR SHAPE ON THE INDEX, THEN CIRCLE THE CORNER LOCATION AND SPECIFY THE NEAREST INDEX CODE TO THE NORTH OR WEST (IF ON A GRID LINE), OR AT THE NORTHWEST CORNER OF THE GRID BLOCK.

MONUMENT FIELD VISIT INFORMATION

DATE OF FIELD VISIT: Nov 5 2000
 MONUMENT:
 LEFT AS FOUND FOUND & TAGGED FOUND & REBUILT
 RESTORED LOST CORNER ESTABLISHED NEW ACCESSORIES
 STATE PLANE COORDINATES: ESTABLISHED TO _____ ORDER
 ZONE: WEST CENTRAL EAST NOT ESTABLISHED
 DATA: N.A.D. 1927 (FEET) N.A.V.D. 1929 (FEET)
 Y=_____ X=_____ EL.=_____
 N.A.D. 1983 (METERS) N.A.V.D. 1988 (METERS)
 N=_____ E=_____ EL.=_____
 LAT. _____ NORTH, LONG. _____ WEST
 GEOID HEIGHT _____ SCALE FACTOR _____
 CONTROL STATIONS USED: RM 71 PER FIRM
PANEL 1235

DESCRIBE RECORD EVIDENCE FOUND, INCLUDING TIES AND ACCESSORIES, OR IF A MONUMENT NOT OF RECORD, TELL WHY YOU ACCEPTED IT AS VALID. DESCRIBE ANY ACTIONS TAKEN BY YOU TO REHABILITATE OR PERPETUATE THIS MONUMENT IF FOUND IN PERISHABLE OR DETERIORATED CONDITION. IF NO EVIDENCE OF THE ORIGINAL MONUMENT OR ITS LOCATION CAN BE FOUND, DESCRIBE THE PROCEDURE FOLLOWED IN THE RESTORATION OF THE MONUMENT AND THE CONTROLLING CORNERS USED, INCLUDING ALL RECORD OF SURVEY REFERENCES. DESCRIBE ANY NEW MONUMENT SET (INCLUDING ACCESSORY MONUMENTS) AS TO MATERIAL, SHAPE, MARKING, PROJECTION OR BURIAL, AND DISPOSITION OF OLD MONUMENT. DESCRIBE NEW TIES AND ACCESSORIES IN COORDINATION WITH THE SKETCH ON THE REVERSE. DESCRIBE ANY CONFLICTING MONUMENTS OR EVIDENCE AND YOUR CONCLUSIONS.

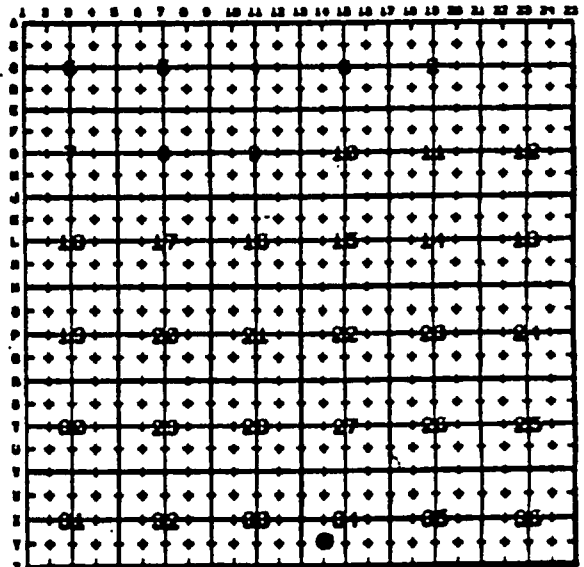
RM 68A
(SET TO REPLACE RM 68 - OBLITERATED BY NEW
HOME CONSTRUCTION)
SET 3/4" DIA. TCFCD ALUM DISK IN CONCRETE
(SEE SKETCH ON REVERSE SIDE)
ELEVATION = 1996.915

COUNTY FILING INFORMATION

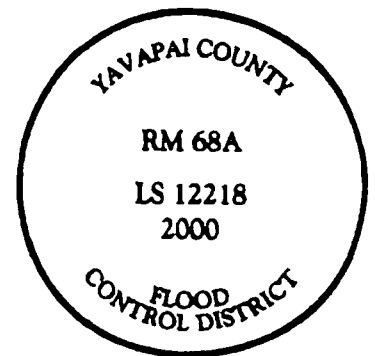
APPLY COUNTY STICKER HERE IF APPLICABLE
 FEE \$ _____
 DOCKET _____ PAGE _____
 _____ COUNTY, ARIZONA
 DATE _____ HOUR _____
 FEE: _____ PAGES _____
 REQUEST OF: _____
 TITLE: _____
 SUBMITTED TO BE CHECKED FOR COMPLETENESS
 FILED AT REQUEST OF COUNTY REVIEWER
 TITLE: _____
 SIGNED: _____ DATE: _____

TOWNSHIP INDEX

SCALE: 1" = 10.000'



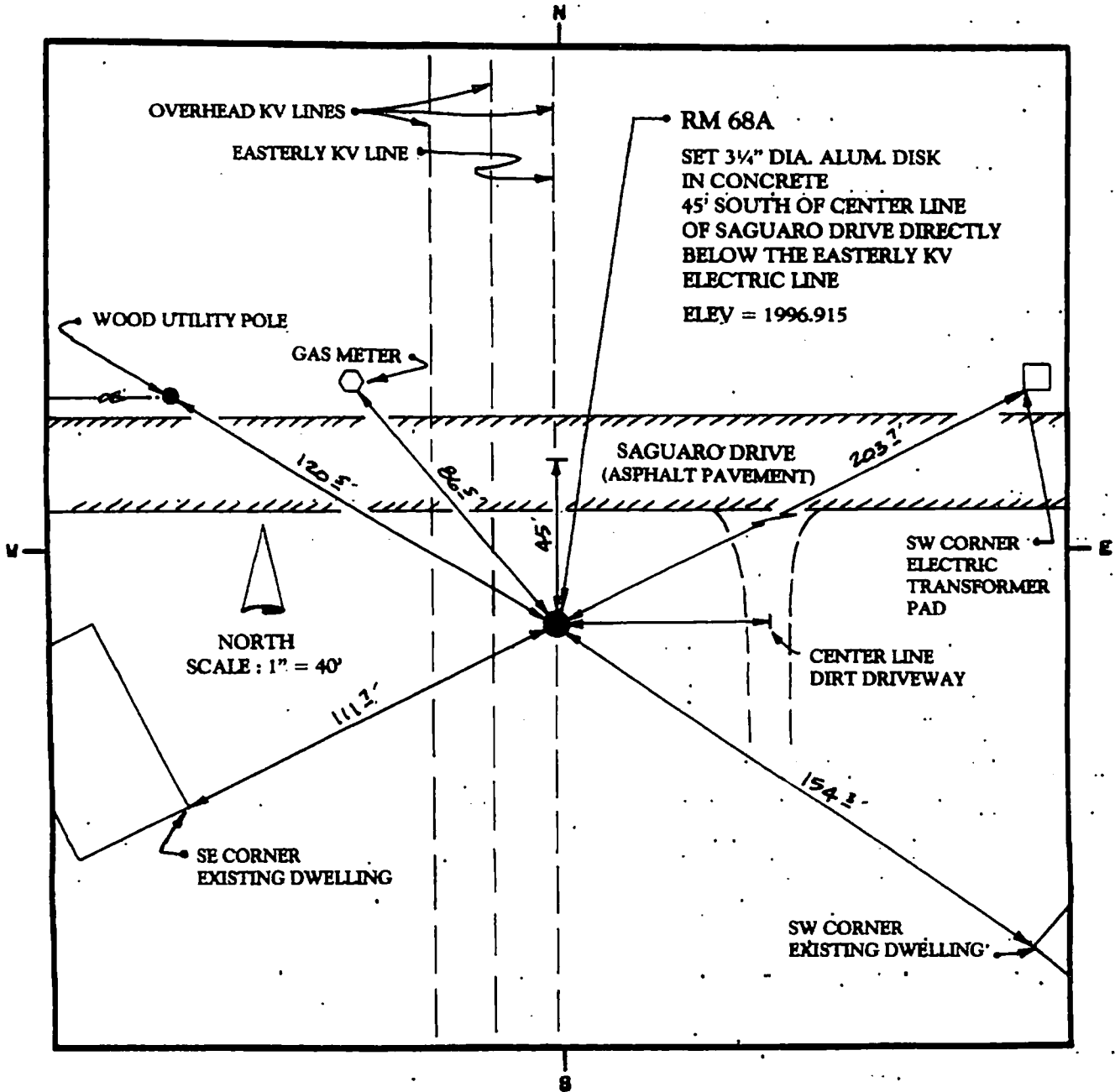
CORNER MONUMENT CAP STAMPING



FILED RECORD OF SURVEY IN COUNTY RECORDS AT _____ BOOK _____ PAGE(S) _____
 ATTACHED SHEETS: WRITTEN TESTIMONY FIELD NOTE PAGE(S) OTHER _____

SKETCH OF CORNER TIES AND ACCESSORIES

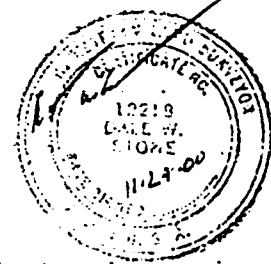
SCALE: 1" = 40'



LAND SURVEYOR IDENTIFICATION AND CERTIFICATION

I, DALE W. STONE, ARIZONA R.L.S. NUMBER 12219, HEREBY CERTIFY THAT THIS CORNER RECORD WAS PREPARED UNDER MY DIRECTION, THAT ALL MONUMENTATION ACTUALLY EXISTS AS SHOWN HEREON.

COMPANY NAME JDS ASSOCIATES, LLC
 STREET ADDRESS _____
 MAILING ADDRESS PO BOX 3240
 CITY, STATE, ZIP CAMP VERDE, AZ 86322
 TELEPHONE NUMBER (920) 567-8543



SIGNATURE, SEAL AND DATE

