

ELEVATION REFERENCE MONUMENT

ERM: 184

Panel: 3655

Elevation (NAVD88): 1270.12

Elevation (NGVD29): 2068.18

2070.23

VFYD BY ACE PATEL

Latitude: 34°05'09" N

Longitude: 112°07'20" W

Description: Aerial Mapping Company iron bar with aluminum cap flush with natural ground stamped "BCC 801 LS 7146". To get to station from Interstate 17 & Coldwater Canyon Road, travel southeasterly on Coldwater Canyon Road for 0.6 miles, turn left at Coldwater Canyon Road for 0.2 miles, turn left at Coldwater Canyon Road 0.1 miles, turn right at Canyon Road 0.1 miles and continue onto Coldwater Canyon Road for 0.7 miles, then continue onto Perry Buchanan Road 0.1 miles. Station is on the south side of the approximately 49 feet from centerline of road and approximately 21 feet north of barb wire fence. Station is approximately 190' southeasterly from a wood utility pole on the north side of road. Station is approximately 133' southwesterly from a wood utility pole on the north side of road.

YAVAPAI COUNTY FLOOD CONTROL DISTRICT

MONUMENT RECORD FORM

CORNER LOCATION INFORMATION

SECTION 26, CORNER INDEX CODE -----
 TOWNSHIP 9 NORTH, RANGE 2 EAST
G & SRB MERIDIAN YAVAPAI COUNTY

CORNER TYPE:

ALIQUOT GOV'T COR. NON-ALIQUOT GOV'T COR. OTHER

FORMAL CORNER NAME: RM 184

NOTES FOR USING TOWNSHIP INDEX TO DETERMINE INDEX CODE
 FOR ALIQUOT SECTION, QUARTER, AND SIXTEENTH CORNERS, PUT A CIRCLE AT THE CORNER LOCATION, THEN READ GRID DESIGNATION (A-1 THRU Z-25). A CORNER THAT APPLIES TO TWO OR MORE TOWNSHIPS SHOULD BE INDEXED UNDER THE TOWNSHIP NORTH OR WEST OF THE CORNER LOCATION AS INDICATED BY THE HEAVY LINE ON THE INDEX (GENERALLY THE SOUTH AND EAST LINES EXCEPT THE N.E. AND S.W. CORNERS). CLOSING CORNERS WILL BE INDEXED UNDER THE TOWNSHIP TO WHICH THEY APPLY. FOR 1/64 CORNERS AND FURTHER DIVISIONS, AND FOR NON-ALIQUOT CORNERS LYING BETWEEN GRID DESIGNATIONS OR WITHIN A GRID SQUARE ON THE INDEX, DRAW AN APPROPRIATE REFERENCE LINE OR SHAPE ON THE INDEX, THEN CIRCLE THE CORNER LOCATION AND SPECIFY THE NEAREST INDEX CODE TO THE NORTH OR WEST (IF ON A GRID LINE), OR AT THE NORTHWEST CORNER OF THE GRID BLOCK.

MONUMENT FIELD VISIT INFORMATION

DATE OF FIELD VISIT: 8-18-2006

MONUMENT:

LEFT AS FOUND FOUND & TAGGED FOUND & REBUILT

RESTORED LOST CORNER ESTABLISHED NEW ACCESSORIES

STATE PLANE COORDINATES: ESTABLISHED TO _____ ORDER

ZONE: WEST CENTRAL EAST NOT ESTABLISHED

DATA: N.A.D. 1927 (FEET) N.A.V.D. 1929 (FEET)

Y = _____ X = _____ EL. = _____

N.A.D. 1983 (METERS) N.A.V.D. 1988 (METERS)

N = _____ E = _____ EL. = _____

LAT. 34° 05' 09" NORTH, LONG. 112° 07' 20" WEST

GEOID HEIGHT _____ SCALE FACTOR _____

CONTROL STATIONS USED: RM 183 PER FIRM
PANEL 3635 F

DESCRIBE RECORD EVIDENCE FOUND, INCLUDING TIES AND ACCESSORIES, OR IF A MONUMENT NOT OF RECORD, TELL WHY YOU ACCEPTED IT AS VALID. DESCRIBE ANY ACTIONS TAKEN BY YOU TO REHABILITATE OR PERPETUATE THIS MONUMENT IF FOUND IN PERISHABLE OR DETERIORATED CONDITION. IF NO EVIDENCE OF THE ORIGINAL MONUMENT OR ITS LOCATION CAN BE FOUND, DESCRIBE THE PROCEDURE FOLLOWED IN THE RESTORATION OF THE MONUMENT AND THE CONTROLLING CORNERS USED, INCLUDING ALL RECORD OF SURVEY REFERENCES. DESCRIBE ANY NEW MONUMENT SET (INCLUDING ACCESSORY MONUMENTS) AS TO MATERIAL, SHAPE, MARKING, PROJECTION OR BURIAL, AND DISPOSITION OF OLD MONUMENT. DESCRIBE NEW TIES AND ACCESSORIES IN COORDINATION WITH THE SKETCH ON THE REVERSE. DESCRIBE ANY CONFLICTING MONUMENTS OR EVIDENCE AND YOUR CONCLUSIONS.

RM 184

FOUND AERIAL MAPPING COMPANY
ALUMINUM CAPPED IRON BAR INTACT.

ESTABLISHED NEW TIES.

ELEVATION = 2068.18

COUNTY FILING INFORMATION

APPLY COUNTY STICKER HERE IF APPLICABLE

FEE \$ _____

DOCKET _____ PAGE _____

_____ COUNTY, ARIZONA

DATE _____ HOUR _____

FEE: _____ PAGES _____

REQUEST OF: _____

TITLE: _____

SUBMITTED TO BE CHECKED FOR COMPLETENESS

FILED AT REQUEST OF COUNTY REVIEWER _____

TITLE: _____

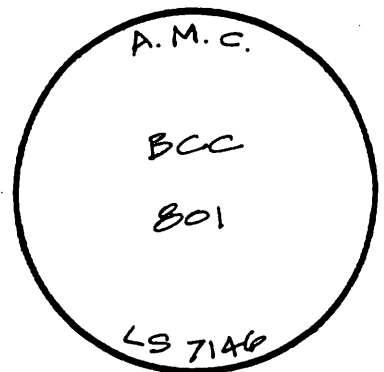
SIGNED: _____ DATE: _____

TOWNSHIP INDEX

SCALE: 1" = 10.000'

	1	2	3	4	5	6	7	8	9	10	11	12	13	14	15	16	17	18	19	20	21	22	23	24	25
A	*	*	*	*	*	*	*	*	*	*	*	*	*	*	*	*	*	*	*	*	*	*	*	*	*
B	*	*	*	*	*	*	*	*	*	*	*	*	*	*	*	*	*	*	*	*	*	*	*	*	*
C	*	*	*	*	*	*	*	*	*	*	*	*	*	*	*	*	*	*	*	*	*	*	*	*	*
D	*	*	*	*	*	*	*	*	*	*	*	*	*	*	*	*	*	*	*	*	*	*	*	*	*
E	*	*	*	*	*	*	*	*	*	*	*	*	*	*	*	*	*	*	*	*	*	*	*	*	*
F	*	*	*	*	*	*	*	*	*	*	*	*	*	*	*	*	*	*	*	*	*	*	*	*	*
G	*	*	*	*	*	*	*	*	*	*	*	*	*	*	*	*	*	*	*	*	*	*	*	*	*
H	*	*	*	*	*	*	*	*	*	*	*	*	*	*	*	*	*	*	*	*	*	*	*	*	*
I	*	*	*	*	*	*	*	*	*	*	*	*	*	*	*	*	*	*	*	*	*	*	*	*	*
J	*	*	*	*	*	*	*	*	*	*	*	*	*	*	*	*	*	*	*	*	*	*	*	*	*
K	*	*	*	*	*	*	*	*	*	*	*	*	*	*	*	*	*	*	*	*	*	*	*	*	*
L	*	*	*	*	*	*	*	*	*	*	*	*	*	*	*	*	*	*	*	*	*	*	*	*	*
M	*	*	*	*	*	*	*	*	*	*	*	*	*	*	*	*	*	*	*	*	*	*	*	*	*
N	*	*	*	*	*	*	*	*	*	*	*	*	*	*	*	*	*	*	*	*	*	*	*	*	*
O	*	*	*	*	*	*	*	*	*	*	*	*	*	*	*	*	*	*	*	*	*	*	*	*	*
P	*	*	*	*	*	*	*	*	*	*	*	*	*	*	*	*	*	*	*	*	*	*	*	*	*
Q	*	*	*	*	*	*	*	*	*	*	*	*	*	*	*	*	*	*	*	*	*	*	*	*	*
R	*	*	*	*	*	*	*	*	*	*	*	*	*	*	*	*	*	*	*	*	*	*	*	*	*
S	*	*	*	*	*	*	*	*	*	*	*	*	*	*	*	*	*	*	*	*	*	*	*	*	*
T	*	*	*	*	*	*	*	*	*	*	*	*	*	*	*	*	*	*	*	*	*	*	*	*	*
U	*	*	*	*	*	*	*	*	*	*	*	*	*	*	*	*	*	*	*	*	*	*	*	*	*
V	*	*	*	*	*	*	*	*	*	*	*	*	*	*	*	*	*	*	*	*	*	*	*	*	*
W	*	*	*	*	*	*	*	*	*	*	*	*	*	*	*	*	*	*	*	*	*	*	*	*	*
X	*	*	*	*	*	*	*	*	*	*	*	*	*	*	*	*	*	*	*	*	*	*	*	*	*
Y	*	*	*	*	*	*	*	*	*	*	*	*	*	*	*	*	*	*	*	*	*	*	*	*	*
Z	*	*	*	*	*	*	*	*	*	*	*	*	*	*	*	*	*	*	*	*	*	*	*	*	*

CORNER MONUMENT CAP STAMPING

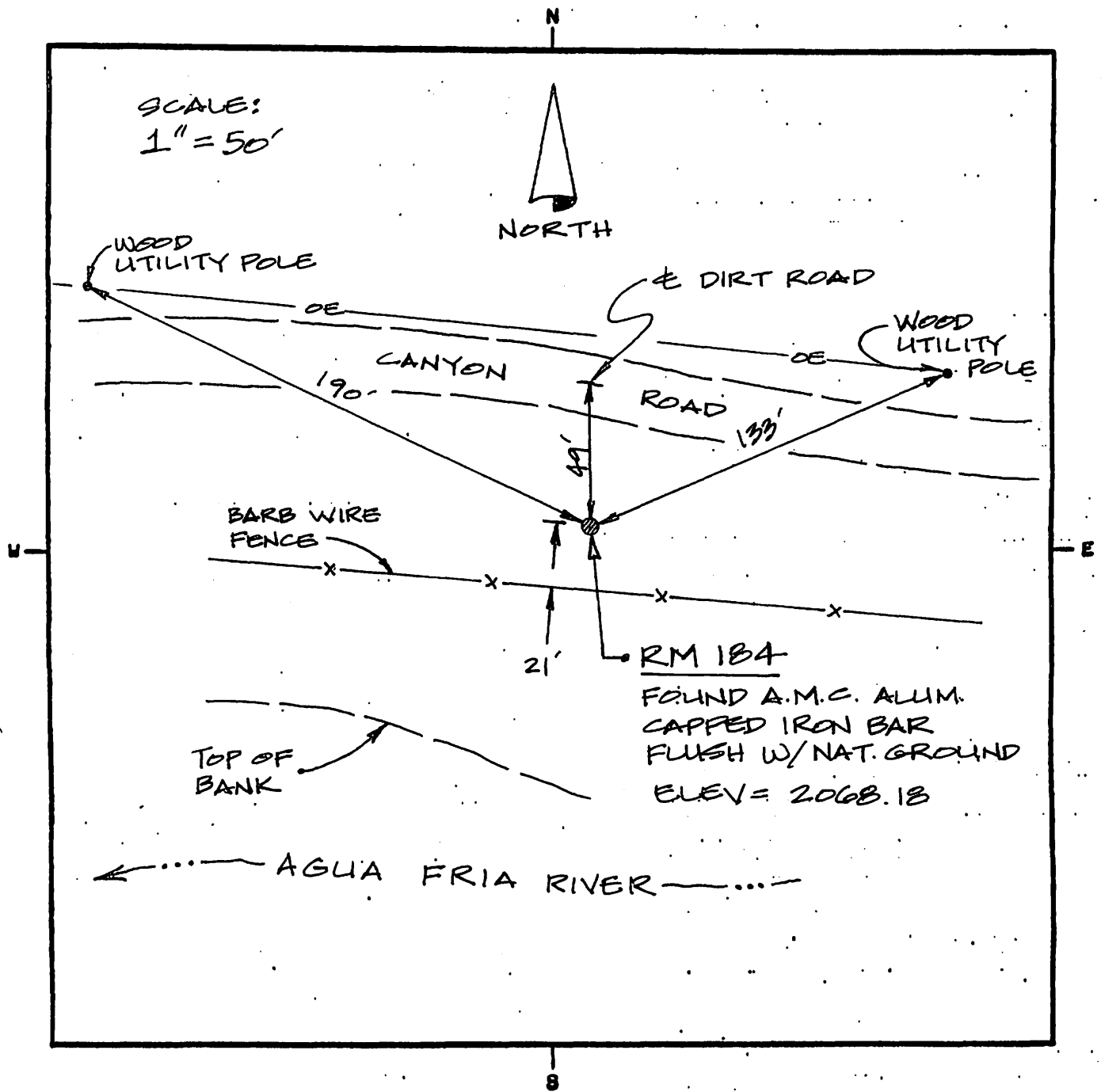


FILED RECORD OF SURVEY IN COUNTY RECORDS AT _____ BOOK _____, PAGE(S) _____
 ATTACHED SHEETS: WRITTEN TESTIMONY FIELD NOTE PAGE(S) OTHER _____

(OVER)

SKETCH OF CORNER TIES AND ACCESSORIES

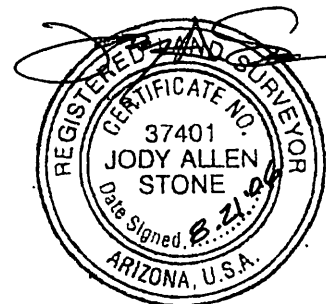
SCALE: 1" = 50'



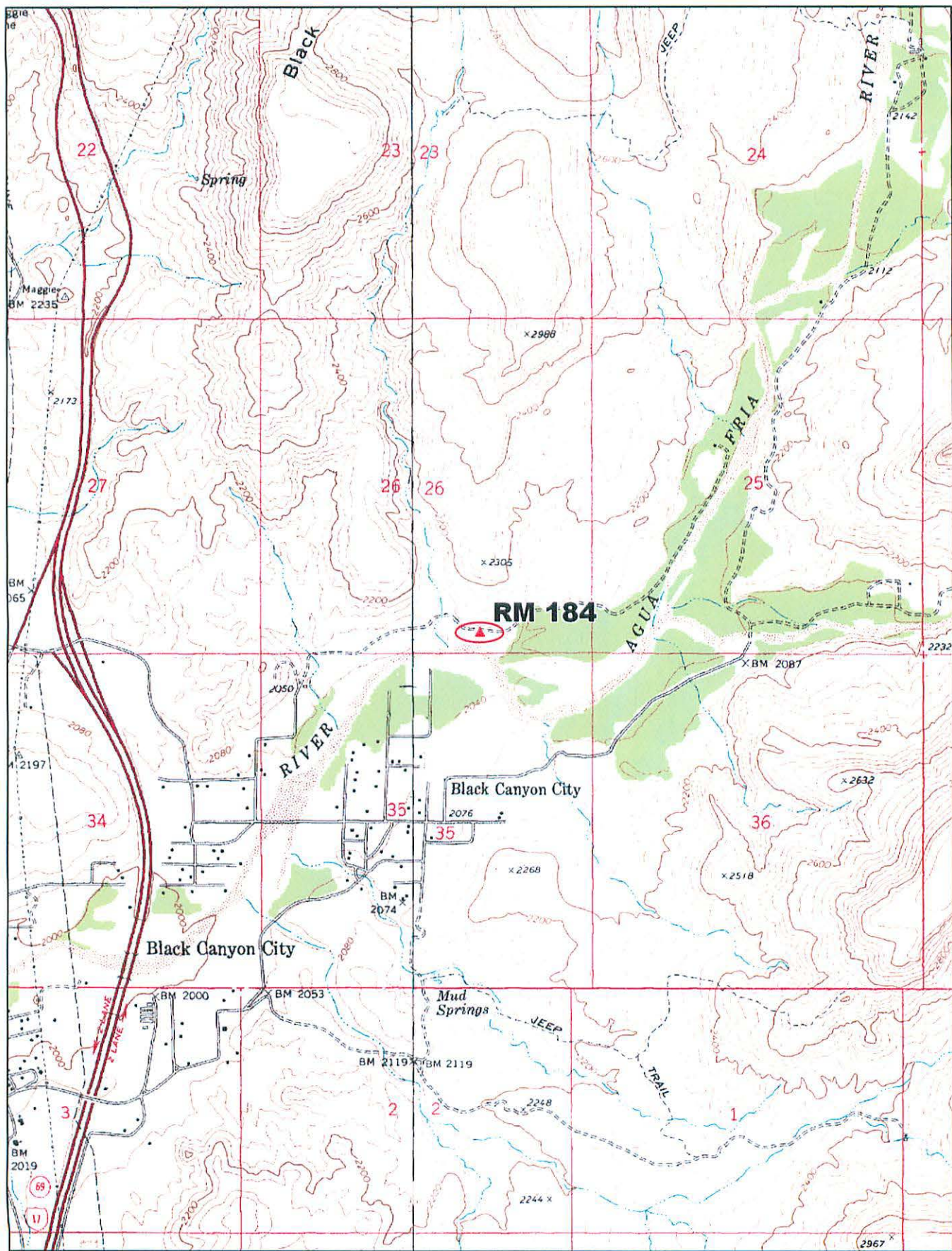
LAND SURVEYOR IDENTIFICATION AND CERTIFICATION

I, JODY A. STONE, ARIZONA R.L.S. NUMBER 37401, HEREBY CERTIFY THAT THIS CORNER RECORD WAS PREPARED UNDER MY DIRECTION, THAT ALL MONUMENTATION ACTUALLY EXISTS AS SHOWN HEREON.

COMPANY NAME JDS ASSOCIATES LLC
 STREET ADDRESS _____
 MAILING ADDRESS PO BOX 3240
 CITY, STATE, ZIP CAMP VERDE, AZ 86322
 TELEPHONE NUMBER (928) 567-8543



x _____
 SIGNATURE, SEAL AND DATE



© 2002 DeLorme, 3-D TopoQuads®. Data copyright of content owner.
www.delorme.com

