

**YAVAPAI COUNTY FLOOD CONTROL DISTRICT
REFERENCE MONUMENT RECORD
SITUATED IN SECTION 11, TOWNSHIP 10 NORTH, RANGE 5 WEST
GILA AND SALT RIVER MERIDIAN, YAVAPAI COUNTY, ARIZONA**

ERM #984

(THIS IS A NEW MONUMENT)

DESCRIPTION: THE POINT IS A YAVAPAI COUNTY FLOOD CONTROL DISTRICT ALUMINUM CAP AND REBAR LOCATED AT THE NORTH SIDE OF HIGHWAY 89 NORTHEAST OF THE SOUTHEAST CORNER FOR 16984 FOUNTAIN HILL LANE ACROSS FROM A BOULDER OUTCROP 25 FEET NORTH OF THE NORTH EDGE OF PAVEMENT IN YARNELL, AZ. MONUMENT IS STAMPED "YCFCD BM 984 RLS 33861"

WGS84 POSITION

LATITUDE: 34°12'59.78338"N
LONGITUDE: 112°45'11.52931"W
HEIGHT: 4763.1678 IFT

NAD83/NAVD88 AZ SP POSITION

NORTHING: 1171242.8155 IFT
EASTING: 447113.5691 IFT
ELEVATION: 4855.9239 IFT
SUPERSEDED: BM 172

NGS SOURCE POINT(R 18)

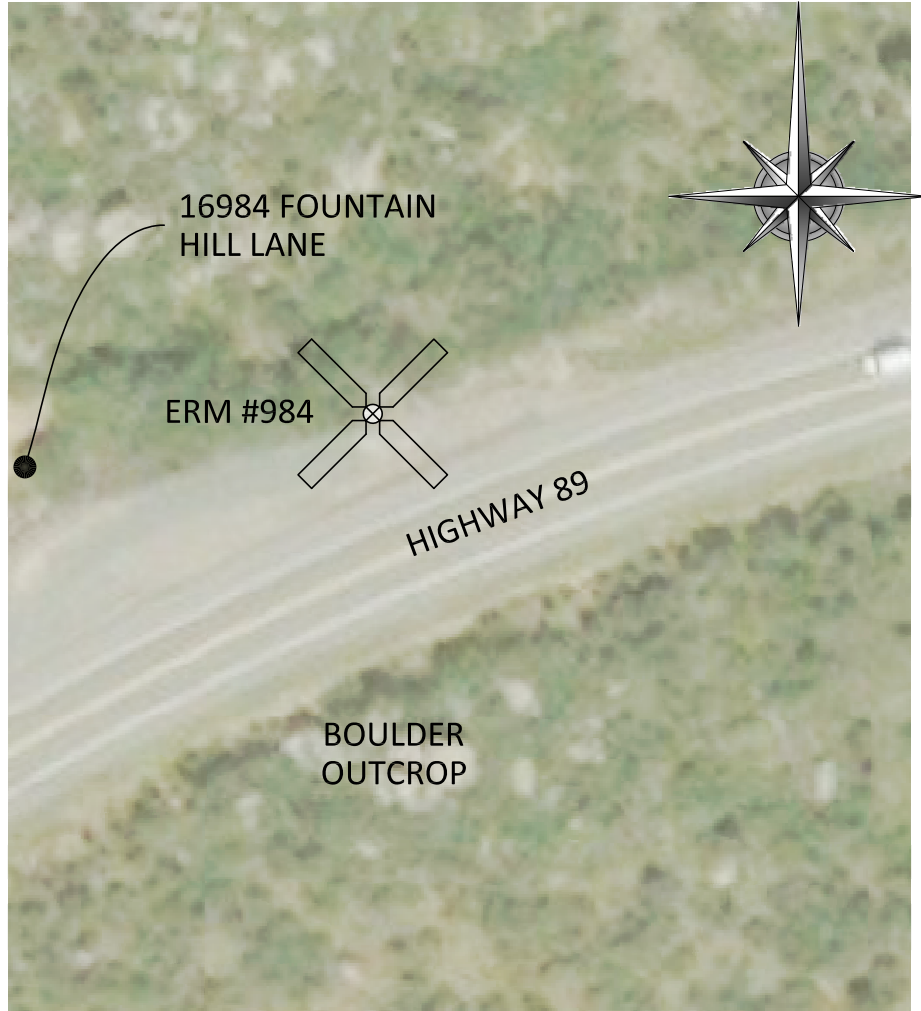
DESCRIPTION: A STANDARD USGS TABLET STAMPED PEEPLES 1969 CEMENTED ET0950 IN A LARGE BOULDER. TO REACH FROM THE POST OFFICE AT YARNELL GO NE. ALONG U.S. HIGHWAY 89 FOR 7.9 MI. TO HIGHWAY CUT. STATION IS ABOUT 75 FT. S. OF CUT ON RIDGE.

WGS84 POSITION

LATITUDE: 34°19'38.92414"N
LONGITUDE: 112°41'44.77635"W
HEIGHT: 4381.739 IFT

NAD83/NAVD88 AZ SP POSITION

NORTHING: 1211452.60 IFT
EASTING: 464784.62 IFT
ELEVATION: 4472.83(88) IFT

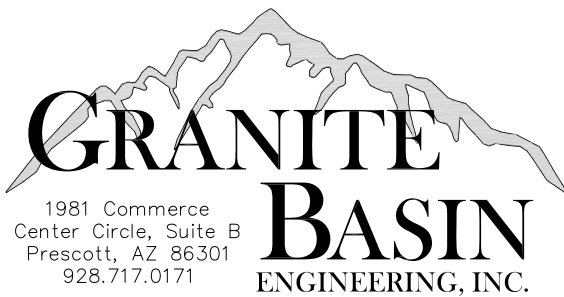
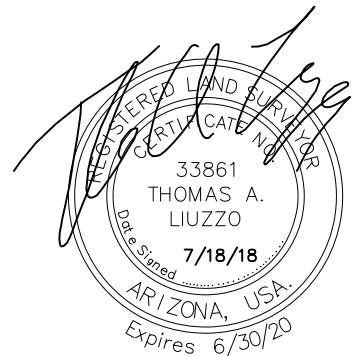


REFERENCE MARK NOTE

THE MARK IS CLASSIFIED AS A STABILITY TYPE "C". MAY HOLD BUT OF A TYPE COMMONLY SUBJECT TO GROUND MOVEMENT.

USGS QUADRANGLE: YARNELL

FIRM PANEL: 04025C3105G
PANEL NUMBER 3105 OF 3900



**YAVAPAI COUNTY FLOOD CONTROL
DISTRICT
REFERENCE MONUMENT RECORD
ERM #984**

PREPARED FOR: YAVAPAI COUNTY FLOOD CONTROL DISTRICT 1120 COMMERCE DRIVE PRESCOTT, AZ 86305	GBE JOB #: 17106-02	BY: DJP
	DATE: JULY 2018	SCALE: 1"=150'