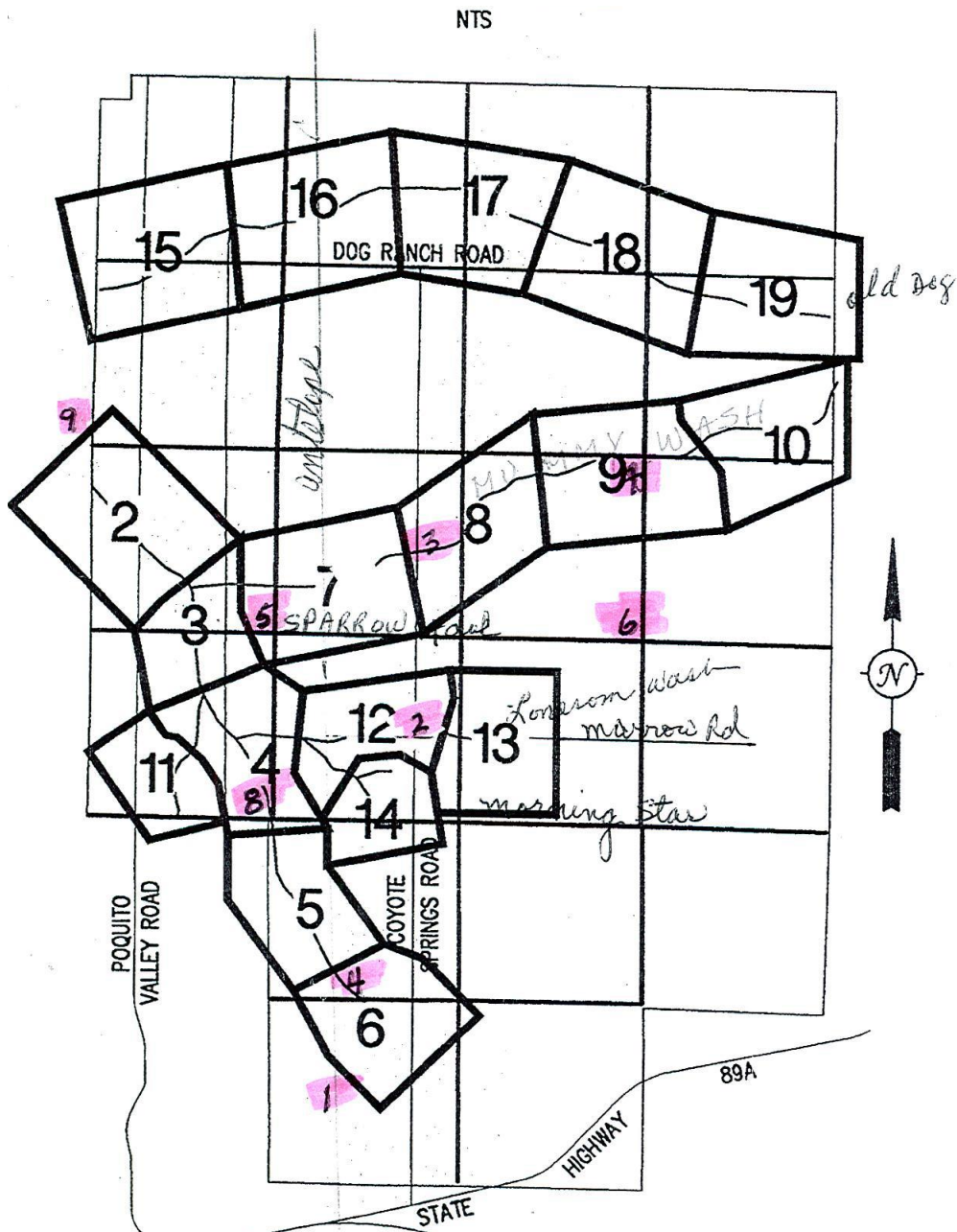


Poquito Valley Flood Hazard Study Elevation Reference Monuments

INDEX MAP



Elevation Reference Marks

ELEVATION REFERENCE MARKS

NOTE: ALL ELEVATIONS ARE BASED ON NATIONAL GEODETIC VERTICAL DATUM OF 1929.

ID. NUMBER ELEVATION DESCRIPTION/LOCATION

POQERM1	4903.98	3" AC AGAINST SOUTH FACE OF CONCRETE HEADWALL AT NE COR OF VIEWPOINT DR. & COURAGE BUTTE TR.
POQERM2	4897.22	3" AC AGAINST N END OF 1' WIDE CUT OFF WALL, APPROX 165' N AND 16' W OF INTERSECTION OF COYOTE SPRINGS RD. & MARROW RD.
POQERM3	4910.06	3" AC AGAINST CENTER/E SIDE OF W HEADWALL APPROX 270' S AND 24' W OF CL INTERSECT. OF COYOTE SPRINGS RD. & PLUM CREEK WAY.
POQERM4	4891.26	3" BC AT S 1/4 SEC 24, TOWNSHIP 15 NORTH, RANGE 1 WEST
POQERM5	4875.87	3" BC AT SE COR SEC 11, TOWNSHIP 15 NORTH, RANGE 1 WEST
POQERM6	4934.31	3.25" GLO BC AT SE COR SEC 12, TOWNSHIP 15 NORTH, RANGE 1 WEST
POQERM7	5014.03	2.5" GLO BC AT SE COR SEC 6, TOWNSHIP 15 NORTH, RANGE 1 EAST
POQERM8	4868.52	3" BC AT SE COR SEC 14, TOWNSHIP 15 NORTH, RANGE 1 WEST
POQERM9	4834.11	2" AC AT SE COR SEC 3, TOWNSHIP 15 NORTH, RANGE 1 WEST

NOTES

POQERM1

VertCon Conversation

Latitude: 34 39 49.12892

Longitude: 112 20 13.52742

NGVD 29 height: 4903.98 ft

Datum shift (NAVD 88 minus NGVD 29): 2.766 feet

Converted to NAVD 88 height: 4906.746 feet

POQERM2

VertCon Conversation

Latitude: 34.680181

Longitude: 112.311312

NGVD 29 height: 4897.22 ft

Datum shift (NAVD 88 minus NGVD 29): 2.743 feet

Converted to NAVD 88 height: 4899.963 feet

POQERM3

VertCon Conversation

Latitude: 34.693534

Longitude: 112.3113354

NGVD 29 height: 4910.06 ft

Datum shift(NAVD 88 minus NGVD 29): 2.739 feet

Converted to NAVD 88 height: 4912.800 feet

POQERM4

VertCon Conversation

Latitude: 34.658006

Longitude: 112.31562696

NGVD 29 height: 4891.26 ft

Datum shift(NAVD 88 minus NGVD 29): 2.749 feet

Converted to NAVD 88 height: 4894.010 feet

POQERM5

VertCon Conversation

Latitude: 34.686996

Longitude: 112.324389

NGVD 29 height: 4875.87 ft

Datum shift(NAVD 88 minus NGVD 29): 2.743 feet

Converted to NAVD 88 height: 4878.613 feet

POQERM6

VertCon Conversation

Latitude: 34.68700187

Longitude: 112.30682975

NGVD 29 height: 4934.31 ft

Datum shift(NAVD 88 minus NGVD 29): 2.739 feet

Converted to NAVD 88 height: 4937.050 feet

POQERM7

VertCon Conversation

Latitude: 34.7015661

Longitude: 112.28971639

NGVD 29 height: 5014.03 ft

Datum shift(NAVD 88 minus NGVD 29): 2.753 feet

Converted to NAVD 88 height: 5016.783 feet

POQERM8

VertCon Conversation

Latitude: 34 40 20.77327

Longitude: 112 19 27.65115

NGVD 29 height: 4868.52 ft

Datum shift(NAVD 88 minus NGVD 29): 2.749 feet

Converted to NAVD 88 height: 4871.270 feet

POQERM9

VertCon Conversation

Latitude: 34.70150165

Longitude: 112.34181306

NGVD 29 height: 4834.11 ft

Datum shift (NAVD 88 minus NGVD 29): 2.736 feet

Converted to NAVD 88 height: 4836.846 feet