

ELEVATION REFERENCE MONUMENT

ERM: 507

Panel: 1490

Elevation (NAVD88): 4236.85

Elevation (NGVD29): 4234.24

Latitude: 34°47'04" N

Longitude: 111°44'12" W

Description: Aerial Mapping Company capped rebar flush approximately 0.18 miles west along Jacks Canyon Road from intersection of Canyon Ridge Circle and Jacks Canyon Road, and approximately 24.5 feet north from the centerline of pavement on Jacks Canyon Road.

MONUMENT RECORD FORM

CORNER LOCATION INFORMATION

SECTION 17, CORNER INDEX CODE
TOWNSHIP 16 NORTH, RANGE 6 EAST
6 SR MERIDIAN YAVAPAL COUNTY
CORNER TYPE:
[] ALIQUOT GOV'T COR. [] NON-ALIQUOT GOV'T COR. [] OTHER
FORMAL CORNER NAME: 507

COUNTY FILING INFORMATION

APPLY COUNTY STICKER HERE IF APPLICABLE
FEE \$
DOCKET PAGE
COUNTY, ARIZONA
DATE HOUR
FEE: PAGES
REQUEST OF:
TITLE:
[] SUBMITTED TO BE CHECKED FOR COMPLETENESS
[] FILED AT REQUEST OF COUNTY REVIEWER
TITLE:
SIGNED: DATE:

NOTES FOR USING TOWNSHIP INDEX TO DETERMINE INDEX CODE
FOR ALIQUOT SECTION, QUARTER, AND SIXTEENTH CORNERS, PUT
A CIRCLE AT THE CORNER LOCATION, THEN READ GRID DESIGN-
INATION (A-1 THRU Z-25). A CORNER THAT APPLIES TO TWO
OR MORE TOWNSHIPS SHOULD BE INDEXED UNDER THE TOWNSHIP
NORTH OR WEST OF THE CORNER LOCATION AS INDICATED BY
THE HEAVY LINE ON THE INDEX (GENERALLY THE SOUTH AND
EAST LINES EXCEPT THE N.E. AND S.W. CORNERS). CLOSING
CORNERS WILL BE INDEXED UNDER THE TOWNSHIP TO WHICH THEY
APPLY. FOR 1/64 CORNERS AND FURTHER DIVISIONS, AND
FOR NON-ALIQUOT CORNERS LYING BETWEEN GRID DESIGNATIONS
OR WITHIN A GRID SQUARE ON THE INDEX, DRAW AN APPROPRIATE
REFERENCE LINE OR SHAPE ON THE INDEX, THEN CIRCLE THE
CORNER LOCATION AND SPECIFY THE NEAREST INDEX CODE TO
THE NORTH OR WEST (IF ON A GRID LINE), OR AT THE
NORTHWEST CORNER OF THE GRID BLOCK.

TOWNSHIP INDEX

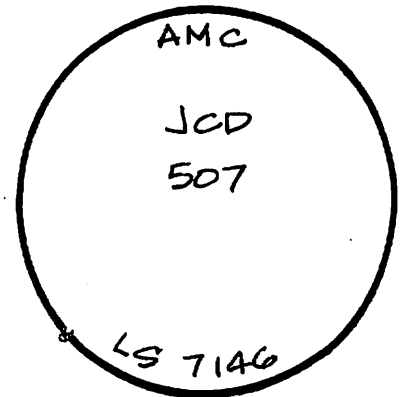
SCALE: 1" = 10,000'

Grid table with columns 1-25 and rows A-V. Contains numerical data points for township index.

MONUMENT FIELD VISIT INFORMATION

DATE OF FIELD VISIT: 02/03/1995
MONUMENT:
[] LEFT AS FOUND [] FOUND & TAGGED [] FOUND & REBUILT
[] RESTORED LOST CORNER [] ESTABLISHED NEW ACCESSORIES
STATE PLANE COORDINATES: [] ESTABLISHED TO ORDER
ZONE: [] WEST [] CENTRAL [] EAST [] NOT ESTABLISHED
DATA: [] N.A.D. 1927 (FEET) [] N.A.V.D. 1929 (FEET)
Y= X= EL.=
[] N.A.D. 1983 (METERS) [] N.A.V.D. 1988 (METERS)
N= E= EL.=
LAT. NORTH, LONG. WEST
GEOID HEIGHT SCALE FACTOR
CONTROL STATIONS USED: SEE BELOW

CORNER MONUMENT CAP STAMPING



DESCRIBE RECORD EVIDENCE FOUND, INCLUDING TIES AND ACCESSORIES, OR IF A
MONUMENT NOT OF RECORD, TELL WHY YOU ACCEPTED IT AS VALID. DESCRIBE ANY
ACTIONS TAKEN BY YOU TO REHABILITATE OR PERPETUATE THIS MONUMENT IF
FOUND IN PERISHABLE OR DETERIORATED CONDITION. IF NO EVIDENCE OF THE
ORIGINAL MONUMENT OR ITS LOCATION CAN BE FOUND, DESCRIBE THE PROCEDURE
FOLLOWED IN THE RESTORATION OF THE MONUMENT AND THE CONTROLLING CORNERS
USED, INCLUDING ALL RECORD OF SURVEY REFERENCES. DESCRIBE ANY NEW MONU-
MENT SET (INCLUDING ACCESSORY MONUMENTS) AS TO MATERIAL, SHAPE, MARKING,
PROJECTION OR BURIAL, AND DISPOSITION OF OLD MONUMENT. DESCRIBE NEW
TIES AND ACCESSORIES IN COORDINATION WITH THE SKETCH ON THE REVERSE.
DESCRIBE ANY CONFLICTING MONUMENTS OR EVIDENCE AND YOUR CONCLUSIONS.

PT 507

FOUND ALUM. CAPPED REBAR
(INTACT)

ESTABLISHED NEW TIES

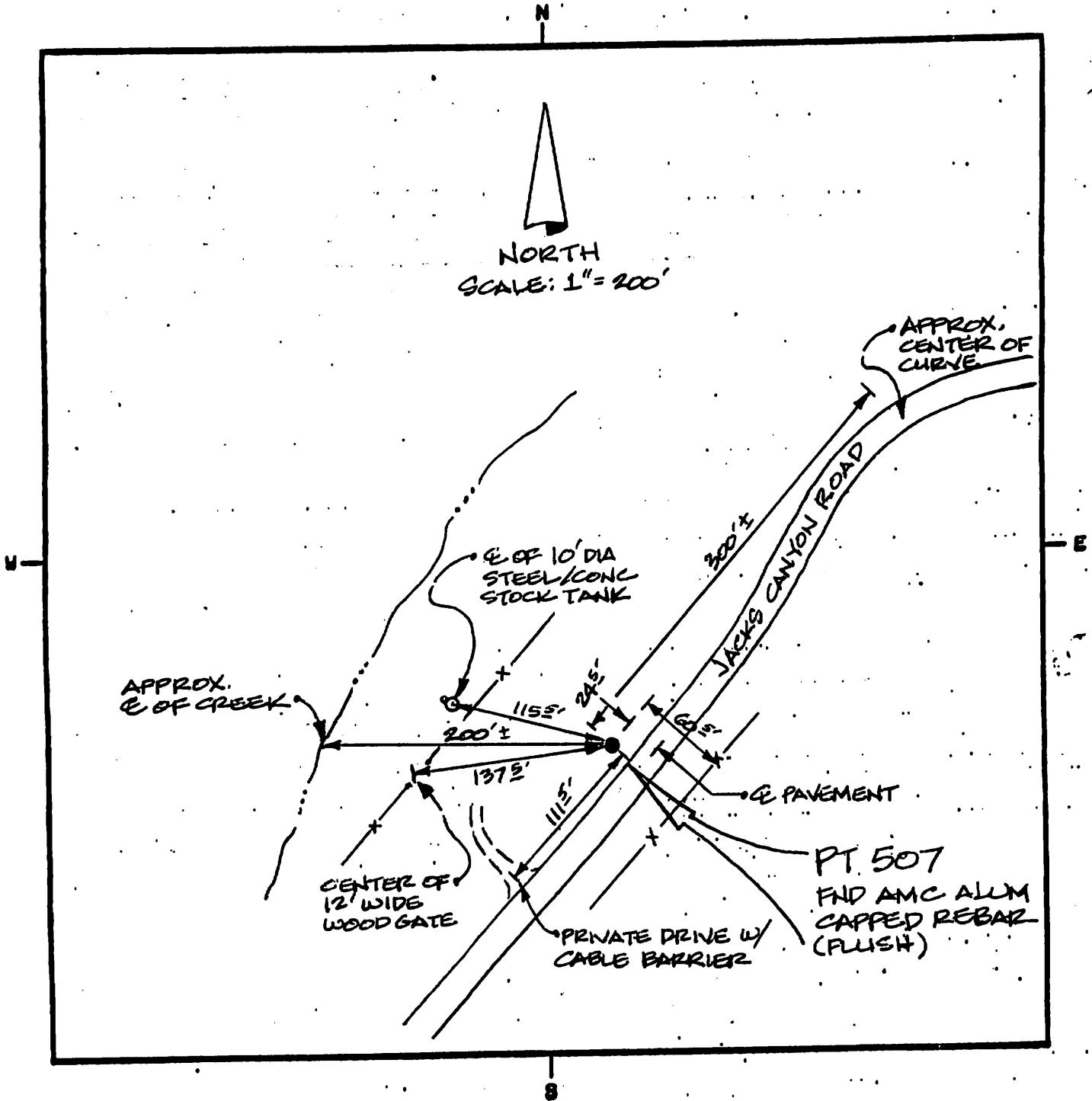
ELEV = 4234.24 PER YAVAPAL COUNTY ENG.
DEPT. IMPROVEMENT PLANS FOR JACKS CANYON ROAD.

(ELEVATION OF THIS CAP AS DETERMINED FROM PT. 505 = 4234.275)

[] FILED RECORD OF SURVEY IN COUNTY RECORDS AT BOOK PAGE(S)
ATTACHED SHEETS: [] WRITTEN TESTIMONY [] FIELD NOTE PAGE(S) [] OTHER

(OVER)

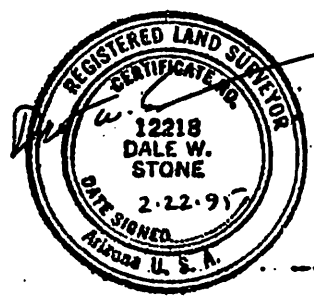
1490



LAND SURVEYOR IDENTIFICATION AND CERTIFICATION

I, DALE W. STONE, ARIZONA R.L.S. NUMBER 12218, HEREBY CERTIFY THAT THIS CORNER RECORD WAS PREPARED UNDER MY DIRECTION, THAT ALL MONUMENTATION ACTUALLY EXISTS AS SHOWN HEREON.

COMPANY NAME DALE W. STONE RLS
 STREET ADDRESS _____
 MAILING ADDRESS PO BOX 1288
 CITY, STATE, ZIP CAMP VERDE, AZ 86322
 TELEPHONE NUMBER (602) 567-5344



SIGNATURE, SEAL AND DATE