

ELEVATION REFERENCE MONUMENT

ERM: 74

Panel: 510

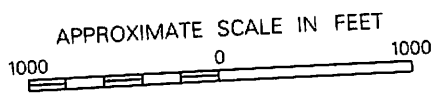
Elevation (NAVD88): 5056.79

Elevation (NGVD29): 5053.96

Latitude: 35°12'30" N

Longitude: 112°30'13" W

Description: Aerial Mapping Company PK nail in railroad tie between rails, approximately 125 feet south of the south end of a bridge crossing, approximately 3,100 feet east and approximately 300 feet south of the northwest corner of Section 16, T21N, R2W.



510

NATIONAL FLOOD INSURANCE PROGRAM

FIRM  **ORIGINAL**

FLOOD INSURANCE RATE MAP

**YAVAPAI COUNTY,
ARIZONA AND
INCORPORATED AREAS**

PANEL 510 OF 3925
(SEE MAP INDEX FOR PANELS NOT PRINTED)

<u>CONTAINS:</u> <u>COMMUNITY</u>	<u>NUMBER</u>	<u>PANEL</u>	<u>SUFFIX</u>
YAVAPAI COUNTY, UNINCORPORATED AREAS	040093	0510	F

**MAP NUMBER
04025C0510 F**

**EFFECTIVE DATE:
JUNE 6, 2001**



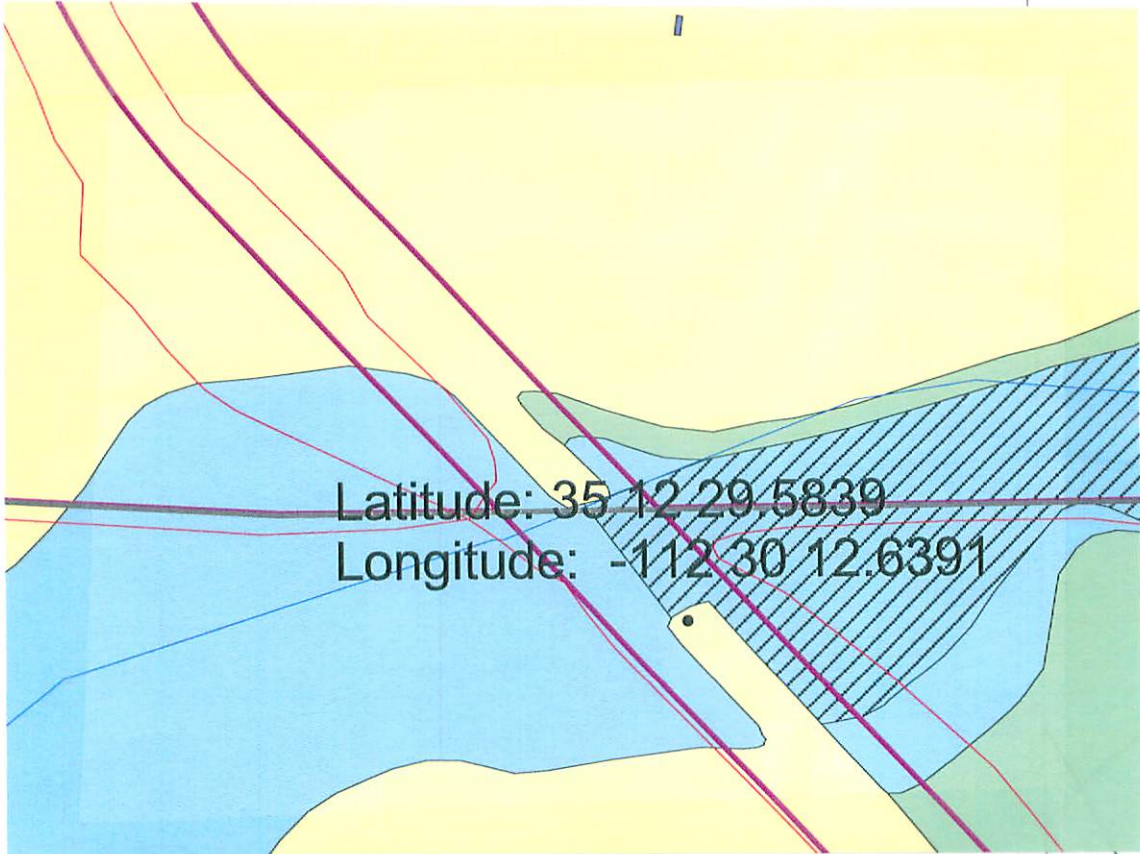
Federal Emergency Management Agency

112°33'45"
35°15'00"

REFERENCE MARK	ELEVATION (FEET NGVD)	ELEVATION REFERENCE MARKS	DESCRIPTION OF LOCATION
----------------	-----------------------	---------------------------	-------------------------

MOB 63

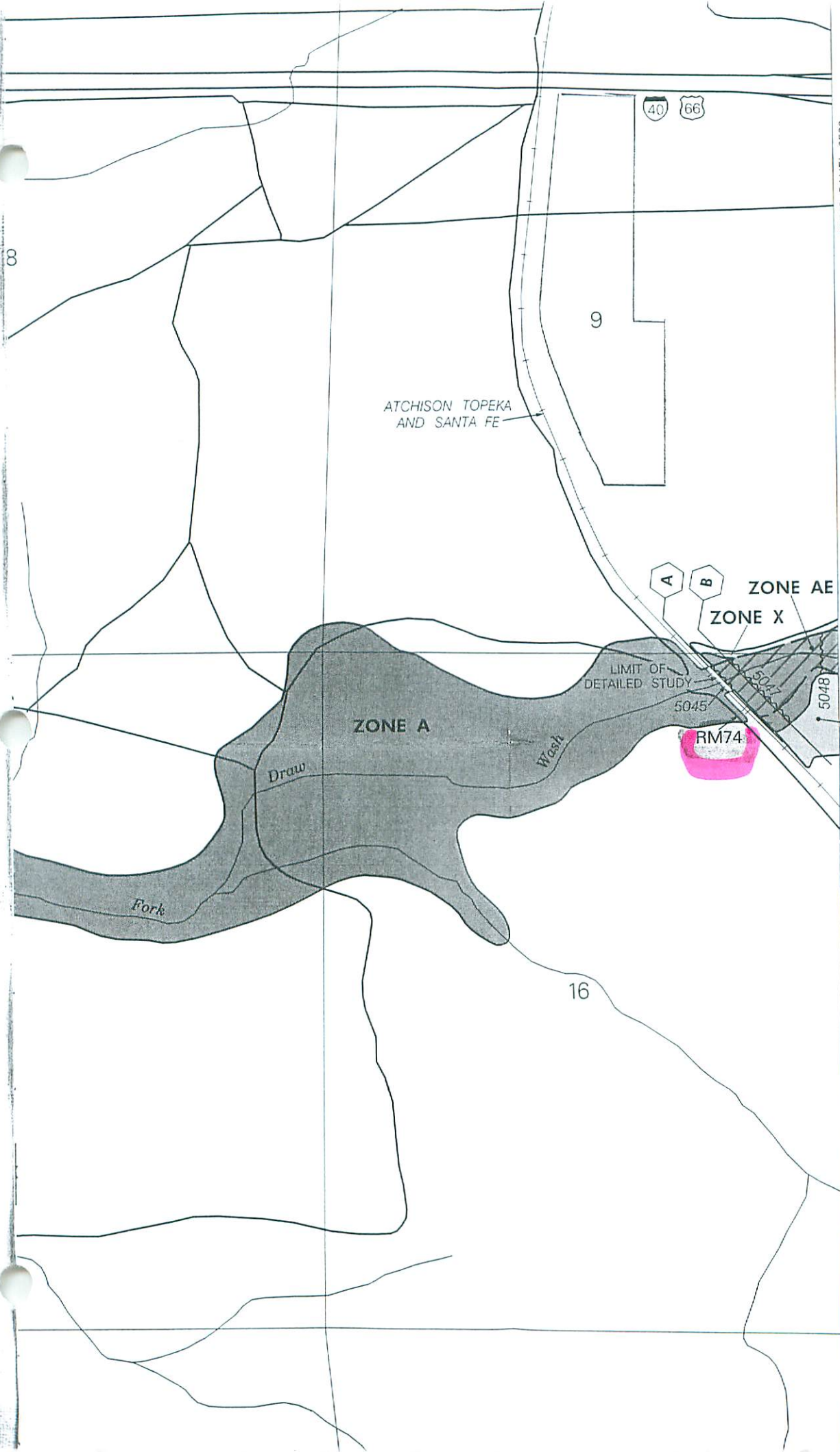
RM74	5053.96	Aerial Mapping Company	PK nail in railroad tie between rails, approximately 125 feet south of the south end of a bridge crossing, approximately 3,100 feet east and approximately 300 feet south of the northwest corner of Section 16, T21N, R2W.
------	---------	------------------------	---



1

2

3



JOINS PANEL 0530

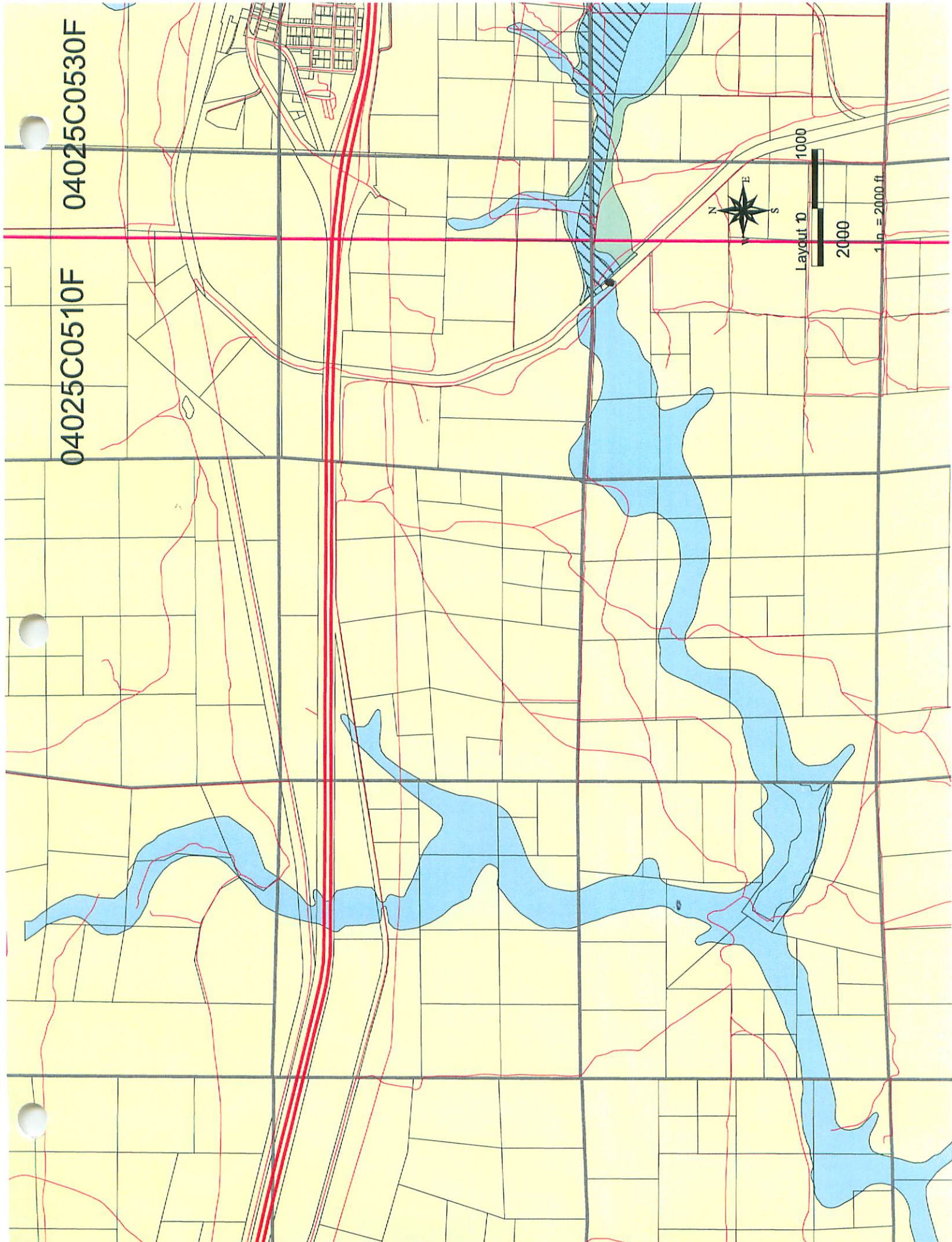
Flood to El
Corps shoul
limits
This Resou
under
For r
Sectio
For a
Map

E

Refer
on
zone
To c
call t

04025C0510F

04025C0530F



Layout 10

2000

1 in. = 2000 ft.