

ELEVATION REFERENCE MONUMENT

ERM: 33A
Panel: 1445

Elevation (NAVD88): 3693.21
Elevation (NGVD29): 3690.65

Latitude: 34°48'06" N
Longitude: 111°52'48" W

Description: Yavapai County Flood Control District aluminum cap on 5/8" rebar in concrete at barbed wire fence junction approximately 136 feet southeasterly of east end of steel bridge at Deer Pass Road crossing of Oak Creek.

YAVAPAI COUNTY FLOOD CONTROL DISTRICT

MONUMENT RECORD FORM

CORNER LOCATION INFORMATION

SECTION 12, CORNER INDEX CODE _____
 TOWNSHIP 16 NORTH, RANGE 4 EAST
693 R MERIDIAN YAVAPAI COUNTY

CORNER TYPE:
 ALIQUOT GOV'T COR. NON-ALIQUOT GOV'T COR. OTHER
 FORMAL CORNER NAME: RM 33A

COUNTY FILING INFORMATION

APPLY COUNTY STICKER HERE IF APPLICABLE

FEE \$ _____
 DOCKET _____ PAGE _____
 _____ COUNTY, ARIZONA

DATE _____ HOUR _____
 FEE: _____ PAGES _____
 REQUEST OF: _____

TITLE: _____
 SUBMITTED TO BE CHECKED FOR COMPLETENESS
 FILED AT REQUEST OF COUNTY REVIEWER

TITLE: _____
 SIGNED: _____ DATE: _____

TOWNSHIP INDEX

SCALE: 1" = 10,000'

	1	2	3	4	5	6	7	8	9	10	11	12	13	14	15	16	17	18	19	20	21	22	23	24	25
A	+	+	+	+	+	+	+	+	+	+	+	+	+	+	+	+	+	+	+	+	+	+	+	+	+
B	+	+	+	+	+	+	+	+	+	+	+	+	+	+	+	+	+	+	+	+	+	+	+	+	+
C	+	+	+	+	+	+	+	+	+	+	+	+	+	+	+	+	+	+	+	+	+	+	+	+	+
D	+	+	+	+	+	+	+	+	+	+	+	+	+	+	+	+	+	+	+	+	+	+	+	+	+
E	+	+	+	+	+	+	+	+	+	+	+	+	+	+	+	+	+	+	+	+	+	+	+	+	+
F	+	+	+	+	+	+	+	+	+	+	+	+	+	+	+	+	+	+	+	+	+	+	+	+	+
G	+	+	+	+	+	+	+	+	+	+	+	+	+	+	+	+	+	+	+	+	+	+	+	+	+
H	+	+	+	+	+	+	+	+	+	+	+	+	+	+	+	+	+	+	+	+	+	+	+	+	+
I	+	+	+	+	+	+	+	+	+	+	+	+	+	+	+	+	+	+	+	+	+	+	+	+	+
J	+	+	+	+	+	+	+	+	+	+	+	+	+	+	+	+	+	+	+	+	+	+	+	+	+
K	+	+	+	+	+	+	+	+	+	+	+	+	+	+	+	+	+	+	+	+	+	+	+	+	+
L	+	+	+	+	+	+	+	+	+	+	+	+	+	+	+	+	+	+	+	+	+	+	+	+	+
M	+	+	+	+	+	+	+	+	+	+	+	+	+	+	+	+	+	+	+	+	+	+	+	+	+
N	+	+	+	+	+	+	+	+	+	+	+	+	+	+	+	+	+	+	+	+	+	+	+	+	+
O	+	+	+	+	+	+	+	+	+	+	+	+	+	+	+	+	+	+	+	+	+	+	+	+	+
P	+	+	+	+	+	+	+	+	+	+	+	+	+	+	+	+	+	+	+	+	+	+	+	+	+
Q	+	+	+	+	+	+	+	+	+	+	+	+	+	+	+	+	+	+	+	+	+	+	+	+	+
R	+	+	+	+	+	+	+	+	+	+	+	+	+	+	+	+	+	+	+	+	+	+	+	+	+
S	+	+	+	+	+	+	+	+	+	+	+	+	+	+	+	+	+	+	+	+	+	+	+	+	+
T	+	+	+	+	+	+	+	+	+	+	+	+	+	+	+	+	+	+	+	+	+	+	+	+	+
U	+	+	+	+	+	+	+	+	+	+	+	+	+	+	+	+	+	+	+	+	+	+	+	+	+
V	+	+	+	+	+	+	+	+	+	+	+	+	+	+	+	+	+	+	+	+	+	+	+	+	+
W	+	+	+	+	+	+	+	+	+	+	+	+	+	+	+	+	+	+	+	+	+	+	+	+	+
X	+	+	+	+	+	+	+	+	+	+	+	+	+	+	+	+	+	+	+	+	+	+	+	+	+
Y	+	+	+	+	+	+	+	+	+	+	+	+	+	+	+	+	+	+	+	+	+	+	+	+	+
Z	+	+	+	+	+	+	+	+	+	+	+	+	+	+	+	+	+	+	+	+	+	+	+	+	+

MONUMENT FIELD VISIT INFORMATION

DATE OF FIELD VISIT: 02/14/98 ~ 03/03/98

MONUMENT:
 LEFT AS FOUND FOUND & TAGGED FOUND & REBUILT
 RESTORED LOST CORNER ESTABLISHED NEW ACCESSORIES

STATE PLANE COORDINATES: ESTABLISHED TO _____ ORDER

ZONE: WEST CENTRAL EAST NOT ESTABLISHED

DATA: N.A.D. 1927 (FEET) N.A.V.D. 1929 (FEET)

X = _____ EL. = _____

N.A.D. 1983 (METERS) N.A.V.D. 1988 (METERS)

N = _____ E = _____ EL. = _____

LAT. _____ NORTH, LONG. _____ WEST

GEOD HEIGHT _____ SCALE FACTOR _____

CONTROL STATIONS USED: RM 39 (FOUND INTACT)

ELEV = 3628.56 PER FIRM PANEL 860

DESCRIBE RECORD EVIDENCE FOUND, INCLUDING TIES AND ACCESSORIES, OR IF A MONUMENT NOT OF RECORD, TELL WHY YOU ACCEPTED IT AS VALID. DESCRIBE ANY ACTIONS TAKEN BY YOU TO REHABILITATE OR PERPETUATE THIS MONUMENT IF FOUND IN PERISHABLE OR DETERIORATED CONDITION. IF NO EVIDENCE OF THE ORIGINAL MONUMENT OR ITS LOCATION CAN BE FOUND, DESCRIBE THE PROCEDURE FOLLOWED IN THE RESTORATION OF THE MONUMENT AND THE CONTROLLING CORNERS USED, INCLUDING ALL RECORD OF SURVEY REFERENCES. DESCRIBE ANY NEW MONUMENT SET (INCLUDING ACCESSORY MONUMENTS) AS TO MATERIAL, SHAPE, MARKING, PROJECTION OR BURIAL, AND DISPOSITION OF OLD MONUMENT. DESCRIBE NEW TIES AND ACCESSORIES IN COORDINATION WITH THE SKETCH ON THE REVERSE. DESCRIBE ANY CONFLICTING MONUMENTS OR EVIDENCE AND YOUR CONCLUSIONS.

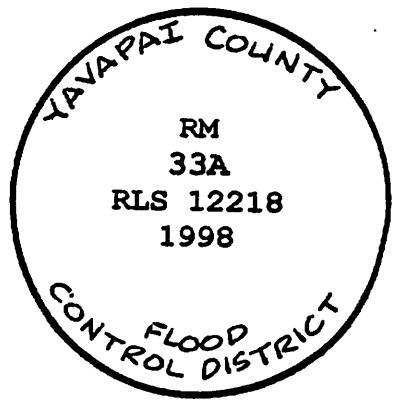
RM 33A

SET TO REPLACE RM 33 (NOT FOUND) PER
YCFCP INSTRUCTIONS

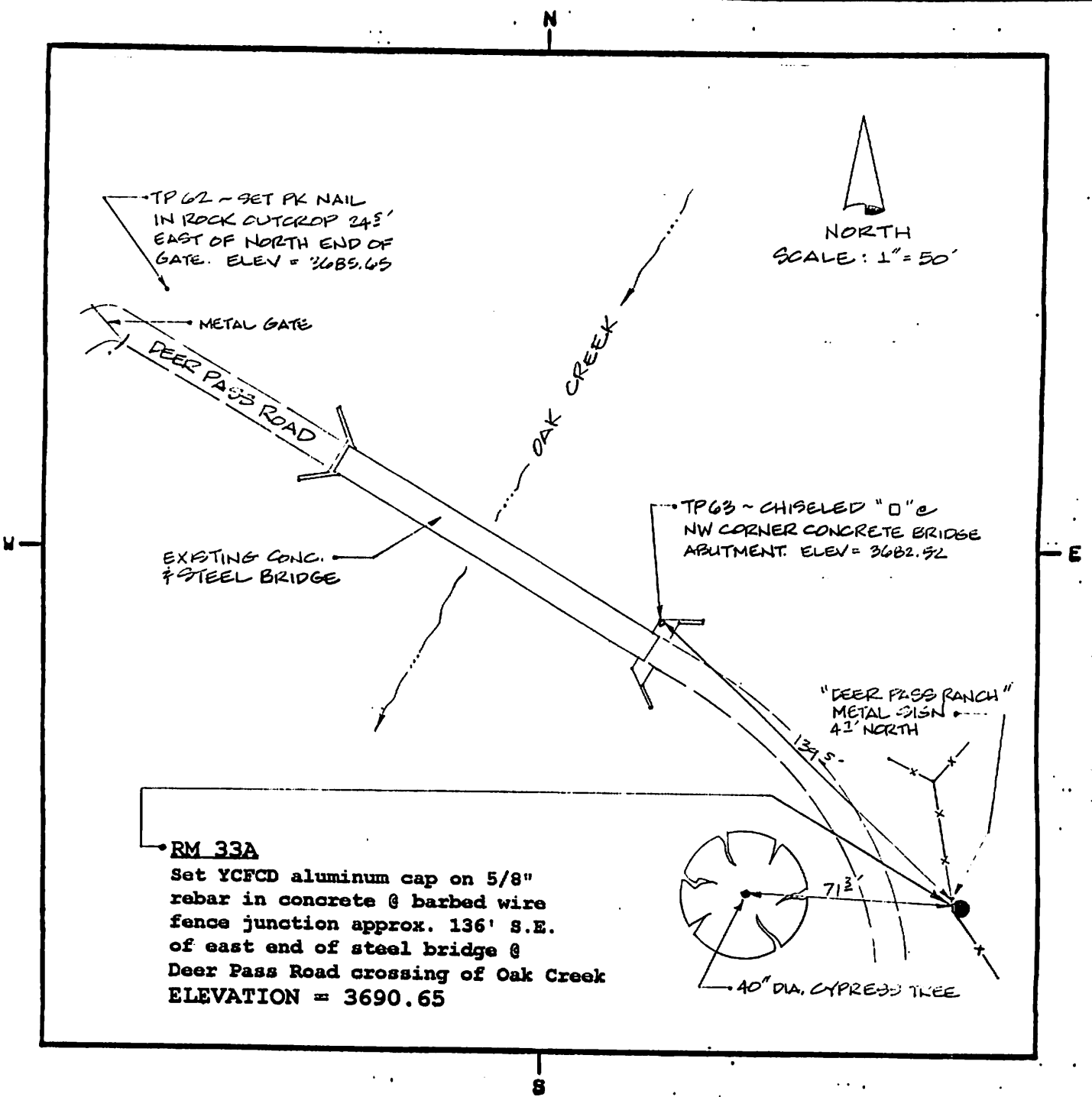
ELEV = 3690.65

(ESTABLISHED FROM RM 39)

CORNER MONUMENT CAP STAMPING



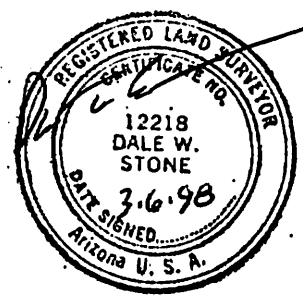
FILED RECORD OF SURVEY IN COUNTY RECORDS AT _____ BOOK _____, PAGE(S) _____
 ATTACHED SHEETS: WRITTEN TESTIMONY FIELD NOTE PAGE(S) OTHER _____



LAND SURVEYOR IDENTIFICATION AND CERTIFICATION

I, DALE W. STONE, ARIZONA R.L.S. NUMBER 12218, HEREBY CERTIFY THAT THIS CORNER RECORD WAS PREPARED UNDER MY DIRECTION, THAT ALL MONUMENTATION ACTUALLY EXISTS AS SHOWN HEREON.

COMPANY NAME DALE W. STONE
 STREET ADDRESS _____
 MAILING ADDRESS PO BOX 1288
 CITY, STATE, ZIP CAMP VERDE AZ 86322
 TELEPHONE NUMBER (520) 567-9344



X
 SIGNATURE, SEAL AND DATE