

ELEVATION REFERENCE MONUMENT

ERM: 5
Panel: 1470

Elevation (NAVD88): 4002.24
Elevation (NGVD29): 3999.67

Latitude: 34°46'09" N
Longitude: 111°45'53" W

Description: Arizona Highway Department brass cap stamped "ELEV. 4001.02 + STA 345-35 1961" on top of south headwall for an existing cattleguard 99.2 feet east of intersection of Highway 179 & Wild Horse Mesa Drive.

YAVAPAI COUNTY FLOOD CONTROL DISTRICT

MONUMENT RECORD FORM

CORNER LOCATION INFORMATION

SECTION 24, CORNER INDEX CODE _____
 TOWNSHIP 510 NORTH, RANGE 5 EAST
G.S.R. MERIDIAN YAVAPAI COUNTY

CORNER TYPE:

ALIQUOT GOV'T COR. NON-ALIQUOT GOV'T COR. OTHER
 FORMAL CORNER NAME: TBM 5

NOTES FOR USING TOWNSHIP INDEX TO DETERMINE INDEX CODE
 FOR ALIQUOT SECTION, QUARTER, AND SIXTEENTH CORNERS, PUT A CIRCLE AT THE CORNER LOCATION, THEN READ GRID DESIGNATION (A-1 THRU 2-25). A CORNER THAT APPLIES TO TWO OR MORE TOWNSHIPS SHOULD BE INDEXED UNDER THE TOWNSHIP NORTH OR WEST OF THE CORNER LOCATION AS INDICATED BY THE HEAVY LINE ON THE INDEX (GENERALLY THE SOUTH AND EAST LINES EXCEPT THE N.E. AND S.W. CORNERS). CLOSING CORNERS WILL BE INDEXED UNDER THE TOWNSHIP TO WHICH THEY APPLY. FOR 1/64 CORNERS AND FURTHER DIVISIONS, AND FOR NON-ALIQUOT CORNERS LYING BETWEEN GRID DESIGNATIONS OR WITHIN A GRID SQUARE ON THE INDEX, DRAW AN APPROPRIATE REFERENCE LINE OR SHAPE ON THE INDEX, THEN CIRCLE THE CORNER LOCATION AND SPECIFY THE NEAREST INDEX CODE TO THE NORTH OR WEST (IF ON A GRID LINE), OR AT THE NORTHWEST CORNER OF THE GRID BLOCK.

MONUMENT FIELD VISIT INFORMATION

DATE OF FIELD VISIT: _____

MONUMENT:

LEFT AS FOUND FOUND & TAGGED FOUND & REBUILT
 RESTORED LOST CORNER ESTABLISHED NEW ACCESSORIES

STATE PLANE COORDINATES: ESTABLISHED TO _____ ORDER

ZONE: WEST CENTRAL EAST NOT ESTABLISHED

DATA: N.A.D.1927 (FEET) N.A.V.D.1929 (FEET)

Y=_____ X=_____ EL.=_____

N.A.D.1983 (METERS) N.A.V.D.1988 (METERS)

N=_____ E=_____ EL.=_____

LAT. _____ NORTH, LONG. _____ WEST

GEOD HEIGHT _____ SCALE FACTOR _____

CONTROL STATIONS USED: _____

DESCRIBE RECORD EVIDENCE FOUND, INCLUDING TIES AND ACCESSORIES, OR IF A MONUMENT NOT OF RECORD, TELL WHY YOU ACCEPTED IT AS VALID. DESCRIBE ANY ACTIONS TAKEN BY YOU TO REHABILITATE OR PERPETUATE THIS MONUMENT IF FOUND IN PERISHABLE OR DETERIORATED CONDITION. IF NO EVIDENCE OF THE ORIGINAL MONUMENT OR ITS LOCATION CAN BE FOUND, DESCRIBE THE PROCEDURE FOLLOWED IN THE RESTORATION OF THE MONUMENT AND THE CONTROLLING CORNERS USED, INCLUDING ALL RECORD OF SURVEY REFERENCES. DESCRIBE ANY NEW MONUMENT SET (INCLUDING ACCESSORY MONUMENTS) AS TO MATERIAL, SHAPE, MARKING, PROJECTION OR BURIAL, AND DISPOSITION OF OLD MONUMENT. DESCRIBE NEW TIES AND ACCESSORIES IN COORDINATION WITH THE SKETCH ON THE REVERSE. DESCRIBE ANY CONFLICTING MONUMENTS OR EVIDENCE AND YOUR CONCLUSIONS.

TBM 5

FOUND AHD BRASS CAP ON TOP OF SOUTH HEADWALL FOR AN EXISTING CATTLE GUARD @ INTERSECTION OF HWY 179 & WILD HORSE MESA DRIVE

ESTABLISHED NEW TIES

ELEV = 3999.67 PER Y.C.F.C.D. DATA (ELEVATION NOT VERIFIED)

COUNTY FILING INFORMATION

APPLY COUNTY STICKER HERE IF APPLICABLE

FEE \$ _____

DOCKET _____ PAGE _____

_____ COUNTY, ARIZONA

DATE _____ HOUR _____

FEE: _____ PAGES _____

REQUEST OF: _____

TITLE: _____

SUBMITTED TO BE CHECKED FOR COMPLETENESS

FILED AT REQUEST OF COUNTY REVIEWER

TITLE: _____

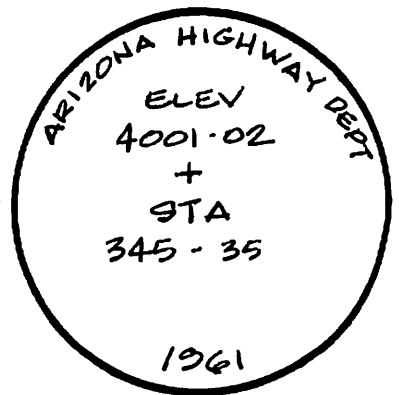
SIGNED: _____ DATE: _____

TOWNSHIP INDEX

SCALE: 1" = 10,000'

	1	2	3	4	5	6	7	8	9	10	11	12	13	14	15	16	17	18	19	20	21	22	23	24	25
A	*	*	*	*	*	*	*	*	*	*	*	*	*	*	*	*	*	*	*	*	*	*	*	*	*
B	*	*	*	*	*	*	*	*	*	*	*	*	*	*	*	*	*	*	*	*	*	*	*	*	*
C	*	*	*	*	*	*	*	*	*	*	*	*	*	*	*	*	*	*	*	*	*	*	*	*	*
D	*	*	*	*	*	*	*	*	*	*	*	*	*	*	*	*	*	*	*	*	*	*	*	*	*
E	*	*	*	*	*	*	*	*	*	*	*	*	*	*	*	*	*	*	*	*	*	*	*	*	*
F	*	*	*	*	*	*	*	*	*	*	*	*	*	*	*	*	*	*	*	*	*	*	*	*	*
G	*	*	*	*	*	*	*	*	*	*	*	*	*	*	*	*	*	*	*	*	*	*	*	*	*
H	*	*	*	*	*	*	*	*	*	*	*	*	*	*	*	*	*	*	*	*	*	*	*	*	*
I	*	*	*	*	*	*	*	*	*	*	*	*	*	*	*	*	*	*	*	*	*	*	*	*	*
J	*	*	*	*	*	*	*	*	*	*	*	*	*	*	*	*	*	*	*	*	*	*	*	*	*
K	*	*	*	*	*	*	*	*	*	*	*	*	*	*	*	*	*	*	*	*	*	*	*	*	*
L	*	*	*	*	*	*	*	*	*	*	*	*	*	*	*	*	*	*	*	*	*	*	*	*	*
M	*	*	*	*	*	*	*	*	*	*	*	*	*	*	*	*	*	*	*	*	*	*	*	*	*
N	*	*	*	*	*	*	*	*	*	*	*	*	*	*	*	*	*	*	*	*	*	*	*	*	*
O	*	*	*	*	*	*	*	*	*	*	*	*	*	*	*	*	*	*	*	*	*	*	*	*	*
P	*	*	*	*	*	*	*	*	*	*	*	*	*	*	*	*	*	*	*	*	*	*	*	*	*
Q	*	*	*	*	*	*	*	*	*	*	*	*	*	*	*	*	*	*	*	*	*	*	*	*	*
R	*	*	*	*	*	*	*	*	*	*	*	*	*	*	*	*	*	*	*	*	*	*	*	*	*
S	*	*	*	*	*	*	*	*	*	*	*	*	*	*	*	*	*	*	*	*	*	*	*	*	*
T	*	*	*	*	*	*	*	*	*	*	*	*	*	*	*	*	*	*	*	*	*	*	*	*	*
U	*	*	*	*	*	*	*	*	*	*	*	*	*	*	*	*	*	*	*	*	*	*	*	*	*
V	*	*	*	*	*	*	*	*	*	*	*	*	*	*	*	*	*	*	*	*	*	*	*	*	*
W	*	*	*	*	*	*	*	*	*	*	*	*	*	*	*	*	*	*	*	*	*	*	*	*	*
X	*	*	*	*	*	*	*	*	*	*	*	*	*	*	*	*	*	*	*	*	*	*	*	*	*
Y	*	*	*	*	*	*	*	*	*	*	*	*	*	*	*	*	*	*	*	*	*	*	*	*	*

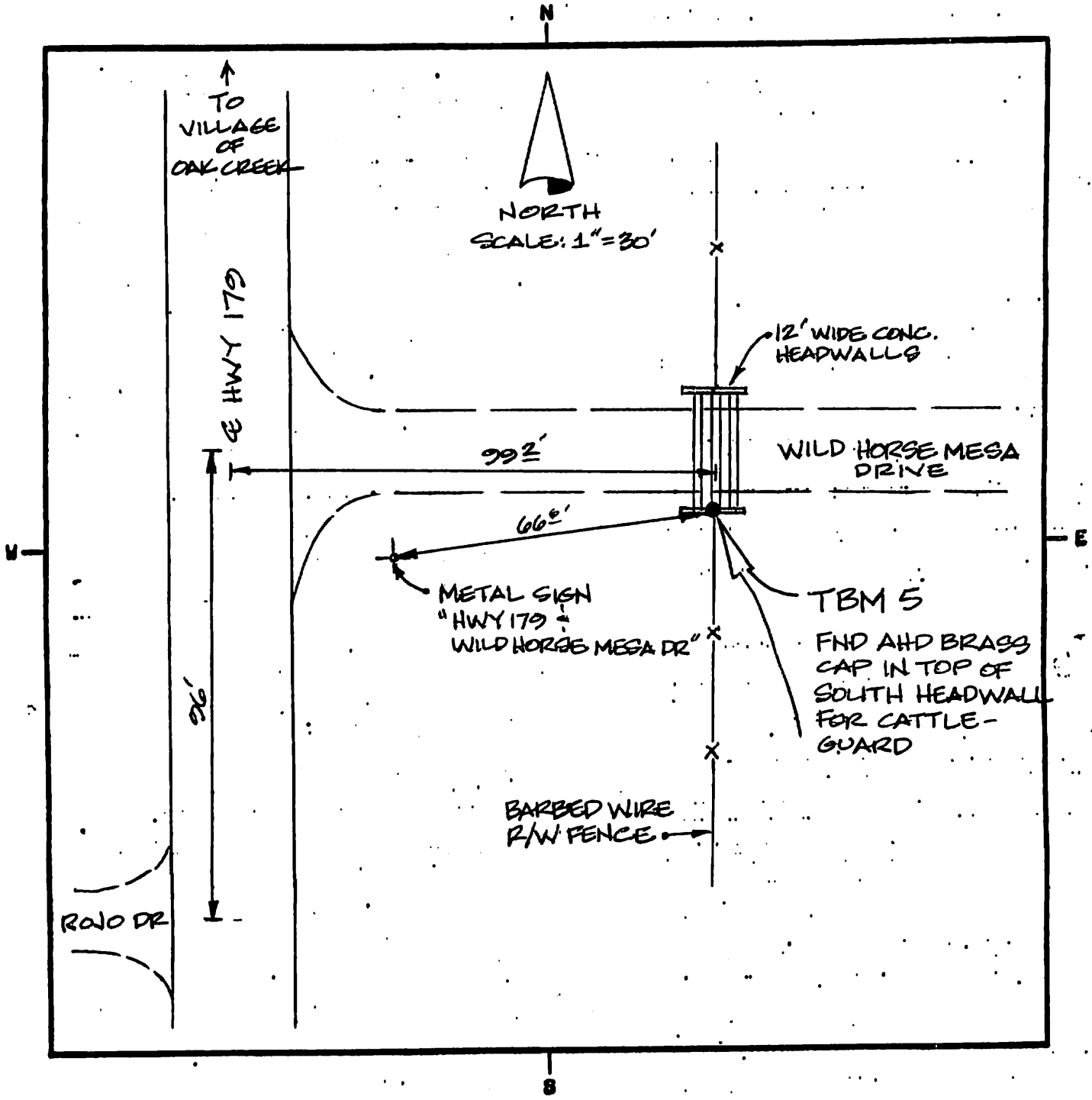
CORNER MONUMENT CAP STAMPING



FILED RECORD OF SURVEY IN COUNTY RECORDS AT _____ BOOK _____ PAGE(S) _____
 ATTACHED SHEETS: WRITTEN TESTIMONY FIELD NOTE PAGE(S) OTHER _____

(OVER)

1470



LAND SURVEYOR IDENTIFICATION AND CERTIFICATION

I, DALE W. STONE, ARIZONA R.L.S. NUMBER 12218, HEREBY CERTIFY THAT THIS CORNER RECORD WAS PREPARED UNDER MY DIRECTION, THAT ALL MONUMENTATION ACTUALLY EXISTS AS SHOWN HEREON.

COMPANY NAME DALE W. STONE RLS
 STREET ADDRESS _____
 MAILING ADDRESS PO BOX 1288
 CITY, STATE, ZIP CAMP VERDE AZ 86322
 TELEPHONE NUMBER (602) 567-5344



SIGNATURE, SEAL AND DATE