

## ELEVATION REFERENCE MONUMENT

**ERM:** 24B

**Panel:** 1490

**Elevation (NAVD88):** 4256.21

**Elevation (NGVD29):** 4253.60

**Latitude:** 34°47'08" N

**Longitude:** 111°44'02" W

**Description:** Yavapai County Flood Control District 2' diameter aluminum capped rebar in concrete near northeast corner of Canyon Ridge entrance at Jacks Canyon Road. Station is located approximately 33.4 feet north of Jacks Canyon Road centerline.

MONUMENT RECORD FORM

CORNER LOCATION INFORMATION

SECTION 17, CORNER INDEX CODE -----  
TOWNSHIP 16 NORTH, RANGE 6 EAST  
622RB MERIDIAN YAVAPAI COUNTY

CORNER TYPE:  
 ALIQUOT GOV'T COR.  NON-ALIQUOT GOV'T COR.  OTHER  
FORMAL CORNER NAME: RM 24B

NOTES FOR USING TOWNSHIP INDEX TO DETERMINE INDEX CODE

FOR ALIQUOT SECTION, QUARTER, AND SIXTEENTH CORNERS, PUT A CIRCLE AT THE CORNER LOCATION, THEN READ GRID DESIGNATION (A-1 THRU Z-25). A CORNER THAT APPLIES TO TWO OR MORE TOWNSHIPS SHOULD BE INDEXED UNDER THE TOWNSHIP NORTH OR WEST OF THE CORNER LOCATION AS INDICATED BY THE HEAVY LINE ON THE INDEX (GENERALLY THE SOUTH AND EAST LINES EXCEPT THE N.E. AND S.W. CORNERS). CLOSING CORNERS WILL BE INDEXED UNDER THE TOWNSHIP TO WHICH THEY APPLY. FOR 1/64 CORNERS AND FURTHER DIVISIONS, AND FOR NON-ALIQUOT CORNERS LYING BETWEEN GRID DESIGNATIONS OR WITHIN A GRID SQUARE ON THE INDEX, DRAW AN APPROPRIATE REFERENCE LINE OR SHAPE ON THE INDEX, THEN CIRCLE THE CORNER LOCATION AND SPECIFY THE NEAREST INDEX CODE TO THE NORTH OR WEST (IF ON A GRID LINE), OR AT THE NORTHWEST CORNER OF THE GRID BLOCK.

MONUMENT FIELD VISIT INFORMATION

DATE OF FIELD VISIT: 10/06/2003

MONUMENT:  
 LEFT AS FOUND  FOUND & TAGGED  FOUND & REBUILT  
 RESTORED LOST CORNER  ESTABLISHED NEW ACCESSORIES  
STATE PLANE COORDINATES:  ESTABLISHED TO \_\_\_\_\_ ORDER  
ZONE:  WEST  CENTRAL  EAST  NOT ESTABLISHED  
DATA:  N.A.D. 1927 (FEET)  N.A.V.D. 1929 (FEET)  
Y = \_\_\_\_\_ X = \_\_\_\_\_ EL. = \_\_\_\_\_  
 N.A.D. 1983 (METERS)  N.A.V.D. 1988 (METERS)  
N = \_\_\_\_\_ E = \_\_\_\_\_ EL. = \_\_\_\_\_  
LAT. \_\_\_\_\_ NORTH, LONG. \_\_\_\_\_ WEST  
GEOID HEIGHT \_\_\_\_\_ SCALE FACTOR \_\_\_\_\_

CONTROL STATIONS USED: RM 23A (ESTABLISHED FOR YCFCD IN FEB. 1995)

DESCRIBE RECORD EVIDENCE FOUND, INCLUDING TIES AND ACCESSORIES, OR IF A MONUMENT NOT OF RECORD, TELL WHY YOU ACCEPTED IT AS VALID. DESCRIBE ANY ACTIONS TAKEN BY YOU TO REHABILITATE OR PERPETUATE THIS MONUMENT IF FOUND IN PERISHABLE OR DETERIORATED CONDITION. IF NO EVIDENCE OF THE ORIGINAL MONUMENT OR ITS LOCATION CAN BE FOUND, DESCRIBE THE PROCEDURE FOLLOWED IN THE RESTORATION OF THE MONUMENT AND THE CONTROLLING CORNERS USED, INCLUDING ALL RECORD OF SURVEY REFERENCES. DESCRIBE ANY NEW MONUMENT SET (INCLUDING ACCESSORY MONUMENTS) AS TO MATERIAL, SHAPE, MARKING, PROJECTION OR BURIAL, AND DISPOSITION OF OLD MONUMENT. DESCRIBE NEW TIES AND ACCESSORIES IN COORDINATION WITH THE SKETCH ON THE REVERSE. DESCRIBE ANY CONFLICTING MONUMENTS OR EVIDENCE AND YOUR CONCLUSIONS.

RM 24B

SET TO REPLACE RM 24A (DISTURBED) PANEL 1490 PER Y.C.F.C.D. INSTRUCTIONS

ELEV = 4253.595

COUNTY FILING INFORMATION

APPLY COUNTY STICKER HERE IF APPLICABLE  
FEE \$ \_\_\_\_\_  
DOCKET \_\_\_\_\_ PAGE \_\_\_\_\_  
\_\_\_\_\_ COUNTY, ARIZONA  
DATE \_\_\_\_\_ HOUR \_\_\_\_\_  
FEE: \_\_\_\_\_ PAGES \_\_\_\_\_  
REQUEST OF: \_\_\_\_\_  
TITLE: \_\_\_\_\_  
 SUBMITTED TO BE CHECKED FOR COMPLETENESS  
FILED AT REQUEST OF COUNTY REVIEWER \_\_\_\_\_

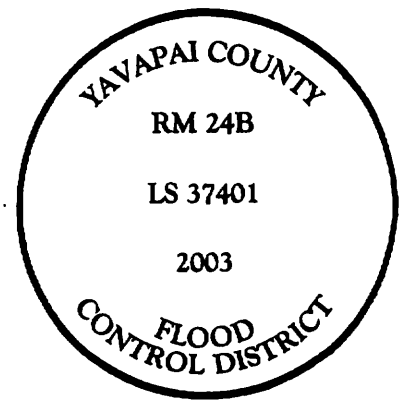
TITLE: \_\_\_\_\_  
SIGNED: \_\_\_\_\_ DATE: \_\_\_\_\_

TOWNSHIP INDEX

SCALE: 1" = 10,000'

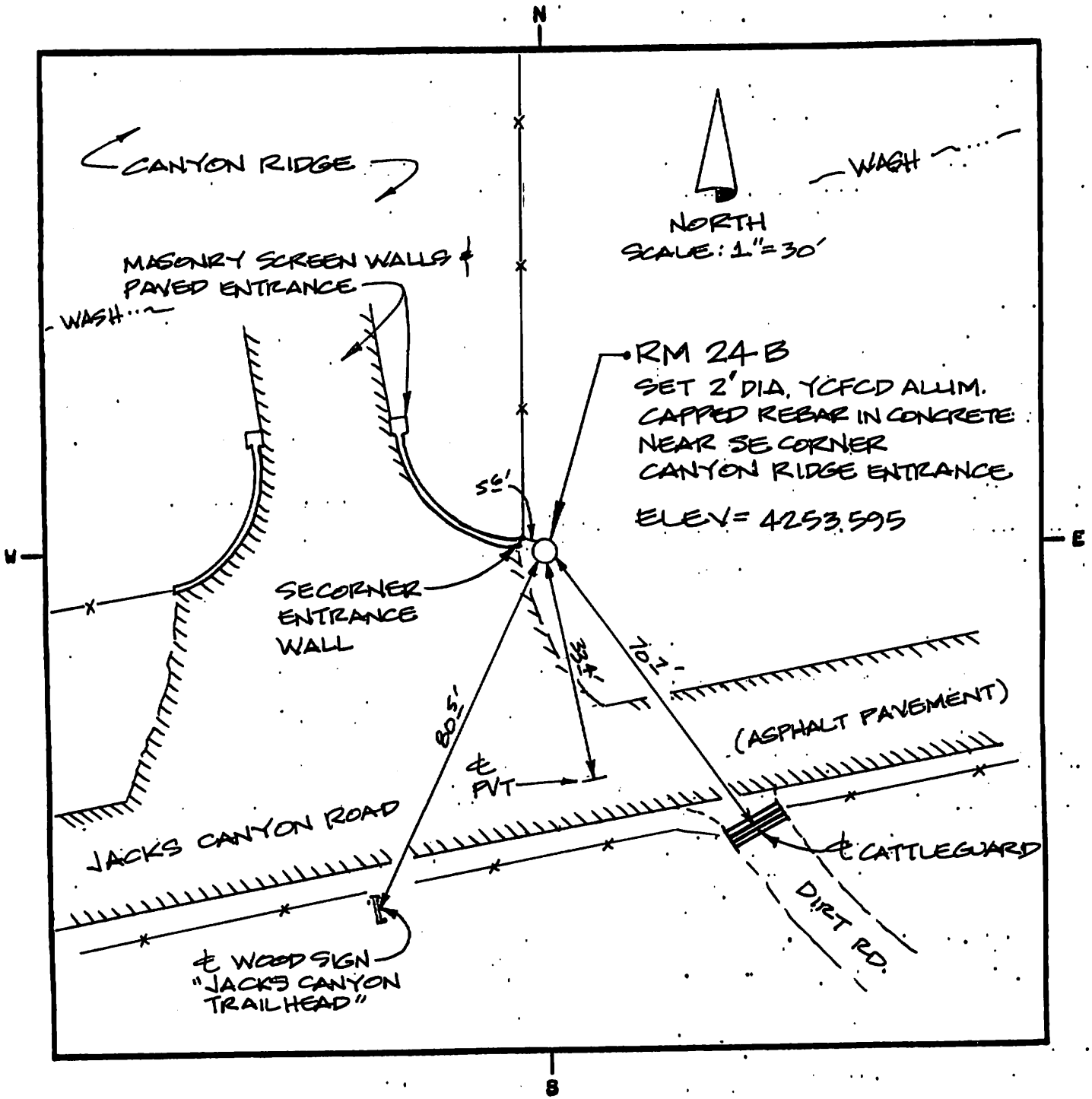
	1	2	3	4	5	6	7	8	9	10	11	12	13	14	15	16	17	18	19	20	21	22	23	24	25
A	*	*	*	*	*	*	*	*	*	*	*	*	*	*	*	*	*	*	*	*	*	*	*	*	*
B	*	*	*	*	*	*	*	*	*	*	*	*	*	*	*	*	*	*	*	*	*	*	*	*	*
C	*	*	*	*	*	*	*	*	*	*	*	*	*	*	*	*	*	*	*	*	*	*	*	*	*
D	*	*	*	*	*	*	*	*	*	*	*	*	*	*	*	*	*	*	*	*	*	*	*	*	*
E	*	*	*	*	*	*	*	*	*	*	*	*	*	*	*	*	*	*	*	*	*	*	*	*	*
F	*	*	*	*	*	*	*	*	*	*	*	*	*	*	*	*	*	*	*	*	*	*	*	*	*
G	*	*	*	*	*	*	*	*	*	*	*	*	*	*	*	*	*	*	*	*	*	*	*	*	*
H	*	*	*	*	*	*	*	*	*	*	*	*	*	*	*	*	*	*	*	*	*	*	*	*	*
I	*	*	*	*	*	*	*	*	*	*	*	*	*	*	*	*	*	*	*	*	*	*	*	*	*
J	*	*	*	*	*	*	*	*	*	*	*	*	*	*	*	*	*	*	*	*	*	*	*	*	*
K	*	*	*	*	*	*	*	*	*	*	*	*	*	*	*	*	*	*	*	*	*	*	*	*	*
L	*	*	*	*	*	*	*	*	*	*	*	*	*	*	*	*	*	*	*	*	*	*	*	*	*
M	*	*	*	*	*	*	*	*	*	*	*	*	*	*	*	*	*	*	*	*	*	*	*	*	*
N	*	*	*	*	*	*	*	*	*	*	*	*	*	*	*	*	*	*	*	*	*	*	*	*	*
O	*	*	*	*	*	*	*	*	*	*	*	*	*	*	*	*	*	*	*	*	*	*	*	*	*
P	*	*	*	*	*	*	*	*	*	*	*	*	*	*	*	*	*	*	*	*	*	*	*	*	*
Q	*	*	*	*	*	*	*	*	*	*	*	*	*	*	*	*	*	*	*	*	*	*	*	*	*
R	*	*	*	*	*	*	*	*	*	*	*	*	*	*	*	*	*	*	*	*	*	*	*	*	*
S	*	*	*	*	*	*	*	*	*	*	*	*	*	*	*	*	*	*	*	*	*	*	*	*	*
T	*	*	*	*	*	*	*	*	*	*	*	*	*	*	*	*	*	*	*	*	*	*	*	*	*
U	*	*	*	*	*	*	*	*	*	*	*	*	*	*	*	*	*	*	*	*	*	*	*	*	*
V	*	*	*	*	*	*	*	*	*	*	*	*	*	*	*	*	*	*	*	*	*	*	*	*	*
W	*	*	*	*	*	*	*	*	*	*	*	*	*	*	*	*	*	*	*	*	*	*	*	*	*
X	*	*	*	*	*	*	*	*	*	*	*	*	*	*	*	*	*	*	*	*	*	*	*	*	*
Y	*	*	*	*	*	*	*	*	*	*	*	*	*	*	*	*	*	*	*	*	*	*	*	*	*
Z	*	*	*	*	*	*	*	*	*	*	*	*	*	*	*	*	*	*	*	*	*	*	*	*	*

CORNER MONUMENT CAP STAMPING



FILED RECORD OF SURVEY IN COUNTY RECORDS AT \_\_\_\_\_ BOOK \_\_\_\_\_, PAGE(S) \_\_\_\_\_  
ATTACHED SHEETS:  WRITTEN TESTIMONY  FIELD NOTE PAGE(S) \_\_\_\_\_  OTHER \_\_\_\_\_  
(OVER)

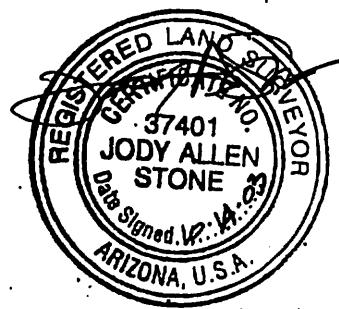
1490



**LAND SURVEYOR IDENTIFICATION AND CERTIFICATION**

I, JODY A. STONE, ARIZONA R.L.S. NUMBER 37401, HEREBY CERTIFY THAT THIS CORNER RECORD WAS PREPARED UNDER MY DIRECTION, THAT ALL MONUMENTATION ACTUALLY EXISTS AS SHOWN HEREON.

COMPANY NAME JDS ASSOCIATES LLC  
 STREET ADDRESS \_\_\_\_\_  
 MAILING ADDRESS PO BOX 3240  
 CITY, STATE, ZIP CAMP VERDE AZ 86322  
 TELEPHONE NUMBER 928.567.8543



\_\_\_\_\_  
 SIGNATURE, SEAL AND DATE