

ELEVATION REFERENCE MONUMENT

ERM: 137

Panel: 1685

Elevation (NAVD88): 4875.82

Elevation (NGVD29): 4873.06

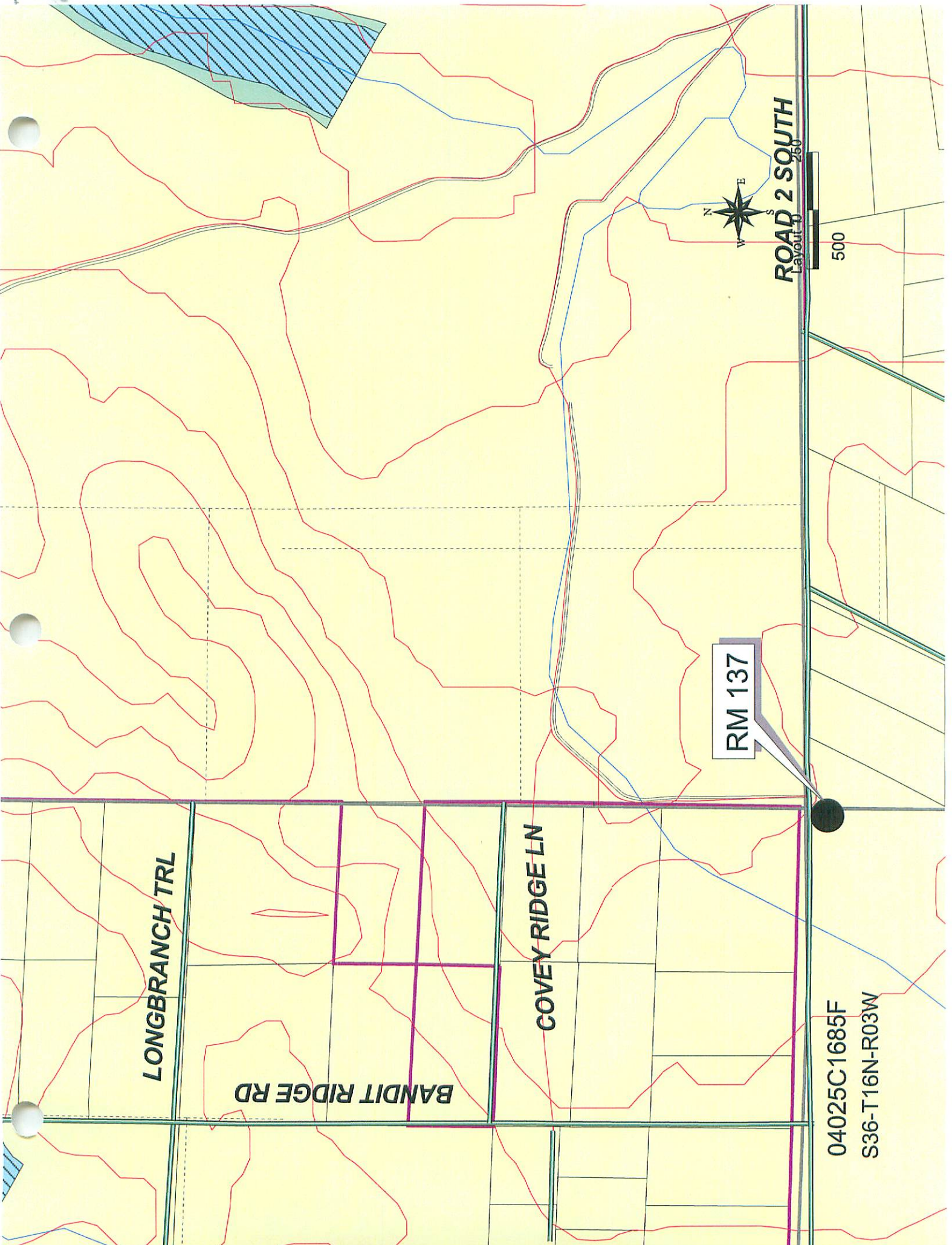
Latitude: 34°43'49"N

Longitude: 112°31'10"W

Description: General Land Office Brass Cap, approximately 50' south Road 2 South and approximately 1 mile west of intersection of Road 2 South and Yuma Drive

West Chino Valley Floodplain Delineation Restudy
 Technical Data Notebook, 2008

Pt #	NAD83(1992) Latitude Longitude	NAD83(1992) Northing Easting	NAVD88 Elevation	NGVD29 Elevation	Description
137	N 34°43'49.45986" W 112°31'09.82754"	1357724.118 518908.134	4875.822	4873.056	General Land Office Brass Cap, approximately 50' south Road 2 South and Yuma Drive and approximately 1 mile west of intersection of Road 2 South and Yuma Drive
138	N 34°43'51.37955" W 112°32'15.46381"	1357951.512 513431.313	5054.462	5051.657	Brass Cap stamped "PE 2398 WJ", approximately 50 north of Road 2 South, approximately 2 miles west of intersection of Road 2 South and Yuma Drive
154	N 34°42'59.06308" W 112°27'54.59126"	1352536.141 535174.781	4899.588	4896.845	Brass Cap flush with pavement at intersection of Road 2 West and Outer Loop Road
157	N 34°42'58.41429" W 112°29'00.03257"	1352500.831 529711.762	4912.749	4910.003	General Land Office Brass Cap, approximately 50 feet southwesterly of intersection of Reed Road and Road 2 South
158	N 34°42'57.77625" W 112°30'05.49782"	1352467.606 524246.721	4904.471	4901.718	General Land Office Brass Cap, at intersection of Russland Road and Yuma Drive extended south, approximately 2000 feet east of Table Mountain Road
159	N 34°42'57.08311" W 112°31'09.75203"	1352429.192 518882.708	5215.993	5213.208	General Land Office Brass Cap at intersection of Cowboy Trail extended north and Russland Road extended west, approximately 1950 feet west of intersection of Meadow Lake Drive and Russland Road
160	N 34°42'57.75212" W 112°32'16.17134"	1352530.548 513338.783	5098.175	5095.357	Brass Cap stamped "CHEEK PE 2398" along Dome Road extended east, approximately 3000 feet east of intersection of Dome Road and Williamson Valley Road
161	N 34°42'04.22722" W 112°32'12.43480"	1347117.674 513617.341	5107.477	5104.649	Brass Cap stamped "FAMAS RLS 12005", approximately 400 feet southeast of Williamson Valley Ranch Road, approximately 800 feet south of intersection of Running Iron Drive and Williamson Valley Ranch Road
162	N 34°42'04.70096" W 112°31'08.52320"	1347133.157 518953.583	5003.009	5000.204	Brass Cap stamped "FAMAS RLS 12005", approximately 50 west of Cowboy Trail.



LONGBRANCH TRL

BANDIT RIDGE RD

COVEY RIDGE LN

RM 137

ROAD 2 SOUTH
Layout 0 250

04025C1685F
S36-T16N-R03W

500