

## ELEVATION REFERENCE MONUMENT

**ERM:** 78A  
**Panel:** 1705

**Elevation (NAVD88):** 4812.91  
**Elevation (NGVD29):** 4810.19

**Latitude:** 34°43'51" N  
**Longitude:** 112°29'33" W

**Description:** 2" diameter Yavapai County Flood Control District aluminum cap set in a concrete base on the south side of Road 2 South near a found GLO Brass Cap monumenting the 1/4 corner common to Sections 29 & 32 T16N-R2W. Station is approximately 2700 feet westerly from the intersection of Road 2 South & Reed Road.

ARIZONA LAND SURVEY CORNER RECORD

MONUMENT FIELD VISIT INFORMATION

INDEX CODE

DATE OF FIELD VISIT AUG 26, 2008 MONUMENT ACCEPTED AS MARKING CORNER LOCATION:

- LEFT AS FOUND, FOUND & TAGGED, FOUND & REBUILT, RESTORED LOST CORNER, RESTORED OBLITERATED CORNER, ESTABLISHED NEW ACCESSORIES

GLO/BLM NOTES REC. & REF.

ARIZONA STATE PLANE COORDINATE SYSTEM: ESTABLISHED TO ORDER, CLASS

ZONE: WEST, CENTRAL, EAST QUADRANGLE DESIGNATION #

- N.A.D. 1927 (FEET), N.A.D. 1983 (METERS), W.G.S. 1984 (METERS)

- N.A.V.D. 1929 (FEET), N.A.V.D. 1988 (METERS), GEOOID HEIGHT

N. (OR) Y= E. (OR) X= ELEVATION 4810.19 NGVD 29 DATUM

LATITUDE N34°43'50.99" LONGITUDE W112°29'32.67" GRID FACTOR 4812.91 NAVD 88 DATUM

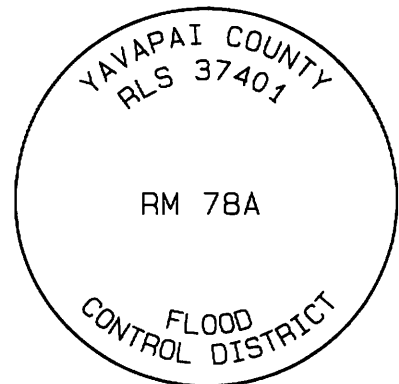
CONTROL STATIONS USED: RM 7

DESCRIBE ALL EVIDENCE FOUND, INCLUDING TIES AND ACCESSORIES TO COMPLY WITH ARIZONA REVISED STATUTE TITLE 33, SECTION 106:

RM 78A ~ SET 2" DIAMETER Y.C.F.C.D. ALUMINUM CAP IN A CONCRETE BASE ON THE SOUTH SIDE OF ROAD 2 SOUTH NEAR A FOUND G.L.O. BRASS CAP MONUMENTING THE 1/4 CORNER COMMON TO SECTIONS 29 & 32 T16N-R2W. RM 78A WAS SET TO REPLACE RM 78 (LOCATION NOT DETERMINED).

RM 78A ELEVATION = 4810.19 NGVD 29 DATUM PER GPS RTK OBSERVATION. 4812.91 NAVD 88 DATUM PER VERTCON CONVERSION

CORNER MONUMENT CAP STAMPING



CORNER LOCATION INFORMATION

TOWNSHIP 16 NORTH RANGE 2 WEST

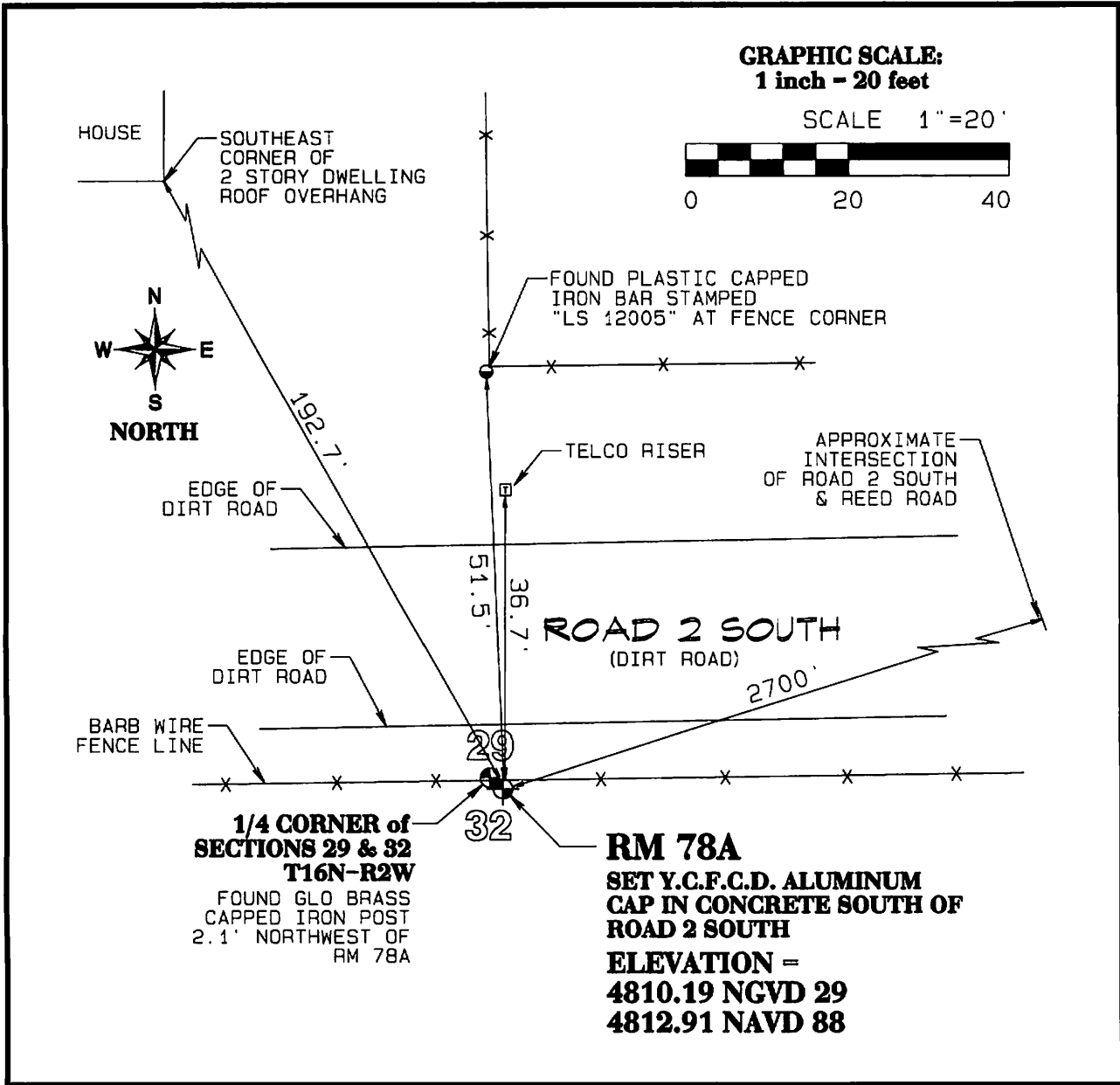
SECTION 32 CORNER INDEX CODE V-7

G&SRB& MERIDIAN YAVAPAI COUNTY

FORMAL CORNER NAME: RM 78A

- ALIQUOT GOV'T COR., NON-ALIQUOT GOV'T COR., OTHER

N



S

**LAND SURVEYOR IDENTIFICATION AND CERTIFICATION**

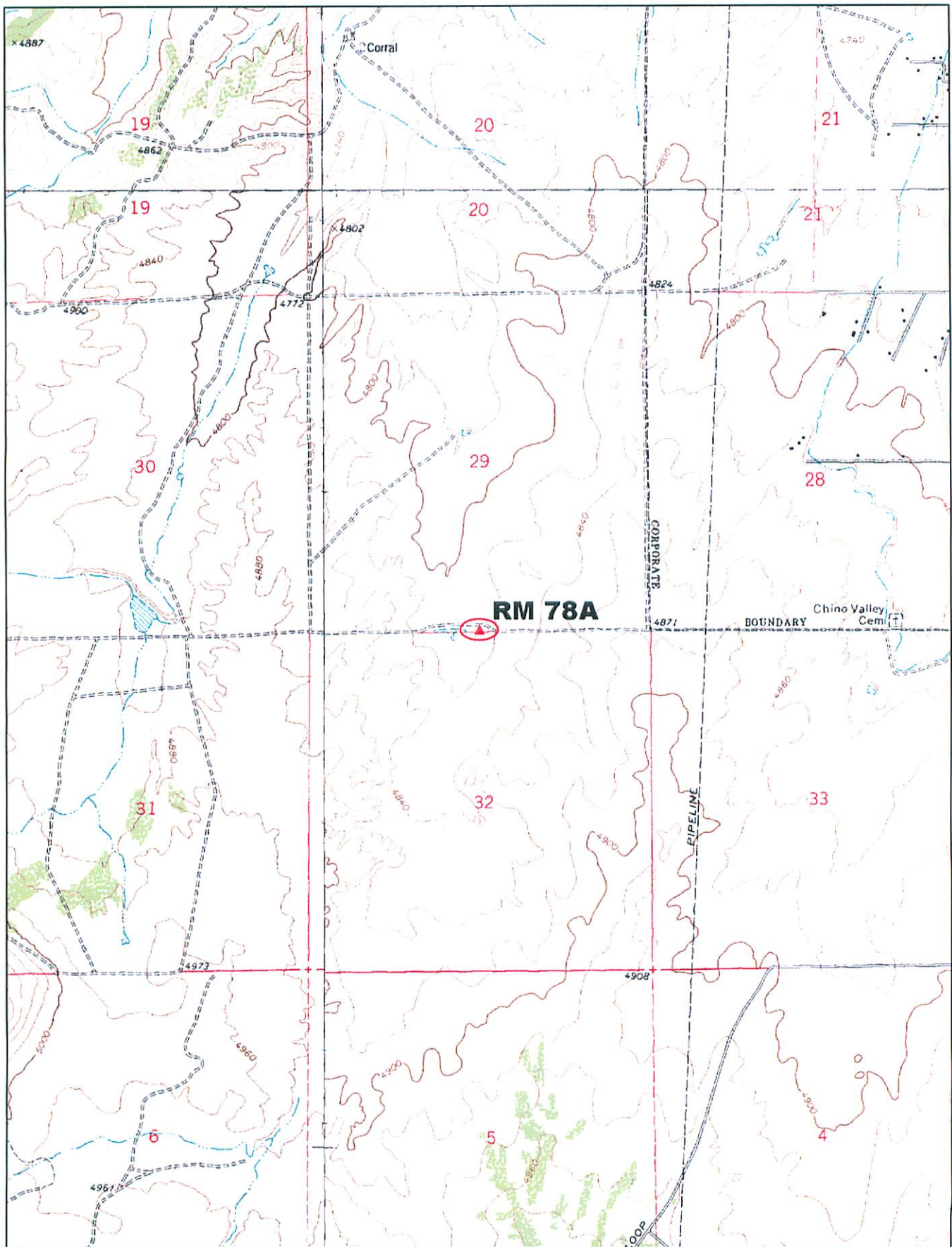
I, JODY A. STONE, ARIZONA R.L.S. NUMBER 37401, HEREBY CERTIFY THAT THIS CORNER RECORD WAS PREPARED UNDER MY DIRECTION, THAT ALL MONUMENTATION ACTUALLY EXISTS AS SHOWN HEREON.

COMPANY NAME JDS ASSOCIATES, L.L.C.  
 STREET ADDRESS \_\_\_\_\_  
 MAILING ADDRESS PO Box 3240  
 CITY, STATE, ZIP CAMP VERDE AZ 86322  
 TELEPHONE NUMBER (928) 567-8543



*Jody A. Stone*

SIGNATURE, SEAL AND DATE



© 2002 DeLorme. 3-D TopoQuads®. Data copyright of content owner.  
www.delorme.com

Scale 1 : 25,000  
1" = 2080 ft

