

**YAVAPAI COUNTY FLOOD CONTROL DISTRICT  
REFERENCE MONUMENT RECORD  
SITUATED IN SECTION 11, TOWNSHIP 10 NORTH, RANGE 5 WEST  
GILA AND SALT RIVER MERIDIAN, YAVAPAI COUNTY, ARIZONA**

ERM #172R  
(REPLACES ERM #172)

DESCRIPTION: THE POINT IS A YAVAPAI COUNTY FLOOD CONTROL DISTRICT ALUMINUM CAP AND REBAR LOCATED AT THE NORTHWEST CORNER OF THE INTERSECTION OF WEST SHRINE DRIVE AND HACKBERRY STREET. IN YARNELL, AZ. MONUMENT IS STAMPED "YCFCD BM 172R RLS 33861"

WGS84 POSITION

LATITUDE: 34°13'26.63404"N  
LONGITUDE: 112°44'54.36124"W  
HEIGHT: 4654.8371 IFT

NAD83/NAVD88 AZ SP POSITION

NORTHING: 1173945.236 IFT  
EASTING: 448577.418 IFT  
ELEVATION: 4747.410(88) IFT  
SUPERSEDED: BM 172

NGS SOURCE POINT(R 18)

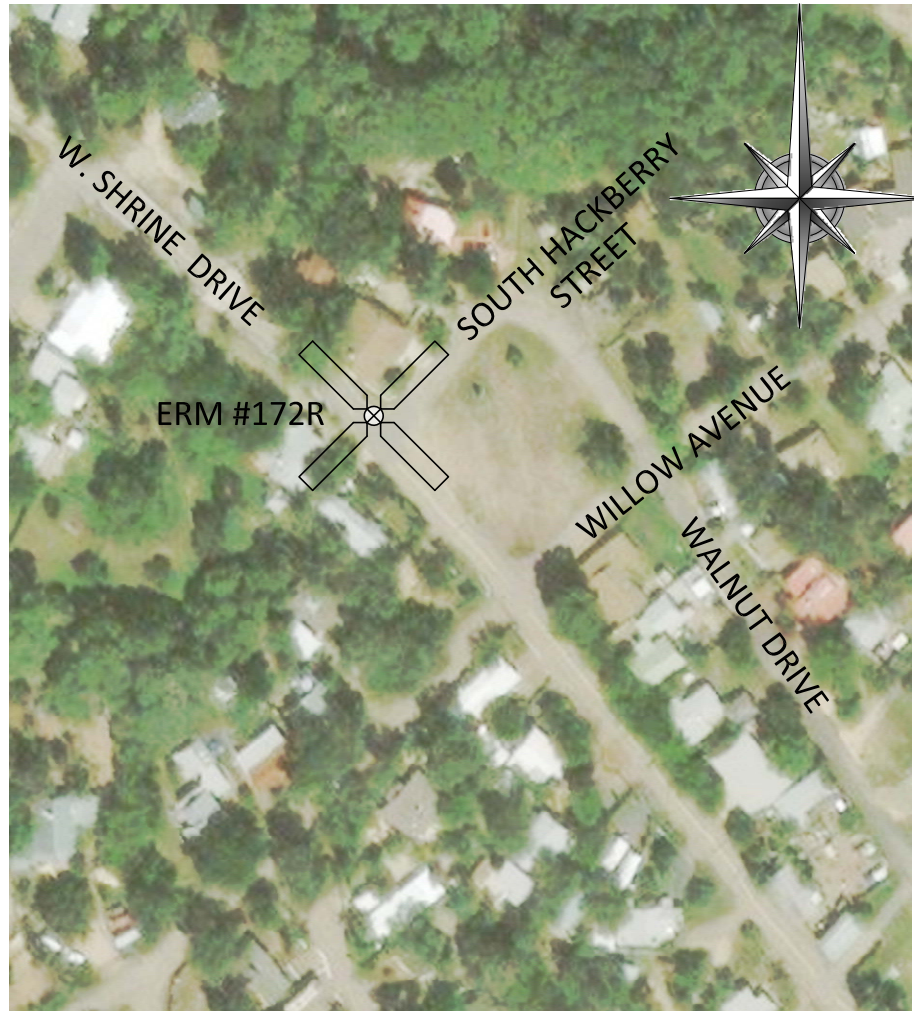
DESCRIPTION: A STANDARD USGS TABLET STAMPED PEEPLES 1969 CEMENTED ET0950'IN A LARGE BOULDER. TO REACH FROM THE POST OFFICE AT YARNELL GO NE. ALONG U.S. HIGHWAY 89 FOR 7.9 MI. TO HIGHWAY CUT. STATION IS ABOUT 75 FT. S. OF CUT ON RIDGE.

WGS84 POSITION

LATITUDE: 34°19'38.92414"N  
LONGITUDE: 112°41'44.77635"W  
HEIGHT: 4381.739 IFT

NAD83/NAVD88 AZ SP POSITION

NORTHING: 1211452.60 IFT  
EASTING: 464784.62 IFT  
ELEVATION: 4472.83(88) IFT

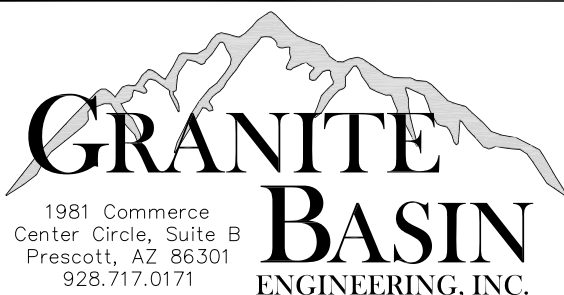
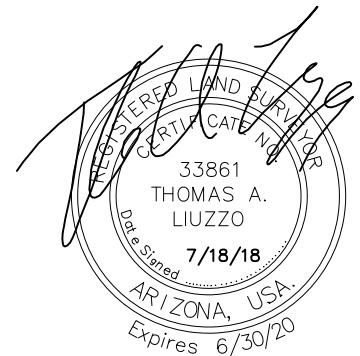


REFERENCE MARK NOTE

THE MARK IS CLASSIFIED AS A STABILITY TYPE "C". MAY HOLD BUT OF A TYPE COMMONLY SUBJECT TO GROUND MOVEMENT.

USGS QUADRANGLE: YARNELL

FIRM PANEL: 04025C3105G  
PANEL NUMBER 3105 OF 3900



**YAVAPAI COUNTY FLOOD CONTROL  
DISTRICT  
REFERENCE MONUMENT RECORD  
ERM #172R**

PREPARED FOR: YAVAPAI COUNTY FLOOD CONTROL DISTRICT 1120 COMMERCE DRIVE PRESCOTT, AZ 86305	GBE JOB #:17106-02	BY: DJP
	DATE: JULY 2018	SCALE: 1"=150'