

## ELEVATION REFERENCE MONUMENT

**ERM:** 271

**Panel:** 1805

**Elevation (NAVD88):** 3277.72

**Elevation (NGVD29):** 3275.30

**Latitude:** 34°43'17" N

**Longitude:** 111°59'25" W

**Description:** Arizona Department of Transportation aluminum cap in top of concrete wall of bridge (Highway 89A) over the Verde River of Section 1, Township 15 north, Range 3 East.

Veele Village 1805

NATIONAL FLOOD INSURANCE PROGRAM

**FIRM**  **ORIGINAL**  
FLOOD INSURANCE RATE MAP

YAVAPAI COUNTY,  
ARIZONA AND  
INCORPORATED AREAS

PANEL 1805 OF 3925

(SEE MAP INDEX FOR PANELS NOT PRINTED)

CONTAINS:  
COMMUNITY

<u>COMMUNITY</u>	<u>NUMBER</u>	<u>PANEL</u>	<u>SUFFIX</u>
COTTONWOOD, CITY OF	040096	1805	F
YAVAPAI COUNTY, UNINCORPORATED AREAS	040093	1805	F

MAP NUMBER  
04025C1805 F

EFFECTIVE DATE:  
JUNE 6, 2001



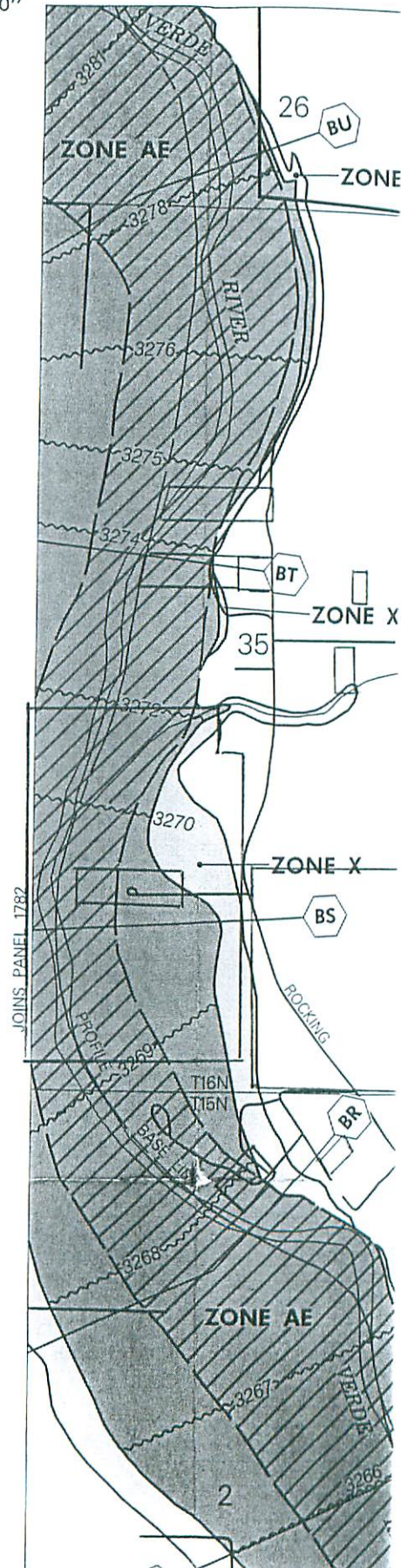
Federal Emergency Management Agency

East of Cottonwood

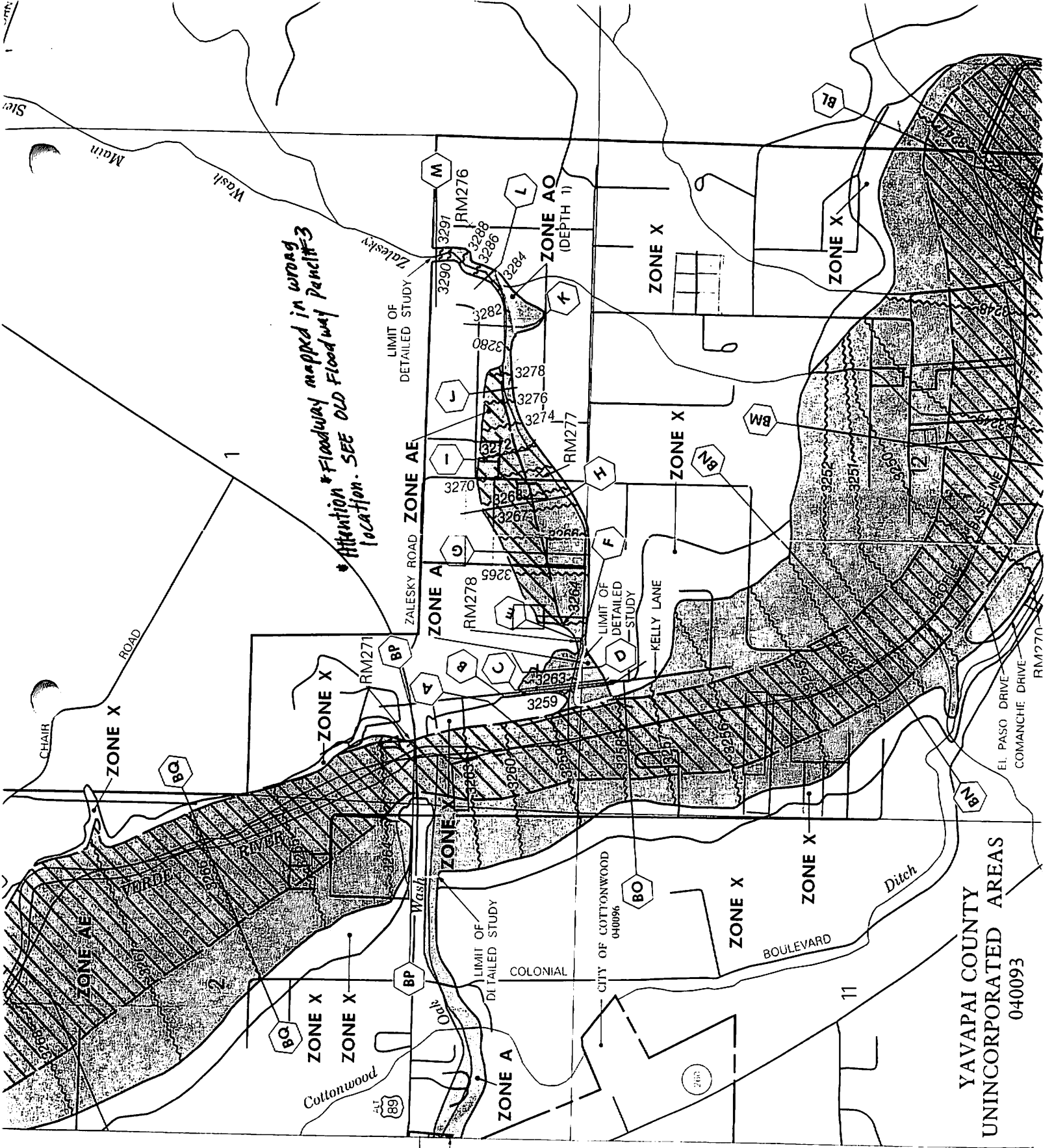
112°00'00"  
34°45'00"

ELEVATION REFERENCE MARKS  
REFERENCE ELEVATION  
MARK (FEET NGVD) DESCRIPTION OF LOCATION

1	RM269	3441.59	Aerial Mapping Company 1/2-inch rebar with aluminum cap flush with premark, approximately 250 feet west-northwest of dirt road, approximately 22 feet west and 15 feet north of southeast edge of small hill, approximately 1,350 feet east and 1,300 feet north of the southeast corner, Section 17, T15N, R5E.
	RM270	3250.16	Mark is set Yavapai County Flood Control District aluminum capped rebar in the centerline of Comanche Drive in Section 12, Township 15 north, Range 3 east.
	RM271	3275.30	Arizona Department of Transportation aluminum cap in top of concrete wall of bridge (Highway 89A) over the Verde River of Section 1, Township 15 north, Range 3 East.
	RM274	3246.06	Aerial Mapping Company 1/2-inch rebar with aluminum cap stamped VR-BM 114", at the southwest quadrant of the intersection of River Run Drive and Kachina Drive at the base of the Street Sign and opposite mobile home Lot No. 149, approximately 1,700 feet west and approximately 1,700 feet south of the northeast corner of Section 18, T15N, R4E.
2	<del>RM275</del> 852	3214.26	Aerial Mapping Company chiseled box in top of concrete gate structure below pump on south side of Verde River on approximate south project of Kachina Drive, approximately 0.5 mile south of River Run Drive, approximately 1,000 feet west and approximately 1,000 feet north of the southeast corner of Section 18, T15N, R4E.
	RM276	3296.50	From the east end of the Verde River Bridge at bridge port, go east on Zalesky Road approximately 1 mile to Trails End Street to the north. Station is located approximately 1,000 feet north of Zalesky Road in the centerline of Trails End Drive. Station is a copper weld rod.
	Reset 4/02 RM 277A	<del>3261.38</del> 3259.815	From the bridge over the Verde River at bridge port, go south on Kalli Lane approximately 1/4 mile to the Zalesky Wash bridge. Station is located near the center of the bridge. Station is a cut box in the cement bridge deck.
	Reset 4/02 RM 278A	<del>3269.42</del> 3267.13	From the bridge over the Verde River at bridge port, from Alternate U.S. Highway 89, go east on Zalesky Road to Zalesky Wash. Station is located in the bottom of the wash at the centerline of Zalesky (Charlaise) Drive. Station is a copper weld rod.



center of the  
a cut box in  
k.  
er the Verde  
port, go east  
y 89, go east  
Zalesky Wash.  
the bottom of  
centerline of  
river. Station



*Attention Floodway mapped in wrong location. SEE OLD Floodway Plan #3*

*SEE UVX TOPO  
Drainage*

YAVAPAI COUNTY  
UNINCORPORATED AREAS  
040093