

## ELEVATION REFERENCE MONUMENT

**ERM:** 277A

**Panel:** 1805

**Elevation (NAVD88):** 3262.24

**Elevation (NGVD29):** 3259.82

**Latitude:** 34°43'05" N

**Longitude:** 111°59'19" W

**Description:** Top of chiseled "+" on top of NW corner of concrete at large CMP crossing at Zalesky Wash & Kelli Lane.

MONUMENT RECORD FORM

CORNER LOCATION INFORMATION

SECTION 1, CORNER INDEX CODE \_\_\_\_\_  
 TOWNSHIP 15 NORTH, RANGE 3 EAST  
60SRB MERIDIAN YAVAPAI COUNTY  
 CORNER TYPE:  
 ALIQUOT GOV'T COR.  NON-ALIQUOT GOV'T COR.  OTHER  
 FORMAL CORNER NAME: RM 277A

COUNTY FILING INFORMATION

APPLY COUNTY STICKER HERE IF APPLICABLE  
 FEE # \_\_\_\_\_  
 DOCKET \_\_\_\_\_ PAGE \_\_\_\_\_  
 \_\_\_\_\_ COUNTY, ARIZONA  
 DATE \_\_\_\_\_ HOUR \_\_\_\_\_  
 FEE: \_\_\_\_\_ PAGES \_\_\_\_\_  
 REQUEST OF: \_\_\_\_\_  
 TITLE: \_\_\_\_\_  
 SUBMITTED TO BE CHECKED FOR COMPLETENESS  
 FILED AT REQUEST OF COUNTY REVIEWER  
 TITLE: \_\_\_\_\_  
 SIGNED: \_\_\_\_\_ DATE: \_\_\_\_\_

NOTES FOR USING TOWNSHIP INDEX TO DETERMINE INDEX CODE  
 FOR ALIQUOT SECTION, QUARTER, AND SIXTEENTH CORNERS, PUT  
 A CIRCLE AT THE CORNER LOCATION, THEN READ GRID DESIG-  
 NATION (A-1 THRU Z-25). A CORNER THAT APPLIES TO TWO  
 OR MORE TOWNSHIPS SHOULD BE INDEXED UNDER THE TOWNSHIP  
 NORTH OR WEST OF THE CORNER LOCATION AS INDICATED BY  
 THE HEAVY LINE ON THE INDEX (GENERALLY THE SOUTH AND  
 EAST LINES EXCEPT THE N.E. AND S.W. CORNERS). CLOSING  
 CORNERS WILL BE INDEXED UNDER THE TOWNSHIP TO WHICH THEY  
 APPLY. FOR 1/64 CORNERS AND FURTHER DIVISIONS, AND  
 FOR NON-ALIQUOT CORNERS LYING BETWEEN GRID DESIGNATIONS  
 OR WITHIN A GRID SQUARE ON THE INDEX, DRAW AN APPROPRIATE  
 REFERENCE LINE OR SHAPE ON THE INDEX, THEN CIRCLE THE  
 CORNER LOCATION AND SPECIFY THE NEAREST INDEX CODE TO  
 THE NORTH OR WEST (IF ON A GRID LINE), OR AT THE  
 NORTHWEST CORNER OF THE GRID BLOCK.

TOWNSHIP INDEX

SCALE: 1" = 10,000'

	1	2	3	4	5	6	7	8	9	10	11	12	13	14	15	16	17	18	19	20	21	22	23	24	25
A																									
B																									
C																									
D																									
E																									
F																									
G																									
H																									
I																									
J																									
K																									
L																									
M																									
N																									
O																									
P																									
Q																									
R																									
S																									
T																									
U																									
V																									
W																									
X																									
Y																									
Z																									

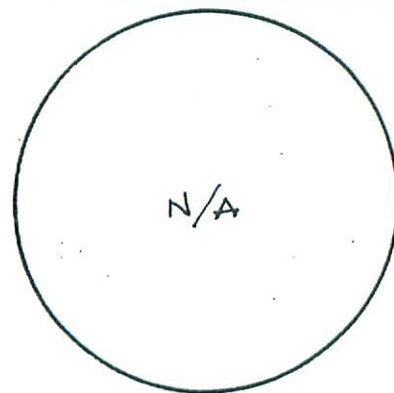
MONUMENT FIELD VISIT INFORMATION

DATE OF FIELD VISIT: APRIL 2, 2002  
 MONUMENT:  
 LEFT AS FOUND  FOUND & TAGGED  FOUND & REBUILT  
 RESTORED LOST CORNER  ESTABLISHED NEW ACCESSORIES  
 STATE PLANE COORDINATES:  ESTABLISHED TO \_\_\_\_\_ ORDER  
 NE:  WEST  CENTRAL  EAST  NOT ESTABLISHED  
 TA:  N.A.D.1927 (FEET)  N.A.V.D.1929 (FEET)  
 X= \_\_\_\_\_ EL.= \_\_\_\_\_  
 N.A.D.1983 (METERS)  N.A.V.D.1988 (METERS)  
 N= \_\_\_\_\_ E= \_\_\_\_\_ EL.= \_\_\_\_\_  
 LAT. \_\_\_\_\_ NORTH, LONG. \_\_\_\_\_ WEST  
 GEOID HEIGHT \_\_\_\_\_ SCALE FACTOR \_\_\_\_\_

CONTROL STATIONS USED: RM 271 PER FIRM PANEL  
1805 OF 3925

DESCRIBE RECORD EVIDENCE FOUND, INCLUDING TIES AND ACCESSORIES, OR IF A  
 MONUMENT NOT OF RECORD, TELL WHY YOU ACCEPTED IT AS VALID. DESCRIBE ANY  
 ACTIONS TAKEN BY YOU TO REHABILITATE OR PERPETUATE THIS MONUMENT IF  
 FOUND IN PERISHABLE OR DETERIORATED CONDITION. IF NO EVIDENCE OF THE  
 ORIGINAL MONUMENT OR ITS LOCATION CAN BE FOUND, DESCRIBE THE PROCEDURE  
 FOLLOWED IN THE RESTORATION OF THE MONUMENT AND THE CONTROLLING CORNERS  
 USED, INCLUDING ALL RECORD OF SURVEY REFERENCES. DESCRIBE ANY NEW MONU-  
 MENT SET (INCLUDING ACCESSORY MONUMENTS) AS TO MATERIAL, SHAPE, MARKING,  
 PROJECTION OR BURIAL, AND DISPOSITION OF OLD MONUMENT. DESCRIBE NEW  
 TIES AND ACCESSORIES IN COORDINATION WITH THE SKETCH ON THE REVERSE.  
 DESCRIBE ANY CONFLICTING MONUMENTS OR EVIDENCE AND YOUR CONCLUSIONS.

CORNER MONUMENT CAP STAMPING



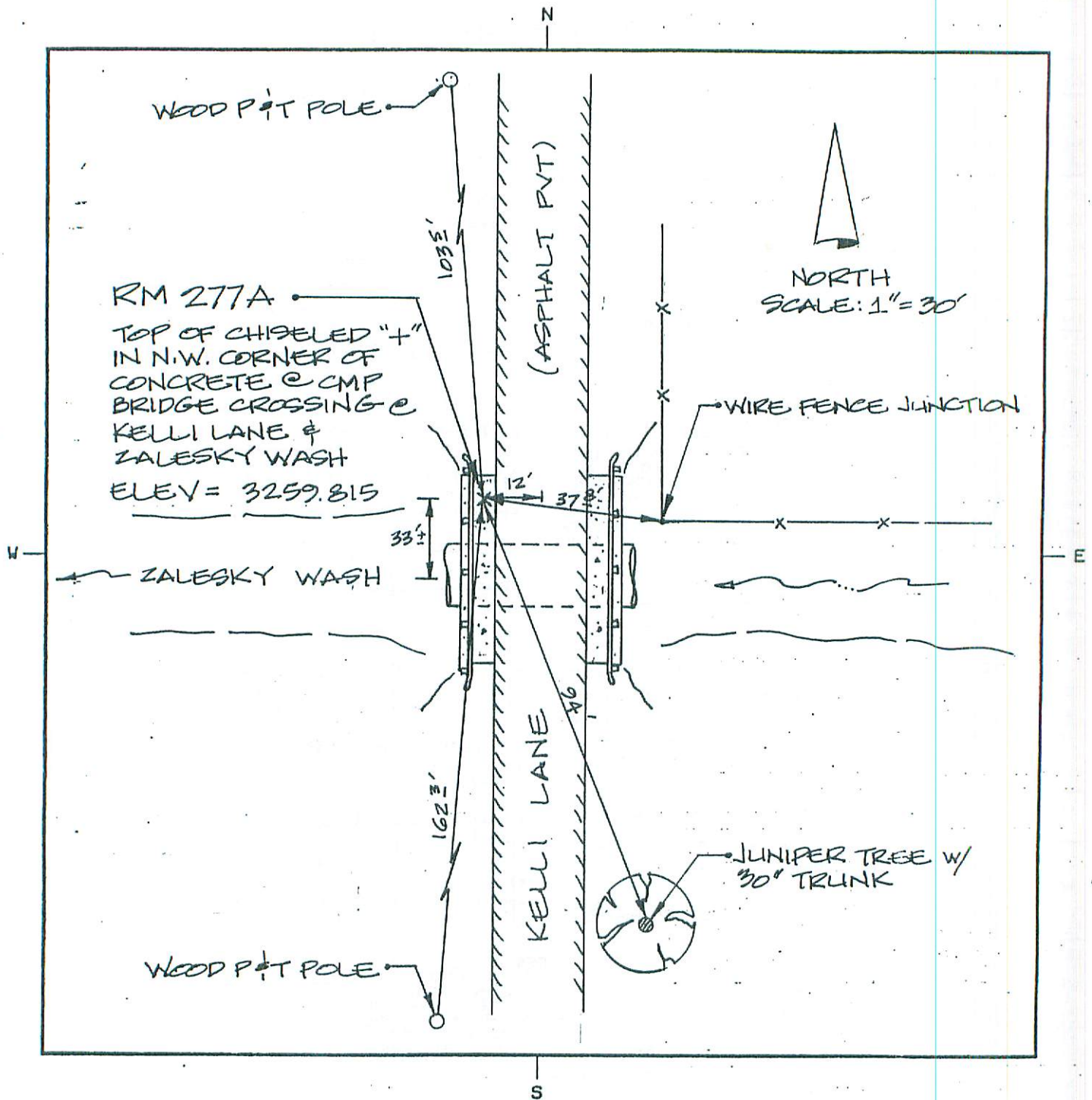
RM 277A

TOP OF CHISELED "+" ON TOP OF NW CORNER  
OF CONCRETE @ LARGE CMP CROSSING @  
ZALESKY WASH & KELLI LANE.

ELEVATION = 3259.815

FILED RECORD OF SURVEY IN COUNTY RECORDS AT \_\_\_\_\_ BOOK \_\_\_\_\_, PAGE(S) \_\_\_\_\_  
 ATTACHED SHEETS:  WRITTEN TESTIMONY  FIELD NOTE PAGE(S)  OTHER \_\_\_\_\_

(OVER)



LAND SURVEYOR IDENTIFICATION AND CERTIFICATION

I, JODY A STONE, ARIZONA R.L.S. NUMBER 37401, HEREBY CERTIFY THAT THIS CORNER RECORD WAS PREPARED UNDER MY DIRECTION, THAT ALL MONUMENTATION ACTUALLY EXISTS AS SHOWN HEREON.

COMPANY NAME JDS ASSOCIATES, LLC  
 STREET ADDRESS \_\_\_\_\_  
 MAILING ADDRESS PO BOX 3240  
 CITY, STATE, ZIP CAMP VERDE, AZ 86322  
 TELEPHONE NUMBER 928.567.8543



X \_\_\_\_\_  
 SIGNATURE, SEAL AND DATE