

ELEVATION REFERENCE MONUMENT

ERM: 288

Panel: 2090

Elevation (NAVD88): 5525.70

Elevation (NGVD29): 5522.64

Latitude: 34°32'48" N

Longitude: 112°29'58" W

Description: Station is an aluminum cap on a 1/2-inch rebar off of Idylwild Drive. To reach this station from the intersection of Idylwild Drive and Lindburg in West Prescott, go 100 feet west of the fence around the house on the northeast corner of the intersection and 15 feet north of the street right-of-way fence.

2090

NATIONAL FLOOD INSURANCE PROGRAM

ORIGINAL

**FIRM
FLOOD INSURANCE RATE MAP**

**YAVAPAI COUNTY,
ARIZONA AND
INCORPORATED AREAS**

PANEL 2090 OF 3925

(SEE MAP INDEX FOR PANELS NOT PRINTED)

CONTAINS:
COMMUNITY

<u>COMMUNITY</u>	<u>NUMBER</u>	<u>PANEL</u>	<u>SUFFIX</u>
PRESCOTT CITY OF YAVAPAI COUNTY	040098	2090	F
UNINCORPORATED AREAS	040093	2090	F

**MAP NUMBER
04025C2090 F**

**EFFECTIVE DATE:
JUNE 6, 2001**



Federal Emergency Management Agency

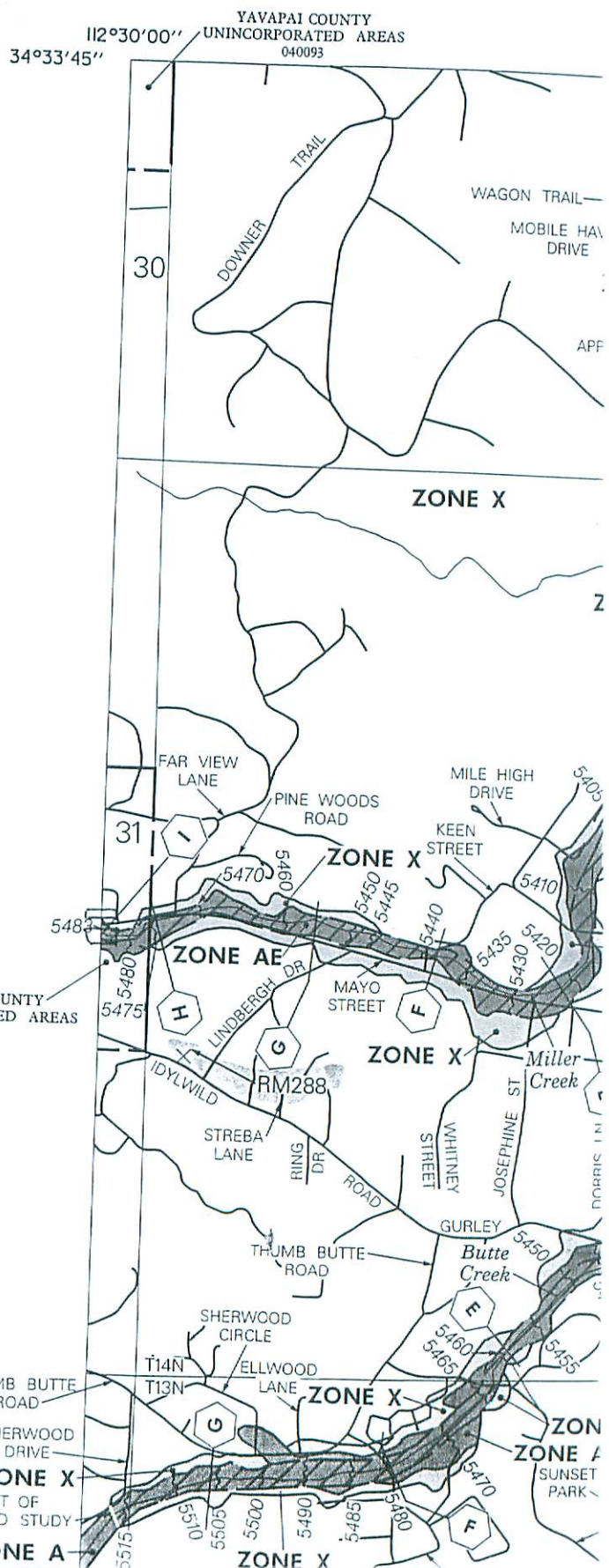
2W

A

B

REFERENCE MARK	ELEVATION (FEET NGVD)	DESCRIPTION OF LOCATION
RM140	5474.19	Aerial Mapping Company chiseled square with PK nail on concrete ford at center of south side, approximately 600 feet south and 1,600 feet west of approximate northeast corner Section 8, T13N, R2W.
RM253	5354.05	Yavapai County Court House at the south end of the base of the Bucky O Neil Statue, cap encased in concrete.
RM254	5368.19	U.S. Postal Office facing Goodwin Street at the top of the steps and to the right, cap embedded in concrete.
RM288	5522.64	To reach this station from the intersection of Idylwild Drive and Lindburg in West Prescott, go 100 feet west of the fence around the house on the northeast corner of the intersection and 15 feet north of the street right-of-way fence. This station is an aluminum cap on a 1/2-inch rebar off the end of <u>Gurley Street</u> .

Idylwild

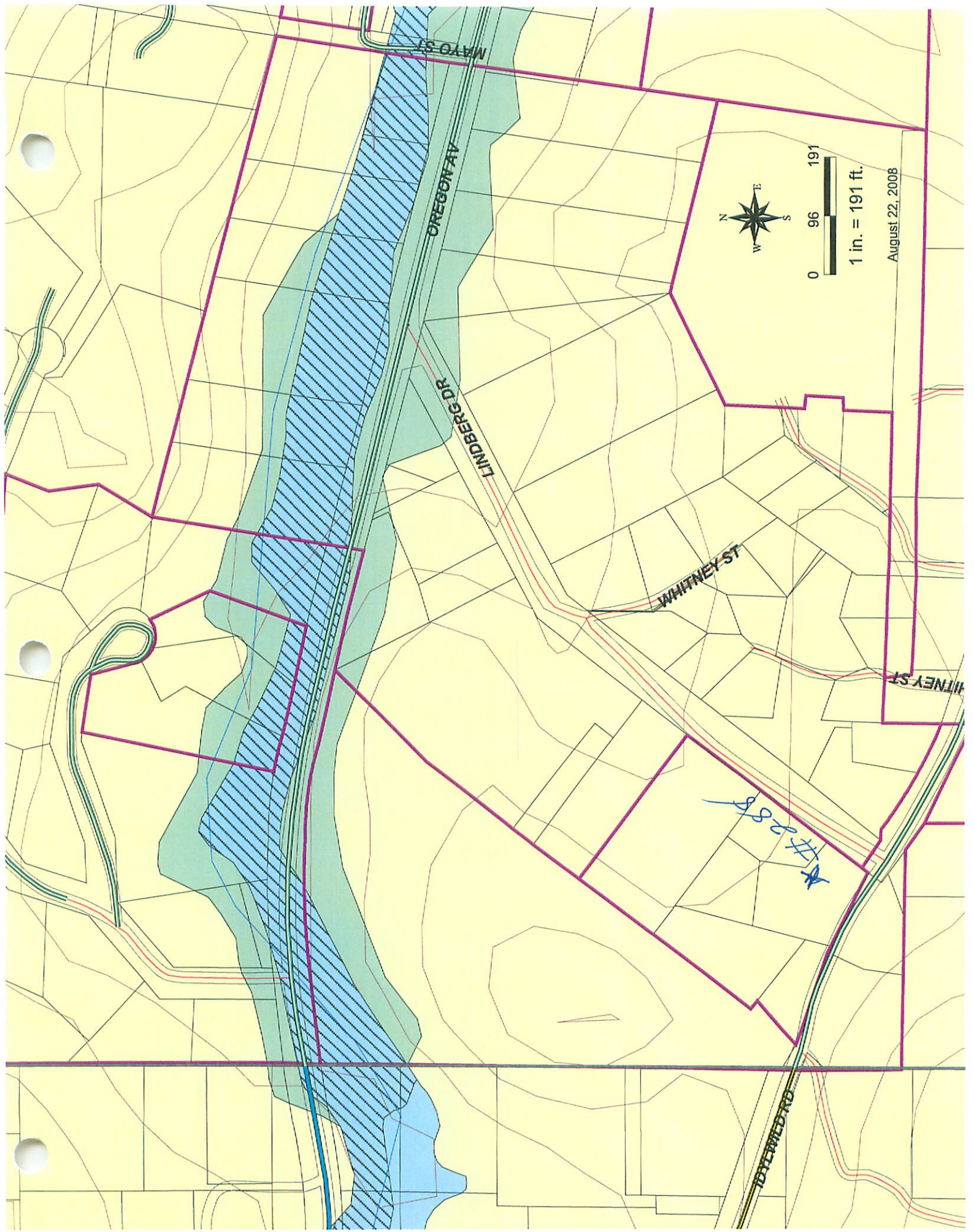


YAVAPAI COUNTY UNINCORPORATED AREAS 040093

LIMIT OF DETAILED STUDY

ZONE A

ZONE A SUNSET PARK



1 in. = 191 ft.

August 22, 2008

Handwritten blue text: # 288