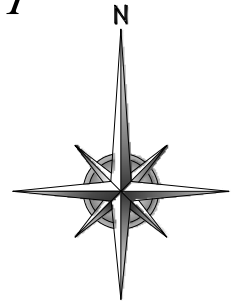


**YAVAPAI COUNTY FLOOD CONTROL DISTRICT
REFERENCE MONUMENT RECORD**

SITUATED IN SECTION 33, TOWNSHIP 14 NORTH, RANGE 1 WEST
GILA AND SALT RIVER MERIDIAN, YAVAPAI COUNTY, ARIZONA



RM 90A



SCALE: 1" = 800'

DESCRIPTION: THE POINT IS A YAVAPAI COUNTY ALUMINUM CAP ON THE SOUTHWEST PARAPET WALL OF THE BRIDGE ALONG OLD BLACK CANYON HIGHWAY WHERE IT CROSSES LYNX CREEK MARKED RM 90A 2005.

WGS84 POSITION

LATITUDE: 34°33'07.17066"N
LONGITUDE: 112°22'24.50080"W
HEIGHT: 5174.649 ift

NAD83/NAVD88 AZ SP POSITION

NORTHING: 1292564.0527 ift
EASTING: 562457.5501 ift
ELEVATION: 5260.846 ift

RM 90B

DESCRIPTION: THE POINT IS A 3" BRASS CAP ON PIPE AT THE SOUTHEAST CORNER OF THE INTERSECTION OF OLD BLACK CANYON HIGHWAY AND LYNX CREEK ROAD MARKED RM 90B 2014 RLS 33861.

WGS84 POSITION

LATITUDE: 34°33'03.67958"N
LONGITUDE: 112°22'30.58063"W
HEIGHT: 5207.949 ift

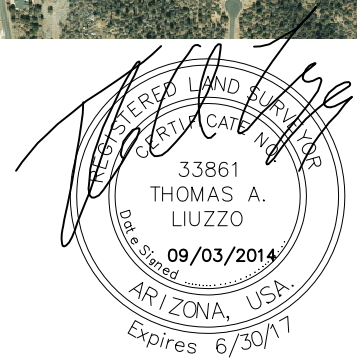
NAD83/NAVD88 AZ SP POSITION

NORTHING: 1292213.448 ift
EASTING: 561947.440 ift
ELEVATION: 5294.000 ift



REFERENCE MARK NOTE

THE FINISHED FLOOR ELEVATIONS FOR STRUCTURES IN THIS AREA AS STATED ON THE PLAT OF LYNX CREEK ESTATES UNIT V ARE BASED ON A POINT CALLED RM 90 WITH THE ELEVATION OF 5295.90 AND THAT POINT APPEARS TO NOW BE DESTROYED. THAT PLAT WAS RECORDED IN 1993 AND AN ASSUMPTION CAN BE MADE THAT THE ELEVATION WAS ESTIMATED USING THE NGVD 29 DATUM. FEMA REPORTED THE NGVD 29 ELEVATION OF RM 90 AS 5295.00 AND THE NAVD 88 ELEVATION AS 5297.94. THE 2.94' DELTA BETWEEN THE NGVD 29 DATUM AND THE NAVD 88 DATUM AGREES WITH THE NGS REPORTING FOR OTHER BENCHMARKS IN THIS AREA.



1981 Commerce Center Circle
Suite B Prescott, Arizona 86301
928.717.0171
928.717.0181 fax

**YAVAPAI COUNTY FLOOD CONTROL DISTRICT
REFERENCE MONUMENT RECORD
RM #90A & 90B**

PREPARED FOR:
YAVAPAI COUNTY FLOOD CONTROL DISTRICT
1120 COMMERCE DRIVE
PRESCOTT, AZ 86305

GBE JOB #: 14096

DRAWN BY: TL

DATE: SEPT 2014

SCALE 1"=800'

ELEVATION REFERENCE MONUMENT

ERM: 90A

Panel: ~~2115~~

Elevation (NAVD88): 5260.85

Elevation (NGVD29): 5257.91

Latitude: 34°33'07" N

Longitude: 112°22'24" W

Description: Yavapai County brass tablet on top of southwest corner bridge parapet wall of Old Black Canyon Highway crossing Lynx Creek. Approximately 0.12 miles northeasterly on Old Black Canyon Highway from intersection of Old Black Canyon Highway & Creekside Drive.

SEE TOM LUIZZO'S VERIFICATION OF THIS ERM DATED 9/3/2014 (ORIGINALLY PLACED IN 2005 BY YC). SINCE THIS IS A YAVAPAI COUNTY ERM (NOT FEMA) THE PANEL HAS BEEN CORRECTED TO THE CURRENT PANEL#: 2090_90A

YAVAPAI COUNTY FLOOD CONTROL DISTRICT

MONUMENT RECORD FORM

CORNER LOCATION INFORMATION

SECTION 33, CORNER INDEX CODE _____
 TOWNSHIP 14 NORTH, RANGE 1 WEST
61SRB & MERIDIAN YAVAPAI COUNTY

CORNER TYPE:

ALIQUOT GOV'T COR. NON-ALIQUOT GOV'T COR. OTHER

FORMAL CORNER NAME: RM 90-A

COUNTY FILING INFORMATION

APPLY COUNTY STICKER HERE IF APPLICABLE

FEE # _____
 DOCKET _____ PAGE _____
 _____ COUNTY, ARIZONA

DATE _____ HOUR _____
 FEE: _____ PAGES _____
 REQUEST OF: _____

TITLE: _____
 SUBMITTED TO BE CHECKED FOR COMPLETENESS
 FILED AT REQUEST OF COUNTY REVIEWER

TITLE: _____
 SIGNED: _____ DATE: _____

TOWNSHIP INDEX

SCALE: 1" = 10,000'

	1	2	3	4	5	6	7	8	9	10	11	12	13	14	15	16	17	18	19	20	21	22	23	24	25
A	+	+	+	+	+	+	+	+	+	+	+	+	+	+	+	+	+	+	+	+	+	+	+	+	+
B	+	+	+	+	+	+	+	+	+	+	+	+	+	+	+	+	+	+	+	+	+	+	+	+	+
C	+	+	+	+	+	+	+	+	+	+	+	+	+	+	+	+	+	+	+	+	+	+	+	+	+
D	+	+	+	+	+	+	+	+	+	+	+	+	+	+	+	+	+	+	+	+	+	+	+	+	+
E	+	+	+	+	+	+	+	+	+	+	+	+	+	+	+	+	+	+	+	+	+	+	+	+	+
F	+	+	+	+	+	+	+	+	+	+	+	+	+	+	+	+	+	+	+	+	+	+	+	+	+
G	+	+	+	+	+	+	+	+	+	+	+	+	+	+	+	+	+	+	+	+	+	+	+	+	+
H	+	+	+	+	+	+	+	+	+	+	+	+	+	+	+	+	+	+	+	+	+	+	+	+	+
I	+	+	+	+	+	+	+	+	+	+	+	+	+	+	+	+	+	+	+	+	+	+	+	+	+
J	+	+	+	+	+	+	+	+	+	+	+	+	+	+	+	+	+	+	+	+	+	+	+	+	+
K	+	+	+	+	+	+	+	+	+	+	+	+	+	+	+	+	+	+	+	+	+	+	+	+	+
L	+	+	+	+	+	+	+	+	+	+	+	+	+	+	+	+	+	+	+	+	+	+	+	+	+
M	+	+	+	+	+	+	+	+	+	+	+	+	+	+	+	+	+	+	+	+	+	+	+	+	+
N	+	+	+	+	+	+	+	+	+	+	+	+	+	+	+	+	+	+	+	+	+	+	+	+	+
O	+	+	+	+	+	+	+	+	+	+	+	+	+	+	+	+	+	+	+	+	+	+	+	+	+
P	+	+	+	+	+	+	+	+	+	+	+	+	+	+	+	+	+	+	+	+	+	+	+	+	+
Q	+	+	+	+	+	+	+	+	+	+	+	+	+	+	+	+	+	+	+	+	+	+	+	+	+
R	+	+	+	+	+	+	+	+	+	+	+	+	+	+	+	+	+	+	+	+	+	+	+	+	+
S	+	+	+	+	+	+	+	+	+	+	+	+	+	+	+	+	+	+	+	+	+	+	+	+	+
T	+	+	+	+	+	+	+	+	+	+	+	+	+	+	+	+	+	+	+	+	+	+	+	+	+
U	+	+	+	+	+	+	+	+	+	+	+	+	+	+	+	+	+	+	+	+	+	+	+	+	+
V	+	+	+	+	+	+	+	+	+	+	+	+	+	+	+	+	+	+	+	+	+	+	+	+	+
W	+	+	+	+	+	+	+	+	+	+	+	+	+	+	+	+	+	+	+	+	+	+	+	+	+
X	+	+	+	+	+	+	+	+	+	+	+	+	+	+	+	+	+	+	+	+	+	+	+	+	+
Y	+	+	+	+	+	+	+	+	+	+	+	+	+	+	+	+	+	+	+	+	+	+	+	+	+
Z	+	+	+	+	+	+	+	+	+	+	+	+	+	+	+	+	+	+	+	+	+	+	+	+	+

MONUMENT FIELD VISIT INFORMATION

DATE OF FIELD VISIT: 12/23/2005

MONUMENT:

LEFT AS FOUND FOUND & TAGGED FOUND & REBUILT
 RESTORED LOST CORNER ESTABLISHED NEW ACCESSORIES

STATE PLANE COORDINATES: ESTABLISHED TO _____ ORDER

ZONE: WEST CENTRAL EAST NOT ESTABLISHED

DATA: N.A.D.1927 (FEET) N.A.V.D.1929 (FEET)

Y= _____ X= _____ EL.= _____

N.A.D.1983 (METERS) N.A.V.D.1988 (METERS)

N= _____ E= _____ EL.= _____

LAT. _____ NORTH, LONG. _____ WEST

GEOD HEIGHT _____ SCALE FACTOR _____

CONTROL STATIONS USED: RM 89 PER FIRM

PANEL 2103 OF 3925

DESCRIBE RECORD EVIDENCE FOUND, INCLUDING TIES AND ACCESSORIES, OR IF A MONUMENT NOT OF RECORD, TELL WHY YOU ACCEPTED IT AS VALID. DESCRIBE ANY ACTIONS TAKEN BY YOU TO REHABILITATE OR PERPETUATE THIS MONUMENT IF FOUND IN PERISHABLE OR DETERIORATED CONDITION. IF NO EVIDENCE OF THE ORIGINAL MONUMENT OR ITS LOCATION CAN BE FOUND, DESCRIBE THE PROCEDURE FOLLOWED IN THE RESTORATION OF THE MONUMENT AND THE CONTROLLING CORNERS USED, INCLUDING ALL RECORD OF SURVEY REFERENCES. DESCRIBE ANY NEW MONUMENT SET (INCLUDING ACCESSORY MONUMENTS) AS TO MATERIAL, SHAPE, MARKING, PROJECTION OR BURIAL, AND DISPOSITION OF OLD MONUMENT. DESCRIBE NEW TIES AND ACCESSORIES IN COORDINATION WITH THE SKETCH ON THE REVERSE. DESCRIBE ANY CONFLICTING MONUMENTS OR EVIDENCE AND YOUR CONCLUSIONS.

RM 90-A

FOUND YAVAPAI COUNTY BRASS TABLET
ON TOP OF SW CORNER BRIDGE PARAPET
WALL OF OLD BLACK CANYON HWY
CROSSING LYNX CREEK

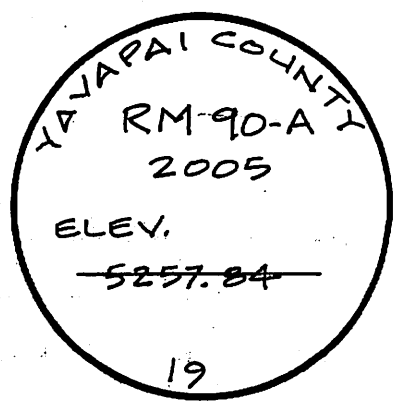
ELEVATION = 5257.91 NAVD 79

ELEVATION = 5260.85 NAVD 88 (SEE ATTACHED)

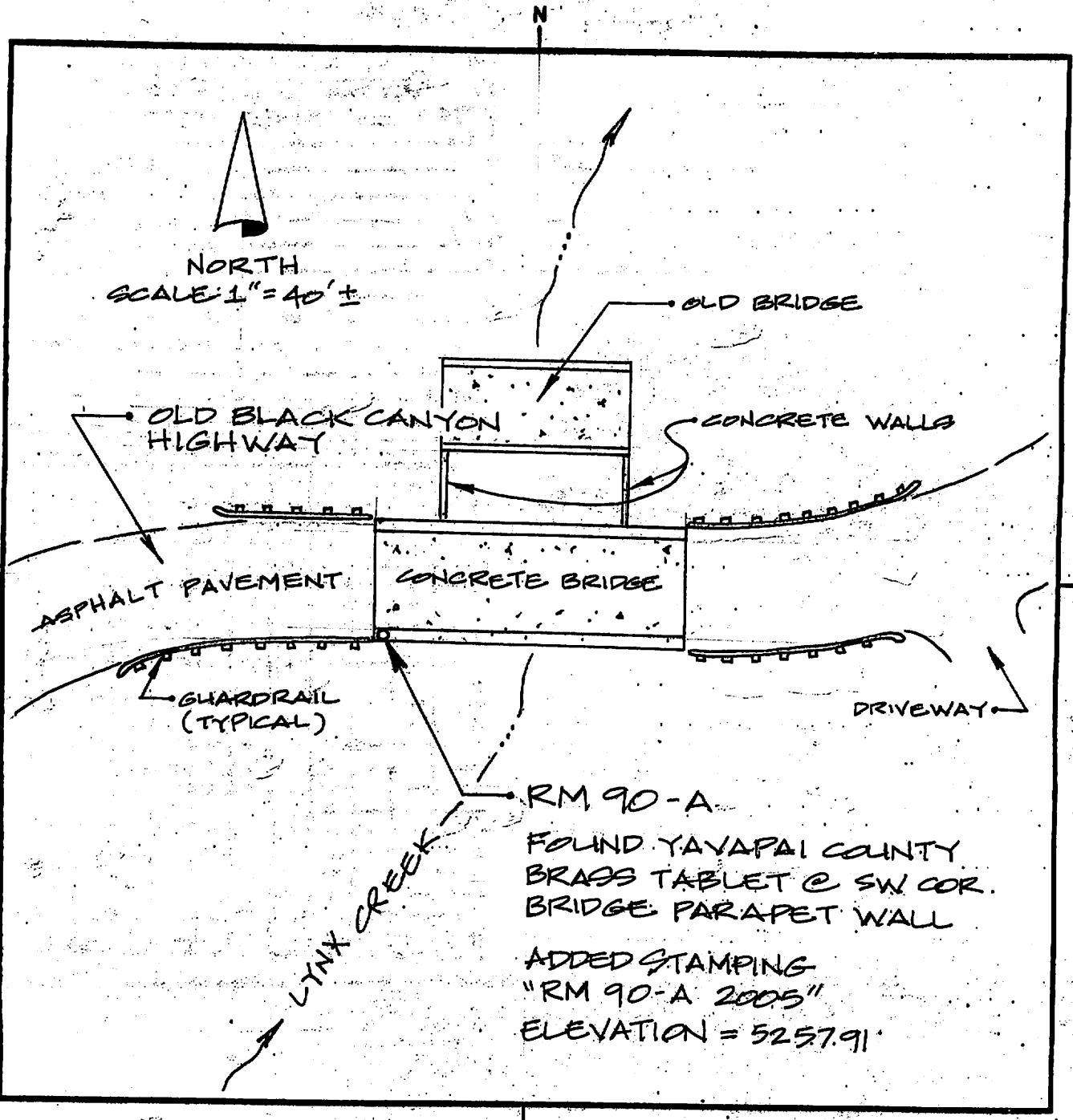
FILED RECORD OF SURVEY IN COUNTY RECORDS AT _____ BOOK _____ PAGE(S) _____
 ATTACHED SHEETS: WRITTEN TESTIMONY FIELD NOTE PAGE(S) OTHER _____

(OVER)

CORNER MONUMENT CAP STAMPING



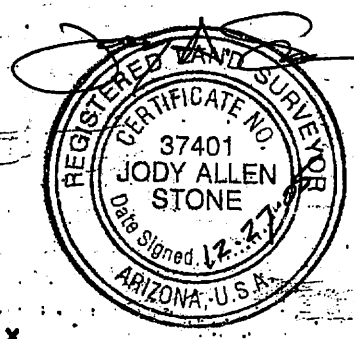
2115



AND SURVEYOR IDENTIFICATION AND CERTIFICATION

JODY A. STONE, ARIZONA R.L.S.
 NUMBER 37401, HEREBY CERTIFY THAT THIS CORNER RECORD
 AS PREPARED UNDER MY DIRECTION, THAT ALL MONUMENTATION
 ACTUALLY EXISTS AS SHOWN HEREON.

COMPANY NAME JDS ASSOCIATES LLC
 STREET ADDRESS _____
 MAILING ADDRESS PO BOX 3240
 CITY, STATE, ZIP CAMP VERDE AZ 86322
 TELEPHONE NUMBER 928-567-8543



IAN 2005

X SIGNATURE, SEAL AND DATE