

ELEVATION REFERENCE MONUMENT

ERM: 83A
Panel: 2140

Elevation (NAVD88): 4599.83
Elevation (NGVD29): 4597.21

Latitude: 34°32'26" N
Longitude: 112°14'47" W

Description: 3-1/4" diameter Yavapai County Flood Control District aluminum disk in concrete near paved driveway entrance gate to the "Whistle Stop Ranch" 18.3 feet south of centerline paved driveway & 8 feet west of east r/w fence for Highway 69.

YAVAPAI COUNTY FLOOD CONTROL DISTRICT

MONUMENT RECORD FORM

CORNER LOCATION INFORMATION

SECTION 34, CORNER INDEX CODE _____
 TOWNSHIP 14 NORTH, RANGE 1 EAST
 _____ MERIDIAN _____ COUNTY

CORNER TYPE:

ALIQUOT GOV'T COR. NON-ALIQUOT GOV'T COR. OTHER
 FORMAL CORNER NAME: RM 83A

COUNTY FILING INFORMATION

APPLY COUNTY STICKER HERE IF APPLICABLE

FEE # _____
 DOCKET _____ PAGE _____
 _____ COUNTY, ARIZONA
 DATE _____ HOUR _____
 FEE: _____ PAGES _____
 REQUEST OF: _____

 TITLE: _____
 SUBMITTED TO BE CHECKED FOR COMPLETENESS
 FILED AT REQUEST OF COUNTY REVIEWER

TOWNSHIP INDEX SCALE: 1" = 10,000'

	1	2	3	4	5	6	7	8	9	10	11	12	13	14	15	16	17	18	19	20	21	22	23	24	25
A	*	*	*	*	*	*	*	*	*	*	*	*	*	*	*	*	*	*	*	*	*	*	*	*	*
B	*	*	*	*	*	*	*	*	*	*	*	*	*	*	*	*	*	*	*	*	*	*	*	*	*
C	*	*	*	*	*	*	*	*	*	*	*	*	*	*	*	*	*	*	*	*	*	*	*	*	*
D	*	*	*	*	*	*	*	*	*	*	*	*	*	*	*	*	*	*	*	*	*	*	*	*	*
E	*	*	*	*	*	*	*	*	*	*	*	*	*	*	*	*	*	*	*	*	*	*	*	*	*
F	*	*	*	*	*	*	*	*	*	*	*	*	*	*	*	*	*	*	*	*	*	*	*	*	*
G	*	*	*	*	*	*	*	*	*	*	*	*	*	*	*	*	*	*	*	*	*	*	*	*	*
H	*	*	*	*	*	*	*	*	*	*	*	*	*	*	*	*	*	*	*	*	*	*	*	*	*
I	*	*	*	*	*	*	*	*	*	*	*	*	*	*	*	*	*	*	*	*	*	*	*	*	*
J	*	*	*	*	*	*	*	*	*	*	*	*	*	*	*	*	*	*	*	*	*	*	*	*	*
K	*	*	*	*	*	*	*	*	*	*	*	*	*	*	*	*	*	*	*	*	*	*	*	*	*
L	13	17	15	15	11	13																			
M	*	*	*	*	*	*	*	*	*	*	*	*	*	*	*	*	*	*	*	*	*	*	*	*	*
N	*	*	*	*	*	*	*	*	*	*	*	*	*	*	*	*	*	*	*	*	*	*	*	*	*
O	*	*	*	*	*	*	*	*	*	*	*	*	*	*	*	*	*	*	*	*	*	*	*	*	*
P	19	20	21	22	23	21																			
Q	*	*	*	*	*	*	*	*	*	*	*	*	*	*	*	*	*	*	*	*	*	*	*	*	*
R	*	*	*	*	*	*	*	*	*	*	*	*	*	*	*	*	*	*	*	*	*	*	*	*	*
S	26	29	28	27	25	25																			
T	*	*	*	*	*	*	*	*	*	*	*	*	*	*	*	*	*	*	*	*	*	*	*	*	*
U	*	*	*	*	*	*	*	*	*	*	*	*	*	*	*	*	*	*	*	*	*	*	*	*	*
V	*	*	*	*	*	*	*	*	*	*	*	*	*	*	*	*	*	*	*	*	*	*	*	*	*
W	*	*	*	*	*	*	*	*	*	*	*	*	*	*	*	*	*	*	*	*	*	*	*	*	*
X	31	32	33	31	35	35																			
Y	*	*	*	*	*	*	*	*	*	*	*	*	*	*	*	*	*	*	*	*	*	*	*	*	*
Z	*	*	*	*	*	*	*	*	*	*	*	*	*	*	*	*	*	*	*	*	*	*	*	*	*

MONUMENT FIELD VISIT INFORMATION

DATE OF FIELD VISIT: 01/26/2000

MONUMENT:

LEFT AS FOUND FOUND & TAGGED FOUND & REBUILT
 RESTORED LOST CORNER ESTABLISHED NEW ACCESSORIES

STATE PLANE COORDINATES: ESTABLISHED TO _____ ORDER
 ZONE: WEST CENTRAL EAST NOT ESTABLISHED

DATA: N.A.D. 1927 (FEET) N.A.V.D. 1929 (FEET)

X = _____ EL. = _____

N.A.D. 1983 (METERS) N.A.V.D. 1988 (METERS)

N = _____ E = _____ EL. = _____

LAT. _____ NORTH, LONG. _____ WEST

GEOD HEIGHT _____ SCALE FACTOR _____

CONTROL STATIONS USED: RM 82 - FND U.S.D.I. G.S.

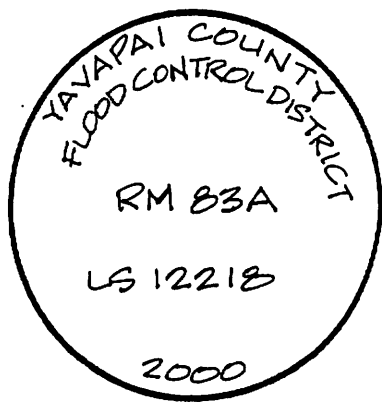
BRASS CAP INTACT PER F.I.R.M. PANEL 1280

DESCRIBE RECORD EVIDENCE FOUND, INCLUDING TIES AND ACCESSORIES, OR IF A MONUMENT NOT OF RECORD, TELL WHY YOU ACCEPTED IT AS VALID. DESCRIBE ANY ACTIONS TAKEN BY YOU TO REHABILITATE OR PERPETUATE THIS MONUMENT IF FOUND IN PERISHABLE OR DETERIORATED CONDITION. IF NO EVIDENCE OF THE ORIGINAL MONUMENT OR ITS LOCATION CAN BE FOUND, DESCRIBE THE PROCEDURE FOLLOWED IN THE RESTORATION OF THE MONUMENT AND THE CONTROLLING CORNERS USED, INCLUDING ALL RECORD OF SURVEY REFERENCES. DESCRIBE ANY NEW MONUMENT SET (INCLUDING ACCESSORY MONUMENTS) AS TO MATERIAL, SHAPE, MARKING, PROJECTION OR BURIAL, AND DISPOSITION OF OLD MONUMENT. DESCRIBE NEW TIES AND ACCESSORIES IN COORDINATION WITH THE SKETCH ON THE REVERSE. DESCRIBE ANY CONFLICTING MONUMENTS OR EVIDENCE AND YOUR CONCLUSIONS.

RM 83A - SET TO REPLACE RM 83 (MISSING)
SET 3/4" DIA. Y.F.C.D. ALUM DISC IN CONCRETE
NEAR PAVED DRIVEWAY ENTRANCE TO THE
"WHISTLE STOP RANCH" & THE EAST RAW
FENCE FOR HWY 60

ELEV = 4597.205

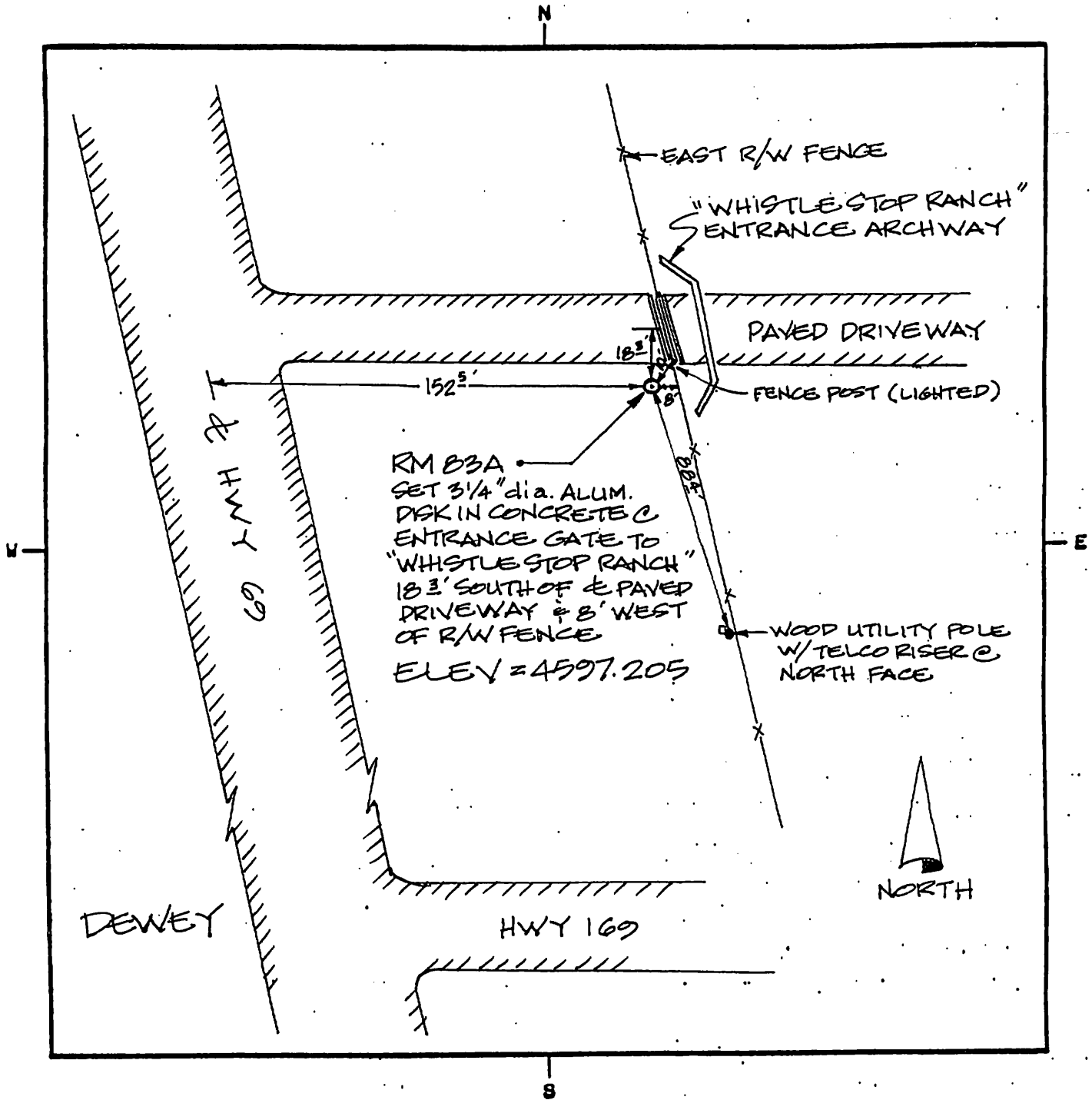
CORNER MONUMENT CAP STAMPING



FILED RECORD OF SURVEY IN COUNTY RECORDS AT _____ BOOK _____, PAGE(S) _____
 ATTACHED SHEETS: WRITTEN TESTIMONY FIELD NOTE PAGE(S) OTHER _____

(OVER)

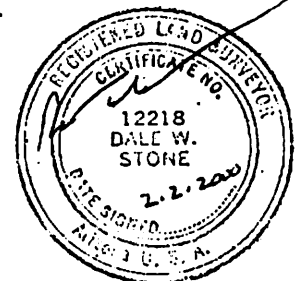
2140



LAND SURVEYOR IDENTIFICATION AND CERTIFICATION

I, DALE W. STONE, ARIZONA R.L.S. NUMBER 12218, HEREBY CERTIFY THAT THIS CORNER RECORD WAS PREPARED UNDER MY DIRECTION, THAT ALL MONUMENTATION ACTUALLY EXISTS AS SHOWN HEREON.

COMPANY NAME IDS ASSOCIATES, L.L.C.
 STREET ADDRESS _____
 MAILING ADDRESS PO BOX 3240
 CITY, STATE, ZIP CAMP VERDE, AZ 86320
 TELEPHONE NUMBER (520) 567-8543



X _____
 SIGNATURE, SEAL AND DATE



GOTO

PAGE

QUIT

MARK

ENTER

GPS 12

12 CHANNEL

FLORIDA COUNTY
FLOOD CONTROL DISTRICT
DO NOT DISTURB

RM 33A

LS 122-18

2000

10.30.2008