

## ELEVATION REFERENCE MONUMENT

**ERM:** 130A

**Panel:** 2215

**Elevation (NAVD88):** 3060.36

**Elevation (NGVD29):** 3057.97

**Latitude:** 34°32'19" N

**Longitude:** 111°51'56" W

**Description:** Yavapai County Flood Control District aluminum cap on 5/8" rebar flush with pavement in centerline of Pearl Drive approximately 45 feet north of intersection with Pheasant Run Circle.

# YAVAPAI COUNTY FLOOD CONTROL DISTRICT

## MONUMENT RECORD FORM

### CORNER LOCATION INFORMATION

SECTION 7, CORNER INDEX CODE \_\_\_\_\_  
 TOWNSHIP 13 NORTH, RANGE 5 EAST  
G.P.S.R. MERIDIAN YAVAPAI COUNTY

**CORNER TYPE:**

ALIQUOT GOV'T COR.    NON-ALIQUOT GOV'T COR.    OTHER  
 FORMAL CORNER NAME: RM 130A

**NOTES FOR USING TOWNSHIP INDEX TO DETERMINE INDEX CODE FOR ALIQUOT SECTION, QUARTER, AND SIXTEENTH CORNERS. PUT A CIRCLE AT THE CORNER LOCATION, THEN READ GRID DESIGNATION (A-1 THRU Z-25). A CORNER THAT APPLIES TO TWO OR MORE TOWNSHIPS SHOULD BE INDEXED UNDER THE TOWNSHIP NORTH OR WEST OF THE CORNER LOCATION AS INDICATED BY THE HEAVY LINE ON THE INDEX (GENERALLY THE SOUTH AND EAST LINES EXCEPT THE N.E. AND S.W. CORNERS). CLOSING CORNERS WILL BE INDEXED UNDER THE TOWNSHIP TO WHICH THEY APPLY. FOR 1/64 CORNERS AND FURTHER DIVISIONS, AND FOR NON-ALIQUOT CORNERS LYING BETWEEN GRID DESIGNATIONS OR WITHIN A GRID SQUARE ON THE INDEX, DRAW AN APPROPRIATE REFERENCE LINE OR SHAPE ON THE INDEX, THEN CIRCLE THE CORNER LOCATION AND SPECIFY THE NEAREST INDEX CODE TO THE NORTH OR WEST (IF ON A GRID LINE), OR AT THE NORTHWEST CORNER OF THE GRID BLOCK.**

### MONUMENT FIELD VISIT INFORMATION

DATE OF FIELD VISIT: 08/17/96

**MONUMENT:**

LEFT AS FOUND    FOUND & TAGGED    FOUND & REBUILT  
 RESTORED LOST CORNER    ESTABLISHED NEW ACCESSORIES

STATE PLANE COORDINATES:  ESTABLISHED TO \_\_\_\_\_ ORDER  
 ZONE:  WEST    CENTRAL    EAST    NOT ESTABLISHED

DATA:  N.A.D. 1927 (FEET)    N.A.V.D. 1929 (FEET)

Y= \_\_\_\_\_ X= \_\_\_\_\_ EL.= \_\_\_\_\_

N.A.D. 1983 (METERS)    N.A.V.D. 1988 (METERS)

N= \_\_\_\_\_ E= \_\_\_\_\_ EL.= \_\_\_\_\_

LAT. \_\_\_\_\_ NORTH, LONG. \_\_\_\_\_ WEST

GEOID HEIGHT \_\_\_\_\_ SCALE FACTOR \_\_\_\_\_

CONTROL STATIONS USED: RM 129 (PANEL 1025)

### COUNTY FILING INFORMATION

APPLY COUNTY STICKER HERE IF APPLICABLE

FEE \$ \_\_\_\_\_  
 DOCKET \_\_\_\_\_ PAGE \_\_\_\_\_  
 \_\_\_\_\_ COUNTY, ARIZONA  
 DATE \_\_\_\_\_ HOUR \_\_\_\_\_  
 FEE: \_\_\_\_\_ PAGES \_\_\_\_\_  
 REQUEST OF: \_\_\_\_\_

TITLE: \_\_\_\_\_

SUBMITTED TO BE CHECKED FOR COMPLETENESS

FILED AT REQUEST OF COUNTY REVIEWER \_\_\_\_\_

TITLE: \_\_\_\_\_

SIGNED: \_\_\_\_\_ DATE: \_\_\_\_\_

### TOWNSHIP INDEX

SCALE: 1" = 16,000'

	A	B	C	D	E	F	G	H	I	J	K	L	M	N	O	P	Q	R	S	T	U	V	W	X	Y	Z
A	•	•	•	•	•	•	•	•	•	•	•	•	•	•	•	•	•	•	•	•	•	•	•	•	•	•
B	•	•	•	•	•	•	•	•	•	•	•	•	•	•	•	•	•	•	•	•	•	•	•	•	•	•
C	•	•	•	•	•	•	•	•	•	•	•	•	•	•	•	•	•	•	•	•	•	•	•	•	•	•
D	•	•	•	•	•	•	•	•	•	•	•	•	•	•	•	•	•	•	•	•	•	•	•	•	•	•
E	•	•	•	•	•	•	•	•	•	•	•	•	•	•	•	•	•	•	•	•	•	•	•	•	•	•
F	•	•	•	•	•	•	•	•	•	•	•	•	•	•	•	•	•	•	•	•	•	•	•	•	•	•
G	•	•	•	•	•	•	•	•	•	•	•	•	•	•	•	•	•	•	•	•	•	•	•	•	•	•
H	•	•	•	•	•	•	•	•	•	•	•	•	•	•	•	•	•	•	•	•	•	•	•	•	•	•
I	•	•	•	•	•	•	•	•	•	•	•	•	•	•	•	•	•	•	•	•	•	•	•	•	•	•
J	•	•	•	•	•	•	•	•	•	•	•	•	•	•	•	•	•	•	•	•	•	•	•	•	•	•
K	•	•	•	•	•	•	•	•	•	•	•	•	•	•	•	•	•	•	•	•	•	•	•	•	•	•
L	•	•	•	•	•	•	•	•	•	•	•	•	•	•	•	•	•	•	•	•	•	•	•	•	•	•
M	•	•	•	•	•	•	•	•	•	•	•	•	•	•	•	•	•	•	•	•	•	•	•	•	•	•
N	•	•	•	•	•	•	•	•	•	•	•	•	•	•	•	•	•	•	•	•	•	•	•	•	•	•
O	•	•	•	•	•	•	•	•	•	•	•	•	•	•	•	•	•	•	•	•	•	•	•	•	•	•
P	•	•	•	•	•	•	•	•	•	•	•	•	•	•	•	•	•	•	•	•	•	•	•	•	•	•
Q	•	•	•	•	•	•	•	•	•	•	•	•	•	•	•	•	•	•	•	•	•	•	•	•	•	•
R	•	•	•	•	•	•	•	•	•	•	•	•	•	•	•	•	•	•	•	•	•	•	•	•	•	•
S	•	•	•	•	•	•	•	•	•	•	•	•	•	•	•	•	•	•	•	•	•	•	•	•	•	•
T	•	•	•	•	•	•	•	•	•	•	•	•	•	•	•	•	•	•	•	•	•	•	•	•	•	•
U	•	•	•	•	•	•	•	•	•	•	•	•	•	•	•	•	•	•	•	•	•	•	•	•	•	•
V	•	•	•	•	•	•	•	•	•	•	•	•	•	•	•	•	•	•	•	•	•	•	•	•	•	•
W	•	•	•	•	•	•	•	•	•	•	•	•	•	•	•	•	•	•	•	•	•	•	•	•	•	•
X	•	•	•	•	•	•	•	•	•	•	•	•	•	•	•	•	•	•	•	•	•	•	•	•	•	•
Y	•	•	•	•	•	•	•	•	•	•	•	•	•	•	•	•	•	•	•	•	•	•	•	•	•	•
Z	•	•	•	•	•	•	•	•	•	•	•	•	•	•	•	•	•	•	•	•	•	•	•	•	•	•

DESCRIBE RECORD EVIDENCE FOUND, INCLUDING TIES AND ACCESSORIES, OR IF A MONUMENT NOT OF RECORD, TELL WHY YOU ACCEPTED IT AS VALID. DESCRIBE ANY ACTIONS TAKEN BY YOU TO REHABILITATE OR PERPETUATE THIS MONUMENT IF FOUND IN PERISHABLE OR DETERIORATED CONDITION. IF NO EVIDENCE OF THE ORIGINAL MONUMENT OR ITS LOCATION CAN BE FOUND, DESCRIBE THE PROCEDURE FOLLOWED IN THE RESTORATION OF THE MONUMENT AND THE CONTROLLING CORNERS USED, INCLUDING ALL RECORD OF SURVEY REFERENCES. DESCRIBE ANY NEW MONUMENT SET (INCLUDING ACCESSORY MONUMENTS) AS TO MATERIAL, SHAPE, MARKING, PROJECTION OR BURIAL, AND DISPOSITION OF OLD MONUMENT. DESCRIBE NEW TIES AND ACCESSORIES IN COORDINATION WITH THE SKETCH ON THE REVERSE. DESCRIBE ANY CONFLICTING MONUMENTS OR EVIDENCE AND YOUR CONCLUSIONS.

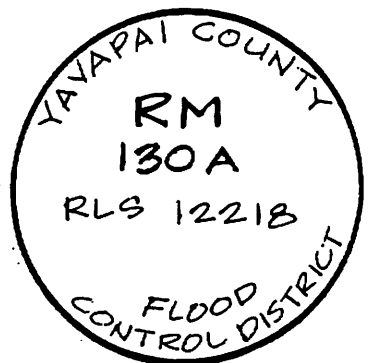
RM 130A

SET TO REPLACE RM 130 (NOT FOUND)  
PER Y.C.F.C.D. INSTRUCTIONS

ELEV. = 3057.97

(ESTABLISHED FROM RM 129)

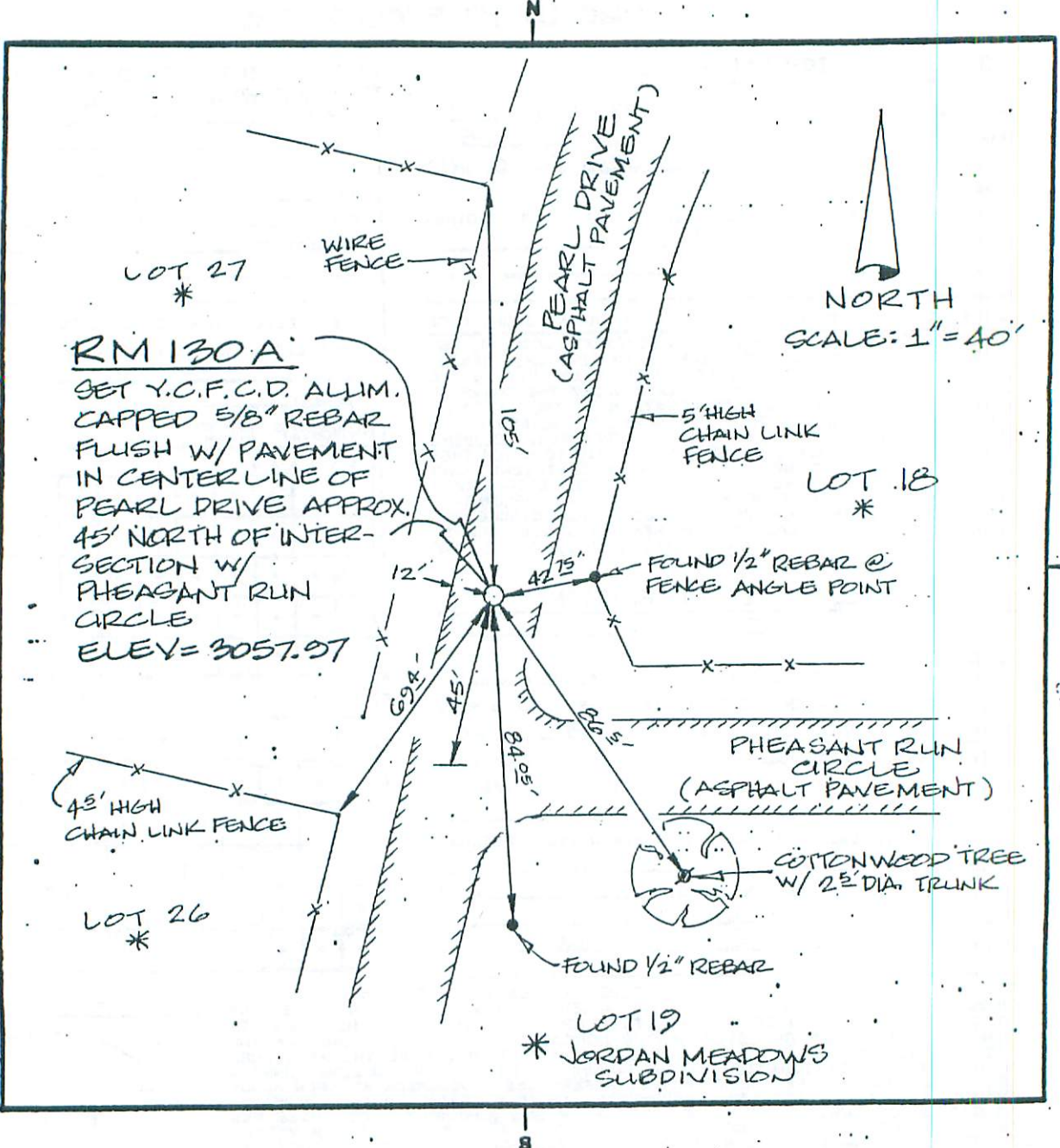
### CORNER MONUMENT CAP STAMPING



FILED RECORD OF SURVEY IN COUNTY RECORDS AT \_\_\_\_\_ BOOK \_\_\_\_\_ PAGE(S) \_\_\_\_\_  
 ATTACHED SHEETS:  WRITTEN TESTIMONY    FIELD NOTE PAGE(S)    OTHER \_\_\_\_\_

(OVER)

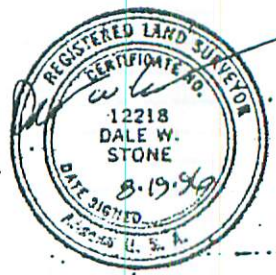
2215



LAND SURVEYOR IDENTIFICATION AND CERTIFICATION

I, DALE W. STONE, ARIZONA R.L.S. NUMBER 12218, HEREBY CERTIFY THAT THIS CORNER RECORD WAS PREPARED UNDER MY DIRECTION, THAT ALL MONUMENTATION ACTUALLY EXISTS AS SHOWN HEREON.

COMPANY NAME DALE W. STONE  
 STREET ADDRESS \_\_\_\_\_  
 MAILING ADDRESS PO BOX 1258  
 CITY, STATE, ZIP CAMP VERDE AZ 86322  
 TELEPHONE NUMBER 520-567-5344

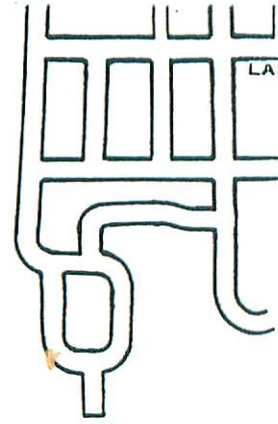


SIGNATURE, SEAL AND DATE

CAMP VERDE

36

31



Lower Camp Verde  
Indian Reservat  
AREA LOT INCLU

T14N

T13N

R4E

R5E

Creek

ZONE B

RM 130A  
GET YCFCD ALUM CAP  
FLUSH W/ PAVEMENT  
ELEVATION = 3057.97

ZONE A

LIMIT OF  
DETAILED  
STUDY

ZONE B

VERDE

ZONE A17

FORT APACHE  
FORT McDOWELL  
PLACE

Ditch

Lucky Canyon  
Creek

12

Woods

SPRUCE  
STREET

PEARL  
DRIVE

PINE ST

ELM ST

FIR ST

RM 130

HILL  
D.

3057

3056

3054

3052

WAL

