

## ELEVATION REFERENCE MONUMENT

**ERM:** C1

**Panel:** 3125

**Elevation (NAVD88):** 3019.92

**Elevation (NGVD29):** 3017.44

**Latitude:** 34°09'18" N

**Longitude:** 112°50'37" W

**Description:** 2" diameter Yavapai County Flood Control District aluminum capped iron bar in concrete near west side of a utility pole approximately 80 feet southeasterly of intersection of Highway 89 & Deep Creek Road.

ARIZONA LAND SURVEY CORNER RECORD

MONUMENT FIELD VISIT INFORMATION

INDEX CODE

DATE OF FIELD VISIT NOV 13, 2008 MONUMENT ACCEPTED AS MARKING CORNER LOCATION:

- LEFT AS FOUND, FOUND & TAGGED, FOUND & REBUILT, RESTORED LOST CORNER, RESTORED OBLITERATED CORNER, ESTABLISHED NEW ACCESSORIES

GLO/BLM NOTES REC. & REF.

ARIZONA STATE PLANE COORDINATE SYSTEM: ESTABLISHED TO ORDER, CLASS

ZONE: WEST, CENTRAL, EAST QUADRANGLE DESIGNATION #

- N.A.D. 1927 (FEET), N.A.D. 1983 (METERS), W.G.S. 1984 (METERS)

- N.A.V.D. 1929 (FEET), N.A.V.D. 1988 (METERS), GEOID HEIGHT

N. (OR) Y= E. (OR) X= ELEVATION 3017.44 NGVD 29 DATUM

LATITUDE N34°09'17.99" LONGITUDE W112°50'36.85" GRID FACTOR 3019.92 NAVD 88 DATUM

CONTROL STATIONS USED: PANEL POINTS 1007, 1008, 1009 & 1011

DESCRIBE ALL EVIDENCE FOUND, INCLUDING TIES AND ACCESSORIES TO COMPLY WITH ARIZONA REVISED STATUTE TITLE 33, SECTION 106:

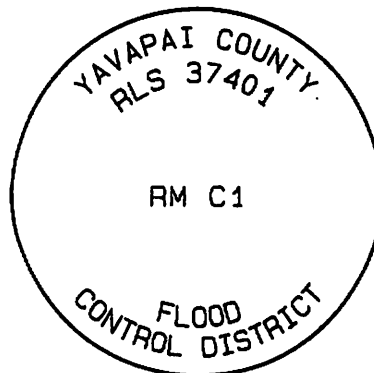
RM C1 ~ SET 2" DIAMETER Y.C.F.C.D. ALUMINUM CAP IN CONCRETE NEAR

UTILITY POLE SOUTHEAST OF INTERSECTION OF HIGHWAY 89 & DEEP CREEK ROAD.

RM C1 ELEVATION = 3017.44 NGVD 29 DATUM PER VERTCON CONVERSION

3019.92 NAVD 88 DATUM PER GPS RTK OBSERVATION

CORNER MONUMENT CAP STAMPING



CORNER LOCATION INFORMATION

TOWNSHIP 9 NORTH RANGE 6 WEST

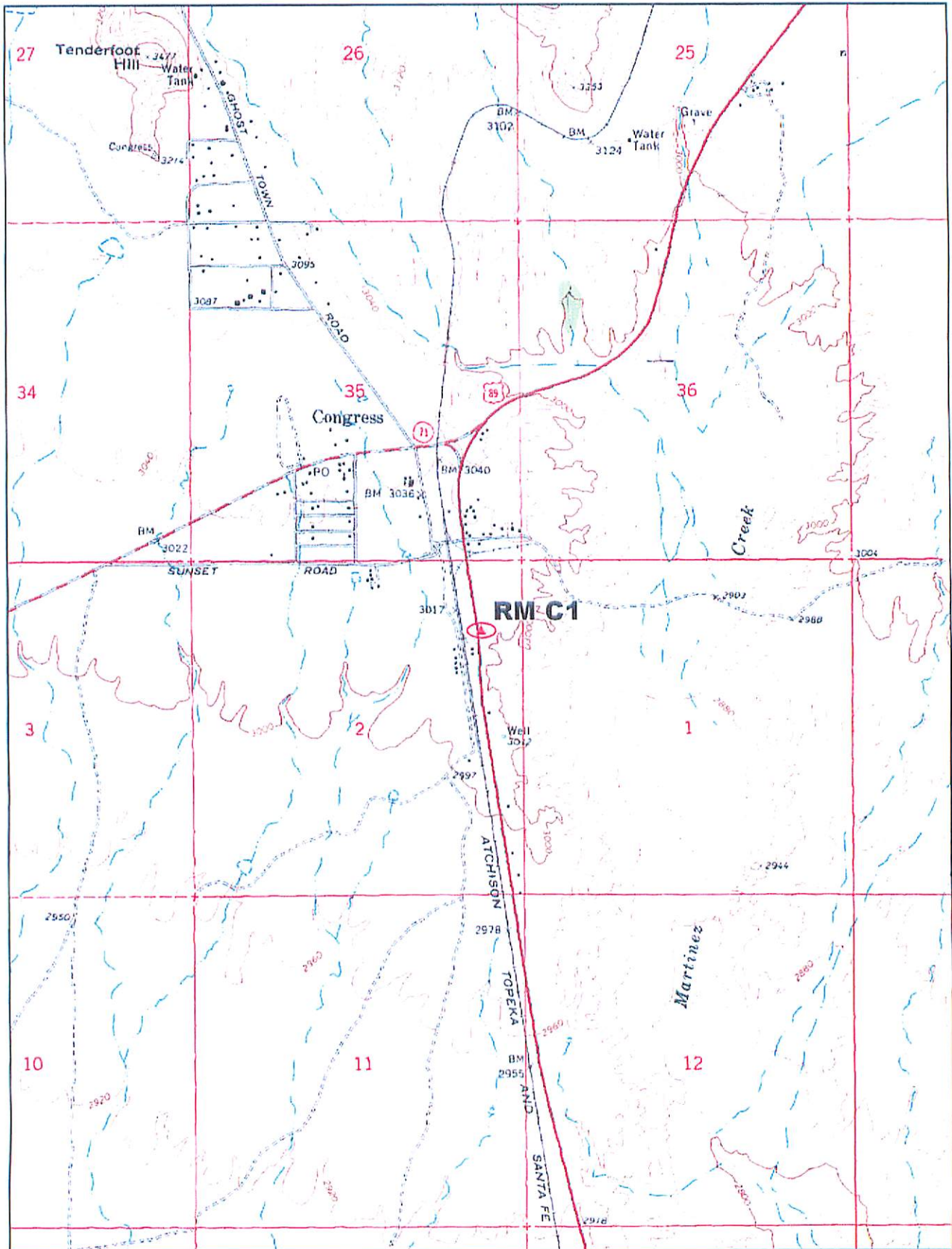
SECTION 2 CORNER INDEX CODE B-20

G&SRB& MERIDIAN YAVAPAI COUNTY

FORMAL CORNER NAME: RM C1

- ALIQUOT GOV'T COR., NON-ALIQUOT GOV'T COR., OTHER





© 2002 DeLorme, 3-D TopoQuads®. Data copyright of content owner.  
www.delorme.com

Scale 1 : 25,000  
1" = 2080 ft

