

## ELEVATION REFERENCE MONUMENT

**ERM:** 185

**Panel:** 3635

**Elevation (NAVD88):** 2199.43

**Elevation (NGVD29):** 2197.40

**Latitude:** 34°04'49" N

**Longitude:** 112°08'48" W

**Description:** U.S. Coastal and Geodetic Survey brass cap, approximately 150 feet south of a steel transmission tower at the top of a large hill between Interstate 17 and Old Black Canyon Highway, approximately 1,400 feet east and 1,600 feet south of the northwest corner of Section 34, T9N, R2E.

3635

**NATIONAL FLOOD INSURANCE PROGRAM**

**FIRM**

ORIGINAL

**FLOOD INSURANCE RATE MAP**

**YAVAPAI COUNTY,  
ARIZONA AND  
INCORPORATED AREAS**

**PANEL 3635 OF 3925**

(SEE MAP INDEX FOR PANELS NOT PRINTED)

<u>CONTAINS</u> <u>COMMUNITY</u>	<u>NUMBER</u>	<u>PANEL</u>	<u>SUFFIX</u>
YAVAPAI COUNTY UNINCORPORATED AREAS	040093	3635	F

**MAP NUMBER  
04025C3635 F**

**EFFECTIVE DATE:  
JUNE 6, 2001**



Federal Emergency Management Agency

A

B

112°11'15"  
34°07'30"

ELEVATION REFERENCE MARKS  
 REFERENCE ELEVATION  
 MARK (FEET NGVD) DESCRIPTION OF LOCATION

1  
 → Replaced - see RM  
 Book - 68A  
 RM182 1995.63 Aerial Mapping Company 1/2-inch rebar with aluminum cap, approximately 20 feet south of a wire fence line, approximately .375 mile east of old Black Canyon Highway, approximately 20 feet west of power tower wires, approximately 1,600 feet east and 900 feet north of the southwest corner of Section 34, T9N, R2E.

RM183 2020.91 Aerial Mapping Company chiseled square in top of headwall of bridge crossing the Agua Fria River tributary on the southeast side of road, approximately 12.7 feet northeast of the southwest corner of headwall, approximately 20 feet south of the centerline of Mud Springs Road, approximately 100 feet northeast of the intersection of Palo Verde Lane and Mud Springs Road, located approximately 200 feet east and 100 feet north of the southwest corner of Section 35, T9N, R2E.

2  
 W&A 71  
 RM185 2197.40 U.S. Coastal and Geodetic Survey brass cap, approximately 150 feet south of a steel transmission tower at the top of a large hill between Interstate 17 and Old Black Canyon Highway, approximately 1,400 feet east and 1,600 feet south of the northwest corner of Section 34, T9N, R2E.

18

19

NOTE  
TOWI  
RANG

ARIZONA LAND SURVEY CORNER RECORD

MONUMENT FIELD VISIT INFORMATION

INDEX CODE

DATE OF FIELD VISIT OCT 13 2008 MONUMENT ACCEPTED AS MARKING CORNER LOCATION:

- LEFT AS FOUND FOUND & TAGGED FOUND & REBUILT RESTORED LOST CORNER RESTORED OBLITERATED CORNER ESTABLISHED NEW ACCESSORIES

GLO/BLM NOTES REC. & REF.

ARIZONA STATE PLANE COORDINATE SYSTEM: ESTABLISHED TO ORDER, CLASS

ZONE: WEST CENTRAL EAST QUADRANGLE DESIGNATION #

N.A.D. 1927 (FEET) N.A.D. 1983 (METERS) W.G.S. 1984 (METERS)

N.A.V.D. 1929 (FEET) N.A.V.D. 1988 (METERS) GEOID HEIGHT

N. (OR) Y= E. (OR) X= ELEVATION

LATITUDE 34° 04' 49.32" LONGITUDE 112° 08' 47.63" GRID FACTOR

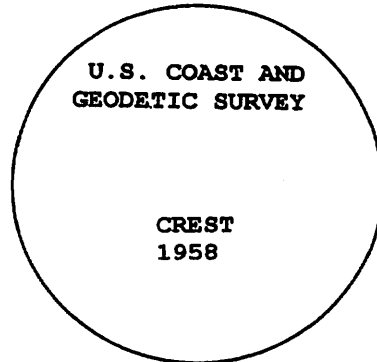
CONTROL STATIONS USED:

DESCRIBE ALL EVIDENCE FOUND, INCLUDING TIES AND ACCESSORIES TO COMPLY WITH ARIZONA REVISED STATUTE TITLE 33, SECTION 106: SEE REVERSE

FOUND U.S.C. & G.S. - BRASS DISK IN CONCRETE,

NGVD ELEVATION PER FIRM PANEL 3635 = 2197.40 (1929)

CORNER MONUMENT CAP STAMPING



RM 185

CORNER LOCATION INFORMATION

TOWNSHIP 9 NORTH RANGE 2 EAST

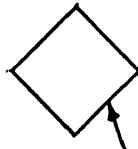
SECTION 34 CORNER INDEX CODE W-14

G & SR MERIDIAN YAVAPAI COUNTY

FORMAL CORNER NAME: RM 185

ALIQUOT GOV'T COR. NON-ALIQUOT GOV'T COR. OTHER (also see NGS Data Sheet for ties to reference monuments).

N



electric transmission line tower  
(south leg of tower to RM = 128.6')

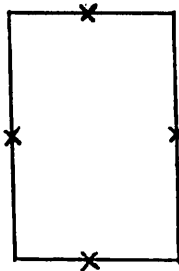
W

E

RM



RM 185  
FOUND BRASS DISK IN CONCRETE  
STAMPED "U.S. COAST AND GEODETIC  
SURVEY" "CREST 1958"  
(monument is on top of a hill between  
I-17 and Old Black Canyon Hwy).



wire fence enclosure for water tanks  
(northeast corner to RM = 75.9')

S

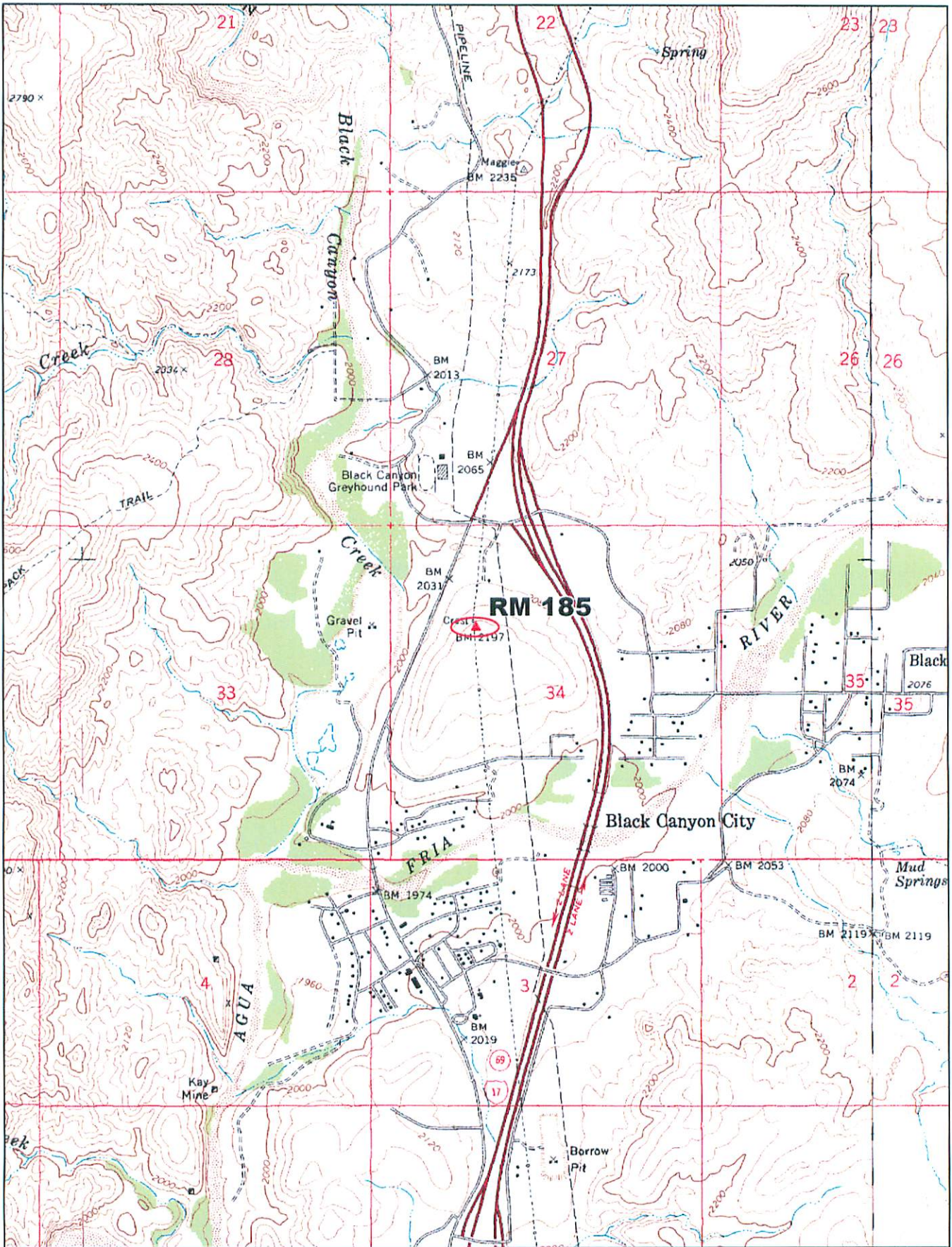
LAND SURVEYOR IDENTIFICATION AND CERTIFICATION

I, DALE W. STONE, ARIZONA R.L.S.  
NUMBER 12218, HEREBY CERTIFY THAT THIS CORNER RECORD  
WAS PREPARED UNDER MY DIRECTION, THAT ALL MONUMENTATION  
ACTUALLY EXISTS AS SHOWN HEREON.

COMPANY NAME JDS ASSOC LLC  
STREET ADDRESS \_\_\_\_\_  
MAILING ADDRESS PO BOX 3240  
CITY, STATE, ZIP CAMP VERDE AZ 86322  
TELEPHONE NUMBER 928 567 8543



SIGNATURE, SEAL AND DATE



© 2002 DeLorme, 3-D TopoQuads®. Data copyright of content owner.  
www.delorme.com

