

ELEVATION REFERENCE MONUMENT

ERM: 181A

Panel: 3645

Elevation (NAVD88): 1953.01

Elevation (NGVD29): 1950.98

Latitude: 34°03'38" N

Longitude: 112°09'24" W

Description: 3-1/4" diameter Yavapai County Flood Control District aluminum disk in concrete stamped "RM 181A LS 12218 2001". To get to station from Interstate 17 & Rock Springs/Black Canyon City exit, go west 0.2 miles from exit ramp to Old Black Canyon Highway, go north 0.5 miles to Oasis Drive and turn left. Then take first right onto Mesquite Drive, continue northwesterly for 0.7 miles to Kings Way. Station is located near the northwest corner of Lot 9 of Kings Ranch No.1. Station is 36 feet easterly from the centerline of Kings Way.

YAVAPAI COUNTY FLOOD CONTROL DISTRICT MONUMENT RECORD FORM

R E C E I V E D
NOV - 5 2001

CORNER LOCATION INFORMATION

SECTION 4, CORNER INDEX CODE _____
 TOWNSHIP 2 NORTH, RANGE 2 EAST
G & SRM MERIDIAN YAVAPAI COUNTY

CORNER TYPE:
 ALIQUOT GOV'T COR. NON-ALIQUOT GOV'T COR. OTHER
 FORMAL CORNER NAME: RM 181A

NOTES FOR USING TOWNSHIP INDEX TO DETERMINE INDEX CODE
 FOR ALIQUOT SECTION, QUARTER, AND SIXTEENTH CORNERS, PUT A CIRCLE AT THE CORNER LOCATION, THEN READ GRID DESIGNATION (A-1 THRU Z-25). A CORNER THAT APPLIES TO TWO OR MORE TOWNSHIPS SHOULD BE INDEXED UNDER THE TOWNSHIP NORTH OR WEST OF THE CORNER LOCATION AS INDICATED BY THE HEAVY LINE ON THE INDEX (GENERALLY THE SOUTH AND EAST LINES EXCEPT THE N.E. AND S.W. CORNERS). CLOSING CORNERS WILL BE INDEXED UNDER THE TOWNSHIP TO WHICH THEY APPLY. FOR 1/64 CORNERS AND FURTHER DIVISIONS, AND FOR NON-ALIQUOT CORNERS LYING BETWEEN GRID DESIGNATIONS OR WITHIN A GRID SQUARE ON THE INDEX, DRAW AN APPROPRIATE REFERENCE LINE OR SHAPE ON THE INDEX, THEN CIRCLE THE CORNER LOCATION AND SPECIFY THE NEAREST INDEX CODE TO THE NORTH OR WEST (IF ON A GRID LINE), OR AT THE NORTHWEST CORNER OF THE GRID BLOCK.

MONUMENT FIELD VISIT INFORMATION

DATE OF FIELD VISIT: OCT 31, 2001

MONUMENT:
 LEFT AS FOUND FOUND & TAGGED FOUND & REBUILT
 RESTORED LOST CORNER ESTABLISHED NEW ACCESSORIES
 STATE PLANE COORDINATES: ESTABLISHED TO _____ ORDER
 ZONE: WEST CENTRAL EAST NOT ESTABLISHED
 DATA: N.A.D. 1927 (FEET) N.A.V.D. 1929 (FEET)
 Y=_____ X=_____ EL.=_____
 N.A.D. 1983 (METERS) N.A.V.D. 1988 (METERS)
 N=_____ E=_____ EL.=_____
 LAT. _____ NORTH. LONG. _____ WEST
 GEOID HEIGHT _____ SCALE FACTOR _____
 CONTROL STATIONS USED: RM 68A

COUNTY FILING INFORMATION

APPLY COUNTY STICKER HERE IF APPLICABLE
 FEE \$ _____
 DOCKET _____ PAGE _____
 COUNTY, ARIZONA
 DATE _____ HOUR _____
 FEE: _____ PAGES _____
 REQUEST OF: _____
 TITLE: _____
 SUBMITTED TO BE CHECKED FOR COMPLETENESS
 FILED AT REQUEST OF COUNTY REVIEWER

TITLE: _____
 SIGNED: _____ DATE: _____

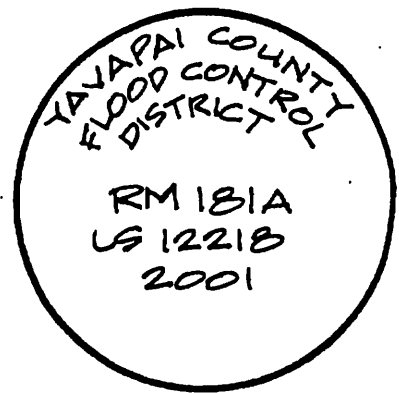
TOWNSHIP INDEX SCALE: 1" = 18,000'

	1	2	3	4	5	6	7	8	9	10	11	12	13	14	15	16	17	18	19	20	21	22	23	24	25
A	*	*	*	*	*	*	*	*	*	*	*	*	*	*	*	*	*	*	*	*	*	*	*	*	*
B	*	*	*	*	*	*	*	*	*	*	*	*	*	*	*	*	*	*	*	*	*	*	*	*	*
C	*	*	*	*	*	*	*	*	*	*	*	*	*	*	*	*	*	*	*	*	*	*	*	*	*
D	*	*	*	*	*	*	*	*	*	*	*	*	*	*	*	*	*	*	*	*	*	*	*	*	*
E	*	*	*	*	*	*	*	*	*	*	*	*	*	*	*	*	*	*	*	*	*	*	*	*	*
F	*	*	*	*	*	*	*	*	*	*	*	*	*	*	*	*	*	*	*	*	*	*	*	*	*
G	*	*	*	*	*	*	*	*	*	*	*	*	*	*	*	*	*	*	*	*	*	*	*	*	*
H	*	*	*	*	*	*	*	*	*	*	*	*	*	*	*	*	*	*	*	*	*	*	*	*	*
I	*	*	*	*	*	*	*	*	*	*	*	*	*	*	*	*	*	*	*	*	*	*	*	*	*
J	*	*	*	*	*	*	*	*	*	*	*	*	*	*	*	*	*	*	*	*	*	*	*	*	*
K	*	*	*	*	*	*	*	*	*	*	*	*	*	*	*	*	*	*	*	*	*	*	*	*	*
L	*	*	*	*	*	*	*	*	*	*	*	*	*	*	*	*	*	*	*	*	*	*	*	*	*
M	*	*	*	*	*	*	*	*	*	*	*	*	*	*	*	*	*	*	*	*	*	*	*	*	*
N	*	*	*	*	*	*	*	*	*	*	*	*	*	*	*	*	*	*	*	*	*	*	*	*	*
O	*	*	*	*	*	*	*	*	*	*	*	*	*	*	*	*	*	*	*	*	*	*	*	*	*
P	*	*	*	*	*	*	*	*	*	*	*	*	*	*	*	*	*	*	*	*	*	*	*	*	*
Q	*	*	*	*	*	*	*	*	*	*	*	*	*	*	*	*	*	*	*	*	*	*	*	*	*
R	*	*	*	*	*	*	*	*	*	*	*	*	*	*	*	*	*	*	*	*	*	*	*	*	*
S	*	*	*	*	*	*	*	*	*	*	*	*	*	*	*	*	*	*	*	*	*	*	*	*	*
T	*	*	*	*	*	*	*	*	*	*	*	*	*	*	*	*	*	*	*	*	*	*	*	*	*
U	*	*	*	*	*	*	*	*	*	*	*	*	*	*	*	*	*	*	*	*	*	*	*	*	*
V	*	*	*	*	*	*	*	*	*	*	*	*	*	*	*	*	*	*	*	*	*	*	*	*	*
W	*	*	*	*	*	*	*	*	*	*	*	*	*	*	*	*	*	*	*	*	*	*	*	*	*
X	*	*	*	*	*	*	*	*	*	*	*	*	*	*	*	*	*	*	*	*	*	*	*	*	*
Y	*	*	*	*	*	*	*	*	*	*	*	*	*	*	*	*	*	*	*	*	*	*	*	*	*
Z	*	*	*	*	*	*	*	*	*	*	*	*	*	*	*	*	*	*	*	*	*	*	*	*	*

DESCRIBE RECORD EVIDENCE FOUND, INCLUDING TIES AND ACCESSORIES, OR IF A MONUMENT NOT OF RECORD, TELL WHY YOU ACCEPTED IT AS VALID. DESCRIBE ANY ACTIONS TAKEN BY YOU TO REHABILITATE OR PERPETUATE THIS MONUMENT IF FOUND IN PERISHABLE OR DETERIORATED CONDITION. IF NO EVIDENCE OF THE ORIGINAL MONUMENT OR ITS LOCATION CAN BE FOUND, DESCRIBE THE PROCEDURE FOLLOWED IN THE RESTORATION OF THE MONUMENT AND THE CONTROLLING CORNERS USED, INCLUDING ALL RECORD OF SURVEY REFERENCES. DESCRIBE ANY NEW MONUMENT SET (INCLUDING ACCESSORY MONUMENTS) AS TO MATERIAL, SHAPE, MARKING, PROJECTION OR BURIAL, AND DISPOSITION OF OLD MONUMENT. DESCRIBE NEW TIES AND ACCESSORIES IN COORDINATION WITH THE SKETCH ON THE REVERSE. DESCRIBE ANY CONFLICTING MONUMENTS OR EVIDENCE AND YOUR CONCLUSIONS.

RM 181A (SET TO REPLACE RM 181 - MISSING)
SET 3/4" Y.C.F.C.D. ALUM. DISK IN CONCRETE
ELEVATION = 1950.98

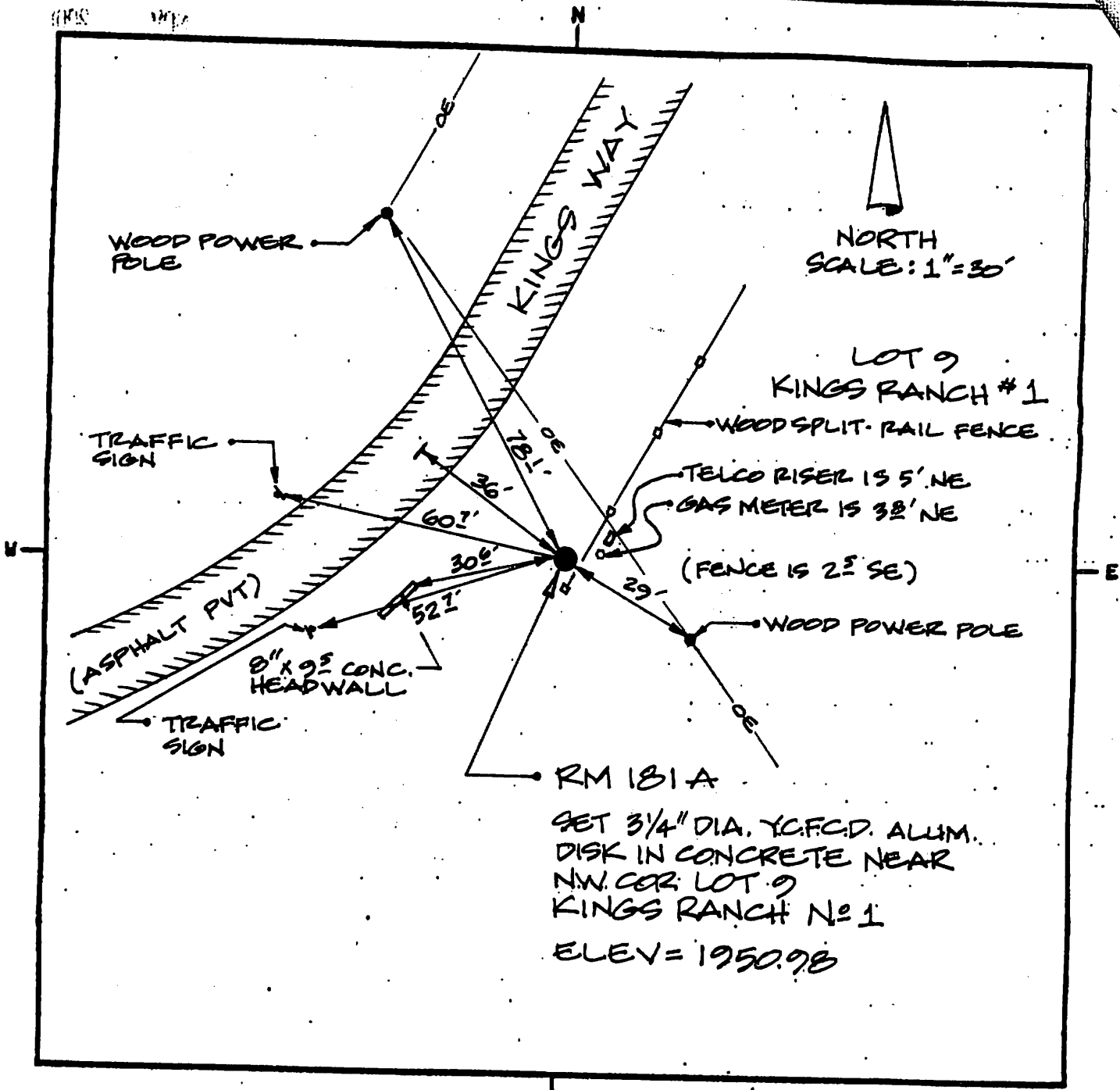
CORNER MONUMENT CAP STAMPING



36

SKETCH OF CORNER TIES AND ACCESSORIES

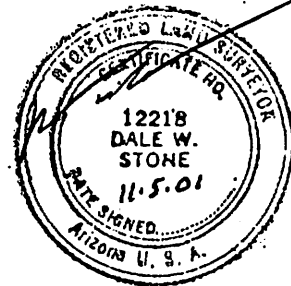
SCALE: 1" = 30'

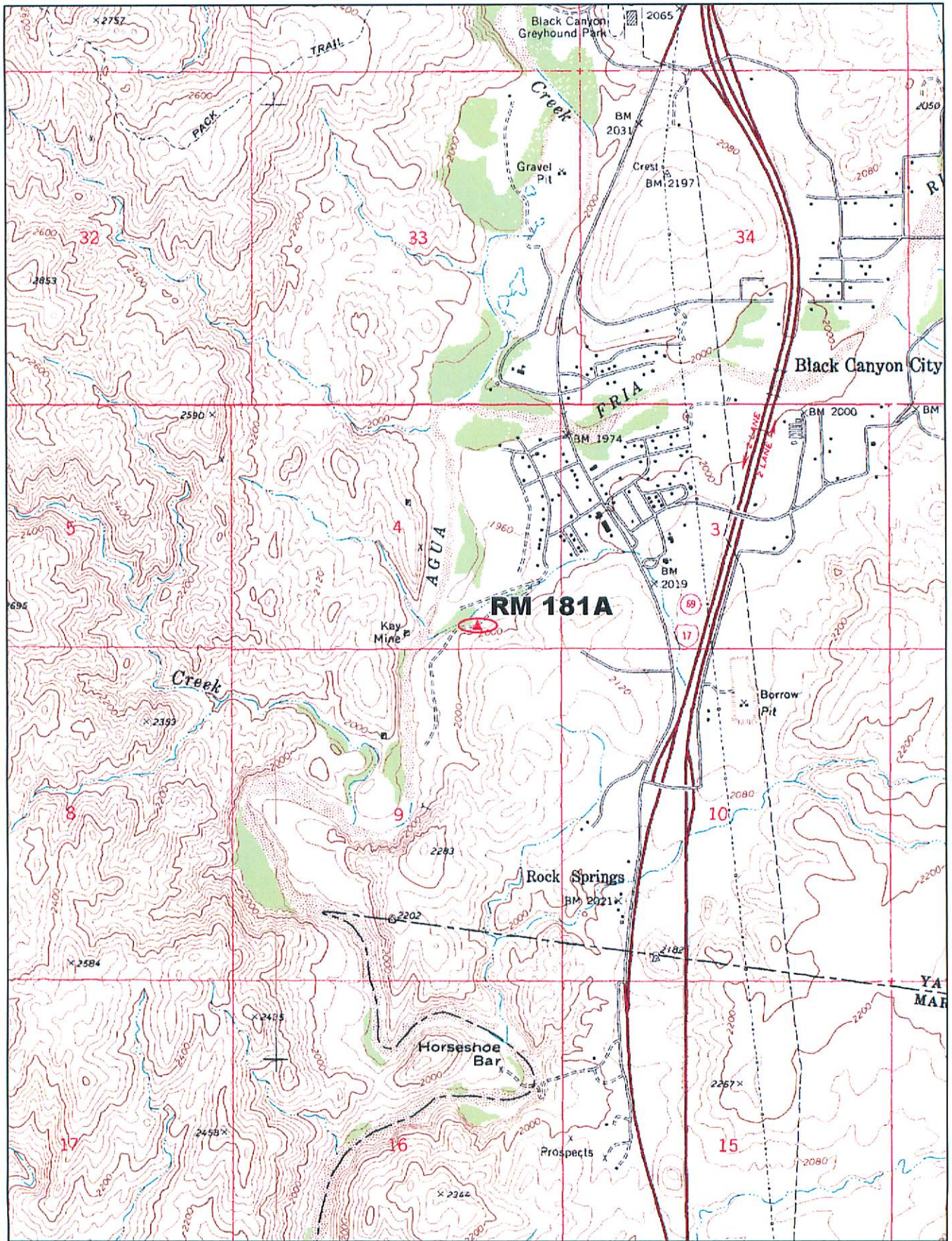


LAND SURVEYOR IDENTIFICATION AND CERTIFICATION

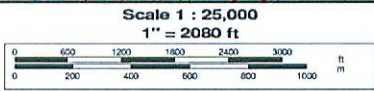
I, DALE W. STONE, ARIZONA R.L.S. NUMBER 12218, HEREBY CERTIFY THAT THIS CORNER RECORD WAS PREPARED UNDER MY DIRECTION, THAT ALL MONUMENTATION ACTUALLY EXISTS AS SHOWN HEREON.

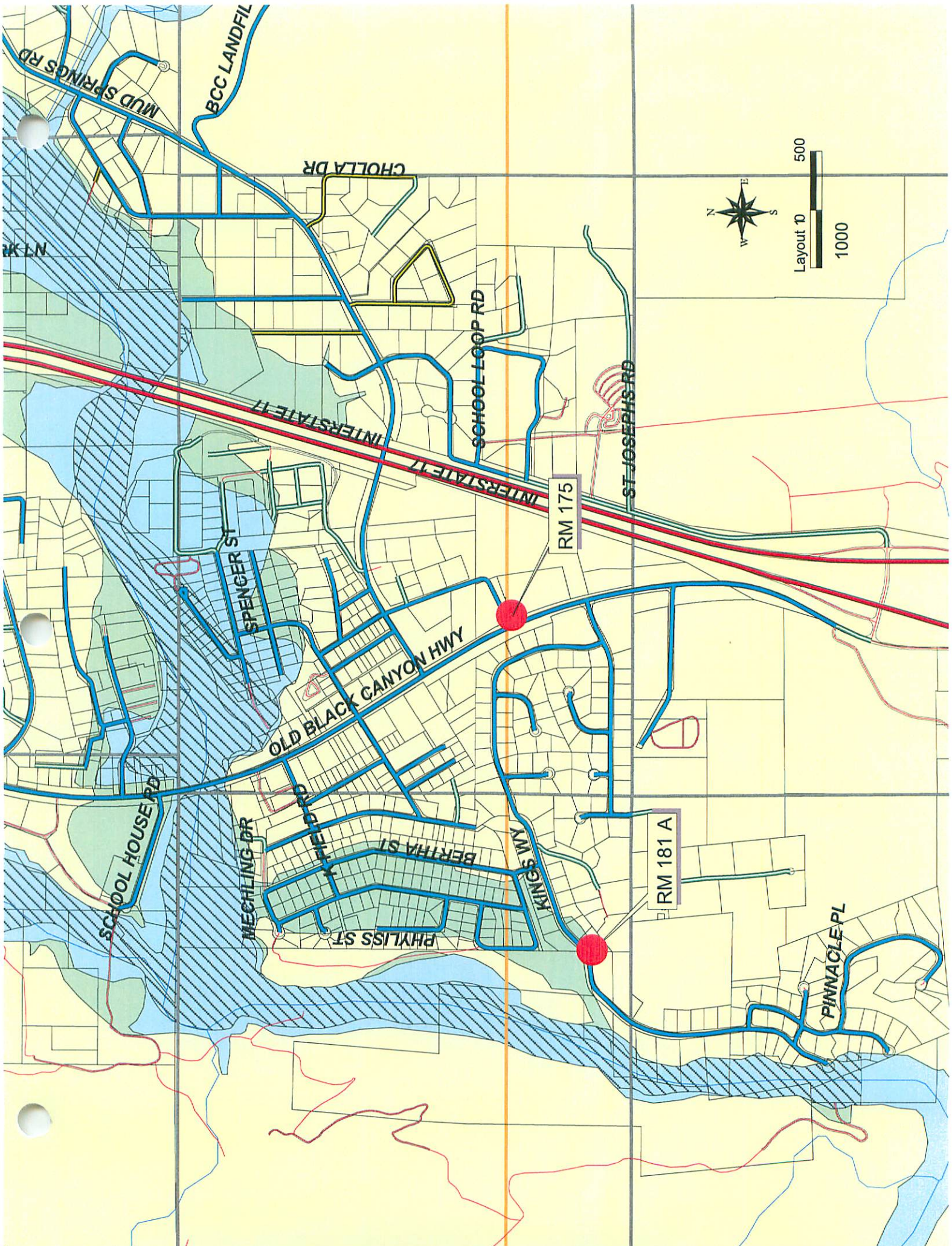
COMPANY NAME JDS ASSOCIATES, LLC
 STREET ADDRESS _____
 MAILING ADDRESS PO BOX 3240
 CITY, STATE, ZIP CAMP VERDE, AZ 86032
 TELEPHONE NUMBER (928) 567-8543





© 2002 DeLorme. 3-D TopoQuads®. Data copyright of content owner.
www.delorme.com





MUD SPRINGS RD

BCC LANDFIL

CHOLLA DR

SCHOOL LOOP RD

INTERSTATE 17

ST JOSEPHS RD

RM 175

SPENCER ST

OLD BLACK CANYON HWY

SCHOOL HOUSE RD

MECHLING DR

K FIELD RD

BERTHA ST

PHYLLIS ST

KINGS LN

RM 181 A

PINNACLE PL

