

ELEVATION REFERENCE MONUMENT

ERM: 22

Panel: 990

Elevation (NAVD88): 4396.42

Elevation (NGVD29): 4393.79

Latitude: 34°53'49" N

Longitude: 112°28'12" W

Description: Yavapai County Flood Control District aluminum capped rebar in concrete stamped "1411". From Paulden, Arizona, go north on Highway 89 approximately 0.8 mile to Laguna Trail., then west (left) on Laguna Trail approximately 0.3 mile to monument.

990

NATIONAL FLOOD INSURANCE PROGRAM

FIRM  **ORIGINAL**
FLOOD INSURANCE RATE MAP

YAVAPAI COUNTY,
ARIZONA AND
INCORPORATED AREAS

PANEL 990 OF 3925
(SEE MAP INDEX FOR PANELS NOT PRINTED)

<u>CONTAINS:</u> <u>COMMUNITY</u>	<u>NUMBER</u>	<u>PANEL</u>	<u>SUFFIX</u>
YAVAPAI COUNTY, UNINCORPORATED AREAS	040093	0990	F

MAP NUMBER
04025C0990 F

EFFECTIVE DATE:
JUNE 6, 2001

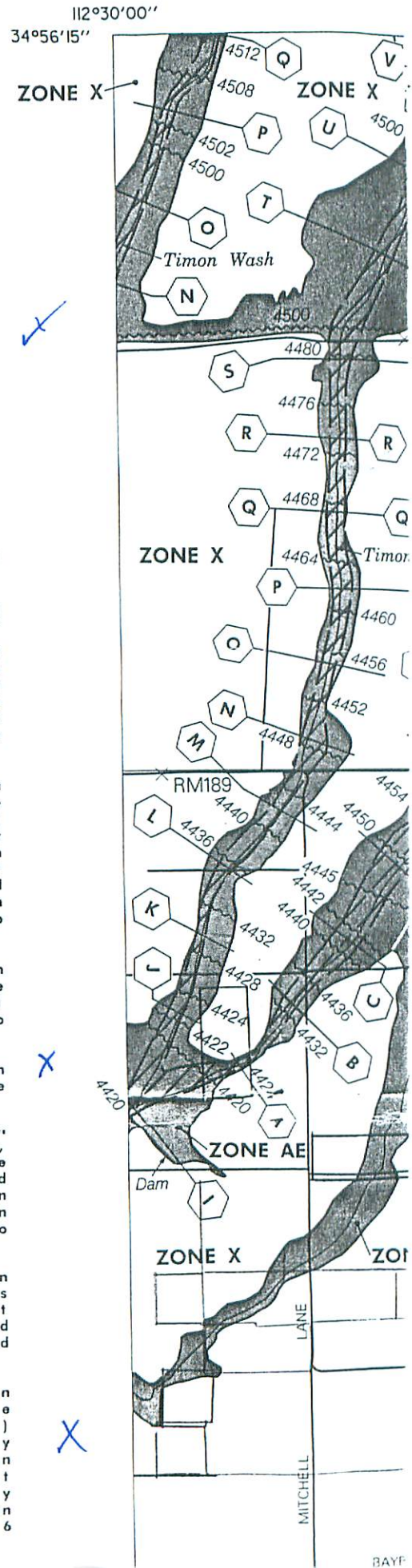


Federal Emergency Management Agency

0"

ELEVATION REFERENCE MARKS
 REFERENCE ELEVATION
 MARK (FEET NGVD) DESCRIPTION OF LOCATION

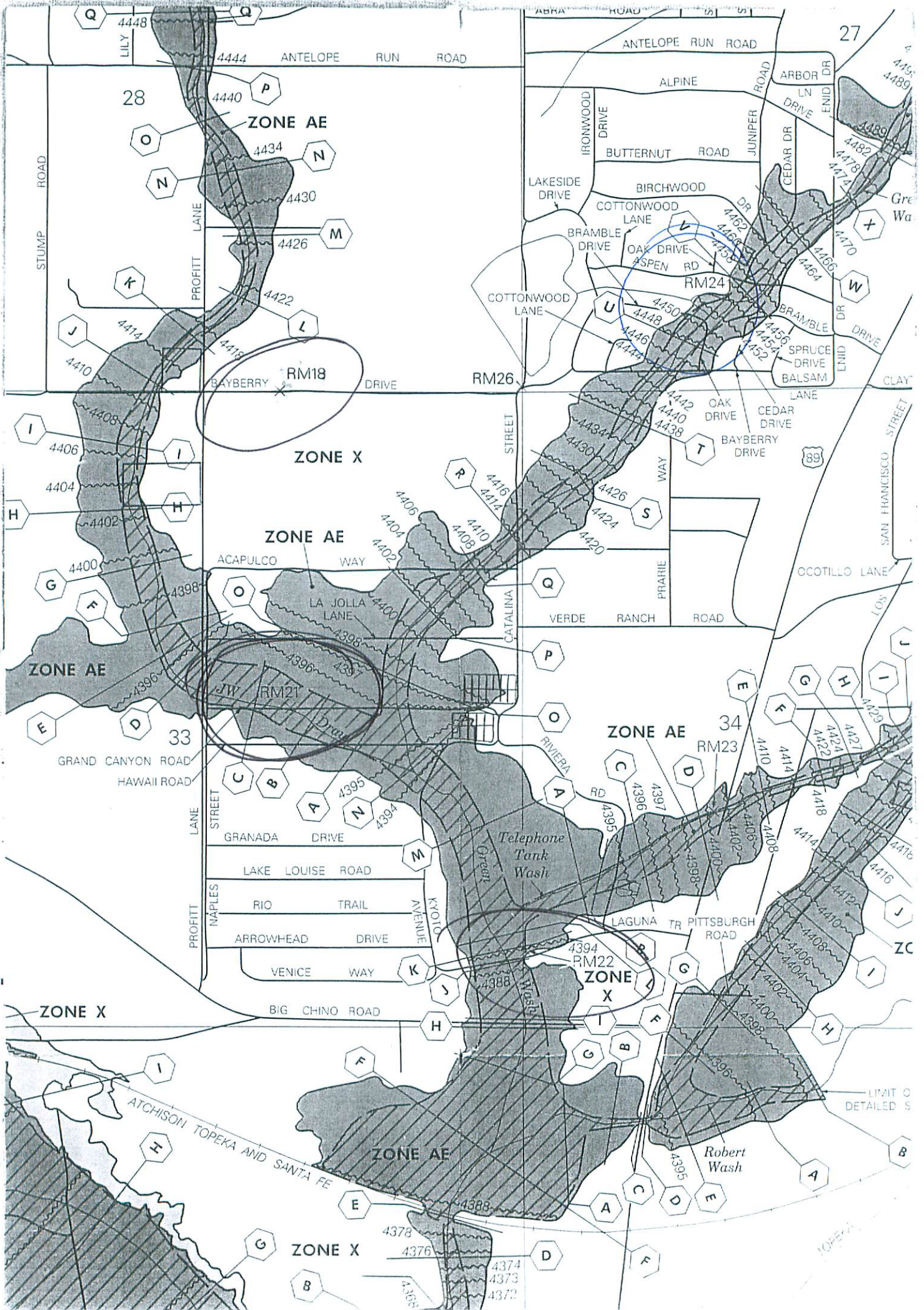
RM12	4371.24	Yavapai County Flood Control District, 1/2-inch rebar with aluminum cap stamped RM49-2, LS 12218, located 2 feet north of northwest corner of wood and steel railroad bridge over Big Chino Washington, near the northeast corner of Section 5 in T17N, R2W.
RM18	4414.64	From Paulden, Arizona, go north on Highway 89 approximately 0.6 mile to Big Chino Road, then west (left) on Big Chino Road approximately 1.3 miles to Patricia Road, then north (right) on Patricia Road approximately 0.7 mile to Bayberry Drive, then east (right) on Bayberry Drive approximately 0.6 mile to monument.
RM19	4405.42	From Paulden, Arizona, go north on Highway 89 approximately 0.6 mile to Big Chino Road, then west (left) on Big Chino Road approximately 1.3 miles to Patricia Road, then north (right) on Patricia Road approximately 0.7 mile to monument.
RM20	4491.87	From Paulden, Arizona, go north on Highway 89 approximately 0.6 mile to Big Chino Road, then west (left) on Big Chino Road approximately 1.3 miles to Patricia Road, then north (right) on Patricia Road approximately 1.8 miles to Ahonen Road, then east (right) on Ahonen Road approximately 0.7 mile to monument.
RM21	4393.82	From Paulden, Arizona, go north on Highway 89 approximately 0.6 mile to Big Chino Road, then west (left) on Big Chino Road approximately 0.75 mile to Naples Street, then north (right) on Naples Street approximately 0.5 mile to Grand Canyon Road, then east (right) on Grand Canyon Road 0.1 mile to monument.
RM22	4393.79	From Paulden, Arizona, go north on Highway 89 approximately 0.8 mile to Laguna Trail, then west (left) on Laguna Trail 0.3 mile to monument.
RM23	4400.46	From Paulden, Arizona, go north on Highway 89 approximately 1.0 mile to monument.
RM24	4155.70	From Paulden, Arizona, go north on Highway 89 approximately 1.8 miles, then west (left) on Bramble Drive approximately 0.1 mile to Enid Drive approximately 0.1 mile to Aspen Drive, then west (left) on Aspen Drive approximately 0.2 mile to monument.
RM25	4452.77	From Paulden, Arizona, go north on Highway 89 approximately 1.1 miles to Verde Ranch Road, then east (right) on Verde Ranch Road approximately 0.5 mile to old railroad grade and monument.
RM26	4439.11	From Paulden, Arizona, go north on Highway 89 approximately 0.6 mile to Big Chino Road, then west (left) on Big Chino Road approximately 0.75 mile to Naples Street, then north (right) on Naples Street approximately 0.9 mile to Bayberry Drive, then east (right) on Bayberry Drive approximately 0.6 mile to monument.

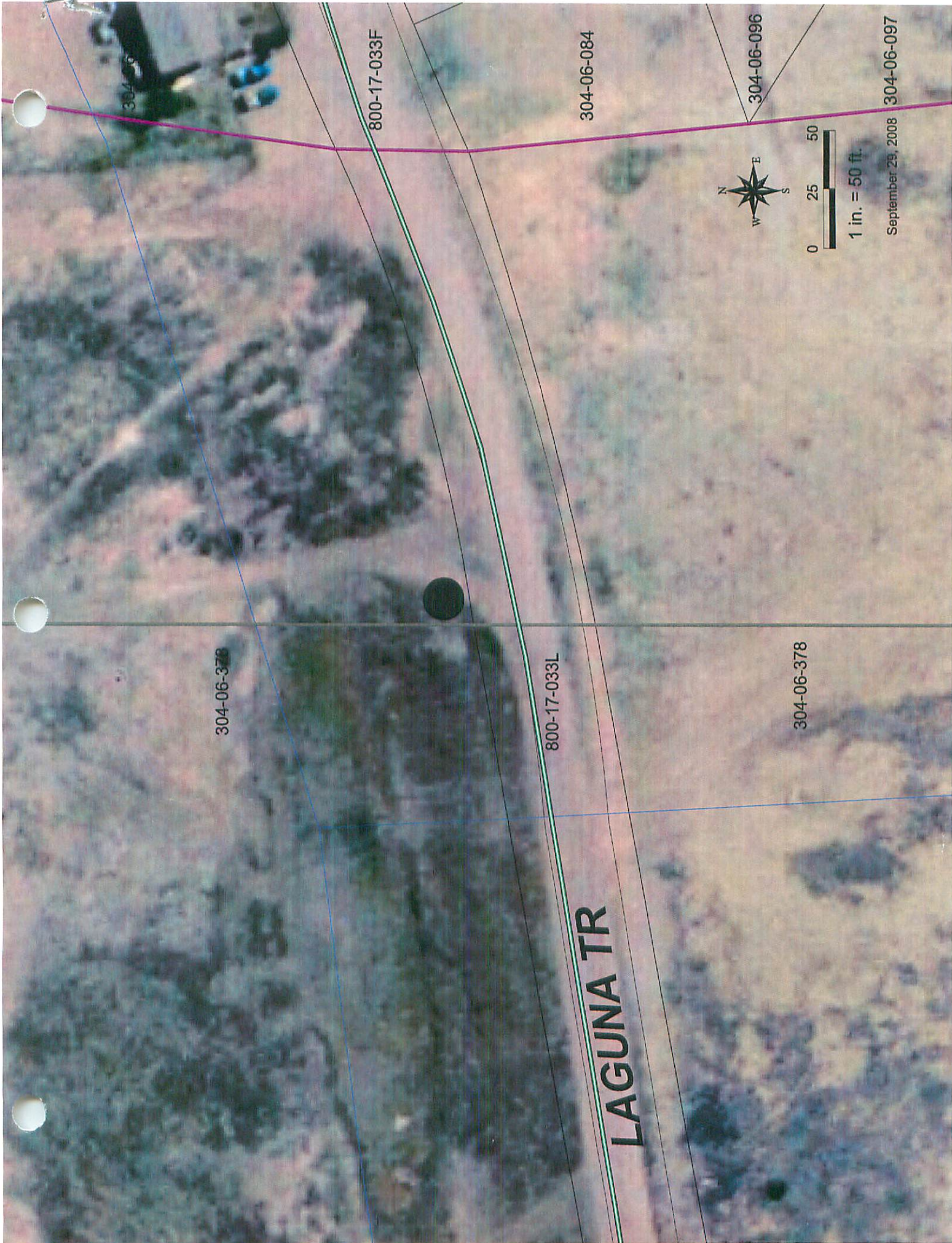


1

2

3





304-06-096

800-17-033F

304-06-084

304-06-096

304-06-378

800-17-033L

304-06-378

LAGUNA TR



1 in. = 50 ft.

September 29, 2008 304-06-097

