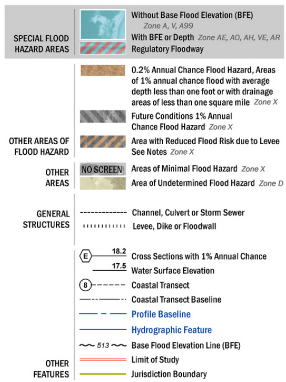


FLOOD HAZARD INFORMATION

SEE FIRM REPORT FOR DETAILED LEGEND AND INDEX MAP FOR FIRM PANEL LAYOUT
THE INFORMATION DEPICTED ON THIS MAP AND SUPPORTING DOCUMENTATION ARE ALSO AVAILABLE IN DIGITAL FORMAT AT [HTTP://MSC.FEMA.GOV](http://MSC.FEMA.GOV)



NOTES TO USERS

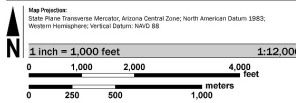
For information and questions about this Flood Insurance Rate Map (FIRM), available products associated with this FIRM, including historic versions, the current map date for each FIRM panel, how to order products, or the National Flood Insurance Program (NFIP) in general, please call the FEMA Map Information Exchange at 1-877-FEMA-8287 or visit the FEMA Flood Map Service Center website at www.fema.gov. Available products may include previously issued Letters of Map Change, a Flood Insurance Study Report, and/or digital versions of this map. Many of these products can be ordered or obtained directly from the website.

To determine if flood insurance is available in the community, contact your insurance agent or call the National Flood Insurance Program at 1-800-638-6625.

To obtain more detailed information in areas where Base Flood Elevations (BFEs) and/or Floodways have been determined, users are encouraged to consult the Flood Profiles and Floodway Data and/or Summary of Shaded Elevations tables contained within the Flood Insurance Study (FIS) report that accompanies this FIRM. Users should be aware that BFEs shown on the FIRM represent non-tidal water elevations. These BFEs do not represent flood elevations from storm surge and should not be used as the sole source of flood elevation information. Flood elevation data presented in the FIS report should be utilized in conjunction with the FIS for purposes of construction and/or floodplain management.

Base map information shown on this FIRM was derived from digital data provided by Yavapai County. Digital orthorectification was collected by the U.S. Department of Agriculture Farm Service Agency (2015) and by Digital Globe imagery (2014).

SCALE



PANEL LOCATOR

