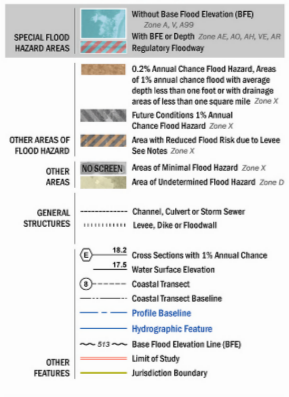


FLOOD HAZARD INFORMATION

SEE FIS REPORT FOR DETAILED LEGEND AND INDEX MAP FOR FIRM PANEL LAYOUT
THE INFORMATION DEPICTED ON THIS MAP AND SUPPORTING DOCUMENTATION ARE ALSO AVAILABLE IN DIGITAL FORMAT AT [HTTP://MSC.FEMA.GOV](http://MSC.FEMA.GOV)



NOTES TO USERS

For information and questions about this Flood Insurance Rate Map (FIRM), available products associated with this FIRM, including historic versions, the current map date for each FIRM panel, how to order products, or the National Flood Insurance Program (NFIP) in general, please call the FEMA Map Information Exchange at 1-877-FEMA-MAP (1-877-369-2627) or visit the FEMA Flood Map Service Center website at www.fema.gov. Available products may include previously issued Letters of Map Change, a Flood Insurance Study Report, and/or digital versions of this map. Many of these products can be ordered or obtained directly from the website.

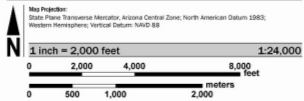
Communities seeking land use adjacent FIRM panels must obtain a current copy of the adjacent panel as well as the current FIRM index. These may be obtained directly from the Flood Map Service Center at the number listed above.

To determine if flood insurance is available in your community, contact your insurance agent or call the National Flood Insurance Program at 1-800-638-6633.

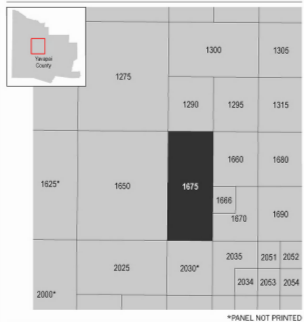
To obtain more detailed information in areas where Base Flood Elevations (BFEs) and/or floodways have been determined, users are encouraged to contact the Flood Profile and Elevation Data and/or Surface of Decision (SFED) offices identified within the Flood Insurance Study (FIS) report that accompanies this FIRM. Users should be aware that DF's shown on the FIRM represent rounded whole-foot elevations. These DF's are intended for flood insurance rating purposes only and should not be used as the sole source of flood elevation information. Additionally, flood elevation data presented in the FIS report should be utilized in compliance with the FIRM for purposes of construction and floodplain management.

Base map information shown on this FIRM was derived from digital data provided by Yavapai County Digital Orthophotography was collected by the U.S. Department of Agriculture Farm Service Agency (2016) and by Digital Globe Imagery (2014).

SCALE



PANEL LOCATOR



**NATIONAL FLOOD INSURANCE PROGRAM
 FLOOD INSURANCE RATE MAP
 YAVAPAI COUNTY,
 ARIZONA
 and Incorporated Areas
 PANEL 1675 of 3900**

Panel Contains:
 COMMUNITY
 YAVAPAI COUNTY

NUMBER PANEL SUFFIX
 04025C 1675 X

VERSION NUMBER
 2.3.3.2
 MAP NUMBER
 04025C1675H
 MAP REVISED
 FEBRUARY 15, 2019