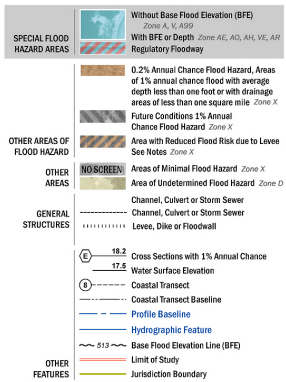


**FLOOD HAZARD INFORMATION**

SEE FIS REPORT FOR DETAILED LEGEND AND INDEX MAP FOR FIRM PANEL LOCUS  
**THE INFORMATION DEPICTED ON THIS MAP AND SUPPORTING DOCUMENTATION ARE ALSO AVAILABLE IN DIGITAL FORMAT AT [HTTP://WWW.FEMA.GOV](http://www.fema.gov)**



**NOTES TO USERS**

For information and questions about this Flood Insurance Rate Map (FIRM), available products associated with this FIRM, including historic versions, the current map data for each FIRM panel, how to order products, or the National Flood Insurance Program (NFIP) in general, please call the FEMA Map Information Exchange at 1-877-FEMA-MAP (1-877-338-2671) or visit the FEMA Flood Map Service Center website at <http://www.fema.gov>. Available products may include previously issued Letters of Map Change, a Flood Insurance Study Report, and/or digital versions of this map. Many of these products can be ordered or obtained directly from the website.

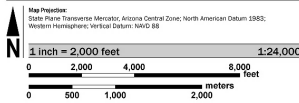
Communities occupying land or adjacent FIRM panels must obtain a current copy of the adjacent panel as well as the current FIRM index. These may be ordered directly from the Flood Map Service Center at the number listed above.

For community and countywide map data refer to the Flood Insurance Study report for this jurisdiction.

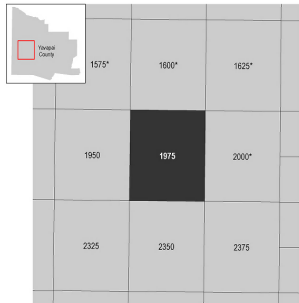
To determine flood insurance availability in this community, contact your insurance agent or call the National Flood Insurance Program at 1-800-638-6625.

Base map information shown on this FIRM was derived from digital data provided by Yavapai County. Digital orthorectification was conducted by the U.S. Department of Agriculture Farm Service Agency (2015) and by Digital Globe imagery (2014).

**SCALE**



**PANEL LOCATOR**



**NATIONAL FLOOD INSURANCE PROGRAM**  
**FLOOD INSURANCE RATE MAP**  
**YAVAPAI COUNTY, ARIZONA**  
 and Incorporated Areas  
**PANEL 1975 of 3900**

Panel Contains:  
 COMMUNITY: YAVAPAI COUNTY  
 NUMBER: 04025C  
 PANEL SUFFIX: 1975 X

VERSION NUMBER: 2.3.3.2  
 MAP NUMBER: 04025C1975H  
 MAP REVISED: FEBRUARY 15, 2019