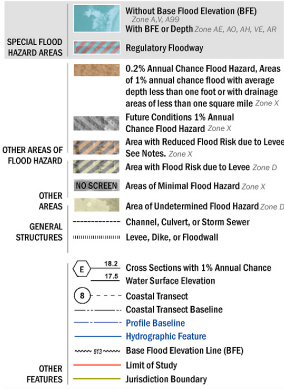


FLOOD HAZARD INFORMATION

SEE HIS REPORT FOR DETAILED LEGEND AND INDEX MAP FOR FIRM PANEL LAYOUT. THE INFORMATION DEPICTED ON THIS MAP AND SUPPORTING DOCUMENTATION ARE ALSO AVAILABLE IN DIGITAL FORMAT AT [HTTPS://MSC.FEMA.GOV](https://msc.fema.gov)



NOTES TO USERS

For information and questions about this Flood Insurance Rate Map (FIRM), available products associated with the FIRM, including historic versions, the current map data for each FIRM panel, please refer to the FEMA Map Information Center at 1-877-FEMA-MAP (1-877-368-2627) or visit the FEMA Flood Map Service Center website at <http://floodmaps.fema.gov>. Available products may include previously issued Letters of Map Change, a Flood Insurance Study Report, and/or digital versions of this map. Many of these products can be ordered or obtained directly from the website.

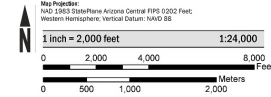
For community and countywide map dates refer to the Flood Insurance Study Report for this jurisdiction.

Comments concerning best on adjacent FIRM panels must obtain a current copy of the adjacent panel as well as the current FIRM info. These may be ordered directly from the Flood Map Service Center at the number listed above.

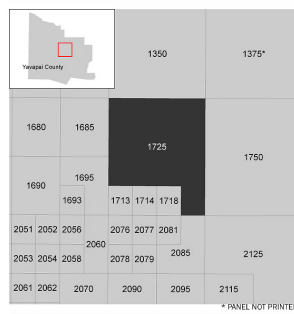
To determine if flood insurance is available in this community, contact your insurance agent or call the National Flood Insurance Program at 1-800-685-8623.

Some map information shown on this FIRM was provided in digital format by the United States Geospatial Survey (USGS). This information was derived from digital orthorectified data at a resolution from photography dated 2019.

SCALE



PANEL LOCATOR



NATIONAL FLOOD INSURANCE PROGRAM
FLOOD INSURANCE RATE MAP

YAVAPAI COUNTY, ARIZONA
AND INCORPORATED AREAS

PANEL 1725 of 3900

Panel Contains:

COMMUNITY	NUMBER	PANEL	SUFFIX
CHINO VALLEY, TOWN	040094	1725	H
PRESCOTT VALLEY, TOWN	040121	1725	H
TOWN OF YAVAPAI COUNTY	040093	1725	H

VERSION NUMBER: 2.3.3.0
MAP NUMBER: 04025C1725H
MAP REVISED: AUGUST 24, 2021