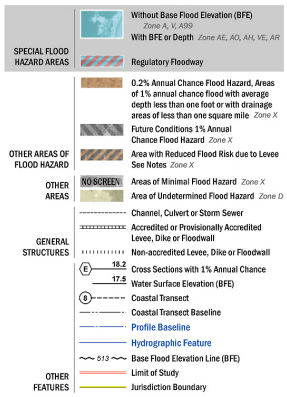


FLOOD HAZARD INFORMATION

SEE FIS REPORT FOR DETAILED LEGEND AND INDEX MAP FOR FIRM PANEL LAYOUT
THE INFORMATION DEPICTED ON THIS MAP AND SUPPORTING DOCUMENTATION ARE ALSO AVAILABLE IN DIGITAL FORMAT AT [HTTP://MSC.FEMA.GOV](http://msc.fema.gov)



NOTES TO USERS

For information and questions about this map, available products associated with this FIRM including historic versions of the FIRM, how to order products or the National Flood Insurance Program in general, please call the FEMA Map Information Exchange at 1-877-FEMA-MAP (1-877-336-6272) or visit the FEMA Map Service Center website at <http://msc.fema.gov>. Available products may include previously issued Letters of Map Change, a Flood Insurance Study Report, and/or digital versions of this map. Many of these products can be printed or downloaded directly from the website. Users may determine the current map date for each FIRM panel by visiting the FEMA Map Service Center website or by calling the FEMA Map Information Exchange.

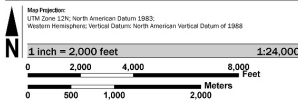
Communities acquiring land or adjacent FIRM panels must obtain a current copy of the adjacent panel as well as the current FIRM data. These may be ordered directly from the Map Service Center at the number listed above.

For community and countywide map dates refer to the Flood Insurance Study report for this jurisdiction.

To determine if flood insurance is available in this community, contact your insurance agent or call the National Flood Insurance Program at 1-800-438-6220.

Base map information shown on this FIRM was derived from digital orthophotography published by the U.S. Department of Agriculture Farm Service Agency. This imagery was flown in 2010 and was processed with a 1-meter ground sample distance.

SCALE



PANEL LOCATOR

