

VERDE RIVER FLOOD HAZARD  
ASSESSMENT IN SUPPORT OF A  
FLOODPLAIN REDELINEATION  
FOR YAVAPAI COUNTY, ARIZONA  
YCFCD PROJECT NUMBER: FC0139  
HDR PROJECT NUMBER: 114474



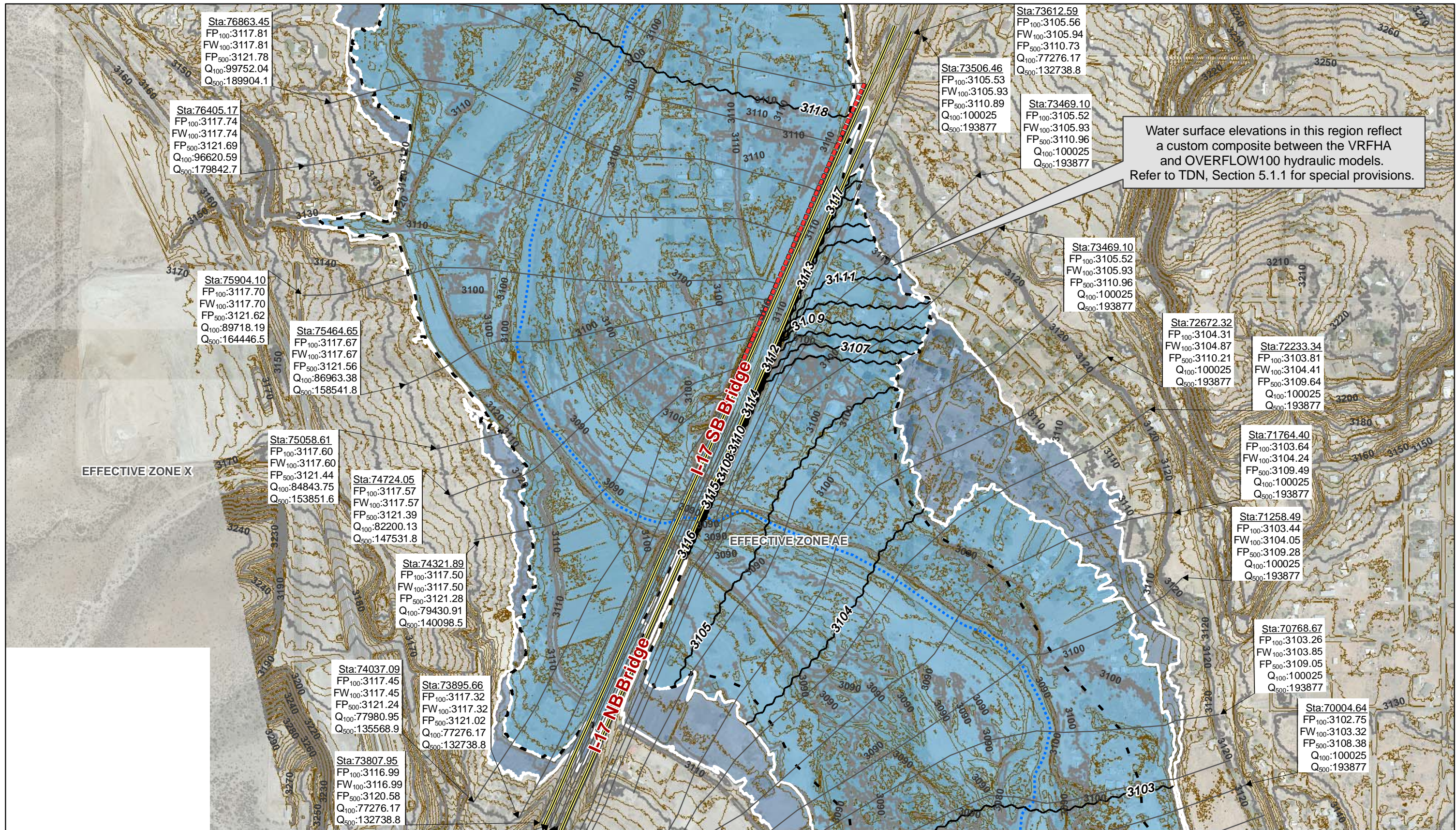
**HDR**  
3200 EAST CAMELBACK ROAD, SUITE 350  
PHOENIX, AZ 85018-2311  
(602) 522-7700

— EXISTING BRIDGE

N  
SCALE: 1" = 400'

**10TH STREET BRIDGE**  
**REFER TO WORKMAP SHEET 2**  
**BRIDGE DETAIL SHEET**  
JANUARY 2011





Water surface elevations in this region reflect a custom composite between the VRFHA and OVERFLOW100 hydraulic models. Refer to TDN, Section 5.1.1 for special provisions.

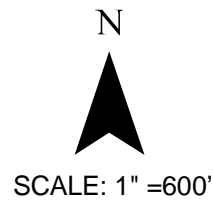
EFFECTIVE ZONE X

EFFECTIVE ZONE AE

VERDE RIVER FLOOD HAZARD ASSESSMENT IN SUPPORT OF A FLOODPLAIN REDELINEATION FOR YAVAPAI COUNTY, ARIZONA  
YCFCD PROJECT NUMBER: FC0139  
HDR PROJECT NUMBER: 114474

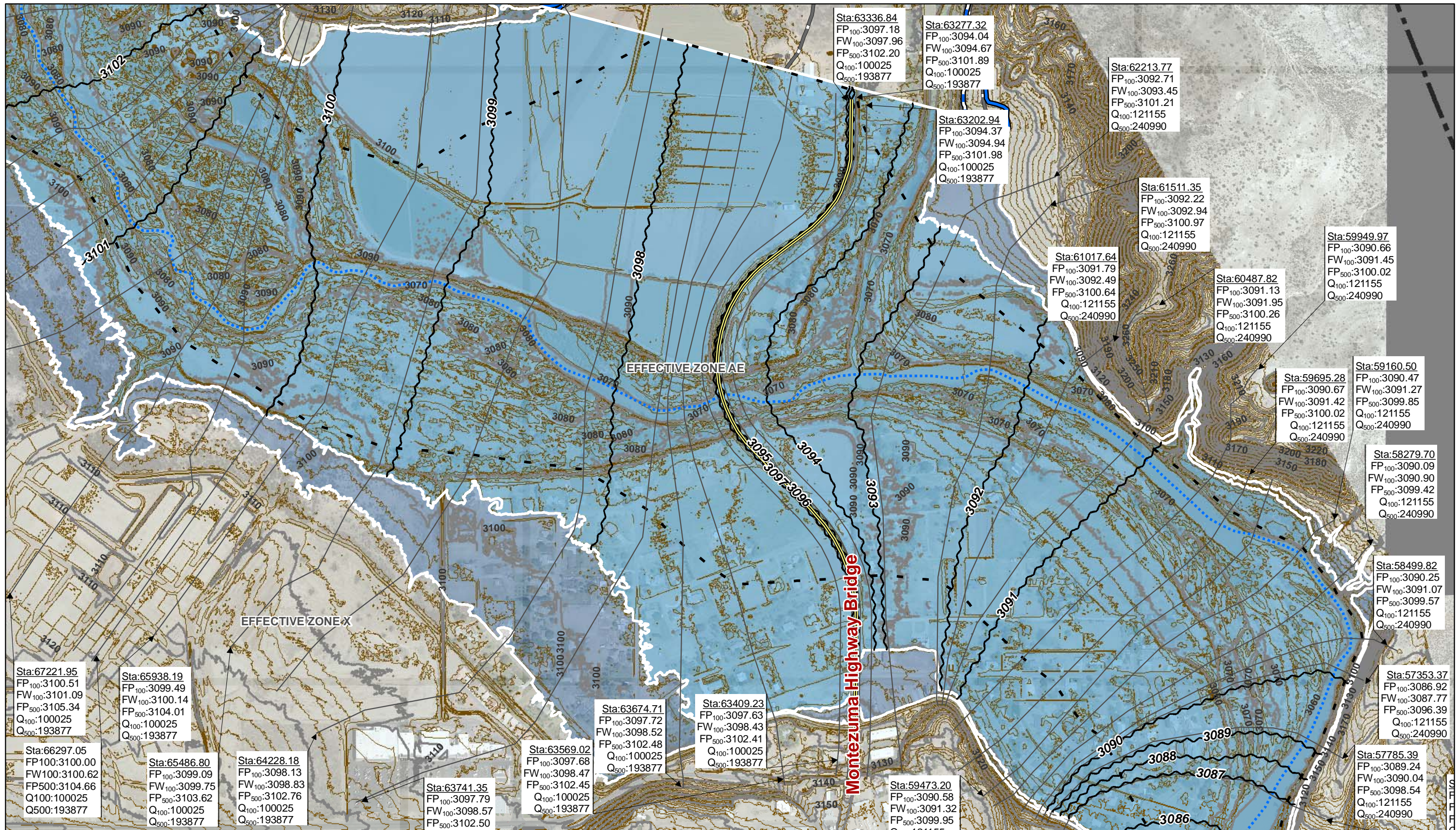


EXISTING BRIDGE



I-17 BRIDGE REFER TO WORKMAP SHEET 10  
BRIDGE DETAIL SHEET  
JANUARY 2011





VERDE RIVER FLOOD HAZARD ASSESSMENT IN SUPPORT OF A FLOODPLAIN REDELINEATION FOR YAVAPAI COUNTY, ARIZONA  
 YCFCD PROJECT NUMBER: FC0139  
 HDR PROJECT NUMBER: 114474



**HDR**  
 3200 EAST CAMELBACK ROAD, SUITE 350  
 PHOENIX, AZ 85018-2311  
 (602) 522-7700

— EXISTING BRIDGE

N  
  
 SCALE: 1" = 600'

**MONTEZUMA HIGHWAY BRIDGE  
 REFER TO WORKMAP SHEET 10**

**BRIDGE DETAIL SHEET  
 JANUARY 2011**

Sta:67221.95  
 FP<sub>100</sub>:3100.51  
 FW<sub>100</sub>:3101.09  
 FP<sub>500</sub>:3105.34  
 Q<sub>100</sub>:100025  
 Q<sub>500</sub>:193877

Sta:65938.19  
 FP<sub>100</sub>:3099.49  
 FW<sub>100</sub>:3100.14  
 FP<sub>500</sub>:3104.01  
 Q<sub>100</sub>:100025  
 Q<sub>500</sub>:193877

Sta:65486.80  
 FP<sub>100</sub>:3099.09  
 FW<sub>100</sub>:3099.75  
 FP<sub>500</sub>:3103.62  
 Q<sub>100</sub>:100025  
 Q<sub>500</sub>:193877

Sta:64228.18  
 FP<sub>100</sub>:3098.13  
 FW<sub>100</sub>:3098.83  
 FP<sub>500</sub>:3102.76  
 Q<sub>100</sub>:100025  
 Q<sub>500</sub>:193877

Sta:63741.35  
 FP<sub>100</sub>:3097.79  
 FW<sub>100</sub>:3098.57  
 FP<sub>500</sub>:3102.50

Sta:63569.02  
 FP<sub>100</sub>:3097.68  
 FW<sub>100</sub>:3098.47  
 FP<sub>500</sub>:3102.45  
 Q<sub>100</sub>:100025  
 Q<sub>500</sub>:193877

Sta:63674.71  
 FP<sub>100</sub>:3097.72  
 FW<sub>100</sub>:3098.52  
 FP<sub>500</sub>:3102.48  
 Q<sub>100</sub>:100025  
 Q<sub>500</sub>:193877

Sta:63409.23  
 FP<sub>100</sub>:3097.63  
 FW<sub>100</sub>:3098.43  
 FP<sub>500</sub>:3102.41  
 Q<sub>100</sub>:100025  
 Q<sub>500</sub>:193877

Sta:59473.20  
 FP<sub>100</sub>:3090.58  
 FW<sub>100</sub>:3091.32  
 FP<sub>500</sub>:3099.95

Sta:63336.84  
 FP<sub>100</sub>:3097.18  
 FW<sub>100</sub>:3097.96  
 FP<sub>500</sub>:3102.20  
 Q<sub>100</sub>:100025  
 Q<sub>500</sub>:193877

Sta:63277.32  
 FP<sub>100</sub>:3094.04  
 FW<sub>100</sub>:3094.67  
 FP<sub>500</sub>:3101.89  
 Q<sub>100</sub>:100025  
 Q<sub>500</sub>:193877

Sta:63202.94  
 FP<sub>100</sub>:3094.37  
 FW<sub>100</sub>:3094.94  
 FP<sub>500</sub>:3101.98  
 Q<sub>100</sub>:100025  
 Q<sub>500</sub>:193877

Sta:61017.64  
 FP<sub>100</sub>:3091.79  
 FW<sub>100</sub>:3092.49  
 FP<sub>500</sub>:3100.64  
 Q<sub>100</sub>:121155  
 Q<sub>500</sub>:240990

Sta:62213.77  
 FP<sub>100</sub>:3092.71  
 FW<sub>100</sub>:3093.45  
 FP<sub>500</sub>:3101.21  
 Q<sub>100</sub>:121155  
 Q<sub>500</sub>:240990

Sta:61511.35  
 FP<sub>100</sub>:3092.22  
 FW<sub>100</sub>:3092.94  
 FP<sub>500</sub>:3100.97  
 Q<sub>100</sub>:121155  
 Q<sub>500</sub>:240990

Sta:60487.82  
 FP<sub>100</sub>:3091.13  
 FW<sub>100</sub>:3091.95  
 FP<sub>500</sub>:3100.26  
 Q<sub>100</sub>:121155  
 Q<sub>500</sub>:240990

Sta:59949.97  
 FP<sub>100</sub>:3090.66  
 FW<sub>100</sub>:3091.45  
 FP<sub>500</sub>:3100.02  
 Q<sub>100</sub>:121155  
 Q<sub>500</sub>:240990

Sta:59695.28  
 FP<sub>100</sub>:3090.67  
 FW<sub>100</sub>:3091.42  
 FP<sub>500</sub>:3100.02  
 Q<sub>100</sub>:121155  
 Q<sub>500</sub>:240990

Sta:59160.50  
 FP<sub>100</sub>:3090.47  
 FW<sub>100</sub>:3091.27  
 FP<sub>500</sub>:3099.85  
 Q<sub>100</sub>:121155  
 Q<sub>500</sub>:240990

Sta:58279.70  
 FP<sub>100</sub>:3090.09  
 FW<sub>100</sub>:3090.90  
 FP<sub>500</sub>:3099.42  
 Q<sub>100</sub>:121155  
 Q<sub>500</sub>:240990

Sta:58499.82  
 FP<sub>100</sub>:3090.25  
 FW<sub>100</sub>:3091.07  
 FP<sub>500</sub>:3099.57  
 Q<sub>100</sub>:121155  
 Q<sub>500</sub>:240990

Sta:57353.37  
 FP<sub>100</sub>:3086.92  
 FW<sub>100</sub>:3087.77  
 FP<sub>500</sub>:3096.39  
 Q<sub>100</sub>:121155  
 Q<sub>500</sub>:240990

Sta:57785.39  
 FP<sub>100</sub>:3089.24  
 FW<sub>100</sub>:3090.04  
 FP<sub>500</sub>:3098.54  
 Q<sub>100</sub>:121155  
 Q<sub>500</sub>:240990