

NG911 Countywide Meeting

Welcome to the second meeting!

1

Agenda for today

- ❖ Current County-wide Workflow
 - Boundaries
 - Collaboration
 - Demarcation Points
 - Include any topic from Prescott & Prescott Valley
- ❖ Wrap up

Boundaries for Next Generation

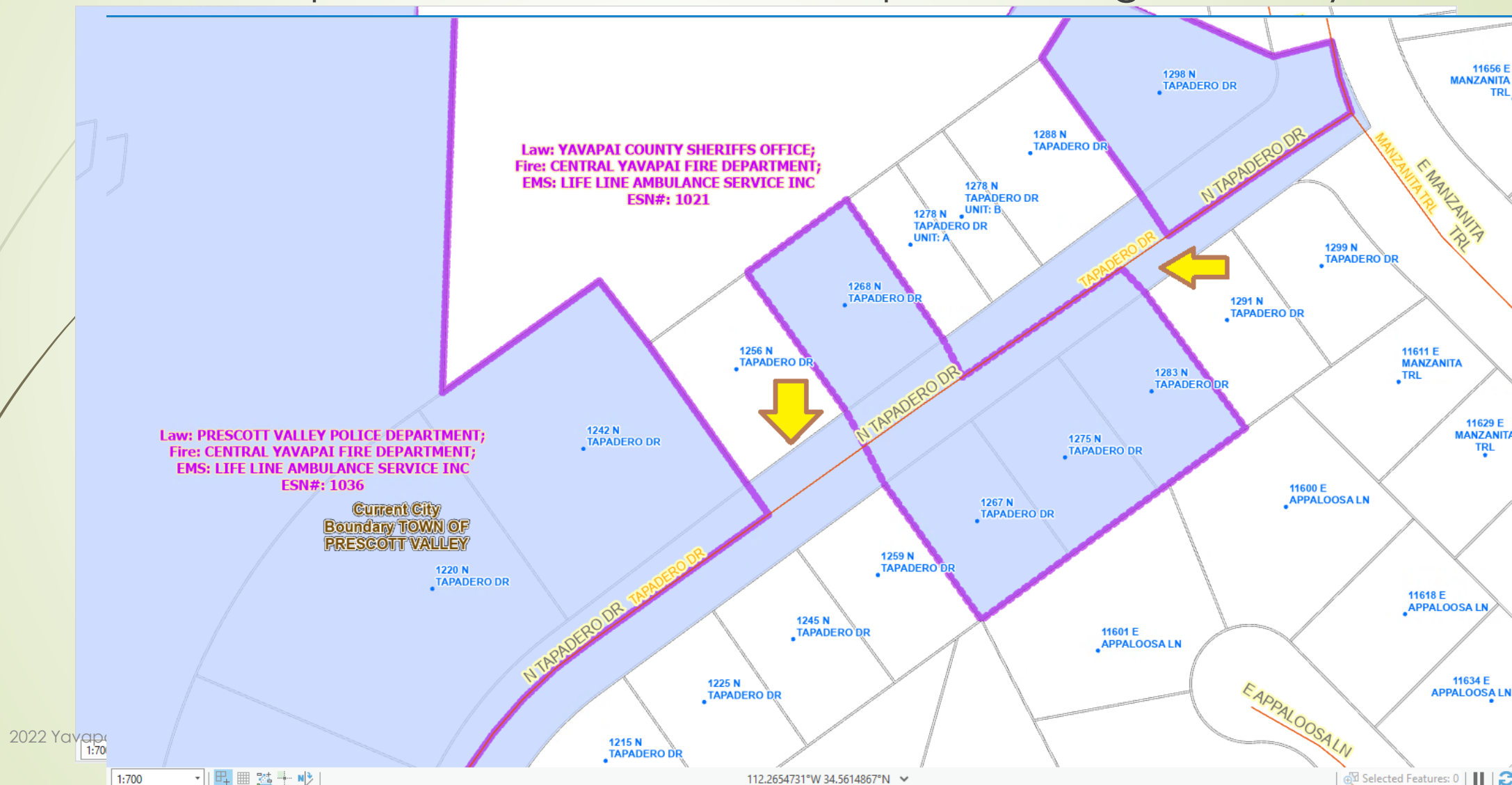
- ❖ Boundary describe in individual layer whom to dispatch for a single dispatchable location:
 - Law enforcement agency to dispatch
 - Fire agency to dispatch
 - Medical services ambulance to dispatch
 - Which dispatch center PSAP boundary is 9-1-1 call routed.
 - Both Streets & addresses correct matching boundary attributes for mandatory & conditional requirements.

Boundaries

- ❖ City boundary changes for Law enforcement
 - Example, city of Prescott owns Watson and Willow Lakes.
 - Changed the city boundary that affects the Service Boundary (SB) to have all city owned parcels as part of the law SB.
- ❖ Service Boundaries (SB) snap to street centerlines, not parcel or right-of-way.
- ❖ Streets split at all legal boundary changes.
- ❖ SB coordinate 9-1-1 responses, not necessarily represent legally defined boundaries, also not hand-shake agreements.

Boundaries Examples

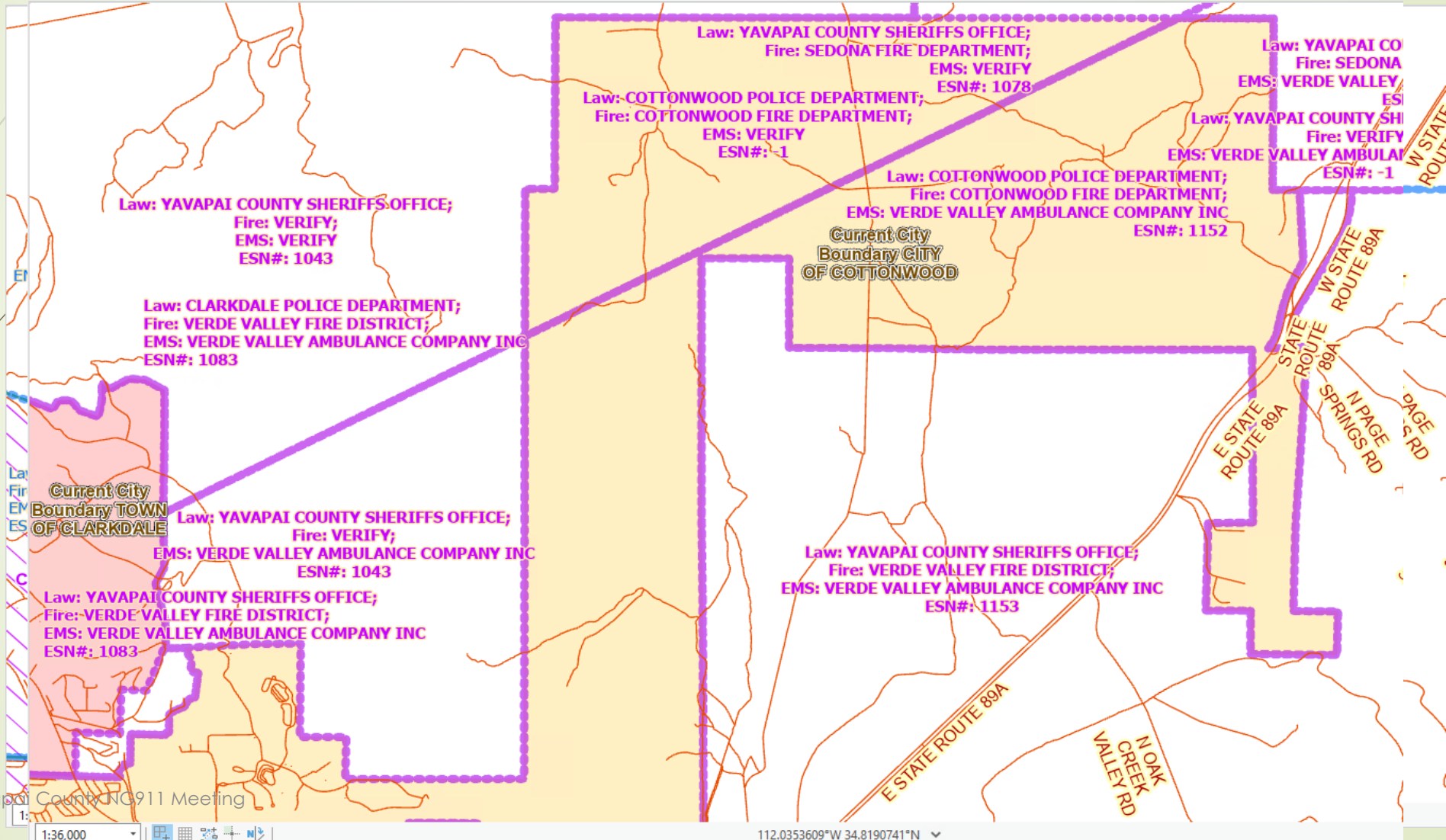
- SB snap to street centerlines, not parcel or right-of-way



Boundaries Examples

6

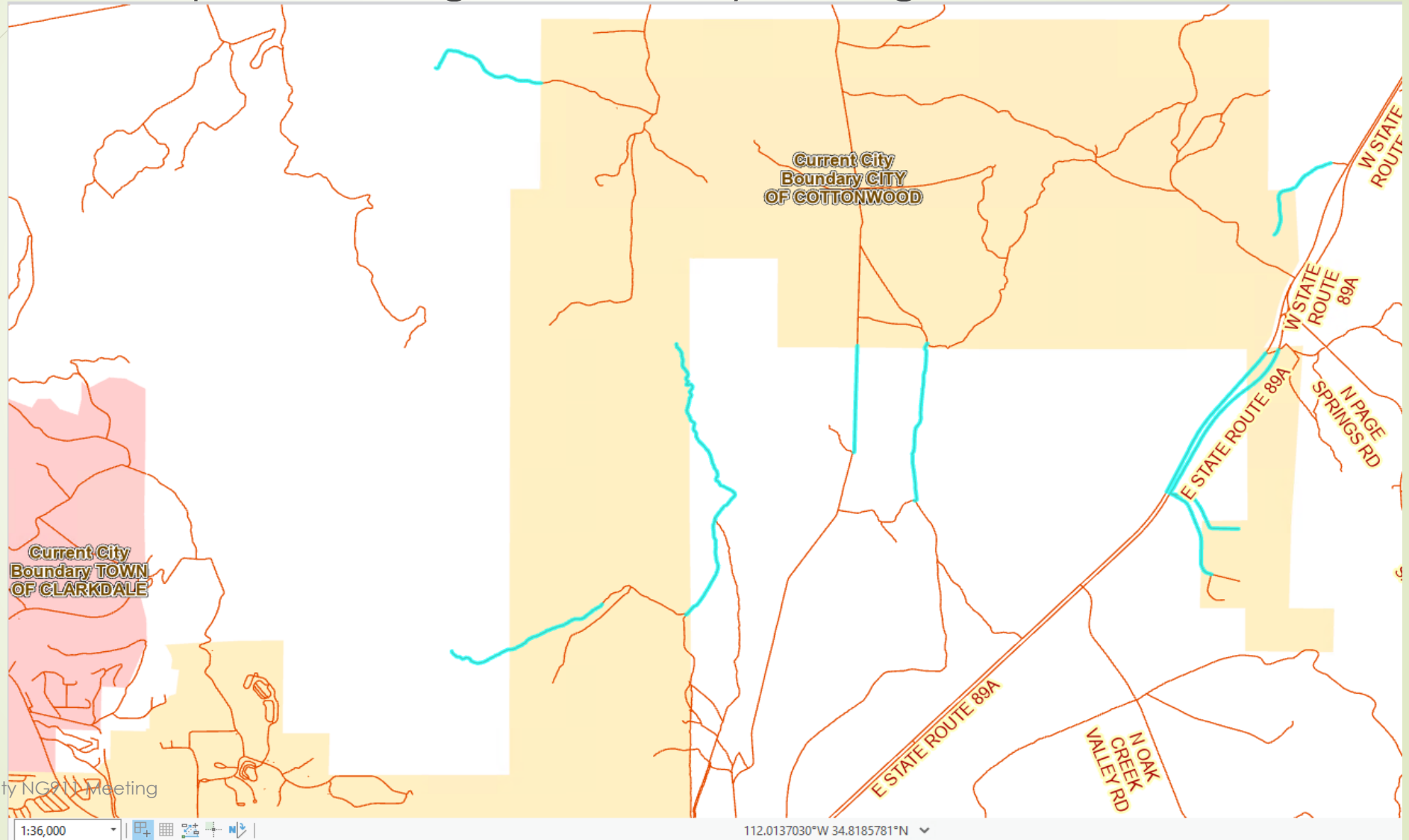
- Change law SB from annexation.



Boundaries Examples

7

- Streets split at all legal boundary changes.

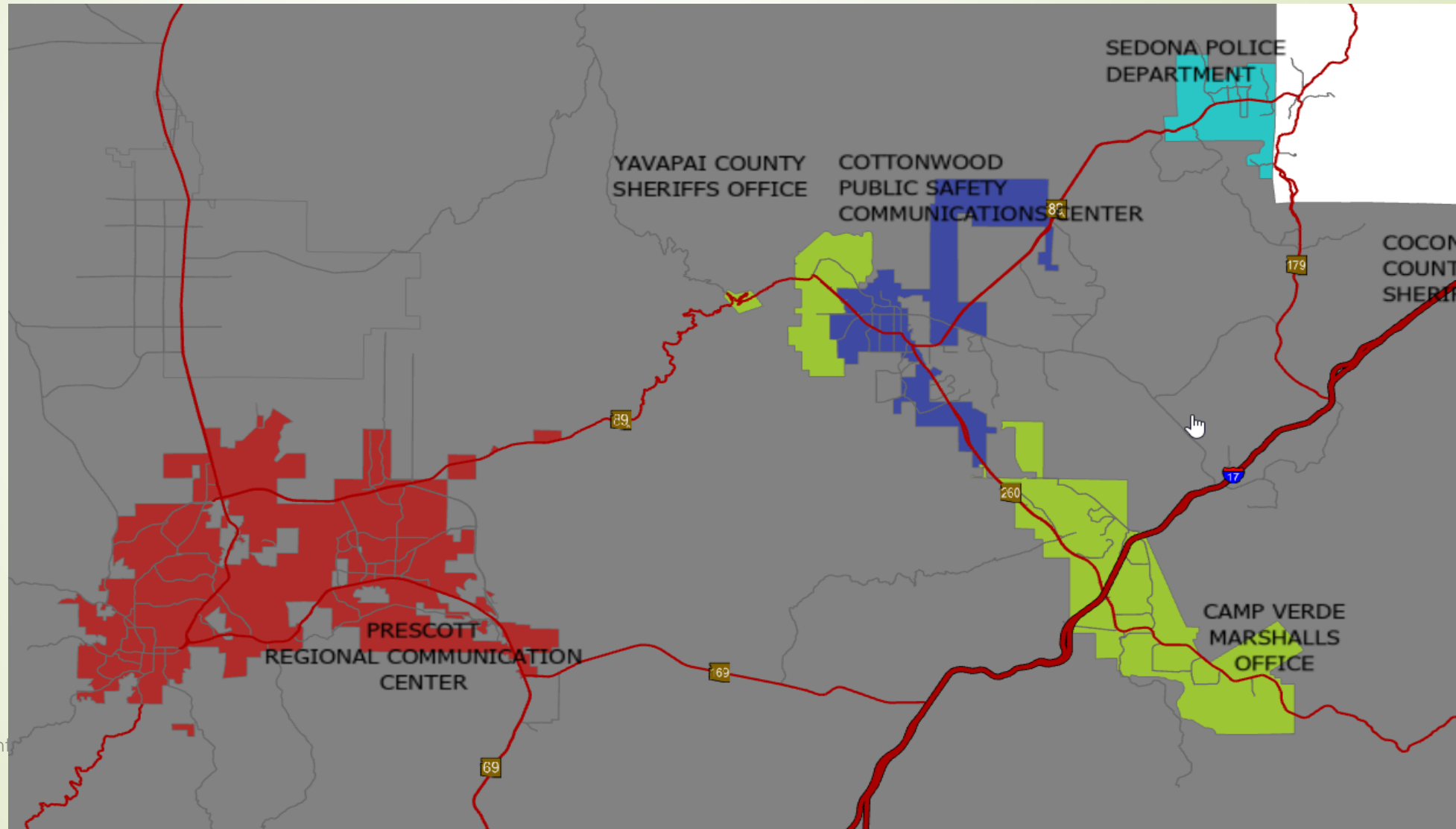


Boundaries Relationships

8

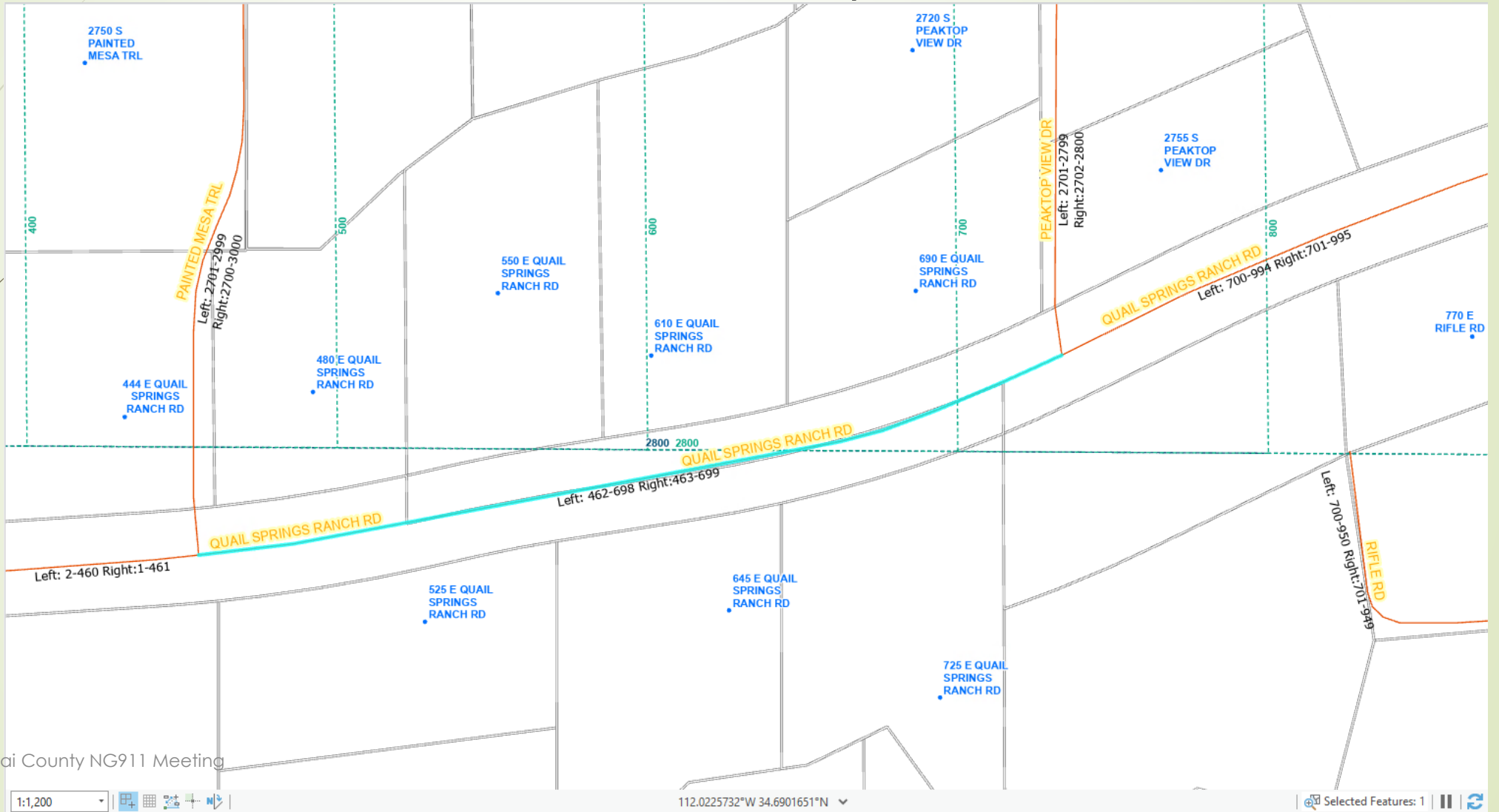
❖ Boundary relates to the following:

- Street Centerlines
- Addresses
- PSAP Boundaries



Boundaries Examples

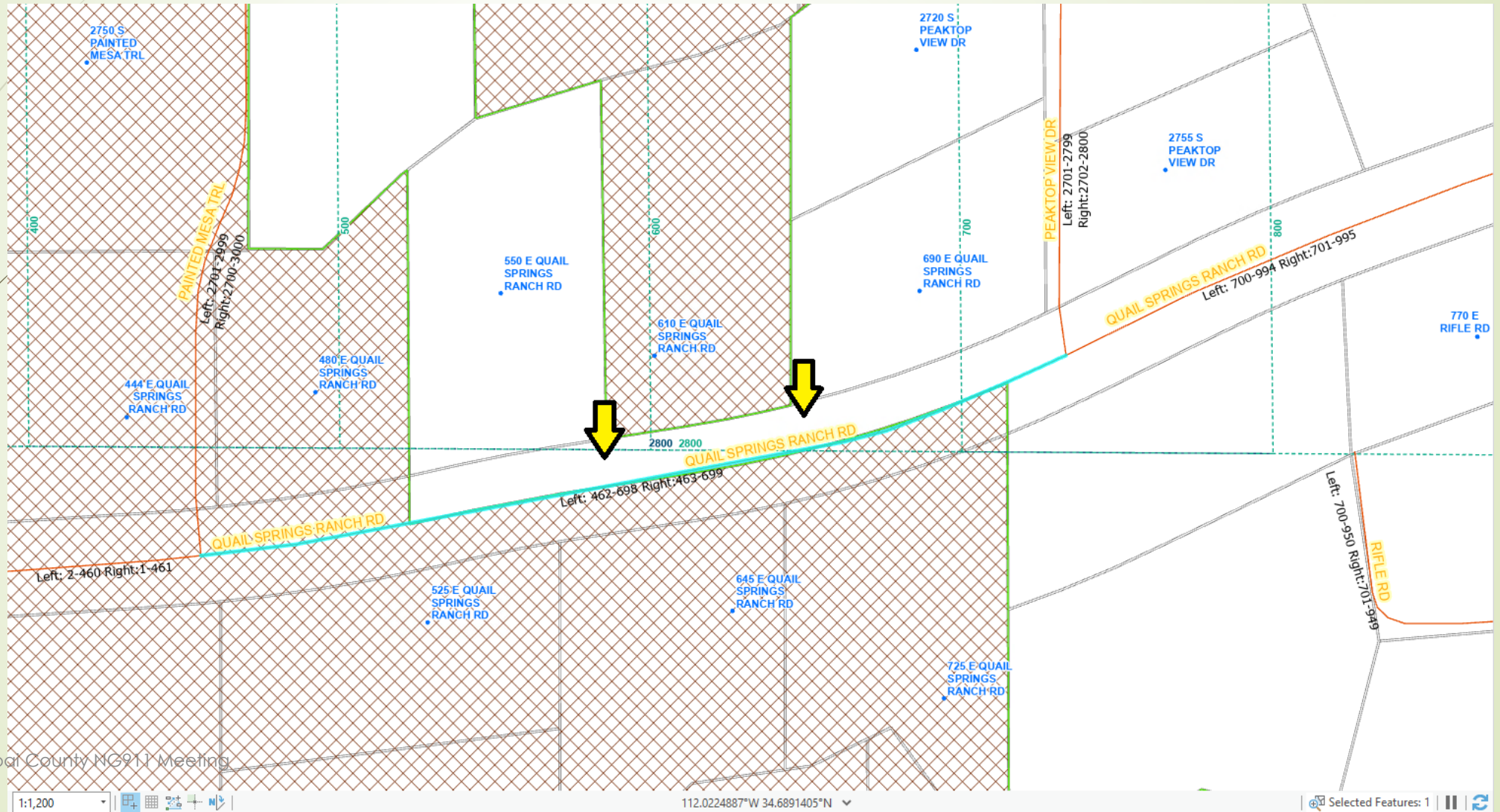
- Street at fire service boundary



Boundaries Examples

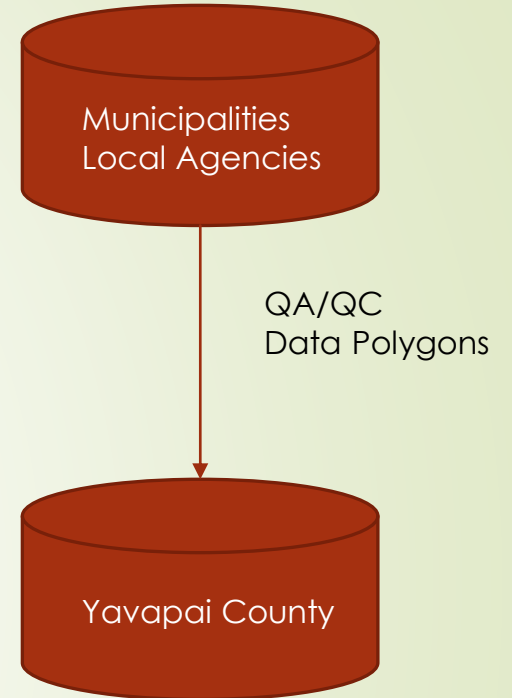
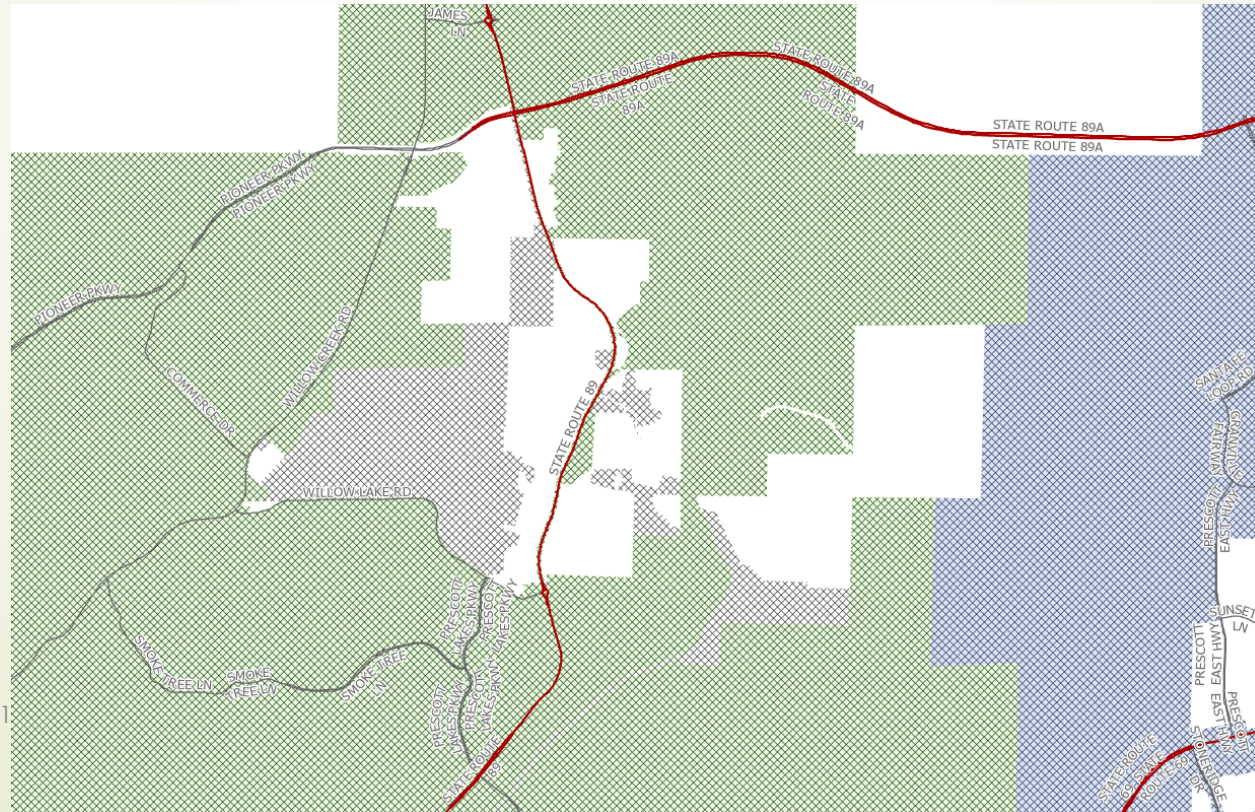
10

- Street at fire service boundary



What's expected of you?

- ▶ City/town owned right-of-ways and parcels become part of the Law Service Boundary polygon.
- ▶ City must split streets at jurisdiction boundaries
- ▶ 1Spatial 1Data Gateway validations will help show these errors from RCL – BOUNDARY validation.



Boundaries Examples

12

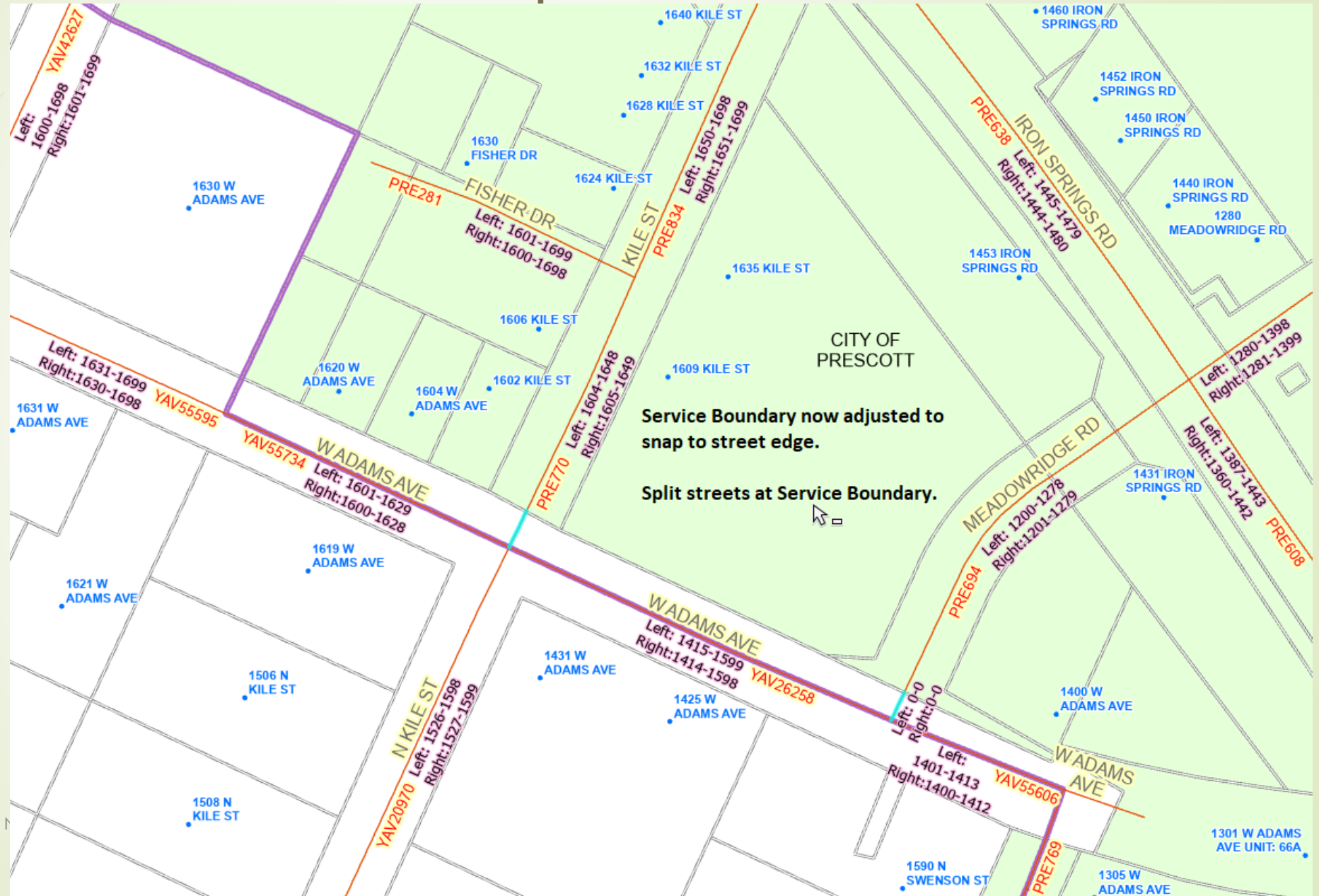
- Where to split a road at a boundary



Boundaries Examples

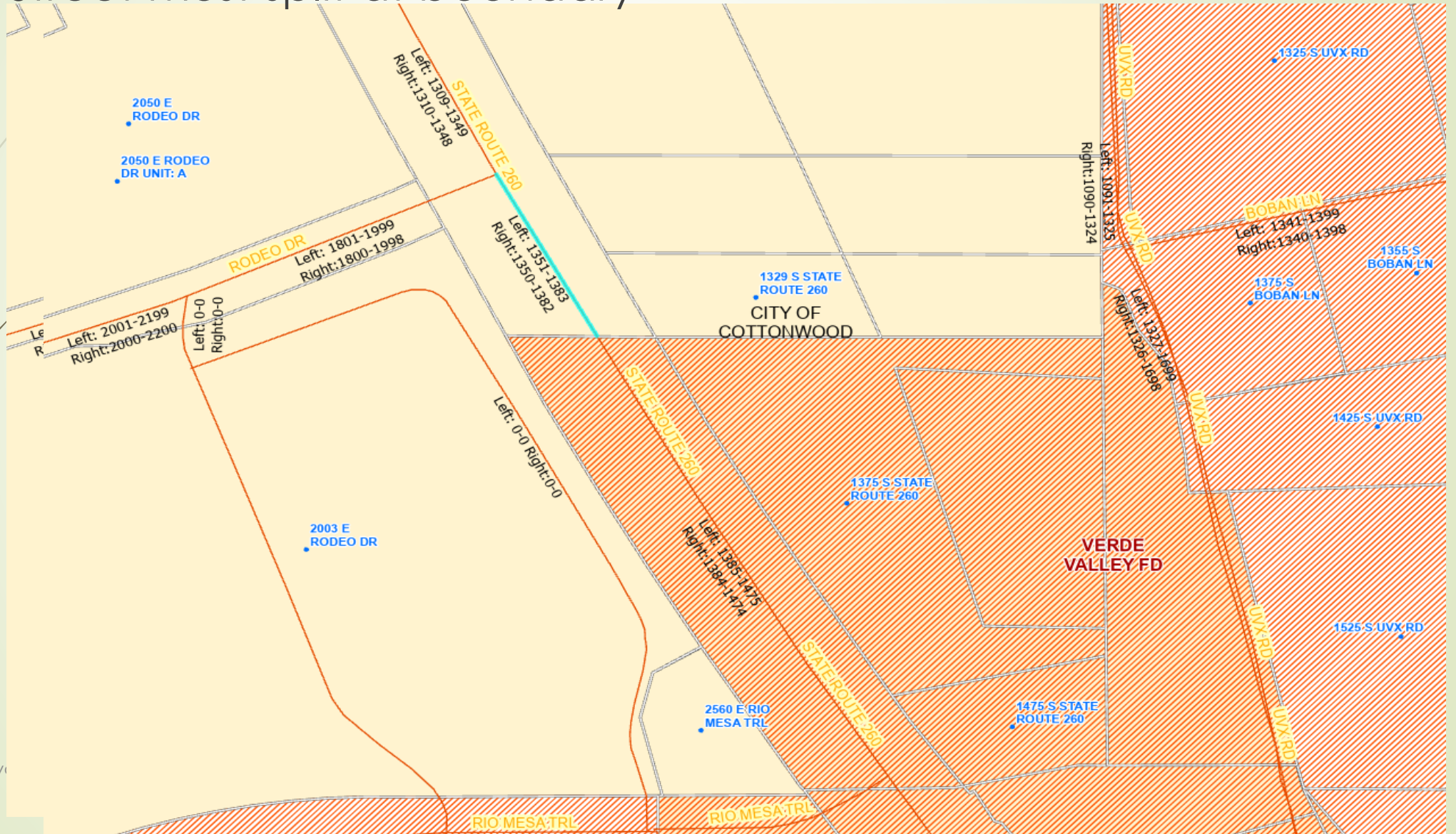
13

- Where to split a road at a boundary



Boundaries Examples

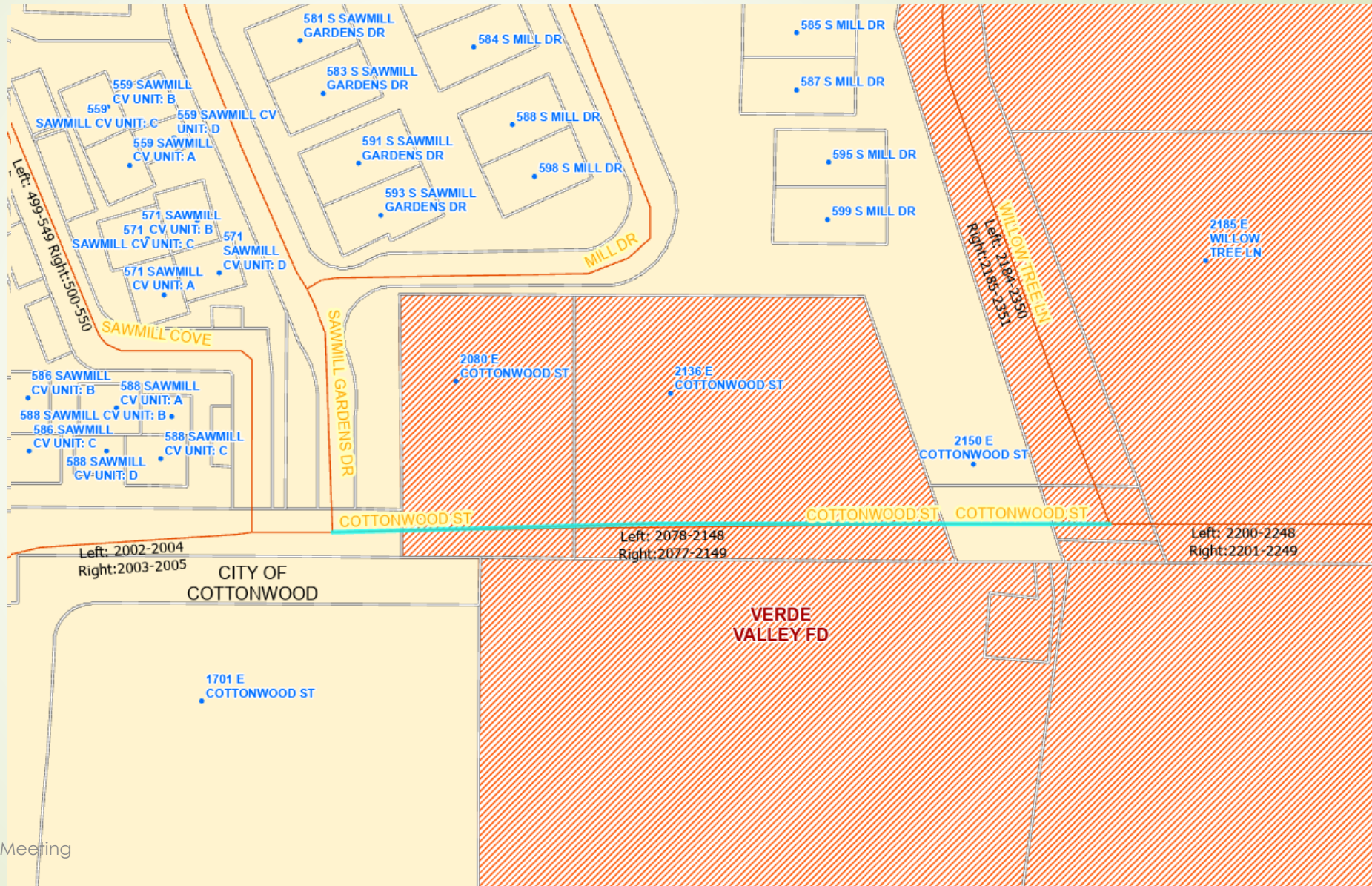
- Street must split at boundary



Boundaries Examples

15

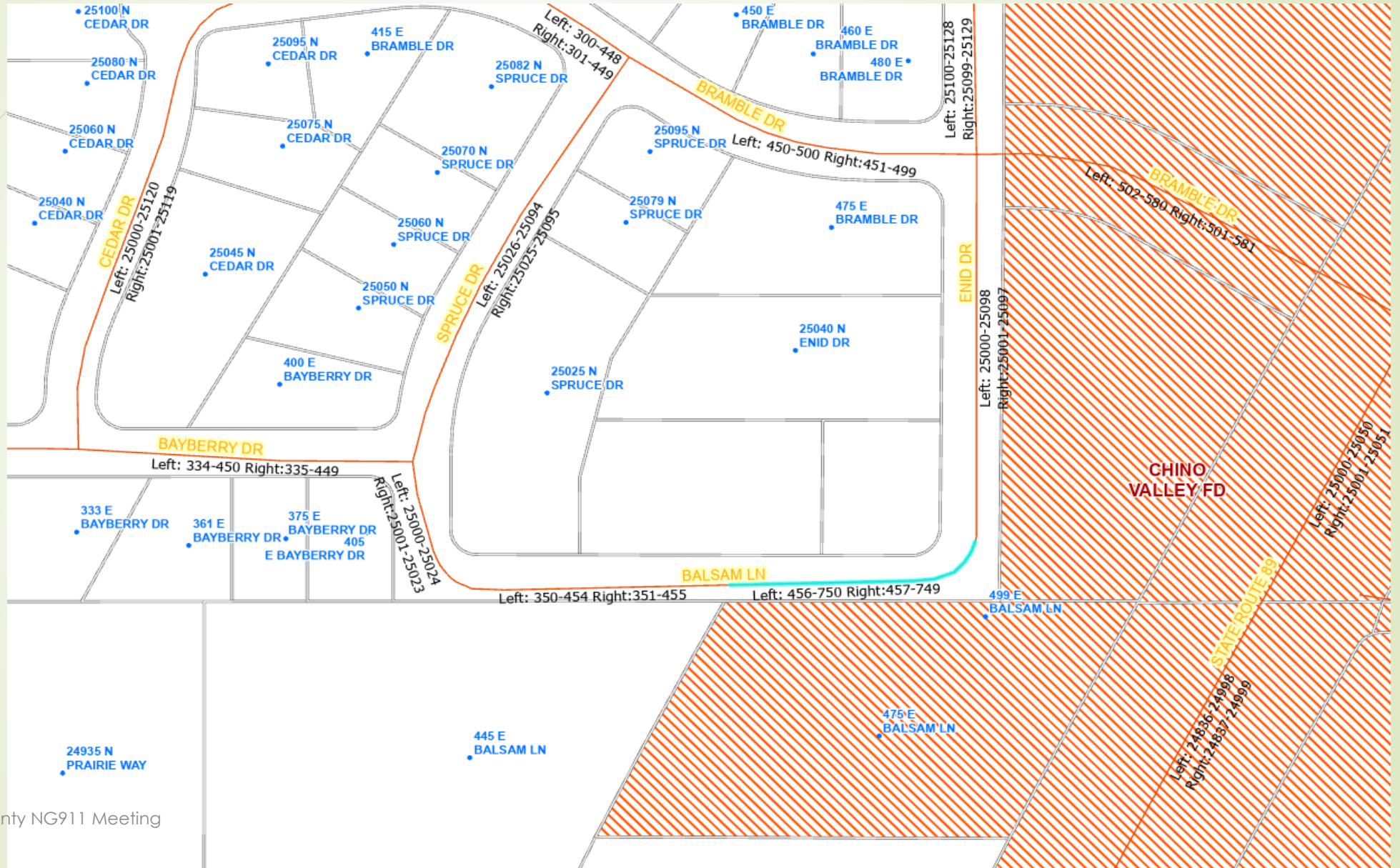
- city boundary issue



Boundaries Examples

16

- Fire District issue

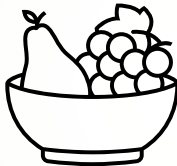


Boundaries Open Discussion

17

- Time to ask questions and have more discussion about what was presented.

BREAK TIME 15 MINUTES



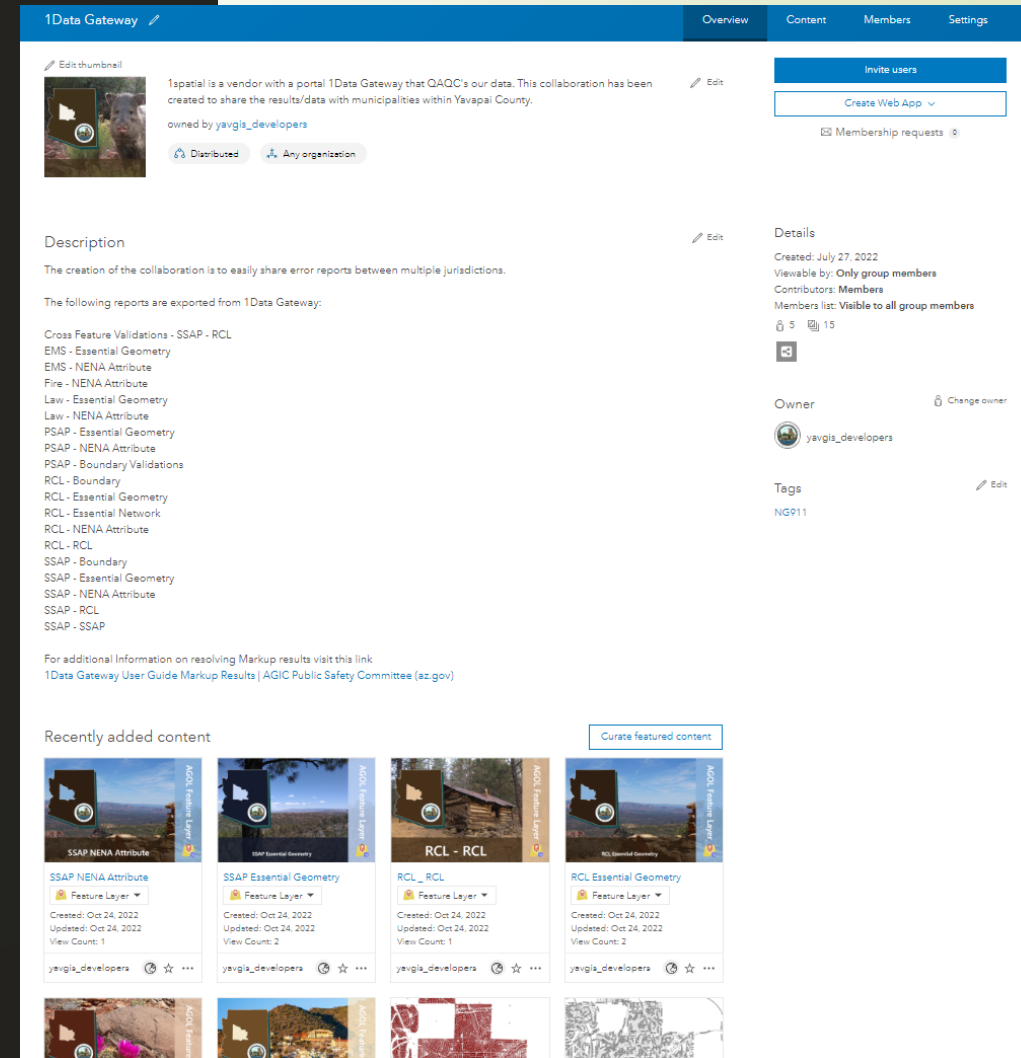
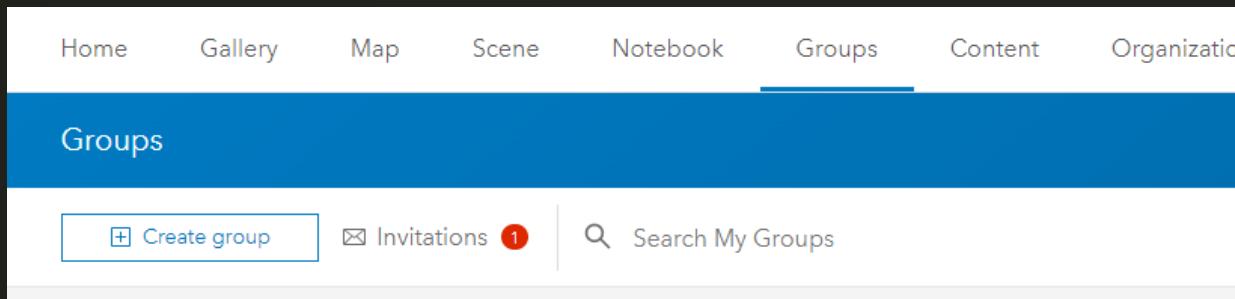
Collaboration

19

❖ What is a collaboration?

❖ Seamlessly share maps, apps, layers, and more with each other using Arc GIS Online (AGOL)

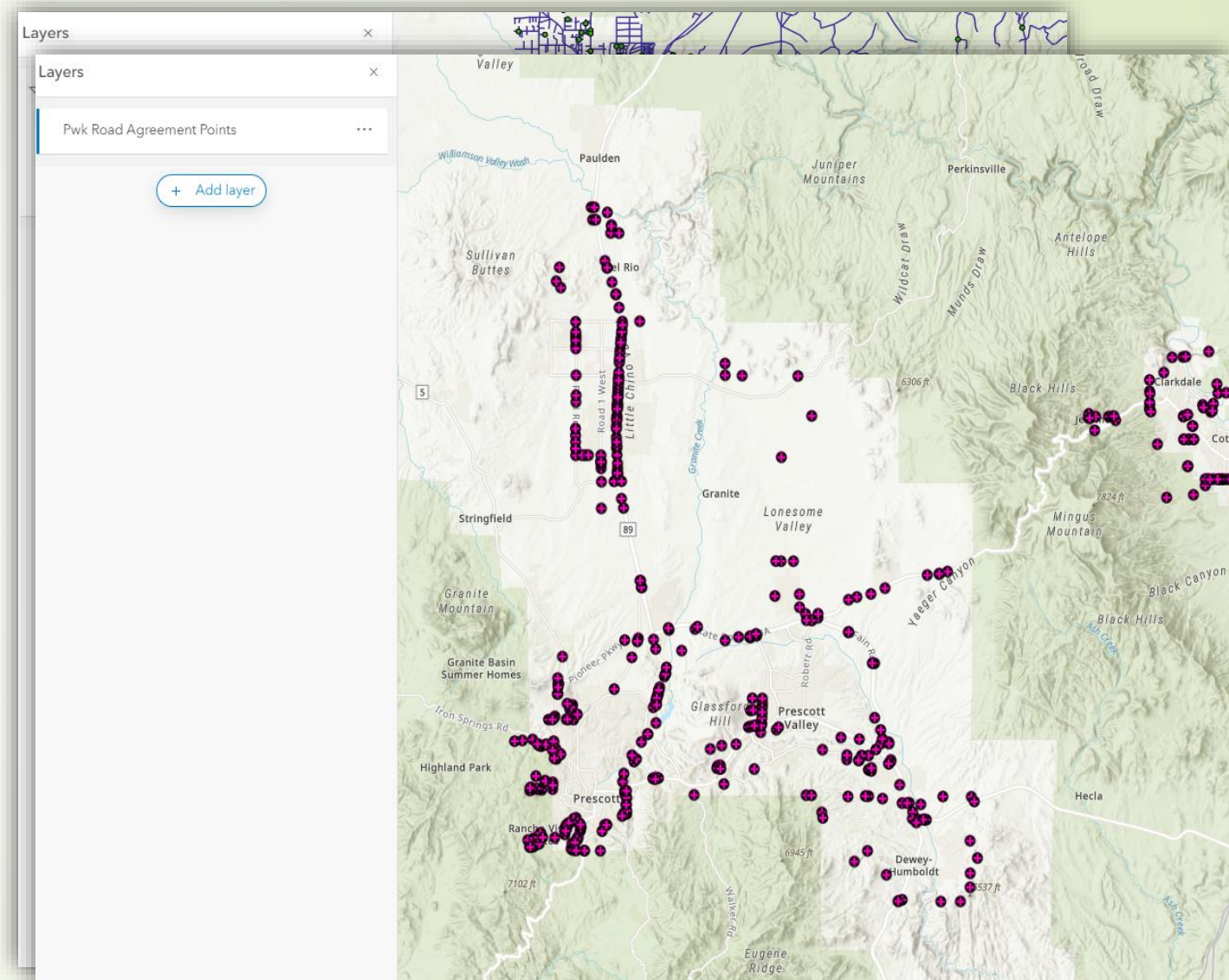
❖ A place to share data for NG911 QAQC



AGOL Collaboration Goals

20

- Share 1 data gateway validation Mark up points
- Edit Demarcation Points (Pwk Road Agreement Points)
- Submit Routine updates to county
- Improve turn around for data updates



1 Spatial - 1 Data Gateway

21

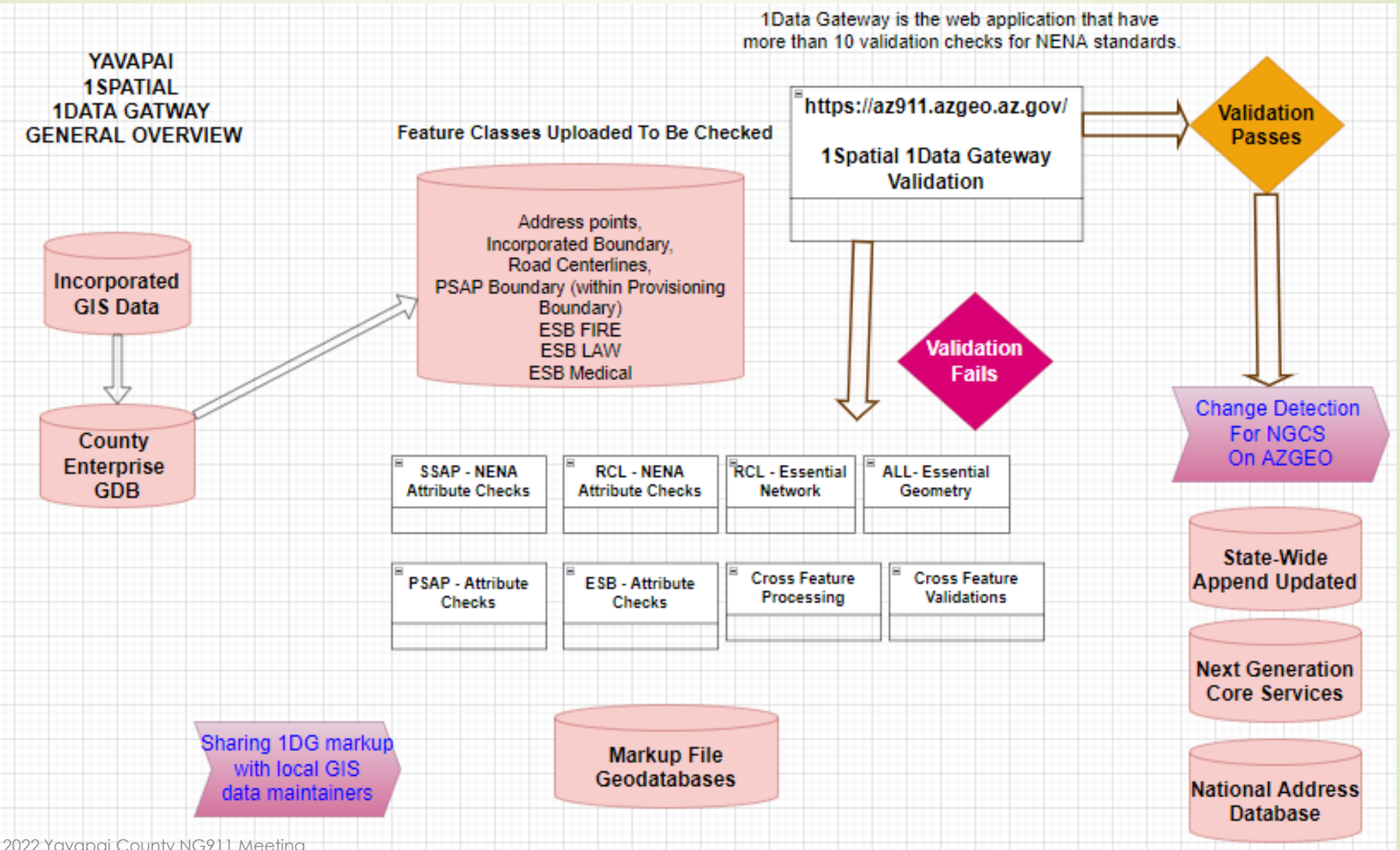
- ❖ A vendor the state has funded to QA/QC data and create markups of errors.

The screenshot displays a GIS application interface. On the left is a 'Drawing Order' panel with a search bar and various tool icons. The map area shows a topographic view of Sanders Mesa with a network of roads and a creek labeled 'Bridle Creek'. A scale of 1:10,502 and coordinates 113.1666677°W 34.5915453°N are visible. Below the map is a table titled 'RCL Network_Markup Point' with the following data:

Class	Comment	Confidence	Feat_ID	OBJECTID	Rel_Ft_ID	Severity	Violation	OBJECTID *
1 Feature	StartPoint spatial equals EndPoint	<Null>	RCLYAV52628@YAVAPAI...	<Null>	<Null>	<Null>	05 - Check for Closed Loops	98

1Spatial 1Data Gateway QAQC

22



Validation Reports

23

Cross Feature Validations - SAP - RCL

EMS - Essential Geometry

EMS - NENA Attribute

Fire - NENA Attribute

Law - Essential Geometry

Law - NENA Attribute

PSAP - Essential Geometry

PSAP - NENA Attribute

PSAP - Boundary Validations

RCL - Boundary

RCL - Essential Geometry

RCL - Essential Network

RCL - NENA Attribute

RCL - RCL

SSAP - Boundary

SSAP - Essential Geometry

SSAP - NENA Attribute

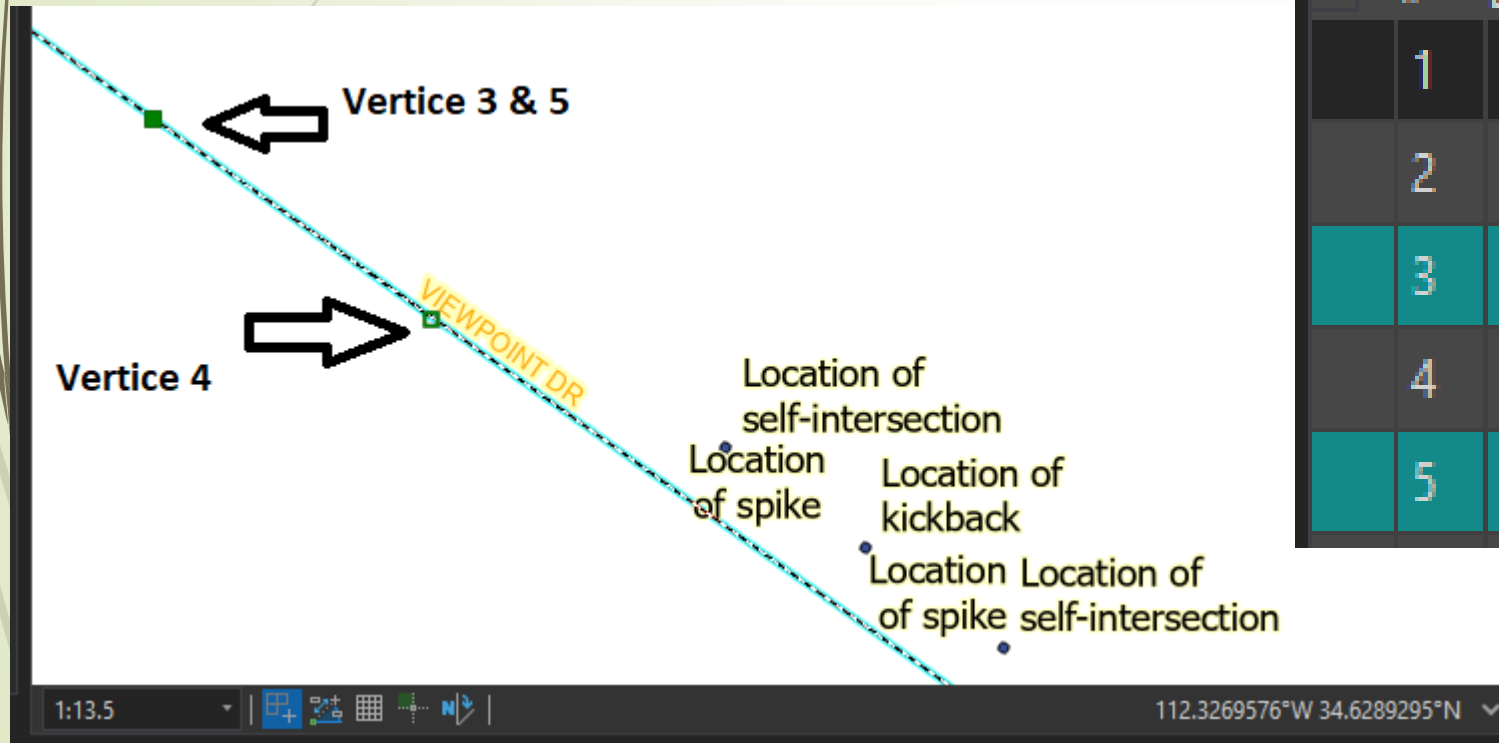
SSAP - RCL

SSAP - SSAP

Data Validation Issues

25

Topology Rules & RCL Essential Geometry Markup

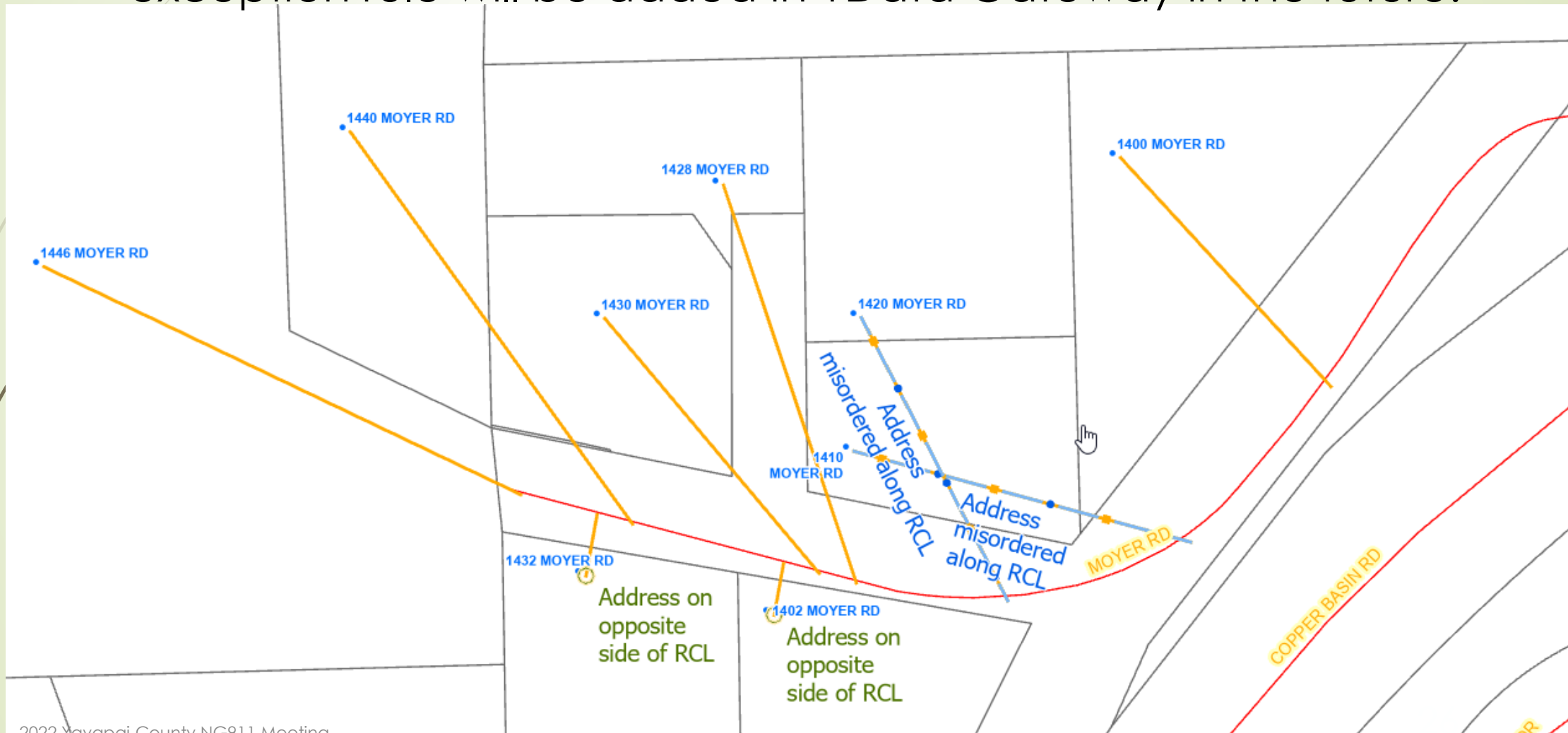


#	Longitude (dd)	Latitude (dd)
1	112.3262997°W	34.6285338°N
2	112.3269343°W	34.6289041°N
3	112.3269895°W	34.6289363°N
4	112.3269841°W	34.6289332°N
5	112.3269895°W	34.6289363°N

Data Validation Issues

26

- Address on opposite side of RCL - Some cannot be changed, exception rule will be added in 1Data Gateway in the future.



Demarcation Points Street Snapping

29

- ❖ Snap to points (also known as “anchor points,” “agreement points,” “stitch points,” “edge match points,” etc.) are points that represent where data from one GIS Data Provider ends and another begins
- ❖ Explain schema

Demarcation Points Street Snapping

30

❖ Examples

Demarcation Points Street Snapping

31

- ❖ ADOT demarcation data

Collaboration Feedback

- Sending Updated VIA AGOL?
- Getting Emails when markup points or update?
- Further Organization?
- Have you used the Hosted Feature classes for QAQC -ing data?



Wrap-up

33

- Updated County address editor application coming soon.
- Statewide workflow future meeting
 - What is working?
 - What is not working?
 - Plans at the State Level that may affect you.

Wrap-up - Next meeting

34

- ❖ Things to remember:
 - Yavapai County PSAP Cutover to Next Generation Core Services August 2023.
- ❖ Next meeting potential topics February?:
 - Result sharing from jurisdictions (improve workflow in both directions)
 - Parsing Road Names for NG911
 - 1Spatial 1Data Gateway – Implement Topology (PRIORITY)

Arizona NG9-1-1 Imp

AZ Next Gen Core

PSAP: Prescott Regional
Comm Center
Estimated Cutover Date:
9/25/2023
478 Days Till NG Cutover

PSAP: Yavapai County
Sheriffs Office
Estimated Cutover Date:
9/26/2023
479 Days Till NG Cutover

PSAP: Camp Verde Marshalls
Office
Estimated Cutover Date:
9/27/2023
480 Days Till NG Cutover

PSAP: Cottonwood Police
Department
Estimated Cutover Date:
9/28/2023
481 Days Till NG Cutover

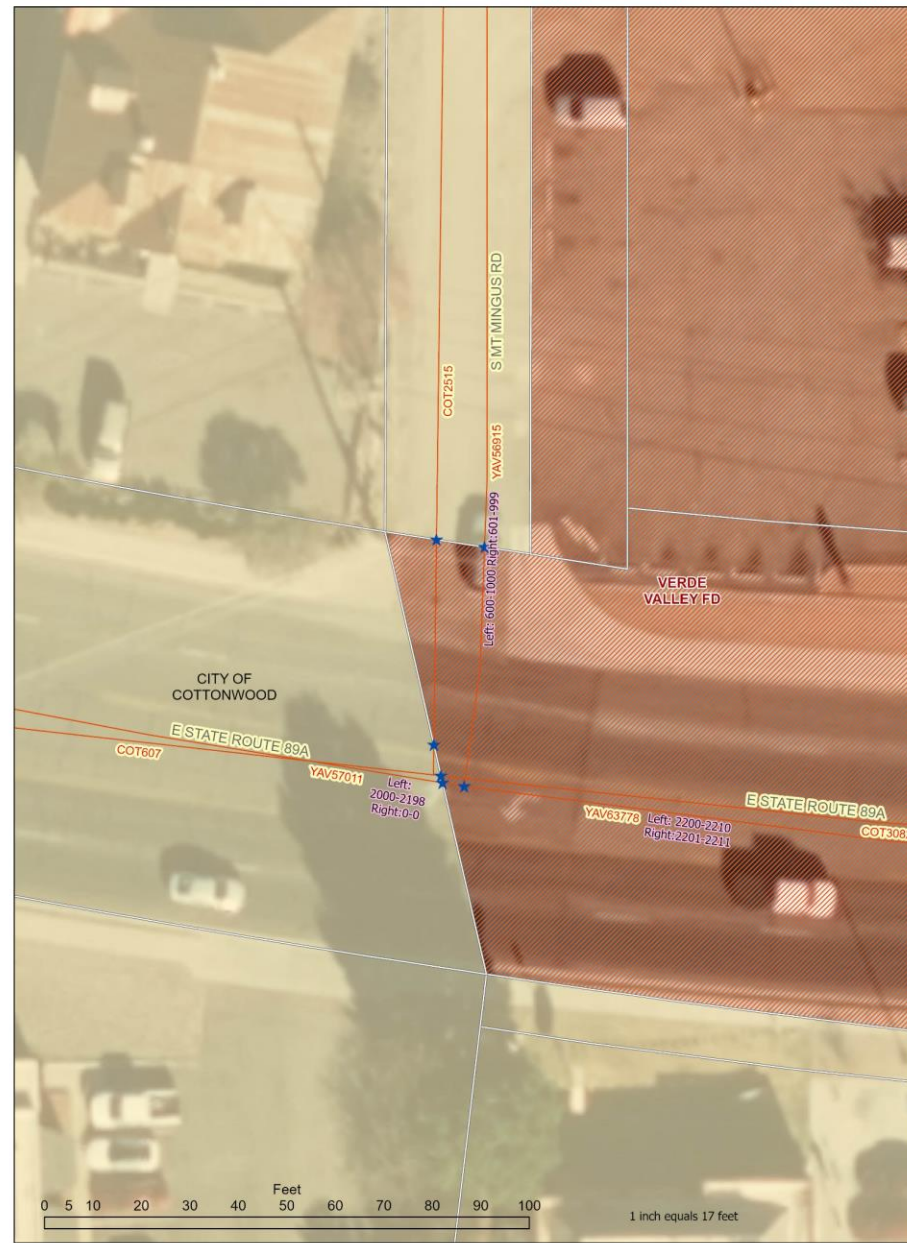
PSAP: Sedona Police
Department
Estimated Cutover Date:
9/29/2023
482 Days Till NG Cutover

List

Map

Exercise - What is wrong with this?

- ➔ Sorry Gregory for picking on you.



Legend

- ★ Pwk Road Agreement Points
- Pwk Street Centerlines
- Fire Districts**
- ▨ Verde Valley FD

- City Boundaries Filled
- CITY OF COTTONWOOD

- Vexcel 2021 Imagery
-
-
-

NOTE: EACH STREET SEGMENT IS IDENTIFIED BY AN **EXTERNAL STREET KEY LABEL**

Date Saved: 10/26/2022 10:48 AM

